

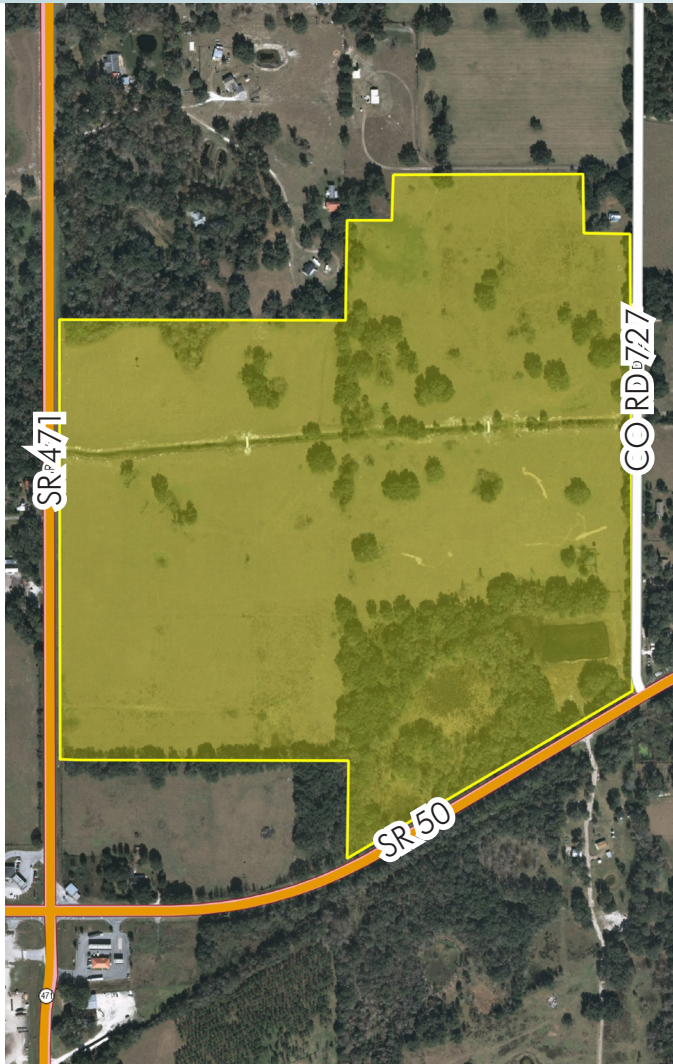
SUMTER COUNTY LAND

138± acres

Sumter County, FL

**MAJOR PRICE
REDUCTION**

LAND FOR SALE



LOCATION

The property is located on the NE corner of SR 50 and SR 471.

SIZE

138± acres

PRICE

NOW \$683,000 or \$4,950/acre

50% Reduction in Price

WAS \$1,380,000 or \$10,000/acre

ZONING

Agricultural.

ROAD FRONTAGE

1,500'± on State Road 50

2,000'± on State Road 471

2,000'± on County Road 727

Offering subject to errors, omission, prior sale or withdrawal without notice.

— Commercial Real Estate Investments | Management | Brokerage | Development | Land —

Maury L. Carter & Associates, Inc.

407-422-3144 | www.maurycarter.com

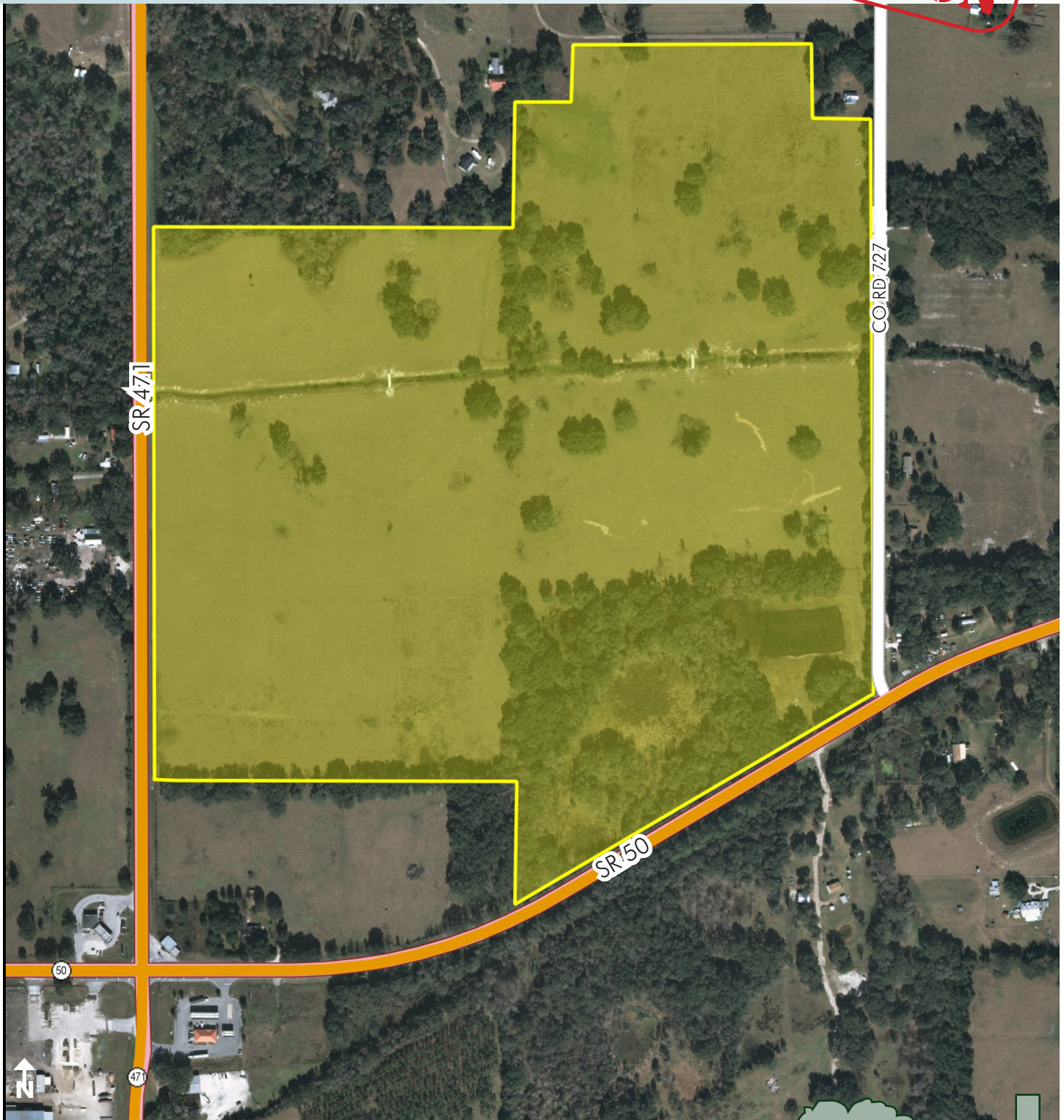


SUMTER COUNTY LAND

138± acres

Sumter County, FL

**MAJOR PRICE
REDUCTION**



PROPERTY MAP

— Commercial Real Estate Investments | Management | Brokerage | Development | Land —

Maury L. Carter & Associates, Inc.
407-422-3144 | www.maurycarter.com



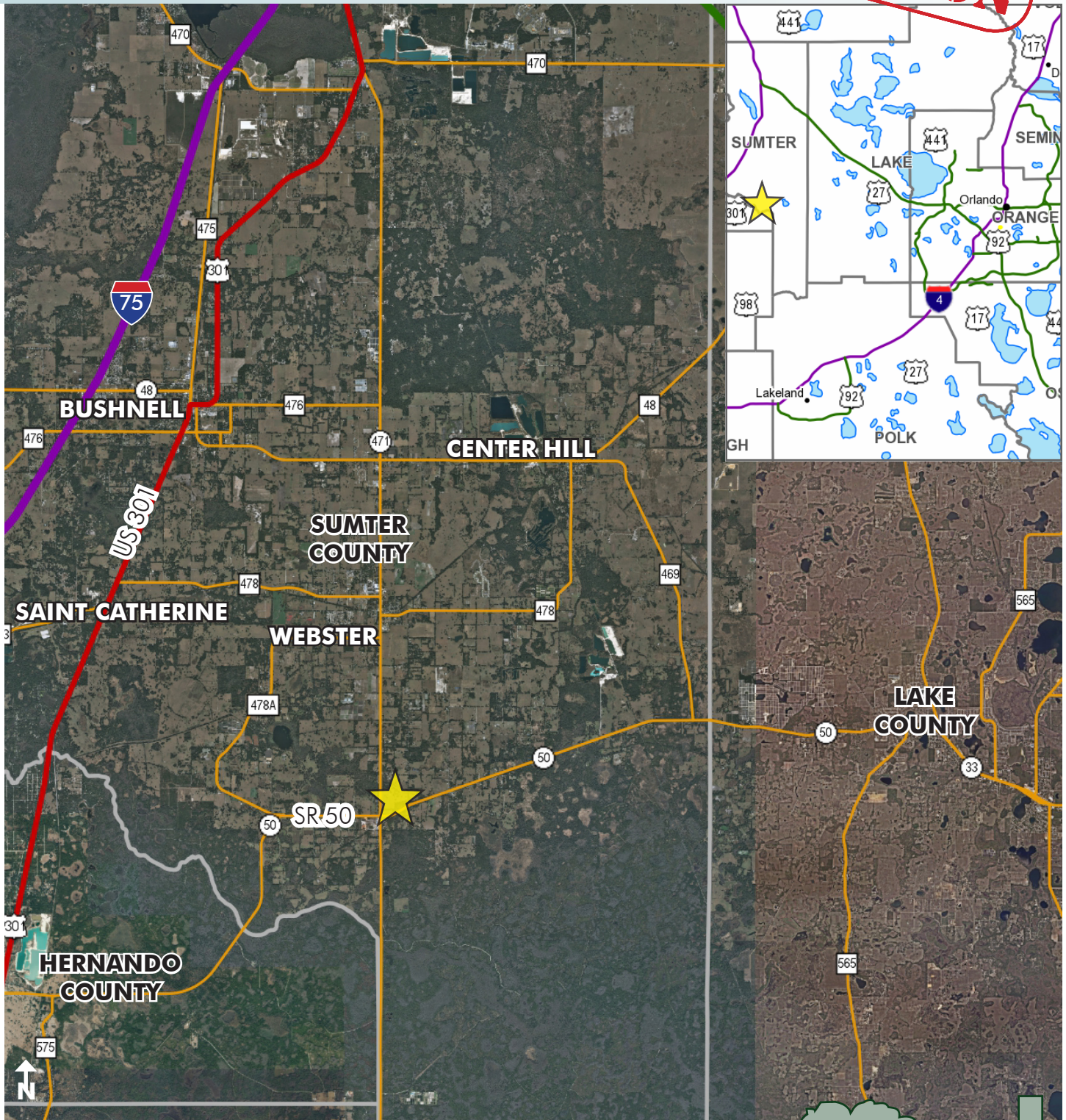
Maury L. Carter & Associates, Inc.SM
Licensed Real Estate Broker

SUMTER COUNTY LAND

138± acres

Sumter County, FL

**MAJOR PRICE
REDUCTION**



LOCATION MAP

— Commercial Real Estate Investments | Management | Brokerage | Development | Land

Maury L. Carter & Associates, Inc.

407-422-3144 | www.maurycarter.com

