

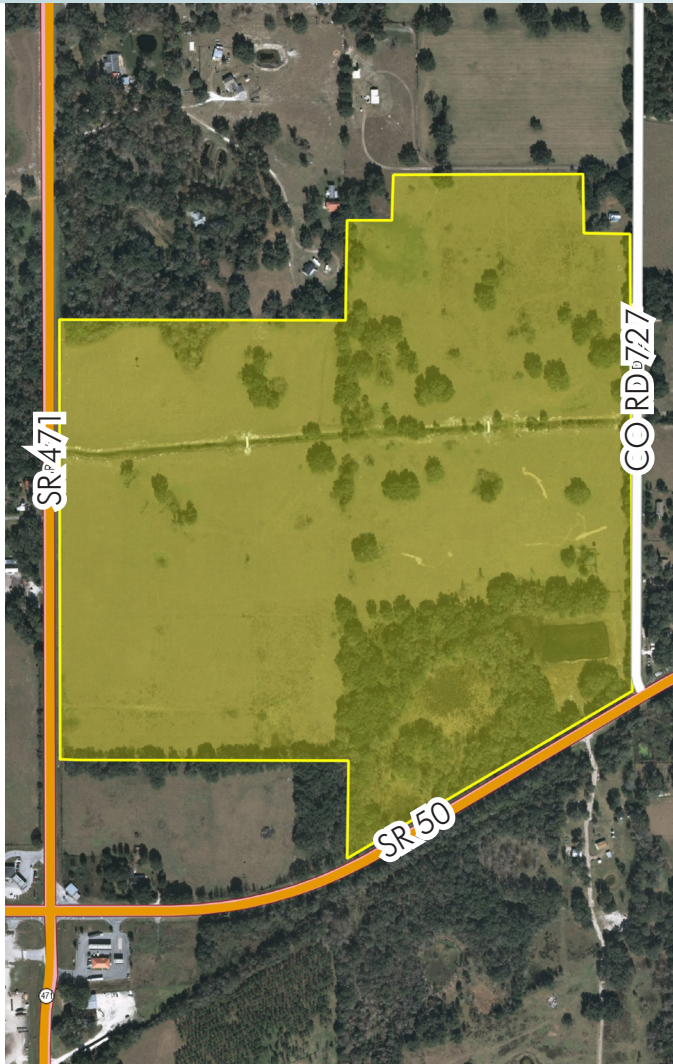
SUMTER COUNTY LAND

138± acres

Sumter County, FL

**MAJOR PRICE
REDUCTION**

LAND FOR SALE



LOCATION/DESCRIPTION

The property is located on the NE corner of SR 50 and SR 471. Ideal for recreation, country living, equestrian estate, timber, hunting, cattle ranching, potential other agricultural uses, potential development site, etc.

SIZE

138± acres

PRICE

NOW \$683,000 or \$4,950/acre

50% Reduction in Price

WAS \$1,380,000 or \$10,000/acre

ZONING

Agricultural.

ROAD FRONTAGE

1,500'± on State Road 50

2,000'± on State Road 471

2,000'± on County Road 727

Offering subject to errors, omission, prior sale or withdrawal without notice.

— Commercial Real Estate Investments | Management | Brokerage | Development | Land —

Maury L. Carter & Associates, Inc.

407-422-3144 | www.maurycarter.com

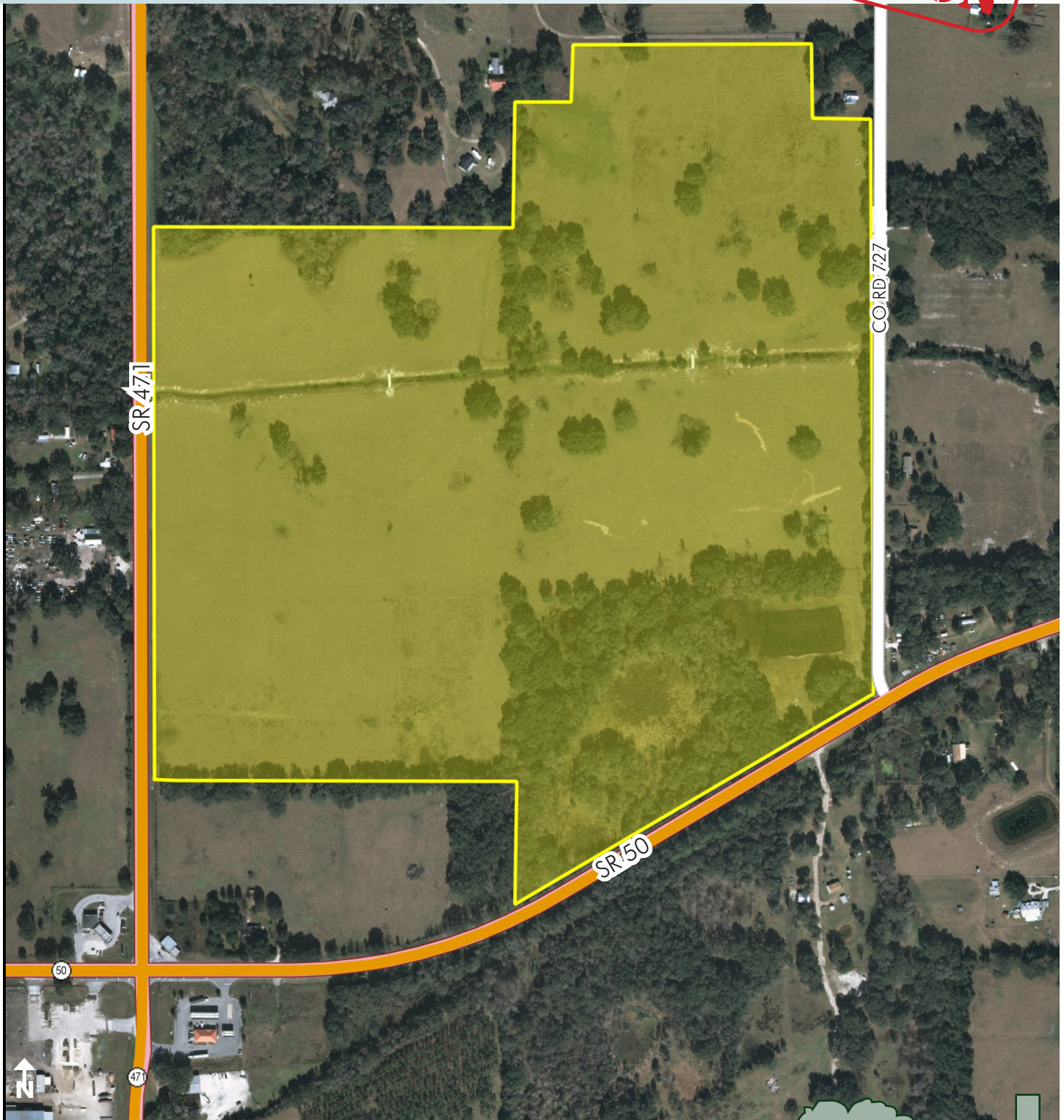


SUMTER COUNTY LAND

138± acres

Sumter County, FL

**MAJOR PRICE
REDUCTION**



PROPERTY MAP

— Commercial Real Estate Investments | Management | Brokerage | Development | Land —

Maury L. Carter & Associates, Inc.
407-422-3144 | www.maurycarter.com

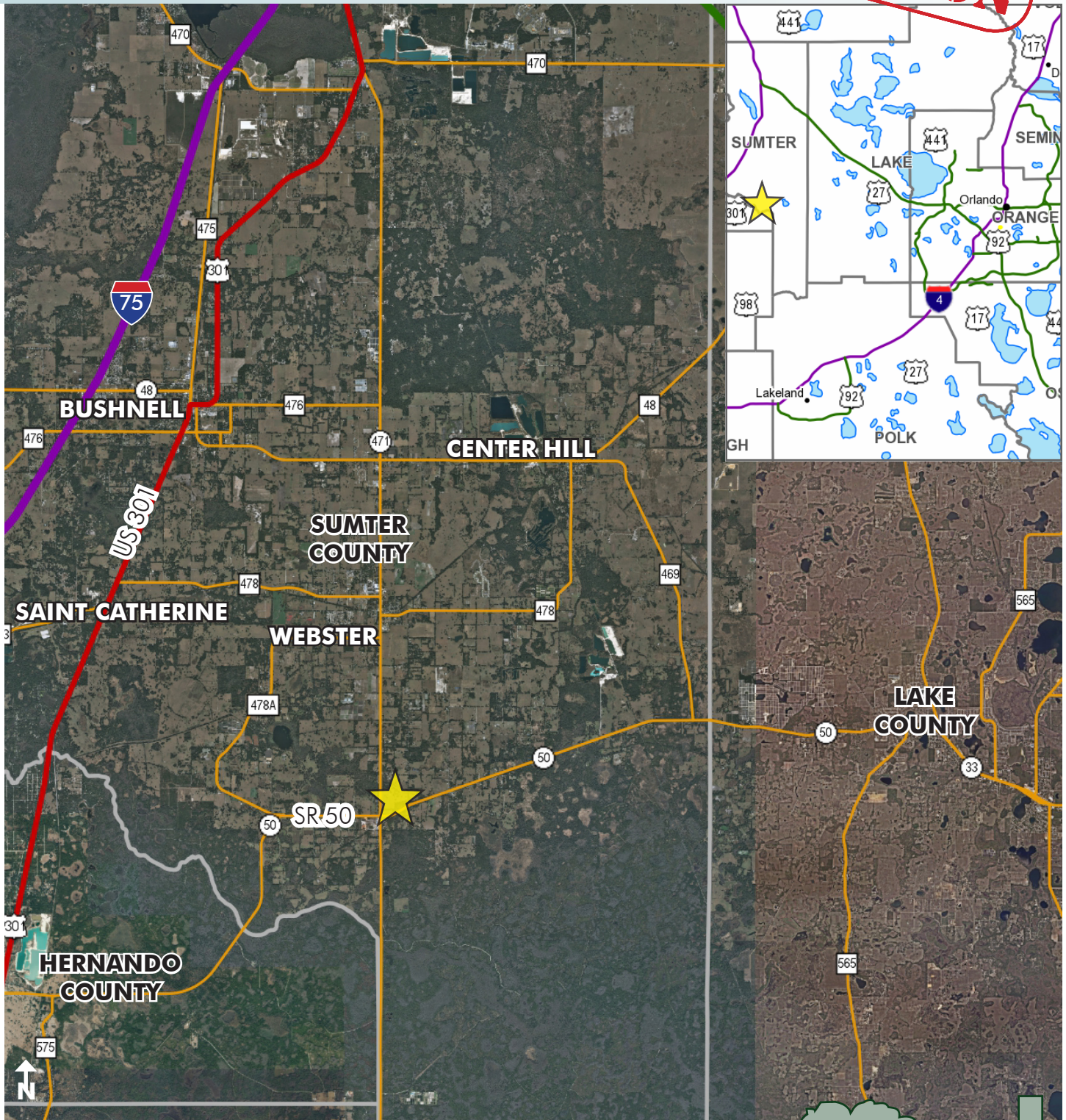


SUMTER COUNTY LAND

138± acres

Sumter County, FL

**MAJOR PRICE
REDUCTION**



LOCATION MAP

— Commercial Real Estate Investments | Management | Brokerage | Development | Land

Maury L. Carter & Associates, Inc.
407-422-3144 | www.maurycarter.com

