

# PALM COAST PARK

Phase 1A: Lots 1-4 & 14-15

64± acres (gross) in Flagler County, FL



## LOCATION

Located on the west side of US 1 at the intersection of US 1 and Matanzas Woods Pkwy approx. 2 miles west of the new I-95 interchange at Matanzas Woods Pkwy.

## SIZE/PRICE OPTIONS

Lots 1-4 & Lots 14-15: 64± gross acres= \$4,660,000

## ZONING

COM-2. Approved for 235,000 sf Retail/Office.

## DESCRIPTION

Development opportunity within 5 minutes of I-95! Perfectly situated just over 5 miles from the golden beaches of Palm Coast and its ever-expanding offering of river and ocean view restaurants, this is the last treasure along the Flagler and Volusia Coast. A dozen golf courses are within 15 minutes of the project and for the boater, there are numerous marinas and the Intracoastal Waterway just under 5 miles away.

Led by the oceanfront resorts of Hammock Dunes and golf communities such as Grand Haven, Palm Coast enjoyed explosive growth throughout the 1990s and early 2000s and now exceeds 100,000 in population. Even during the great recession, Palm Coast added several national retail stores, a major movie theatre and saw the expansion of Florida Hospital. With the economic recovery in bloom, the region is now poised to retake its position as one of Florida's fastest growing Metropolitan Statistical Areas.

Offering subject to errors, omission, prior sale or withdrawal without notice.

LAND FOR SALE



Maury L. Carter & Associates, Inc.  
407-422-3144 | [www.maurycarter.com](http://www.maurycarter.com)

CO-LISTED WITH

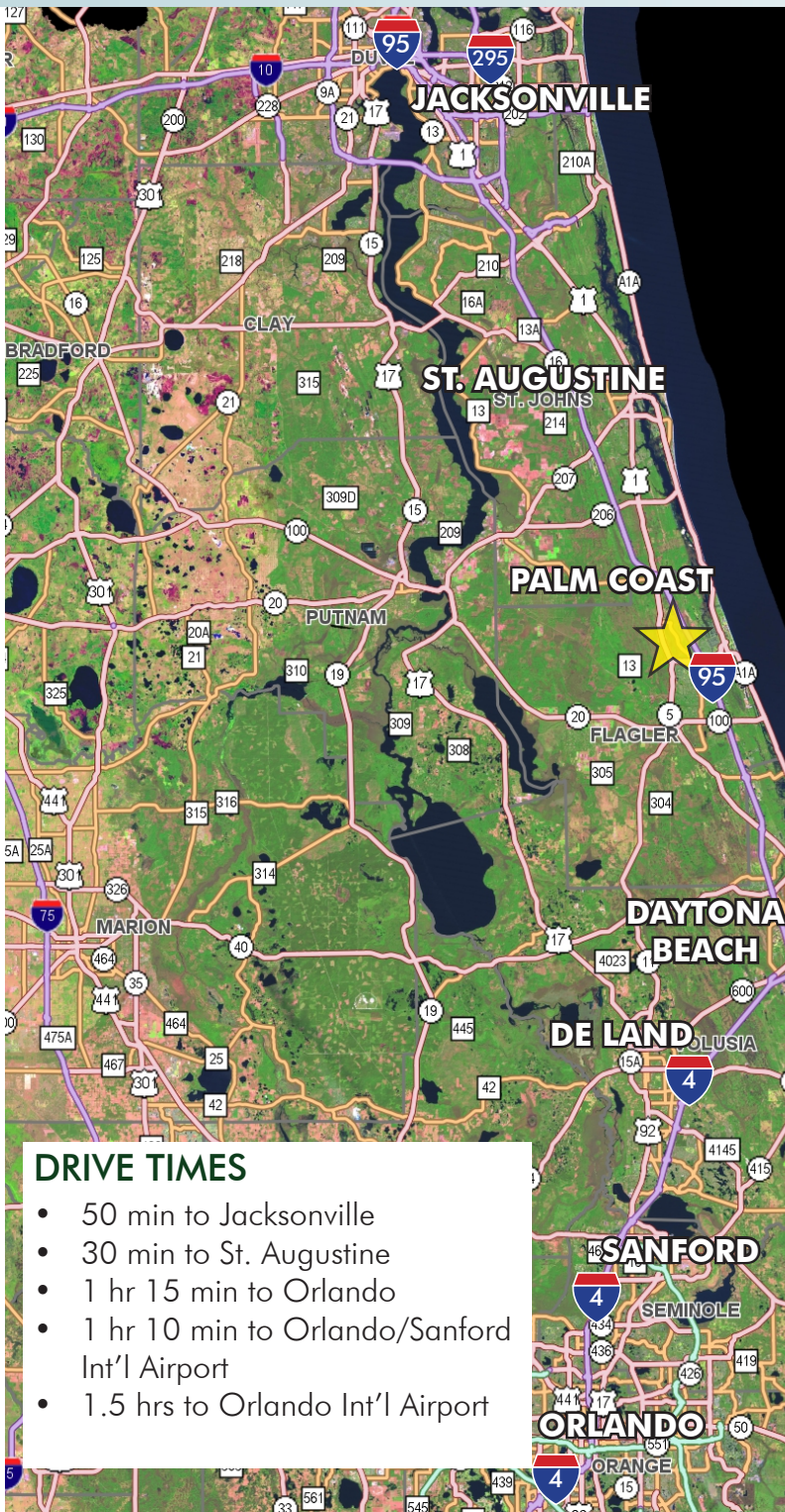


386-446-6226  
[www.palmcoast.com](http://www.palmcoast.com)

# PALM COAST PARK

Phase 1A: Lots 1-4 & 14-15

64± acres (gross) in Flagler County, FL



## DRIVE TIMES

- 50 min to Jacksonville
- 30 min to St. Augustine
- 1 hr 15 min to Orlando
- 1 hr 10 min to Orlando/Sanford Int'l Airport
- 1.5 hrs to Orlando Int'l Airport

## LOCATION MAP

## PALM COAST PARK

The site is part of Palm Coast Park, a 4,700 acre mixed-use development project which will include single-family, multi-family residential neighborhoods and projects, a K-8 public school, and commercial developments including a national retailer anchored power center. The project will be an urban centered community with natural elements including multiple parks and a multi-purpose trail.



Maury L. Carter & Associates, Inc.  
407-422-3144 | [www.maurycarter.com](http://www.maurycarter.com)

CO-LISTING



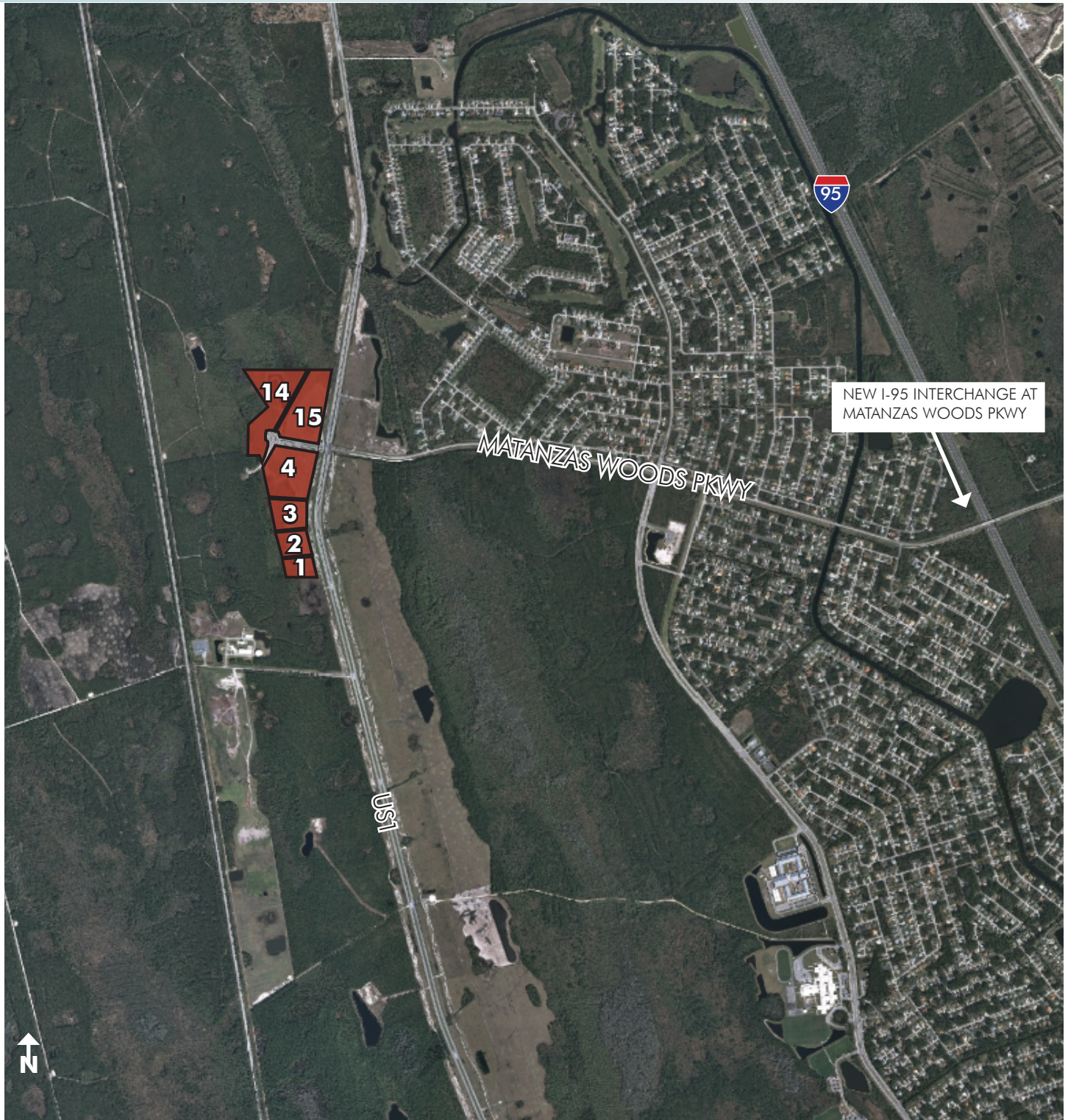
386-446-6226  
[www.palmcoast.com](http://www.palmcoast.com)



# PALM COAST PARK

Phase 1A: Lots 1-4 & 14-15

64± acres (gross) in Flagler County, FL



PARCEL MAP



CO-LISTING

Maury L. Carter & Associates, Inc.  
407-422-3144 | [www.maurycarter.com](http://www.maurycarter.com)



386-446-6226  
[www.palmcoast.com](http://www.palmcoast.com)

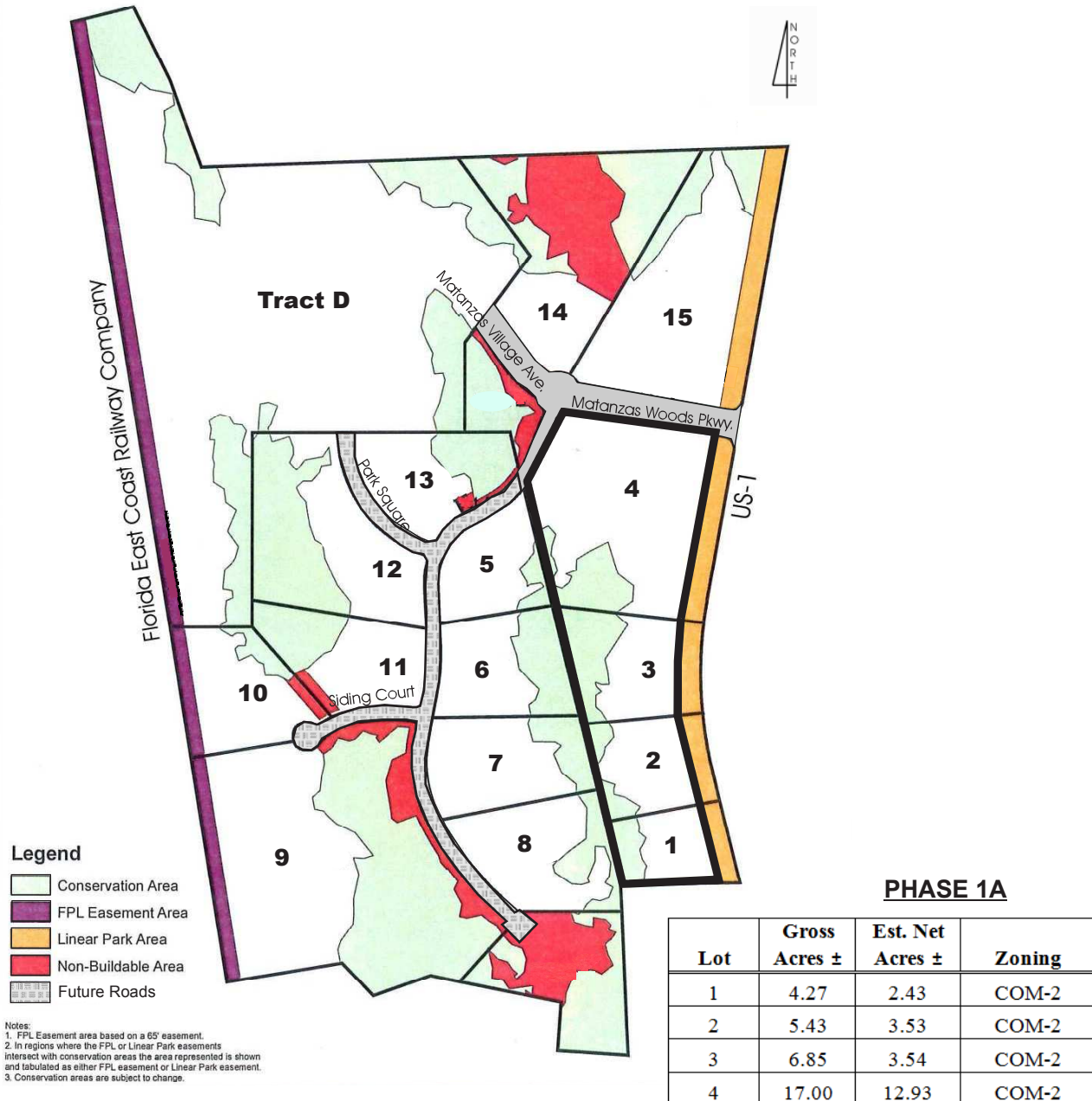


# PALM COAST PARK

Phase 1A: Lots 1-4 & 14-15

64± acres (gross) in Flagler County, FL

## PALM COAST PARK - PHASE 1A



Maury L. Carter & Associates, Inc.  
407-422-3144 | [www.maurycarter.com](http://www.maurycarter.com)

CO-LISTING



386-446-6226  
[www.palmcoast.com](http://www.palmcoast.com)