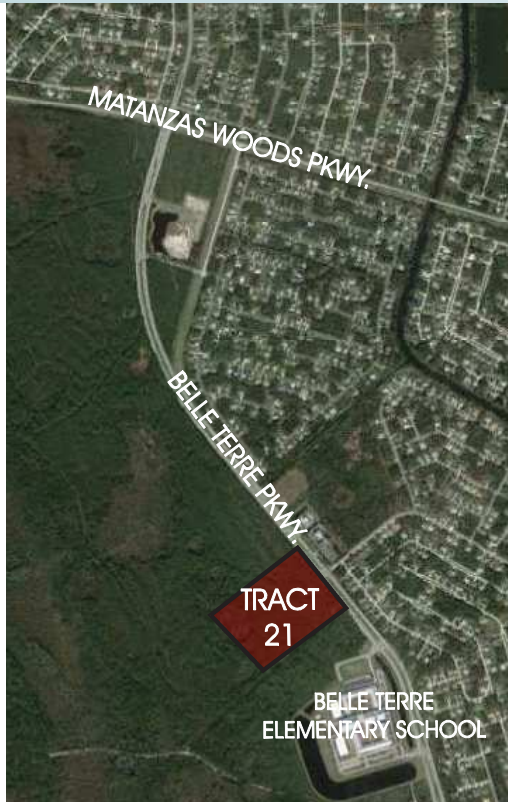


PALM COAST PARK

Tract 21

16.3± acres (net) in Flagler County, FL



LOCATION

Located on Belle Terre Pkwy, 1 mile east of US 1 and under 4 min from the new I-95 interchange at Matanzas Woods Pkwy.

SIZE

16.3± acres (net)

PRICE

\$1,000,000

ZONING

Approved for 50,000 sf Industrial/Office

DESCRIPTION

Development opportunity within 5 minutes of I-95! Perfectly situated just over 5 miles from the golden beaches of Palm Coast and its ever-expanding offering of river and ocean view restaurants, this is the last treasure along the Flagler and Volusia Coast. A dozen golf courses are within 15 minutes of the project and for the boater, there are numerous marinas and the Intracoastal Waterway just under 5 miles away.

Led by the oceanfront resorts of Hammock Dunes and golf communities such as Grand Haven, Palm Coast enjoyed explosive growth throughout the 1990s and early 2000s and now exceeds 100,000 in population. Even during the great recession, Palm Coast added several national retail stores, a major movie theatre and saw the expansion of Florida Hospital. With the economic recovery in bloom, the region is now poised to retake its position as one of Florida's fastest growing Metropolitan Statistical Areas.

Offering subject to errors, omission, prior sale or withdrawal without notice.

LAND FOR SALE



CO-LISTED WITH

Maury L. Carter & Associates, Inc.
407-422-3144 | www.maurycarter.com

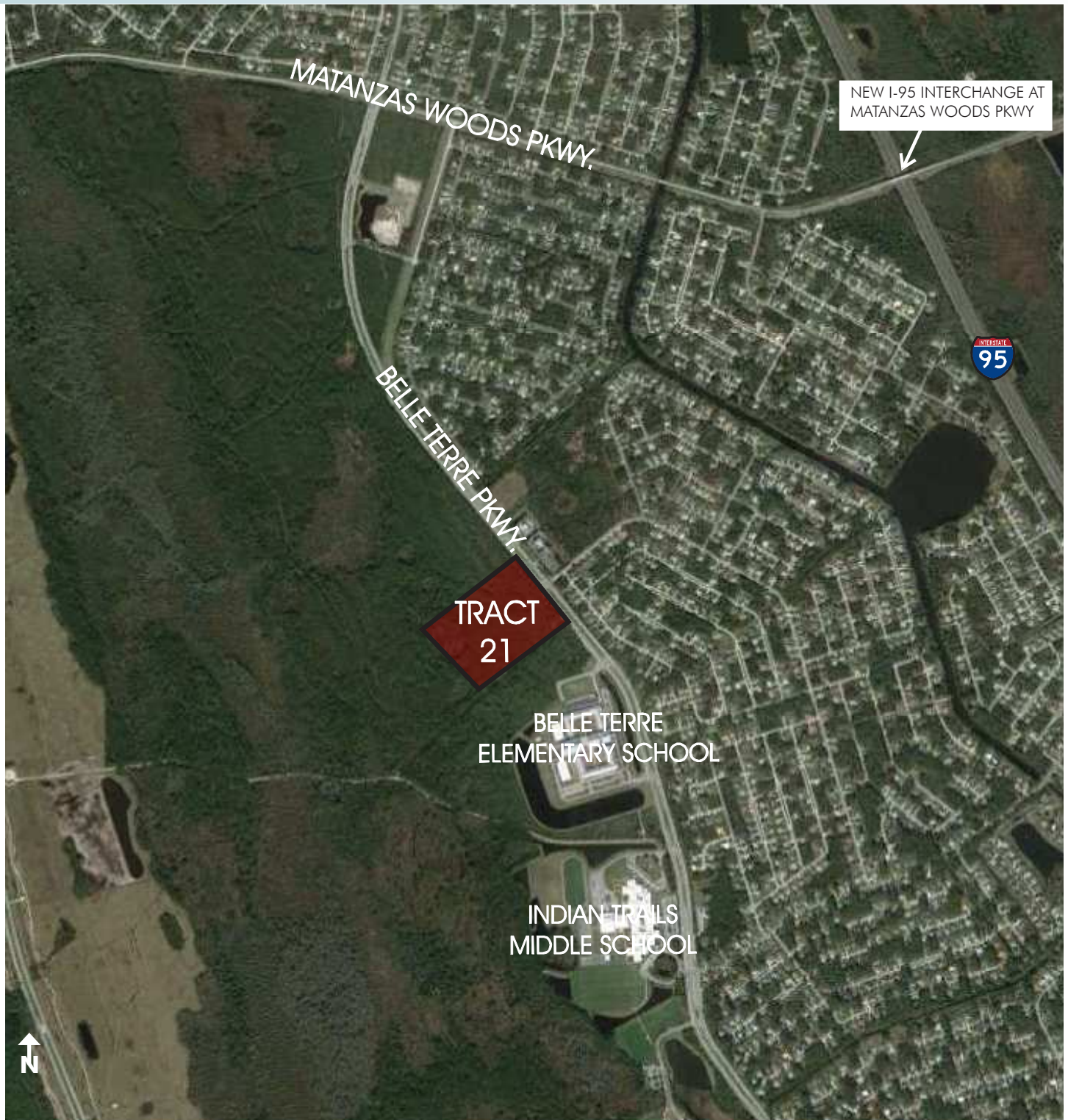


386-446-6226
www.palmcoast.com

PALM COAST PARK

Tract 21

16.3± acres (net) in Flagler County, FL



PARCEL MAP



Maury L. Carter & Associates, Inc.
407-422-3144 | www.maurycarter.com

CO-LISTING

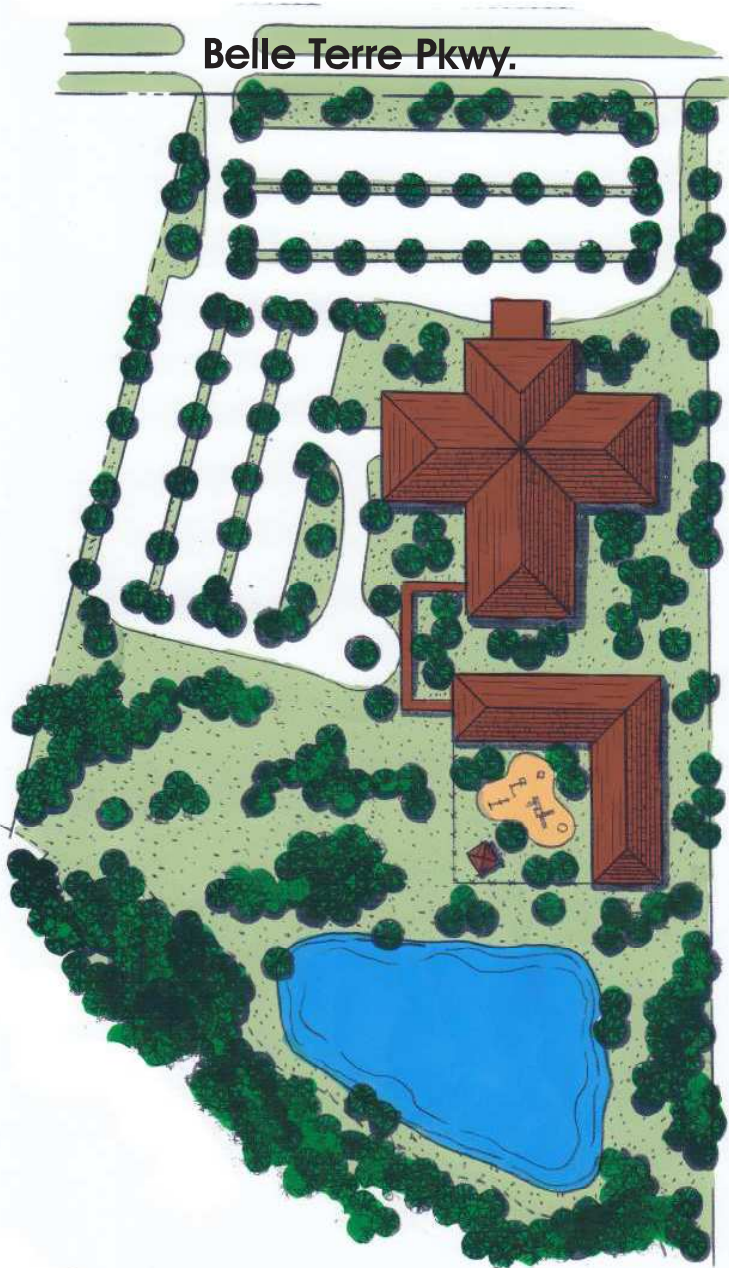


386-446-6226
www.palmcoast.com

PALM COAST PARK

Tract 21

16.3± acres (net) in Flagler County, FL



PALM COAST PARK TRACT 21

Location: Belle Terre Pkwy.
Size: 16.30± Net Acres

Conceptual Plan

100,000 SQ.. FT. CHURCH & SCHOOL USES
390 PARKING SPACES
COMMERCIAL, OFFICE, INSTITUTIONAL



Maury L. Carter & Associates, Inc.
407-422-3144 | www.maurycarter.com

CO-LISTING



386-446-6226
www.palmcoast.com