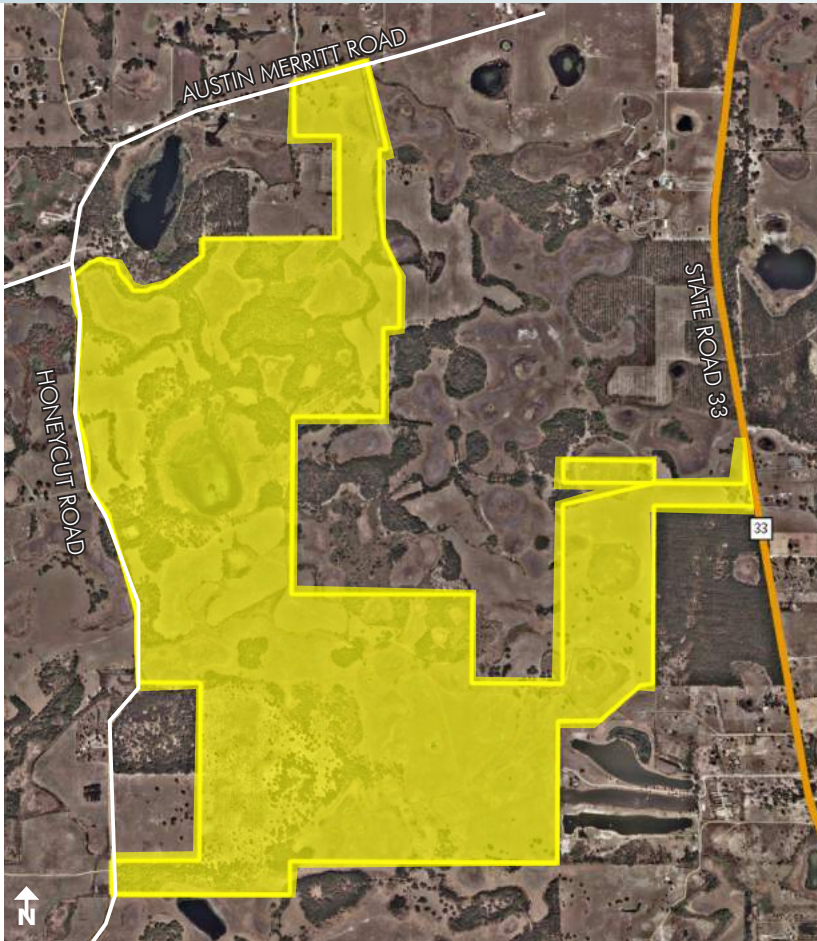


RESIDENTIAL DEVELOPMENT LAND

1082± acres
Lake County, FL

**MAJOR PRICE
REDUCTION**



LAND FOR SALE

LOCATION

Located west of State Road 33, south of Austin Merritt Road, and east of Honeycut Road in northwest Lake County, FL.

SIZE

1082± acres

PRICE

NOW: \$5,954,000 (\$5,503/acre) WAS: \$12,984,000 (\$12,000/acre)

54% Reduction in Price

ZONING/FUTURE LAND USE

This property has been annexed into the City of Mascotte and its Future Land Use designation on the new comprehensive plan is Rural Residential. This Future Land Use allows for 1 unit/acre and would yield 900-1,000 units for the property. A rezoning would be required and should allow for clustering of the residential units.

Offering subject to errors, omission, prior sale or withdrawal without notice.

— Commercial Real Estate Investments | Management | Brokerage | Development | Land

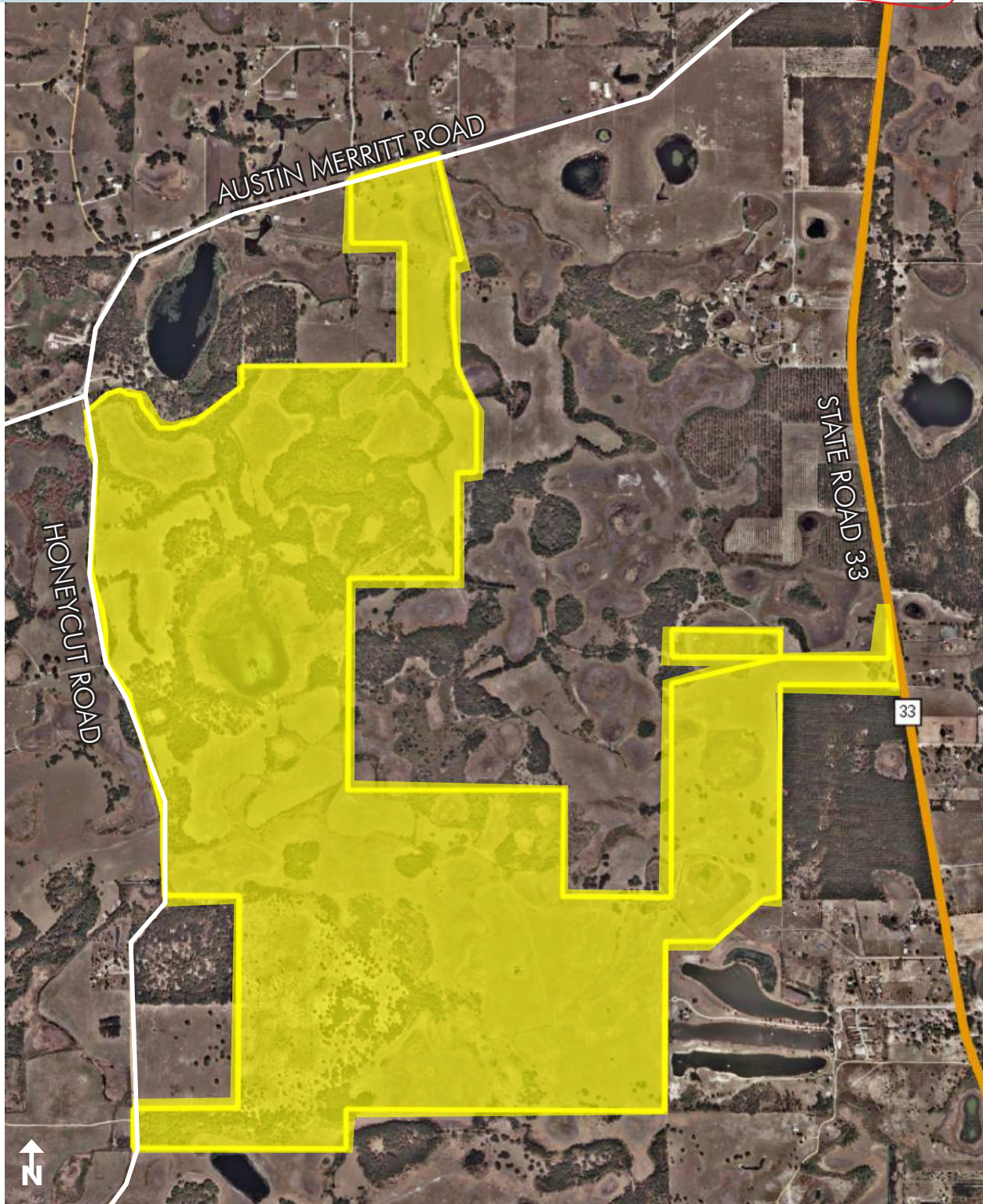
Maury L. Carter & Associates, Inc.
407-422-3144 | www.maurycarter.com



RESIDENTIAL DEVELOPMENT LAND

1082± acres
Lake County, FL

**MAJOR PRICE
REDUCTION**



PROPERTY MAP

— Commercial Real Estate Investments | Management | Brokerage | Development | Land

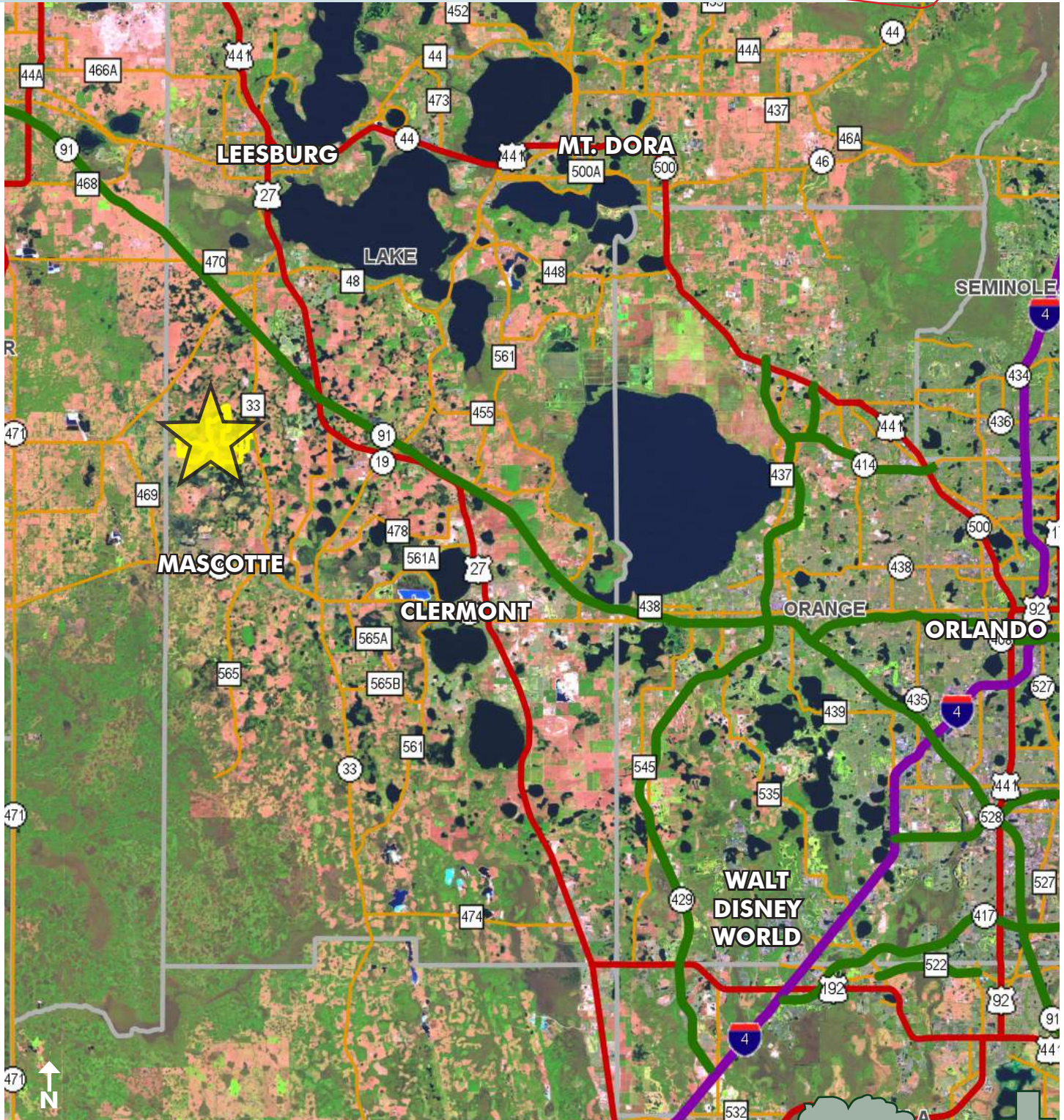
Maury L. Carter & Associates, Inc.
407-422-3144 | www.maurycarter.com



RESIDENTIAL DEVELOPMENT LAND

1082± acres
Lake County, FL

**MAJOR PRICE
REDUCTION**



LOCATION MAP

— Commercial Real Estate Investments | Management | Brokerage | Development | Land

Maury L. Carter & Associates, Inc.
407-422-3144 | www.maurycarter.com



RESIDENTIAL DEVELOPMENT LAND

1082± acres
Lake County, FL

**MAJOR PRICE
REDUCTION**



PROPERTY PHOTOS

— Commercial Real Estate Investments | Management | Brokerage | Development | Land —

Maury L. Carter & Associates, Inc.
407-422-3144 | www.maurycarter.com

