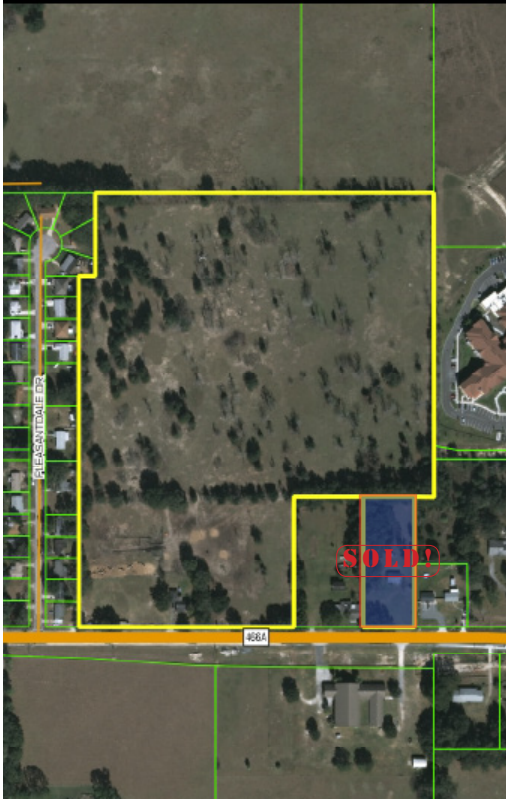


RESIDENTIAL DEVELOPMENT LAND NEAR CITY OF WILDWOOD/ THE VILLAGES

30± acres • Sumter County, FL

**PORTION
SOLD!**



LOCATION/ DESCRIPTION

On the north side of State Road 466A within the city limits of Wildwood, Sumter County, Florida. This places the property just west of the explosive growth that has occurred over the past 20 years in The Villages and just west of the Providence Independent Living facility.

SIZE

28.62± acres - AVAILABLE

1.38± acres - **SOLD!**

PRICE

\$3,000,000

ZONING/FLU

R-1/ Low Density Residential. The City of Wildwood is very receptive to a land use change to a medium density planned development.

ROAD FRONTAGE

650± feet along the western frontage and 150± feet along the eastern frontage of 466A.

UTILITIES

Sewer is stubbed out to the site from Inspiration Drive (Providence Independent Living). Water is located along SR 466A.

Offering subject to errors, omission, prior sale or withdrawal without notice.

LAND FOR SALE

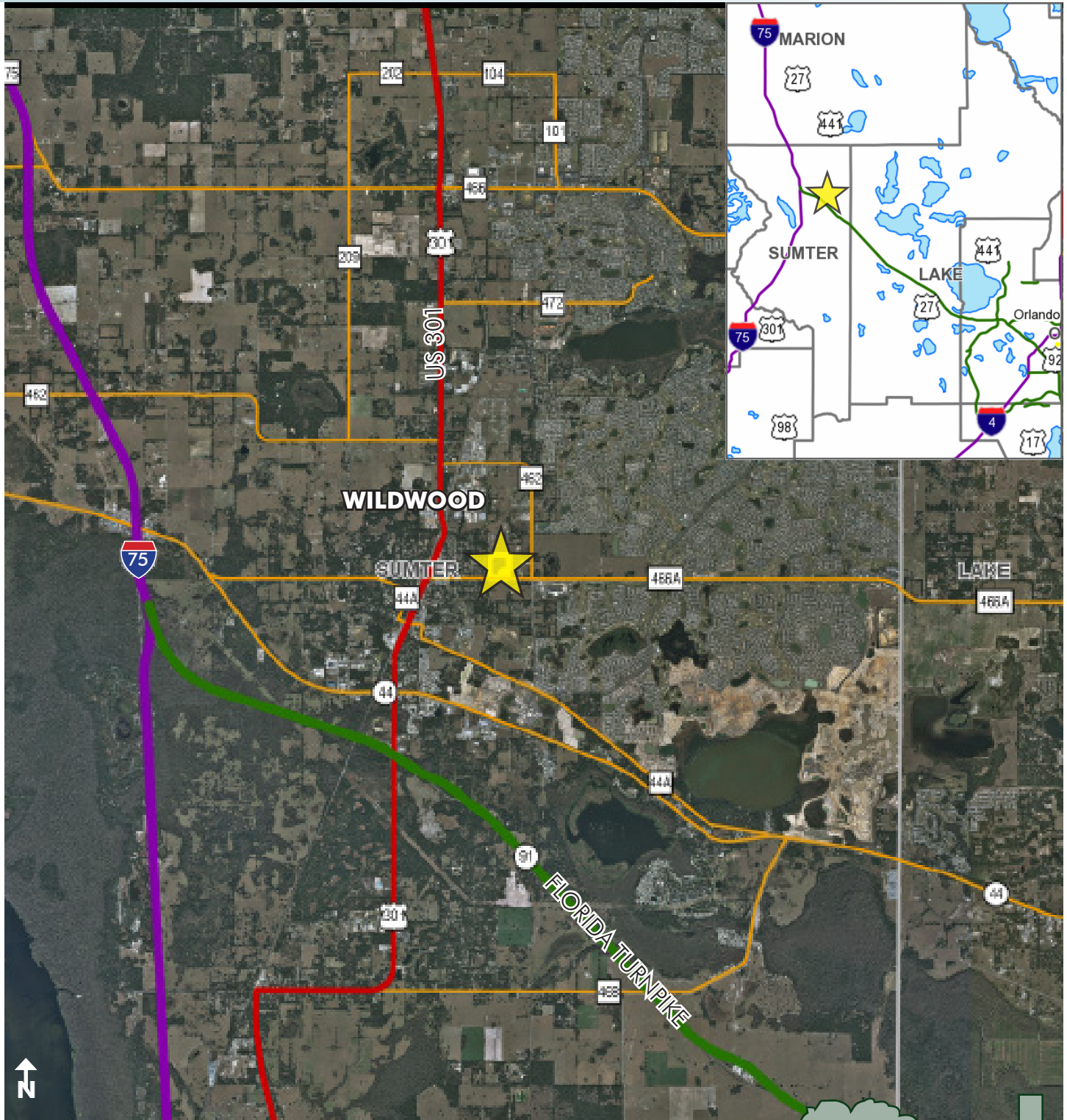
— Commercial Real Estate Investments | Management | Brokerage | Development | Land

Maury L. Carter & Associates, Inc.
407-422-3144 | www.maurycarter.com



RESIDENTIAL DEVELOPMENT LAND NEAR CITY OF WILDWOOD/ THE VILLAGES

30± acres • Sumter County, FL



LOCATION MAP

— Commercial Real Estate Investments | Management | Brokerage | Development | Land

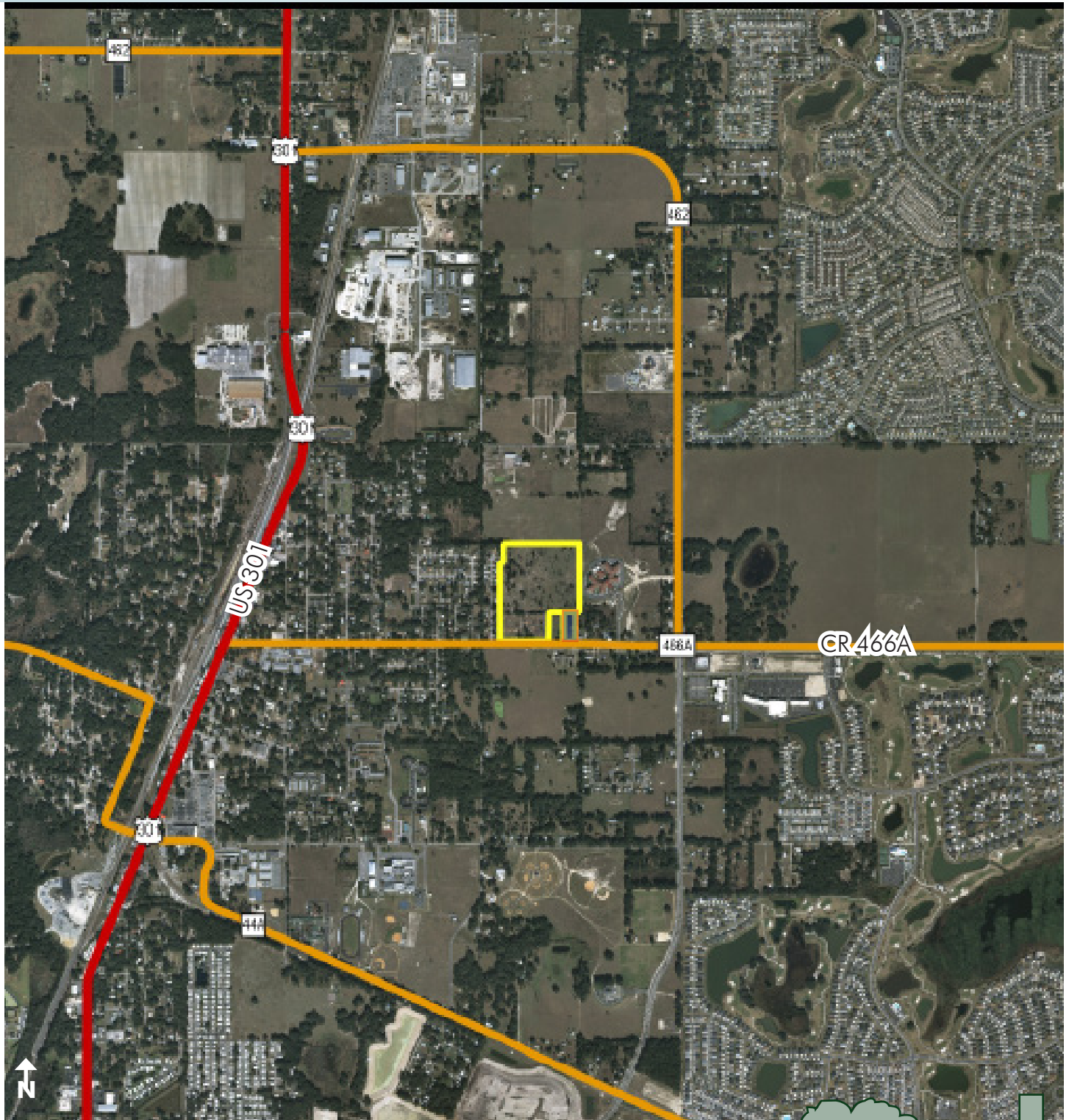
Maury L. Carter & Associates, Inc.
407-422-3144 | www.maurycarter.com



RESIDENTIAL DEVELOPMENT LAND NEAR CITY OF WILDWOOD/ THE VILLAGES

30± acres • Sumter County, FL

**PORTION
SOLD!**



REGIONAL MAP

— Commercial Real Estate Investments | Management | Brokerage | Development | Land

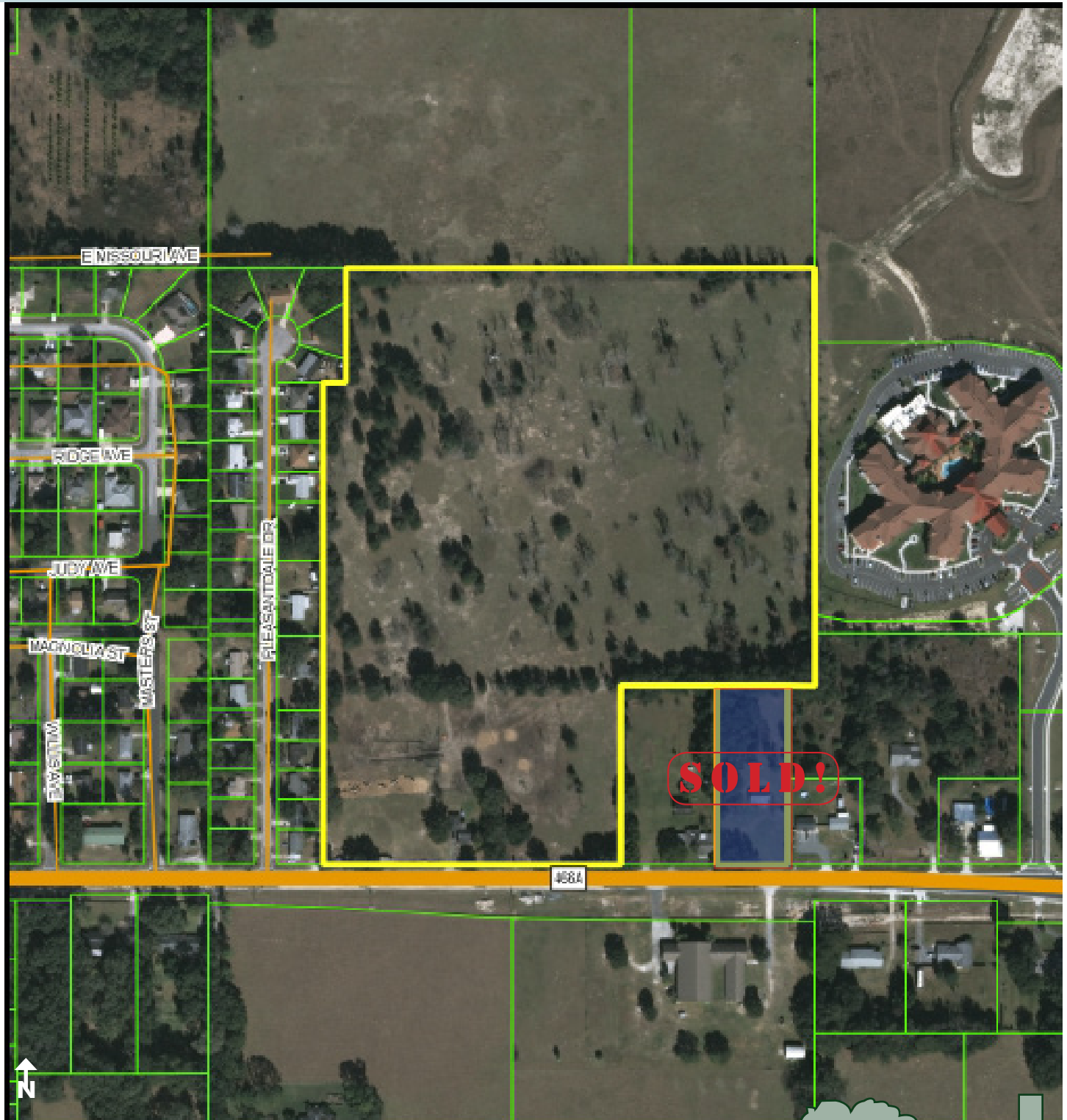
Maury L. Carter & Associates, Inc.
407-422-3144 | www.maurycarter.com



RESIDENTIAL DEVELOPMENT LAND NEAR CITY OF WILDWOOD/ THE VILLAGES

30± acres • Sumter County, FL

**PORTION
SOLD!**



PARCEL MAP

— Commercial Real Estate Investments | Management | Brokerage | Development | Land

Maury L. Carter & Associates, Inc.
407-422-3144 | www.maurycarter.com

