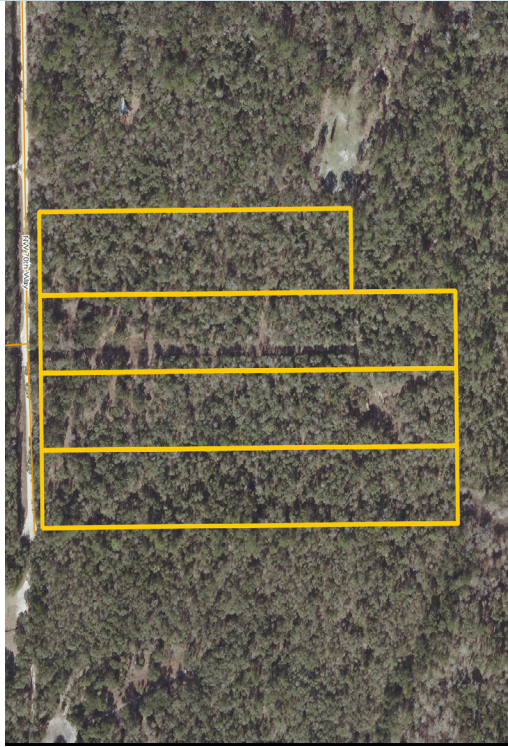


4 BUILDABLE LOTS IN BELL, FLORIDA

24.08± acres • Gilchrist County, FL



LOCATION

Bell, Gilchrist County, Florida.

SIZE

24.08± acres

PRICE

\$3,333/acre or \$80,000

ZONING

AG

PARCEL ID

32-08-14-0083-0000-0050

32-08-14-0083-0000-0040

32-08-14-0083-0000-0030

32-08-14-0083-0000-0060

DESCRIPTION

This property contains 24± pristine acres located a half mile east of the Suwannee River in Gilchrist County, FL. The subject property consists of a total of four buildable lots. There is an abundant amount of game and wildlife on site, making it perfect for hunters and outdoor enthusiasts. This property is a untouched, blank canvas for a home, estate or weekend get-a-way.

Offering subject to errors, omission, prior sale or withdrawal without notice.

LAND FOR SALE

— Commercial Real Estate Investments | Management | Brokerage | Development | Land —

Maury L. Carter & Associates, Inc.
407-422-3144 | www.maurycarter.com



4 BUILDABLE LOTS IN BELL, FLORIDA

24.08± acres • Gilchrist County, FL



PROPERTY MAP

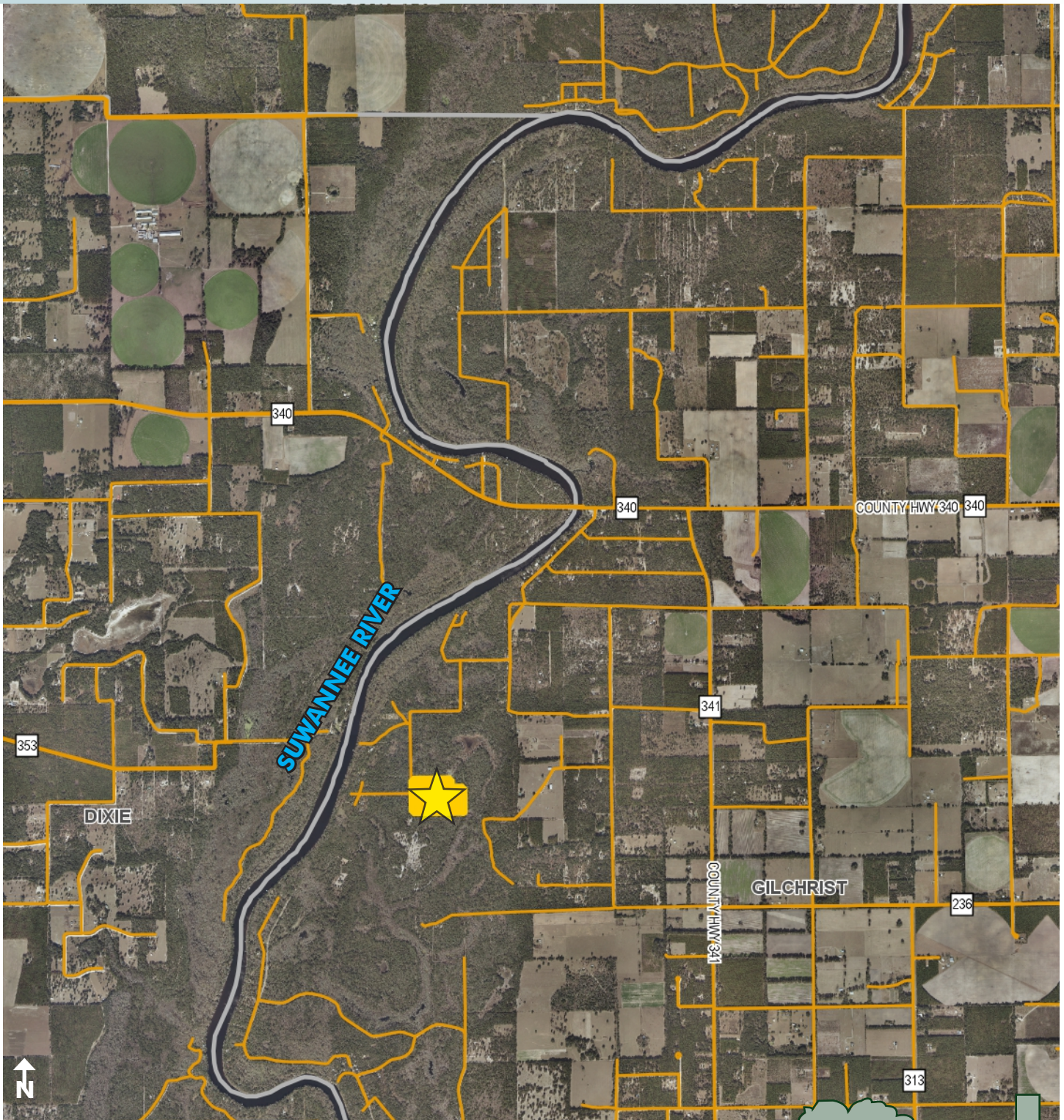
— Commercial Real Estate Investments | Management | Brokerage | Development | Land —

Maury L. Carter & Associates, Inc.
407-422-3144 | www.maurycarter.com



4 BUILDABLE LOTS IN BELL, FLORIDA

24.08± acres • Gilchrist County, FL



REGIONAL MAP

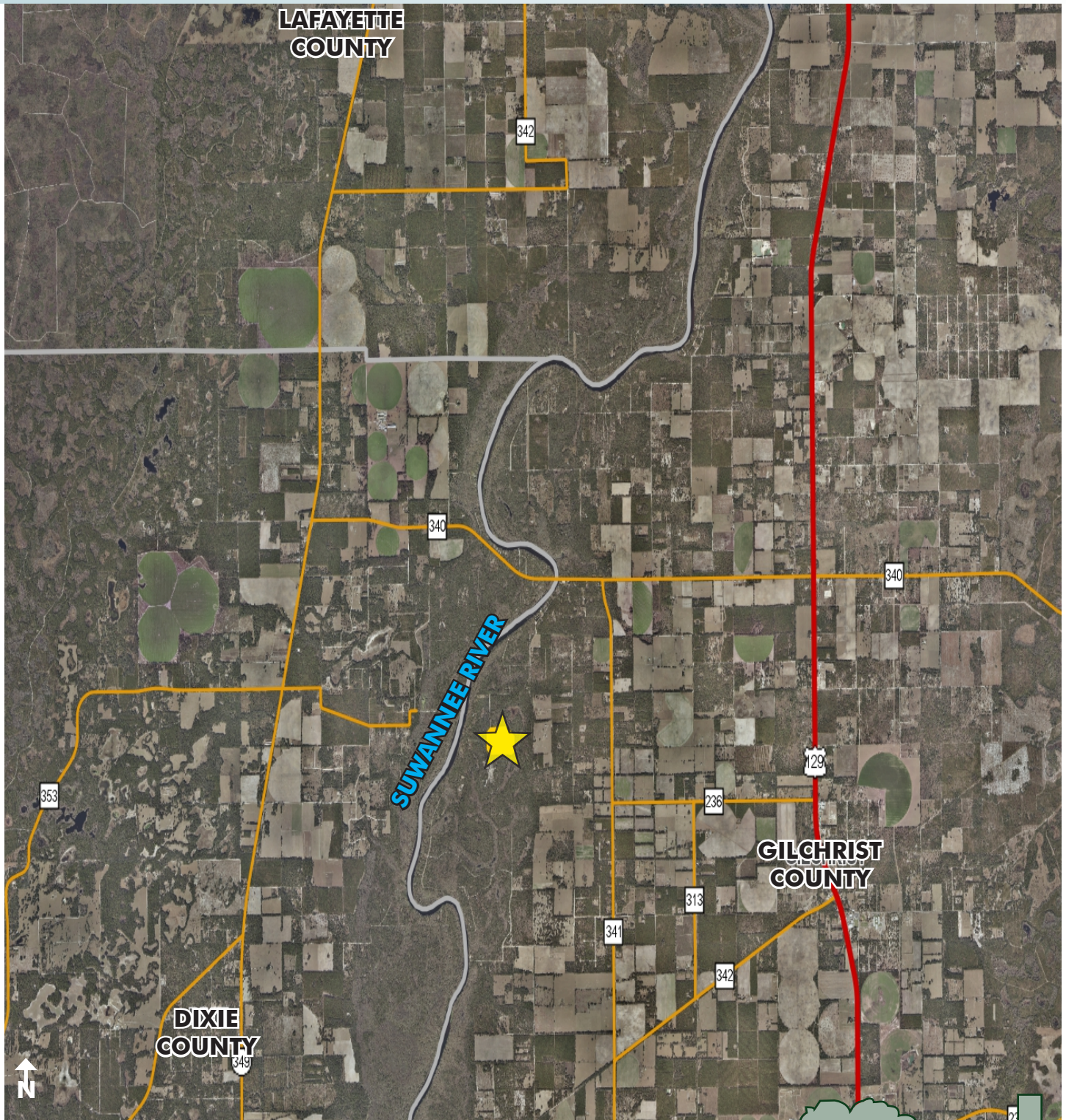
— Commercial Real Estate Investments | Management | Brokerage | Development | Land

Maury L. Carter & Associates, Inc.
407-422-3144 | www.maurycarter.com



4 BUILDABLE LOTS IN BELL, FLORIDA

24.08± acres • Gilchrist County, FL



LOCATION MAP

— Commercial Real Estate Investments | Management | Brokerage | Development | Land

Maury L. Carter & Associates, Inc.
407-422-3144 | www.maurycarter.com

