

COMMERCIAL NEAR VALENCIA COLLEGE

16.4± acres on East Irlo Bronson Memorial Highway
Osceola County, FL

LAND FOR SALE



LOCATION

1420 E. Vine Street. Property borders the Osceola/Kissimmee Chamber of Commerce, Valencia College - Osceola Campus and across from the BBRIDG Technology Park.

SIZE

16.4± acres

PRICE

\$2,285,000

ZONING

Highway Commercial/MU-V

ROAD FRONTAGE

450'± on East Vine Street - US 192/441

UTILITIES

Electric/water/sewer at front of property; Kissimmee Utility Authority, Toho Water Authority

DESCRIPTION

Tremendous opportunities with wide frontage on Hwy 192 next to Valencia College. Directly across from the BRIDG Technology Park. Located within the City of Kissimmee's East Vine Street Redevelopment Area and 1 mile from the Florida Turnpike. Opportunities for multi-family, student housing, highway commercial development.

Offering subject to errors, omission, prior sale or withdrawal without notice.

— Commercial Real Estate Investments | Management | Brokerage | Development | Land

Maury L. Carter & Associates, Inc.
407-422-3144 | www.maurycarter.com



COMMERCIAL NEAR VALENCIA COLLEGE

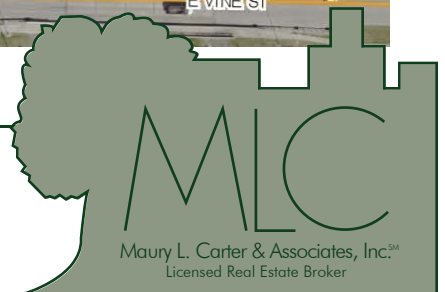
16.4± acres on East Irlo Bronson Memorial Highway
Osceola County, FL



PROPERTY MAP

— Commercial Real Estate Investments | Management | Brokerage | Development | Land

Maury L. Carter & Associates, Inc.
407-422-3144 | www.maurycarter.com



COMMERCIAL NEAR VALENCIA COLLEGE

16.4± acres on East Irlo Bronson Memorial Highway
Osceola County, FL



REGIONAL MAP

— Commercial Real Estate Investments | Management | Brokerage | Development | Land

Maury L. Carter & Associates, Inc.
407-422-3144 | www.maurycarter.com



COMMERCIAL NEAR VALENCIA COLLEGE

16.4± acres on East Irlo Bronson Memorial Highway
Osceola County, FL



LOCATION MAP



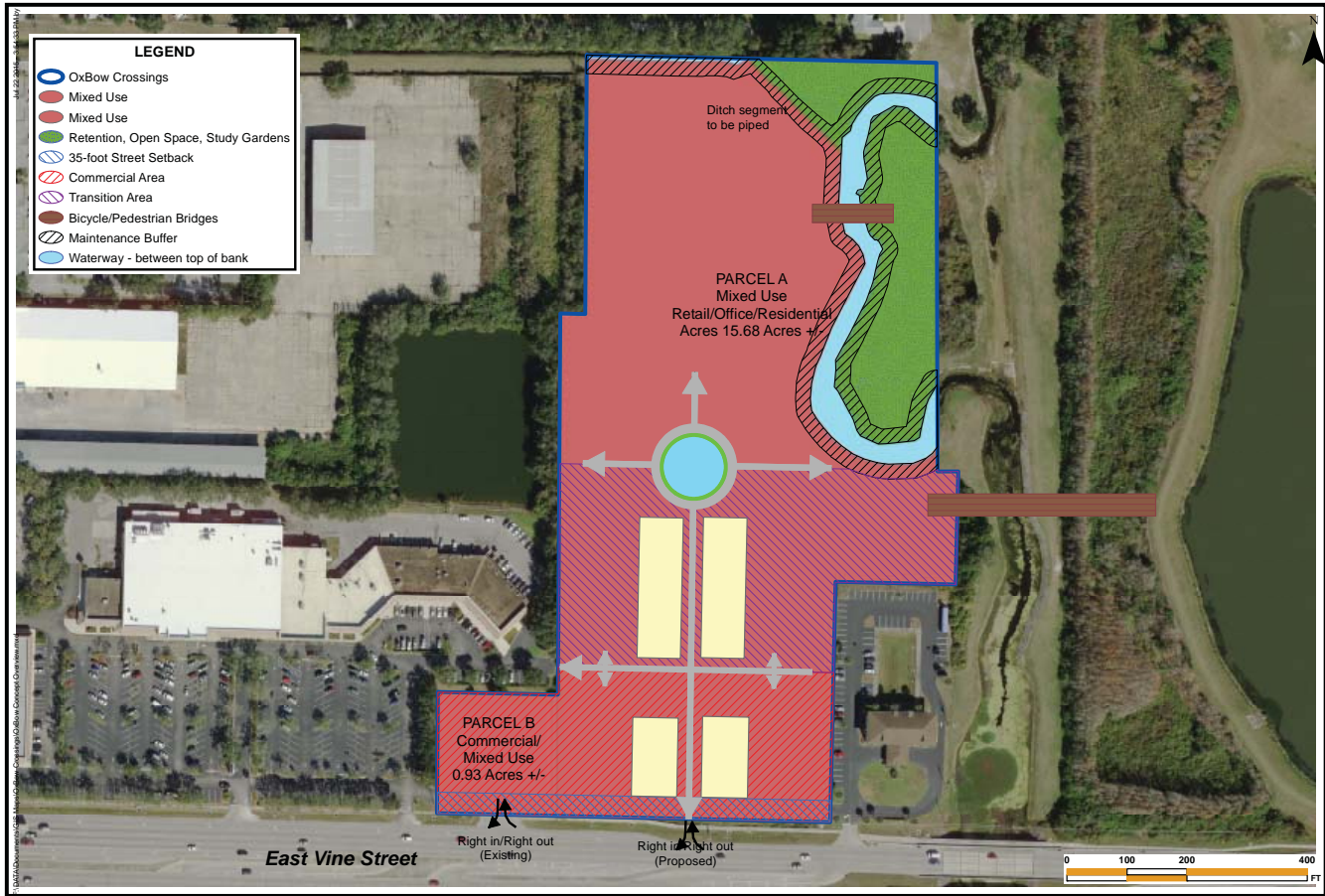
— Commercial Real Estate Investments | Management | Brokerage | Development | Land

Maury L. Carter & Associates, Inc.
407-422-3144 | www.maurycarter.com



COMMERCIAL NEAR VALENCIA COLLEGE

16.4± acres on East Irlo Bronson Memorial Highway
Osceola County, FL



ENHANCE:
CONCEPT PLAN

HCI
100 E Sybilia Avenue, Suite 375
Kissimmee, FL 32751
407-422-3144
www.hciplanning.com

DRAWN: [Blank]
DATE: 7/22/2015

LOCATION:
NE Corner of Michigan & East Vine
Kissimmee, FL

TITLE:
OXBOW CROSSINGS
SOURCE: [Blank]

CONCEPTUAL LAND USE PLAN



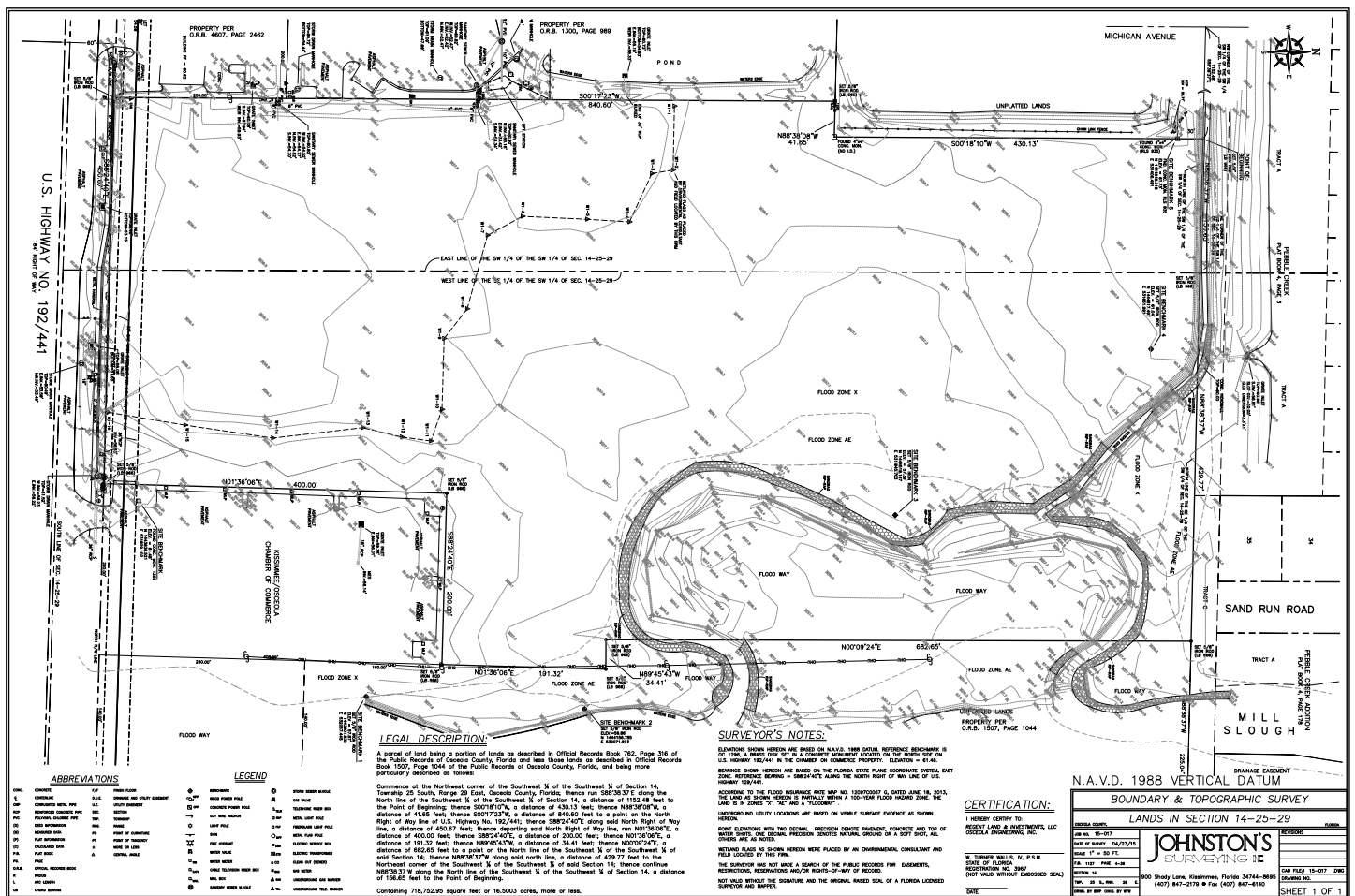
— Commercial Real Estate Investments | Management | Brokerage | Development | Land

Maury L. Carter & Associates, Inc.
407-422-3144 | www.maurycarter.com



COMMERCIAL NEAR VALENCIA COLLEGE

16.4± acres on East Irlo Bronson Memorial Highway
Osceola County, FL



SITE BOUNDARY/SURVEY

— Commercial Real Estate Investments | Management | Brokerage | Development | Land

Maury L. Carter & Associates, Inc.
407-422-3144 | www.maurycarter.com

