

DE LEON SPRINGS COMMERCIAL DEVELOPMENT LAND

13.14± acres • Volusia County, FL

**PRICE
REDUCED**

LAND FOR SALE



LOCATION

Located on the northeast quadrant of US Highway 17 and Dundee Avenue within the Rural Community of De Leon Springs.

SIZE

13.14± acres
Approximately 10 acres encumbered with an FDOT drainage easement.

PRICE

PRICE REDUCED - NOW: \$150,000

~~ORIGINALLY: \$345,900~~ ~~REDUCED TO: \$175,000~~

LAND USE

The site has a Future Land Use of Rural Community that permits a variety of neighborhood businesses and low intensity commercial, retail and personal services developments.

ROAD FRONTAGE

The primary frontage consists of 550 feet along the eastern right of way line of US 17.

UTILITIES

Well and septic.

DESCRIPTION

This land provides a unique development opportunity to provide commercial uses to the DeLeon Springs community. US Highway 17 is a major north/south arterial that extends from Deland to Palatka and beyond.

Offering subject to errors, omission, prior sale or withdrawal without notice.

— Commercial Real Estate Investments | Management | Brokerage | Development | Land

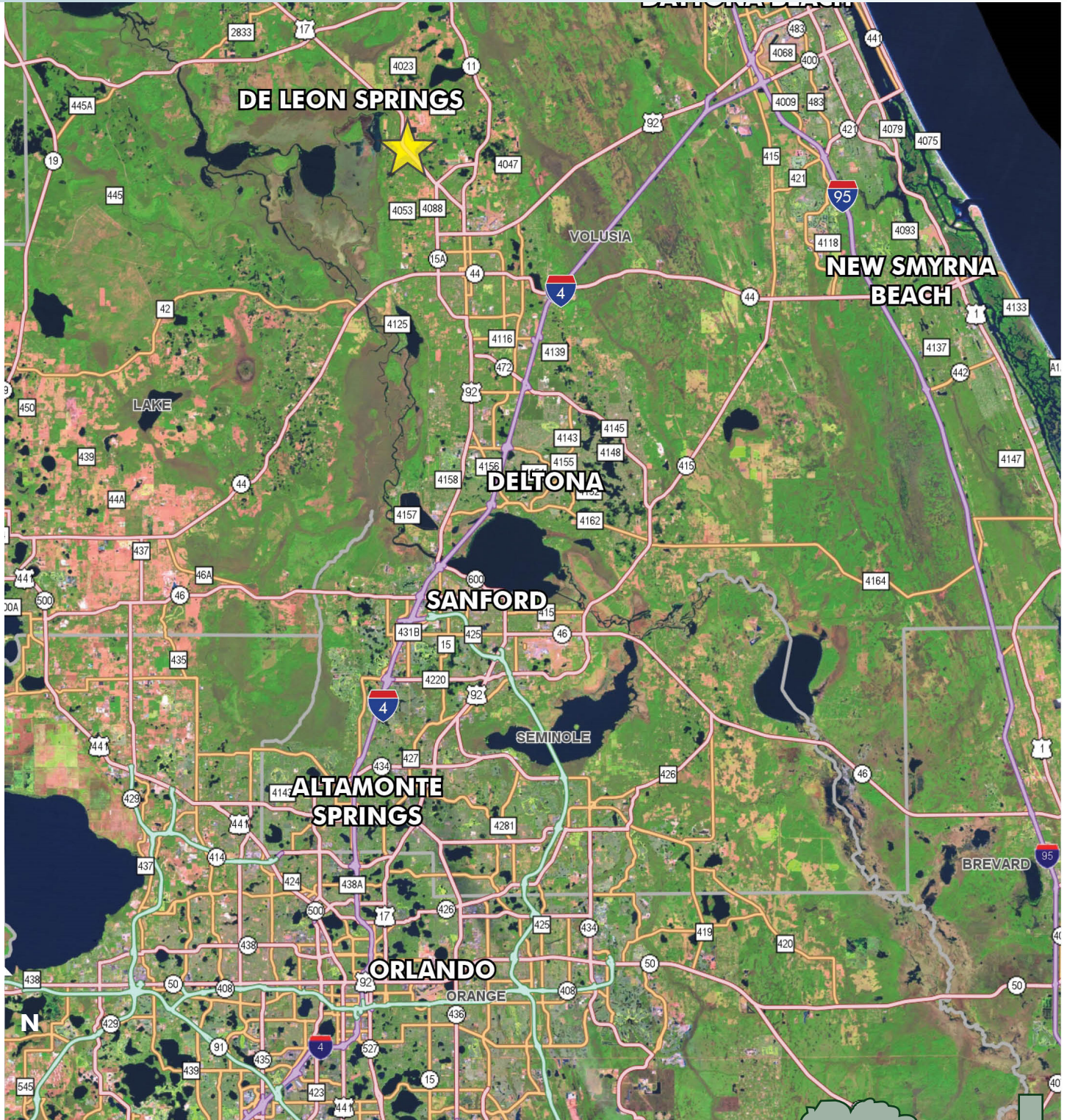
Maury L. Carter & Associates, Inc.
407-422-3144 | www.maurycarter.com



DE LEON SPRINGS COMMERCIAL DEVELOPMENT LAND

13.14± acres • Volusia County, FL

**PRICE
REDUCED**



LOCATION MAP

— Commercial Real Estate Investments | Management | Brokerage | Development | Land

Maury L. Carter & Associates, Inc.
407-422-3144 | www.maurycarter.com



DE LEON SPRINGS COMMERCIAL DEVELOPMENT LAND

13.14± acres • Volusia County, FL

PRICE REDUCED



REGIONAL MAP

— Commercial Real Estate Investments | Management | Brokerage | Development | Land

Maury L. Carter & Associates, Inc.
407-422-3144 | www.maurycarter.com



DE LEON SPRINGS COMMERCIAL DEVELOPMENT LAND

13.14± acres • Volusia County, FL

PRICE REDUCED



PROPERTY MAP

— Commercial Real Estate Investments | Management | Brokerage | Development | Land

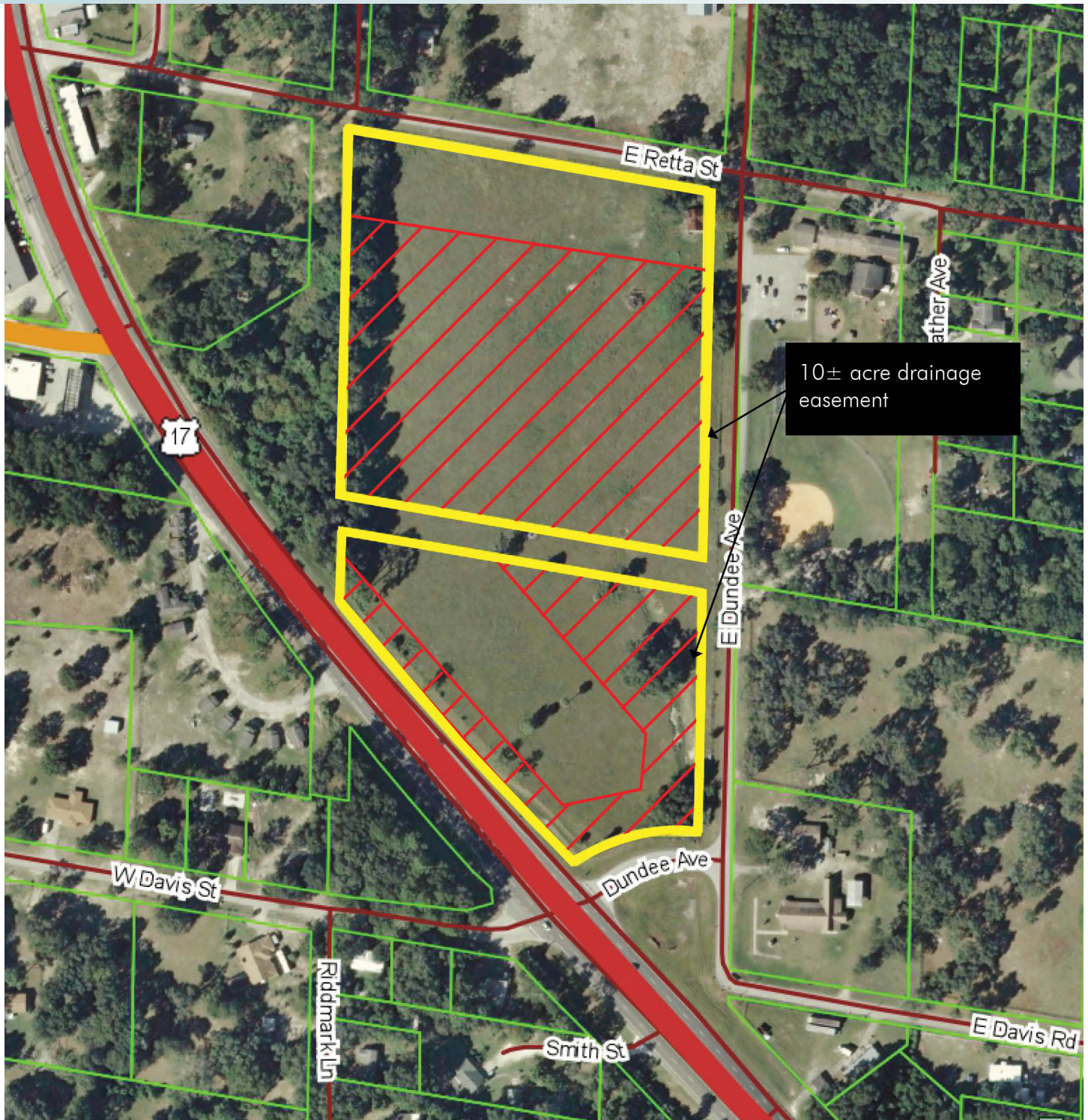
Maury L. Carter & Associates, Inc.
407-422-3144 | www.maurycarter.com



DE LEON SPRINGS COMMERCIAL DEVELOPMENT LAND

13.14± acres • Volusia County, FL

PRICE REDUCED



— Commercial Real Estate Investments | Management | Brokerage | Development | Land

Maury L. Carter & Associates, Inc.
407-422-3144 | www.maurycarter.com

