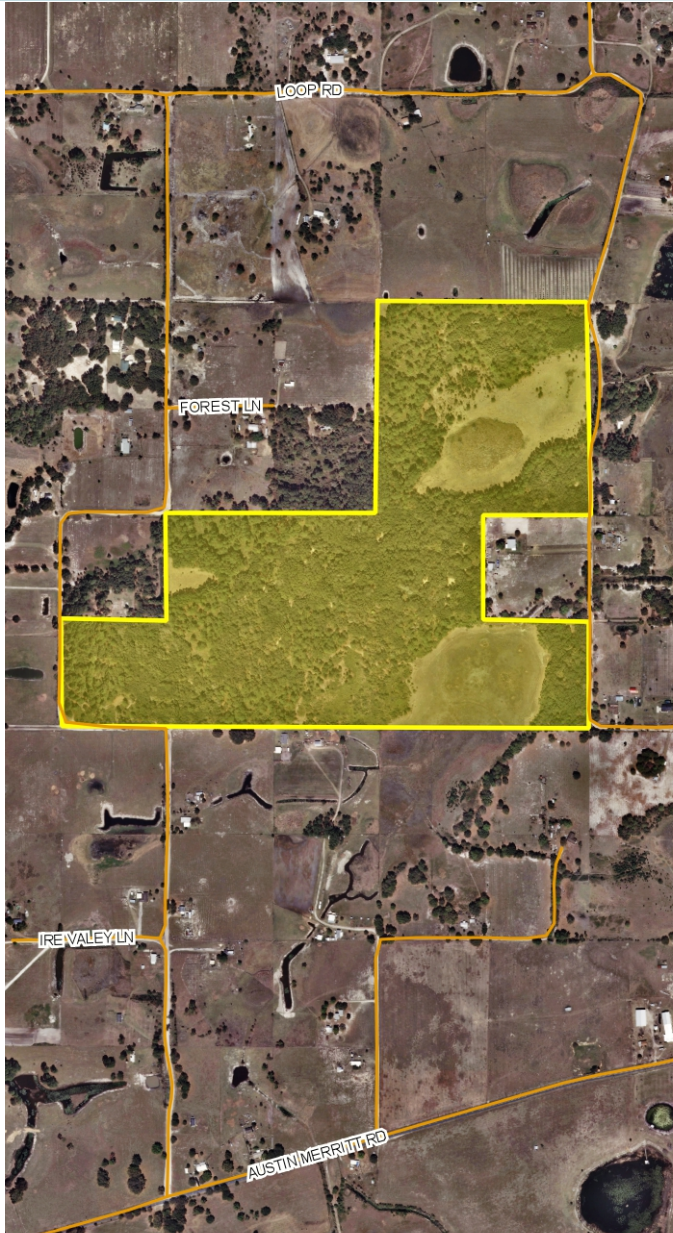


LAKE COUNTY LOOP ROAD

120± acres

Lake County, FL



LOCATION/DESCRIPTION

One mile west of Highway 33 and 1/2 mile north of Austin Merritt Road. Bounded on the east and west by Loop Road. Ideal for recreation, country living, equestrian estate, cattle ranching, etc.

SIZE

120± acres

PRICE

\$479,880 (\$3,999/acre)

ZONING/FUTURE LAND USE

Zoning: Agricultural (1 du/5 acres)
FLU: Rural (1 du/5 acres)

ROAD FRONTAGE

1,800'± on Loop Road
1,200'± on East Loop Road

Offering subject to errors, omission, prior sale or withdrawal without notice.

LAND FOR SALE

— Commercial Real Estate Investments | Management | Brokerage | Development | Land

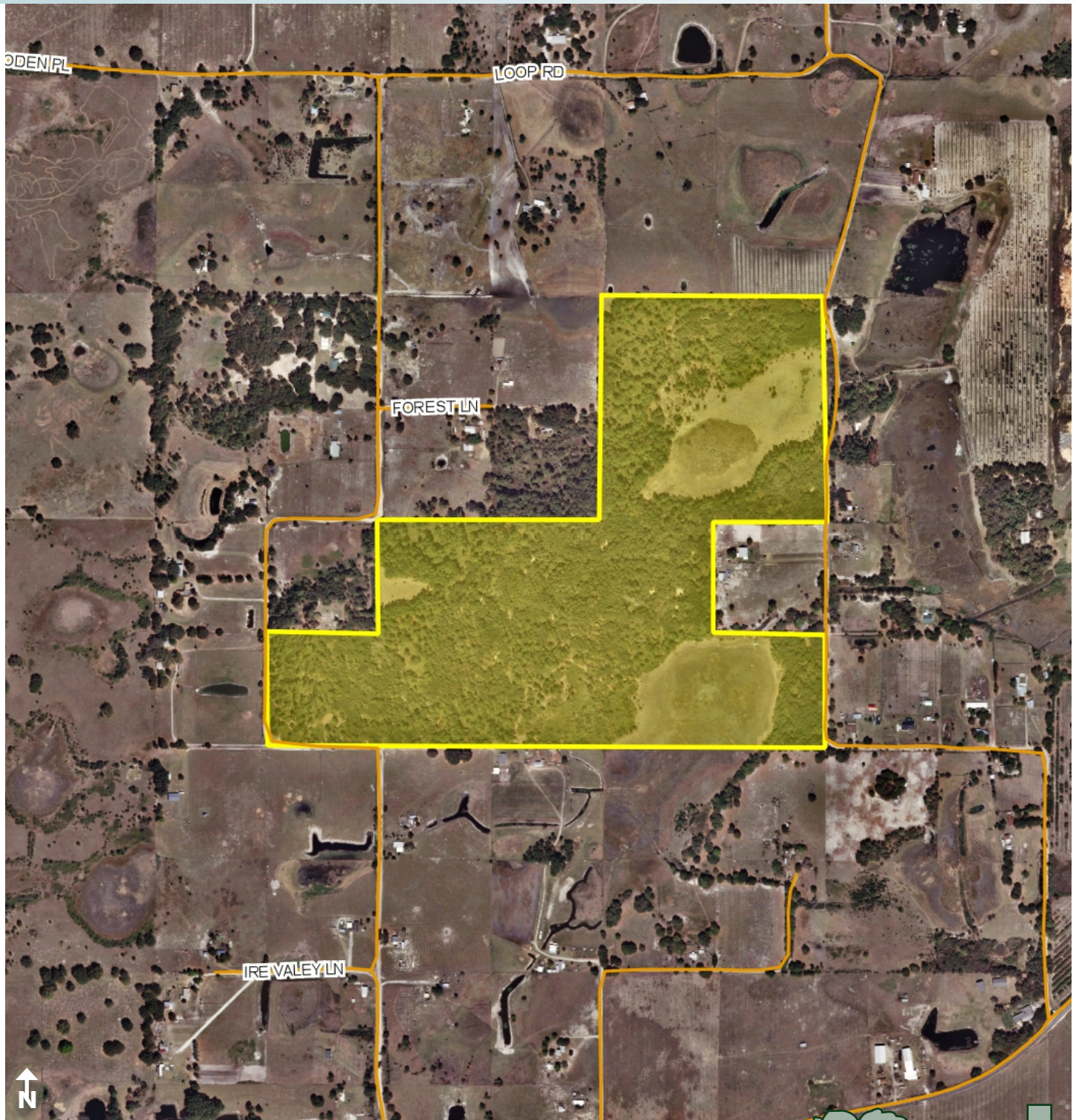
Maury L. Carter & Associates, Inc.
407-422-3144 | www.maurycarter.com



LAKE COUNTY LOOP ROAD

120± acres

Lake County, FL



PROPERTY MAP

— Commercial Real Estate Investments | Management | Brokerage | Development | Land

Maury L. Carter & Associates, Inc.
407-422-3144 | www.maurycarter.com



LAKE COUNTY LOOP ROAD

120± acres

Lake County, FL



LOCATION MAP

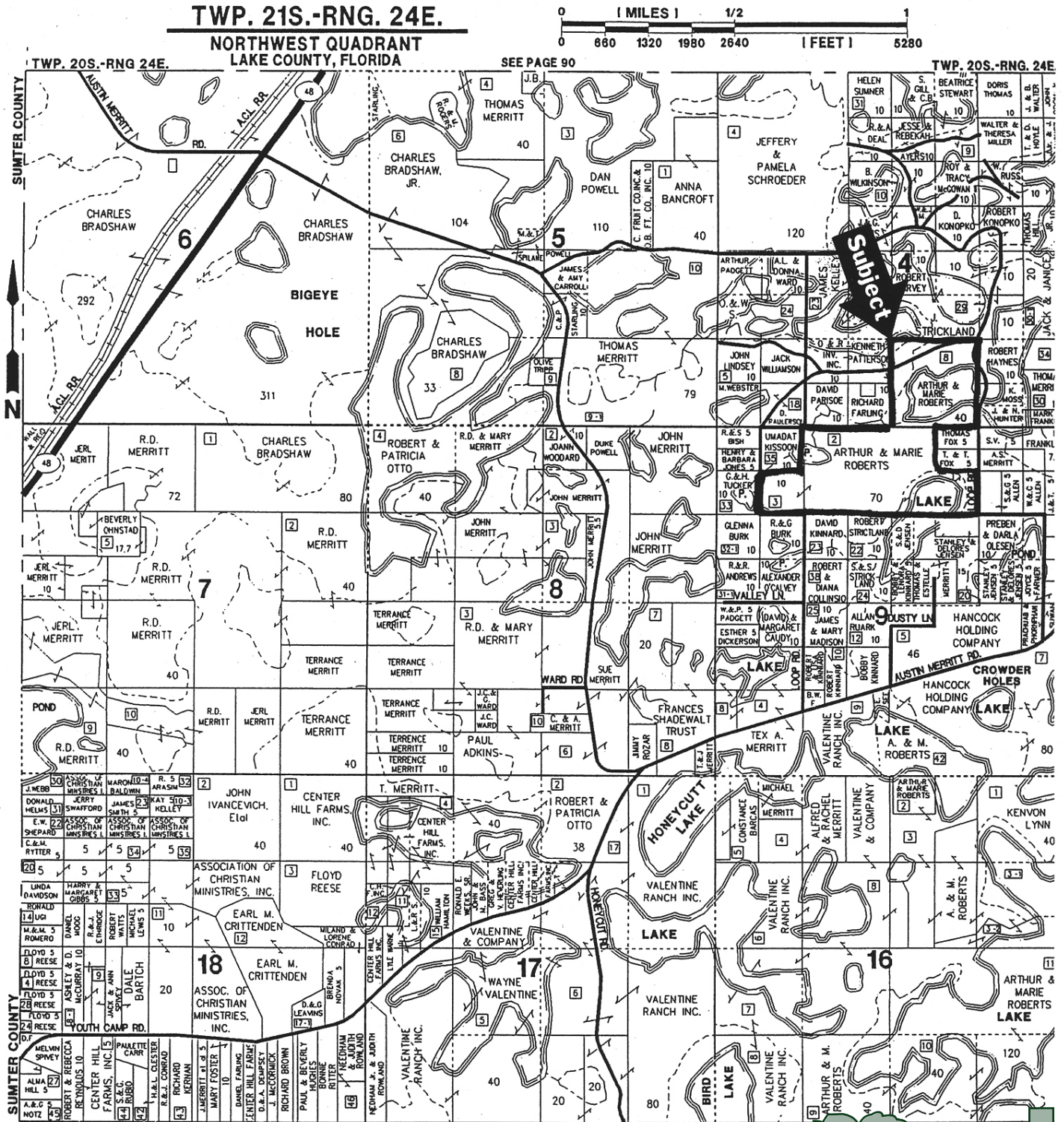
— Commercial Real Estate Investments | Management | Brokerage | Development | Land

Maury L. Carter & Associates, Inc.
407-422-3144 | www.maurycarter.com



LAKE COUNTY LOOP ROAD

120± acres
Lake County, FL



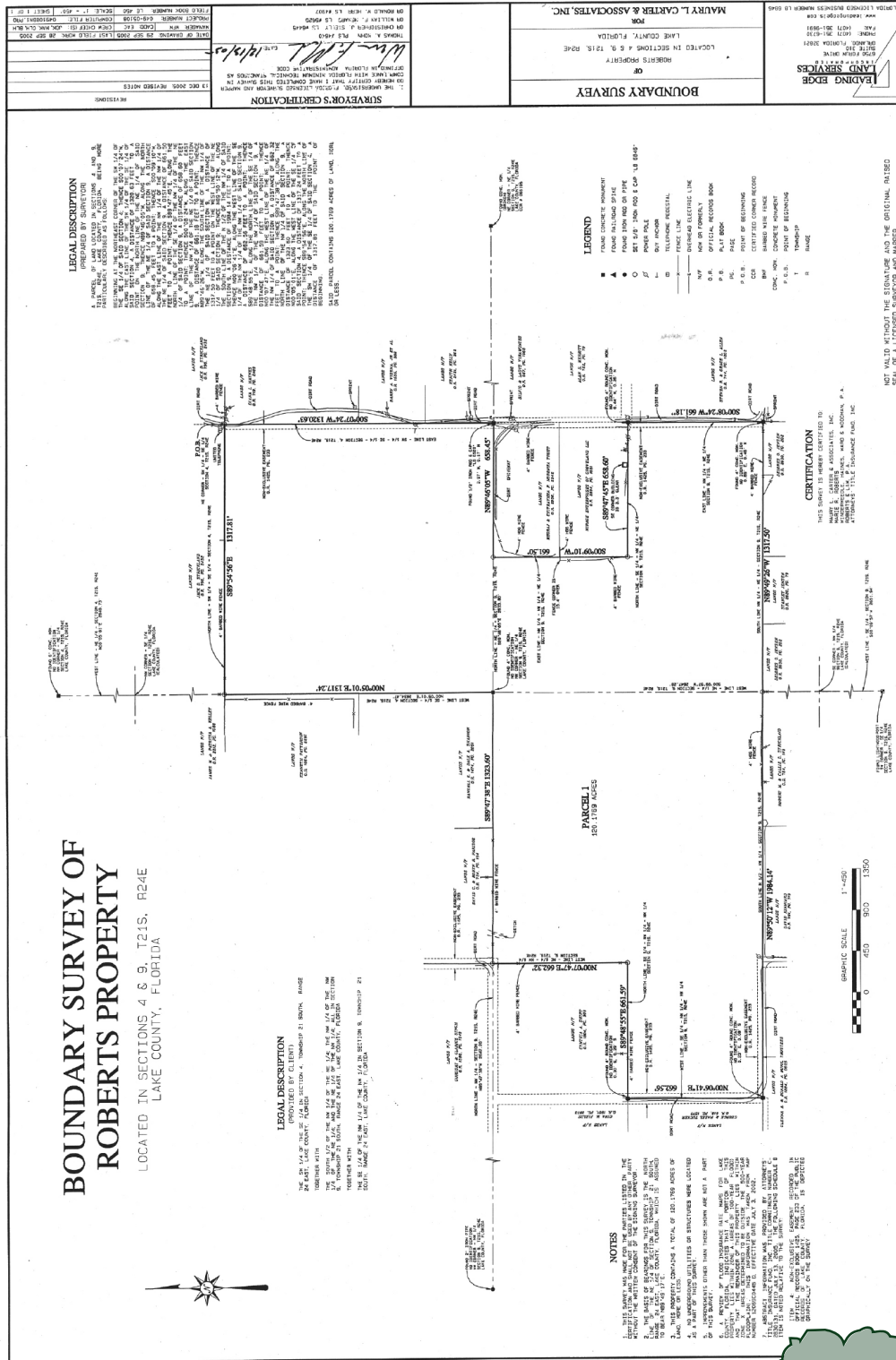
— Commercial Real Estate Investments | Management | Brokerage | Development | Land

Maury L. Carter & Associates, Inc.
407-422-3144 | www.maurycarter.com



LAKE COUNTY LOOP ROAD

120± acres
Lake County, FL



**BOUNDARY SURVEY OF
ROBERTS PROPERTY**
LOCATED IN SECTIONS 4 & 8, T21S, R24E
LAKE COUNTY, FLORIDA

— Commercial Real Estate Investments | Management | Brokerage | Development | Land

Maury L. Carter & Associates, Inc.
407-422-3144 | www.maurycarter.com

