

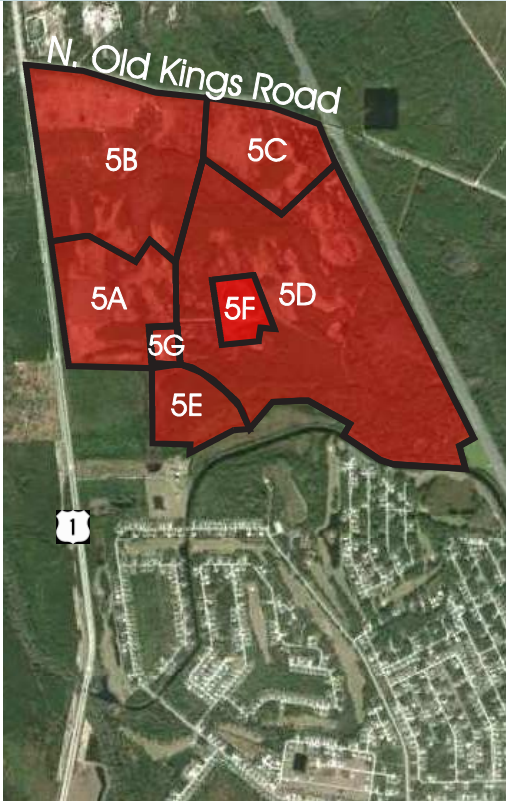
# PALM COAST PARK

Tracts 5A, 5B, 5C, 5D, 5E, 5F & 5G

725± acres (gross) in Flagler County, FL

**UNDER  
CONTRACT**

LAND FOR SALE



## LOCATION

Located at intersection of US 1 and N. Old Kings Rd, 5 min from the new I-95 interchange at Matanzas Woods Pkwy.

## SIZE

725± acres (gross); 250± acres (est. net)  
7 Tracts

## PRICE

**NOW: \$5,400,000** WAS: ~~\$6,000,000~~

*10% Reduction in price!*

CDD Bond Obligation paid off by Seller at Closing.

## ENTITLEMENTS

Approved for 600 residential units.

## DESCRIPTION

Development opportunity within 5 minutes of I-95! Perfectly situated just over 5 miles from the golden beaches of Palm Coast and its ever-expanding offering of river and ocean view restaurants, this is the last treasure along the Flagler and Volusia Coast. A dozen golf courses are within 15 minutes of the project and for the boater, there are numerous marinas and the Intracoastal Waterway just under 5 miles away.

Led by the oceanfront resorts of Hammock Dunes and golf communities such as Grand Haven, Palm Coast enjoyed explosive growth throughout the 1990s and early 2000s and now exceeds 100,000 in population. Even during the great recession, Palm Coast added several national retail stores, a major movie theatre and saw the expansion of Florida Hospital. With the economic recovery in bloom, the region is now poised to retake its position as one of Florida's fastest growing Metropolitan Statistical Areas.

Offering subject to errors, omission, prior sale or withdrawal without notice.



Maury L. Carter & Associates, Inc.  
407-422-3144 | [www.maurycarter.com](http://www.maurycarter.com)

CO-LISTED WITH



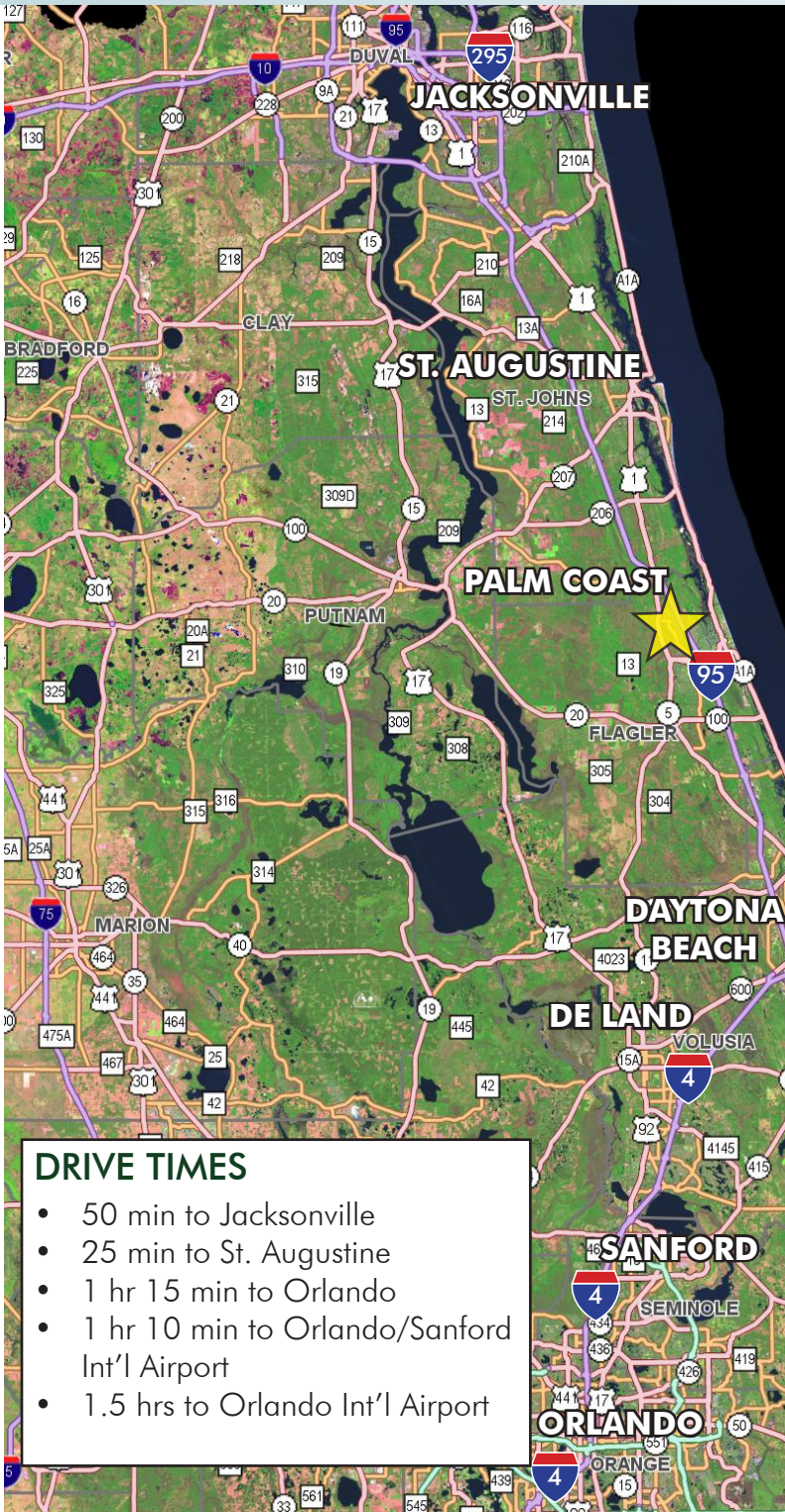
386-446-6226  
[www.palmcoast.com](http://www.palmcoast.com)

# PALM COAST PARK

Tracts 5A, 5B, 5C, 5D, 5E, 5F & 5G

725± acres (gross) in Flagler County, FL

**UNDER CONTRACT**



### DRIVE TIMES

- 50 min to Jacksonville
- 25 min to St. Augustine
- 1 hr 15 min to Orlando
- 1 hr 10 min to Orlando/Sanford Int'l Airport
- 1.5 hrs to Orlando Int'l Airport

LOCATION MAP

### PALM COAST PARK

The site is part of Palm Coast Park, a 4,700 acre mixed-use development project which will include single-family, multi-family residential neighborhoods and projects, a K-8 public school, and commercial developments including a national retailer anchored power center. The project will be an urban centered community with natural elements including multiple parks and a multi-purpose trail.

### LAND USE BY TRACT

TRACT	GROSS ACRES	EST. NET ACRES	ANTICIPATED USE
5A	85	45	Multi-Family
5B	173	102	Single-Family
5C	65	26	Estate Single-Family
5D/5E	375	67	Mixed-Single/ Multi-Family
5F/5G	27	10	Fire Station/ Park



Maury L. Carter & Associates, Inc.  
407-422-3144 | www.maurycarter.com

CO-LISTING



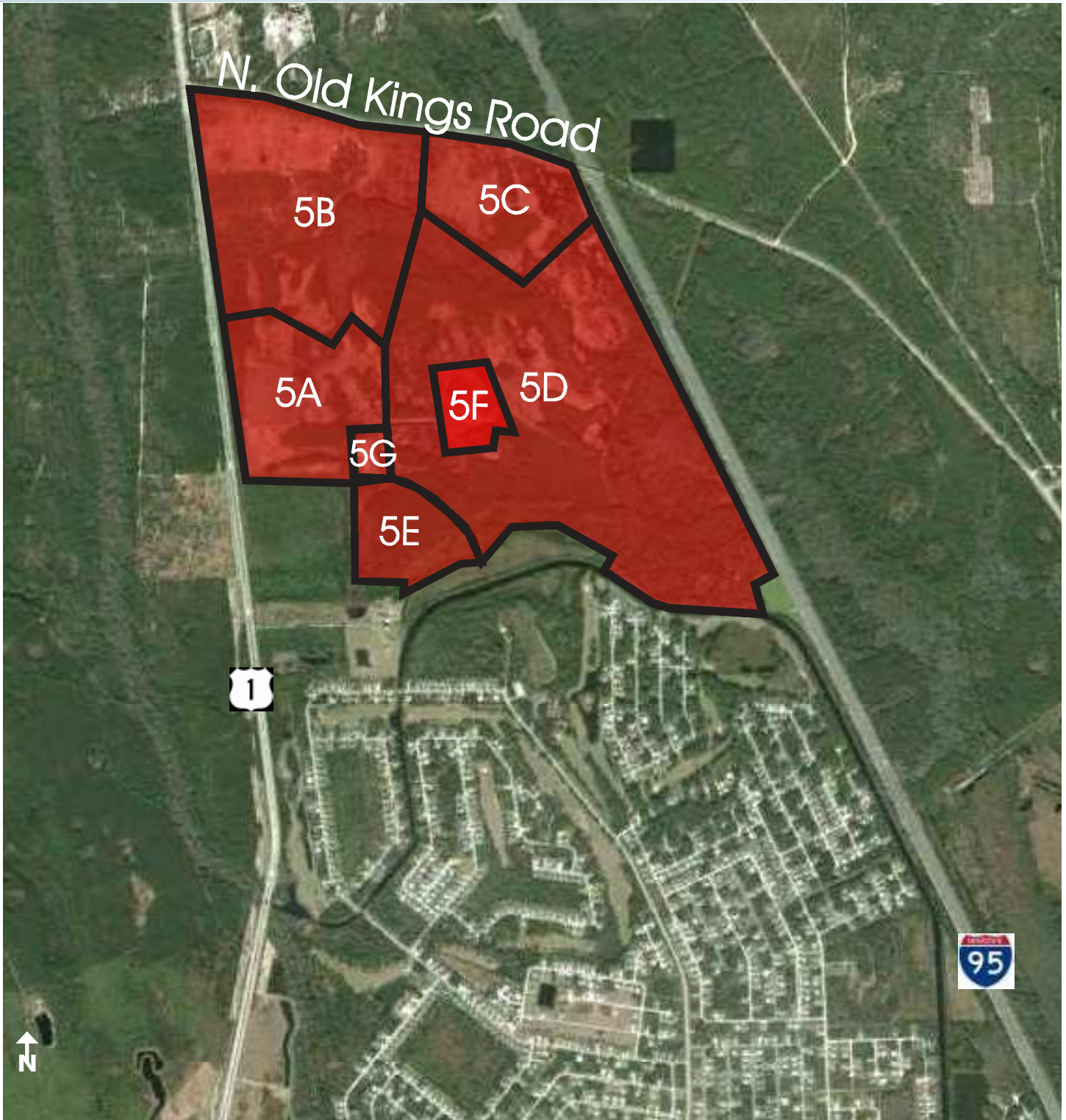
386-446-6226  
www.palmcoast.com

# PALM COAST PARK

Tracts 5A, 5B, 5C, 5D, 5E, 5F & 5G

725± acres (gross) in Flagler County, FL

**UNDER  
CONTRACT**



PARCEL MAP



Maury L. Carter & Associates, Inc.  
407-422-3144 | [www.maurycarter.com](http://www.maurycarter.com)

CO-LISTING



386-446-6226  
[www.palmcoast.com](http://www.palmcoast.com)