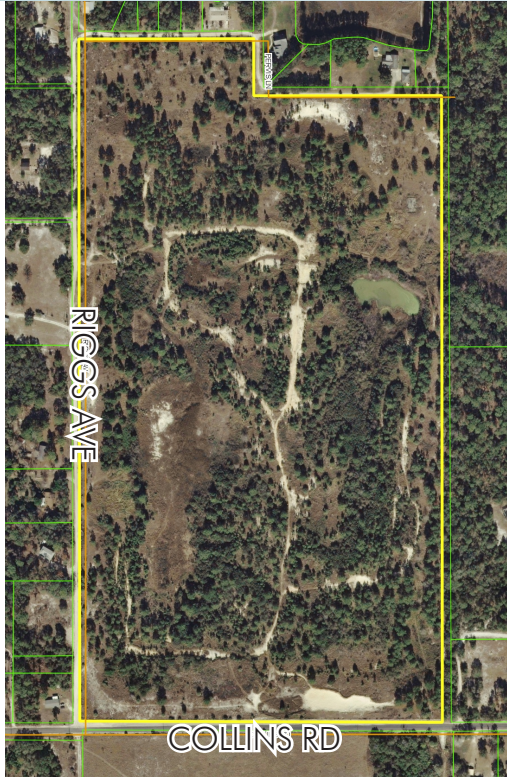


# POTENTIAL SF DEVELOPMENT IN DELTONA

69± acres

Deltona, Volusia County, FL

**UNDER  
CONTRACT**



## LOCATION/DESCRIPTION

Located on Collins Road, just west of Hwy 415 within the city limits of Deltona, FL. Within close proximity to major cities and roadways: 45 min. from downtown Orlando, 30 min. from New Smyrna Beach, and approximately 15 min. from the Orlando-Sanford International Airport. The property is surrounded by residential developments with major retail located close by, including a Walmart Super Center. More growth is expected for this area with the expansion of Hwy 415, a major arterial corridor servicing the area. The project, set for fall of 2015, will expand the roadway to four lanes.

## SIZE

69± acres

## PRICE

**PRICE REDUCED!** WAS \$690,000  
NOW \$586,500 or \$8,500/acre

## ZONING/FUTURE LAND USE

RE1 (Residential Estate 1)/Low Density Residential  
(1du/ac)

## ROAD FRONTAGE

1,281'± on Collins Road

## UTILITIES

City of Deltona (on Doyle Road, not on site)

## PARCEL ID

01-19-31-00-00-0050

Offering subject to errors, omission, prior sale or withdrawal without notice.



POTENTIAL SINGLE FAMILY  
RESIDENTIAL DEVELOPMENT  
LAND FOR SALE

— Commercial Real Estate Investments | Management | Brokerage | Development | Land —

**Maury L. Carter & Associates, Inc.**  
407-422-3144 | [www.maurycarter.com](http://www.maurycarter.com)





# POTENTIAL SF DEVELOPMENT IN DELTONA

69± acres

Deltona, Volusia County, FL

**UNDER  
CONTRACT**



PROPERTY MAP

— Commercial Real Estate Investments | Management | Brokerage | Development | Land

Maury L. Carter & Associates, Inc.  
407-422-3144 | [www.maurycarter.com](http://www.maurycarter.com)



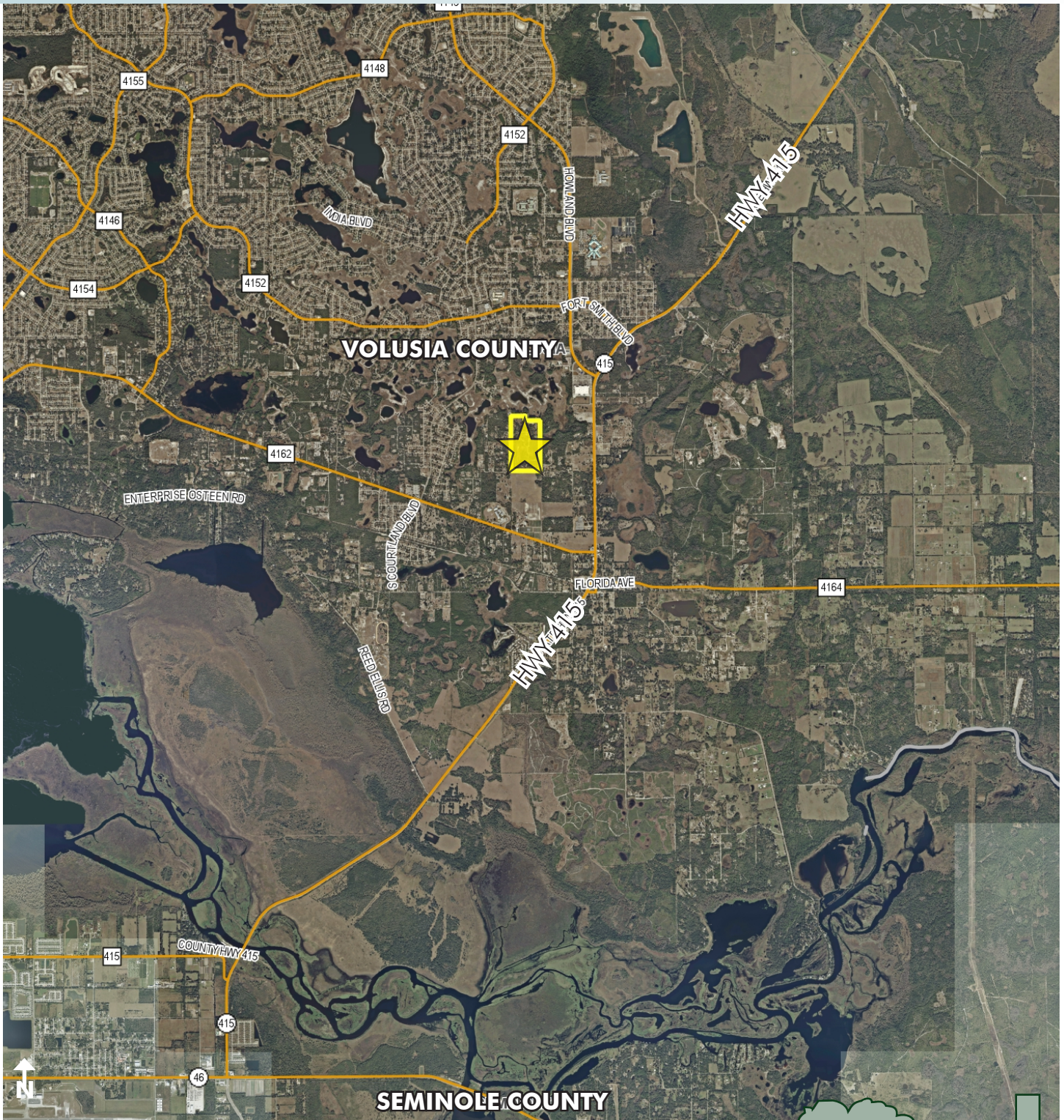


# POTENTIAL SF DEVELOPMENT IN DELTONA

69± acres

Deltona, Volusia County, FL

**UNDER  
CONTRACT**



REGIONAL MAP

— Commercial Real Estate Investments | Management | Brokerage | Development | Land

Maury L. Carter & Associates, Inc.  
407-422-3144 | [www.maurycarter.com](http://www.maurycarter.com)



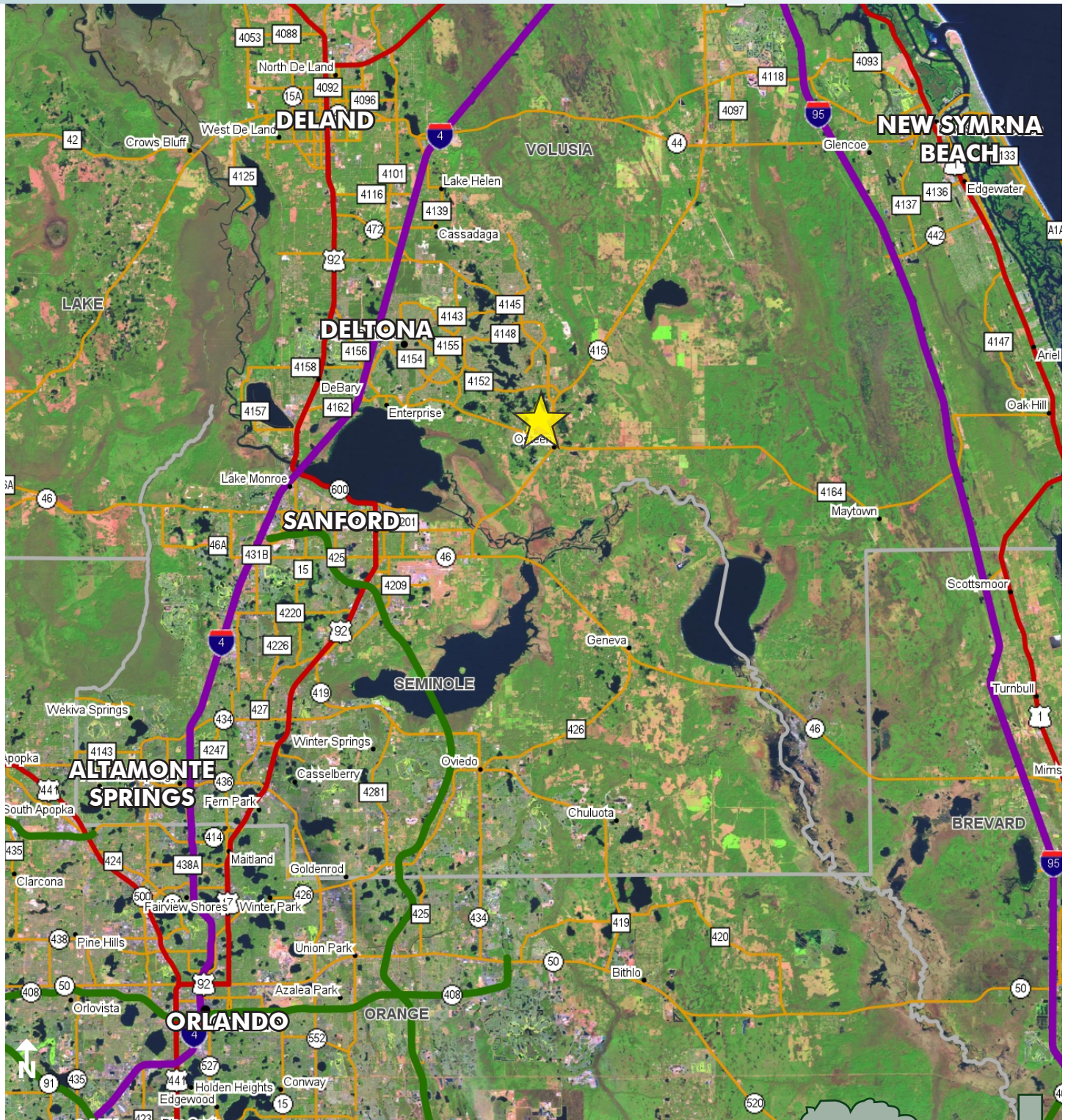


# POTENTIAL SF DEVELOPMENT IN DELTONA

69± acres

Deltona, Volusia County, FL

**UNDER  
CONTRACT**



LOCATION MAP

— Commercial Real Estate Investments | Management | Brokerage | Development | Land

Maury L. Carter & Associates, Inc.  
407-422-3144 | [www.maurycarter.com](http://www.maurycarter.com)

