

# FOUR CORNERS AREA PROPERTY

7.93± acres

Osceola County, FL



## LOCATION

Located on Westside Boulevard in Osceola County, Florida

## SIZE

7.93± acres

## PRICE

\$1,425,000

## ZONING

Mixed-use, short-term overlay

## ROAD FRONTAGE

610'± on Westside Boulevard

## UTILITIES

Duke Energy and Toho Water Authority

## DESCRIPTION

Prime site for townhomes, light commercial, charter school, church, etc. This property is inside the short-term overlay area for Osceola County. Quality site and location that is priced to sell. Southeast of the property and across Westside Boulevard is a K-8 school.

## PARCEL IDs

07-25-27-0000-0013-0000

07-25-27-0000-0018-0000

Offering subject to errors, omission, prior sale or withdrawal without notice.

LAND FOR SALE

— Commercial Real Estate Investments | Management | Brokerage | Development | Land —

Maury L. Carter & Associates, Inc.  
407-422-3144 | [www.maurycarter.com](http://www.maurycarter.com)





# FOUR CORNERS AREA PROPERTY

7.93± acres

Osceola County, FL



PROPERTY MAP

— Commercial Real Estate Investments | Management | Brokerage | Development | Land —

Maury L. Carter & Associates, Inc.  
407-422-3144 | [www.maurycarter.com](http://www.maurycarter.com)





7.93± acres  
Osceola County, FL



Maury L. Carter & Associates, Inc.  
407-422-3144 | [www.maurycarter.com](http://www.maurycarter.com)

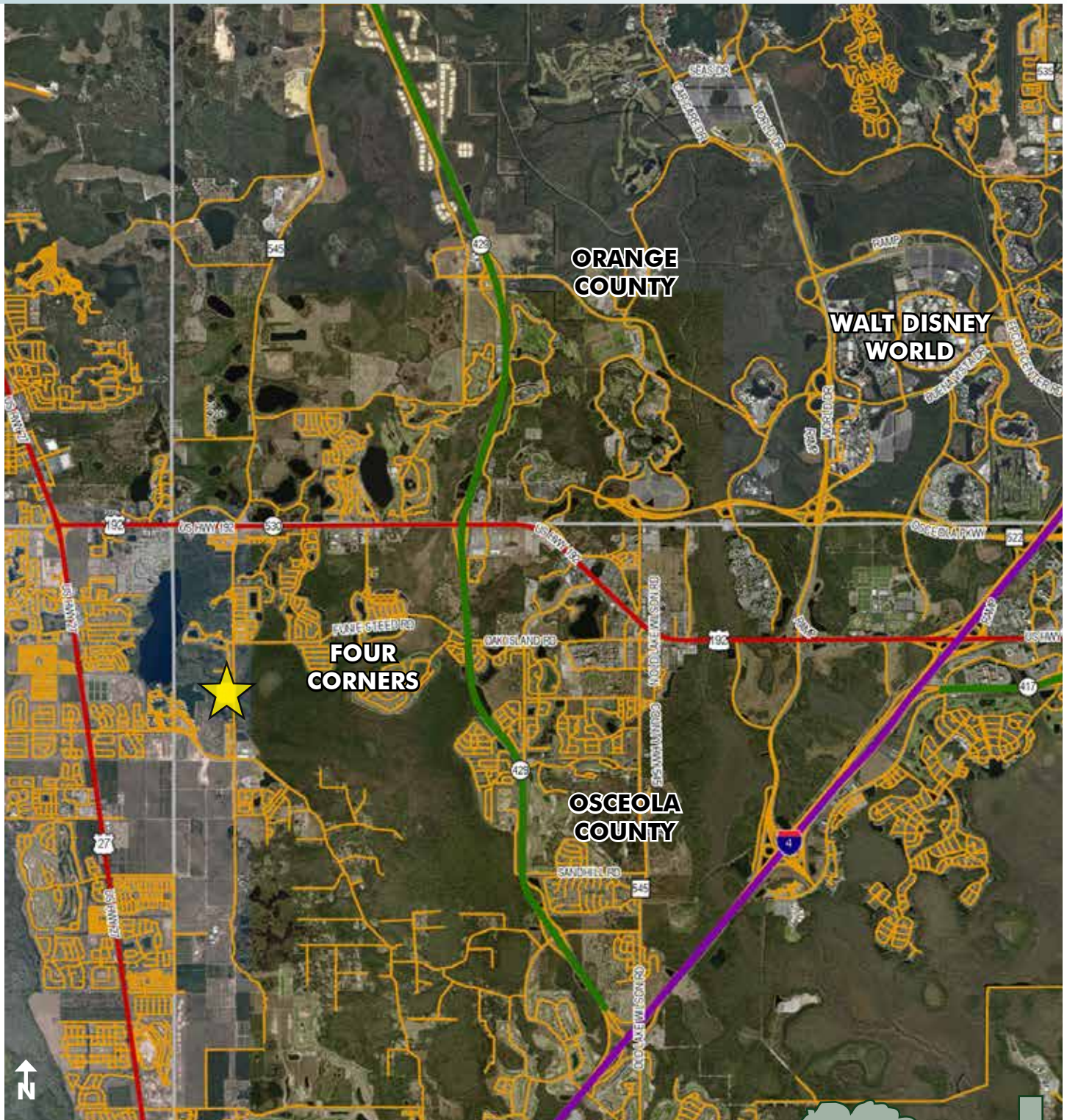




# FOUR CORNERS AREA PROPERTY

7.93± acres

Osceola County, FL



LOCATION MAP

— Commercial Real Estate Investments | Management | Brokerage | Development | Land

Maury L. Carter & Associates, Inc.

407-422-3144 | [www.maurycarter.com](http://www.maurycarter.com)

