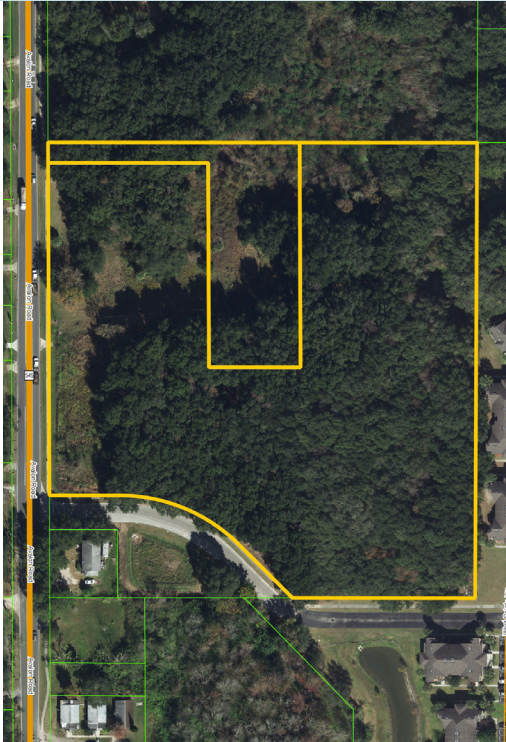


WINTER GARDEN RESIDENTIAL

8.73± gross acres (8± net acres)

Winter Garden, Orange County, FL



LOCATION

Located on the east side of Avalon Road (CR 545), just south of SR 50 and north of Florida's Turnpike in the Winter Garden area of Orange County. The property is 3 miles west of the SR 429 beltway interchange, providing direct access to Central Florida's major employment centers. The property is also located 2 miles NW of the Fowlers Grove shopping district and 1.5 miles SW of historic downtown Winter Garden.

SIZE

8.73± gross acres (8± net acres)

PRICE

\$2,200,000

ZONING

R-1A/Low Density Residential; site has potential for townhome/multi-family development

ROAD FRONTAGE

520'± along the east side of Avalon Road (CR 545)

UTILITIES

City of Winter Garden

DESCRIPTION

Middle and high school zoned for the area are B rated schools. Zoned Elementary school holds a C rating.

Offering subject to errors, omission, prior sale or withdrawal without notice.

LAND FOR SALE

— Commercial Real Estate Investments | Management | Brokerage | Development | Land

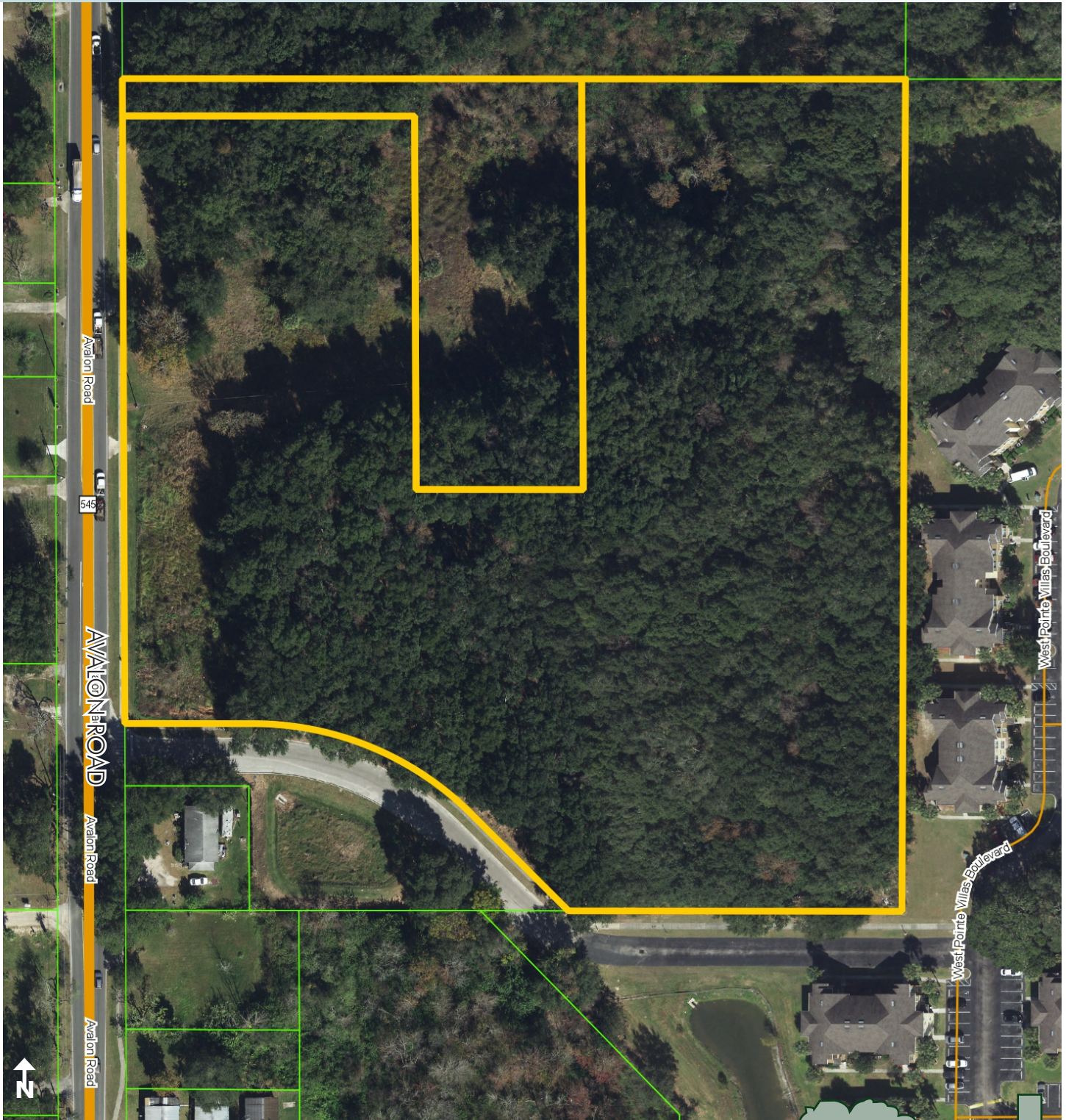
Maury L. Carter & Associates, Inc.
407-422-3144 | www.maurycarter.com



WINTER GARDEN RESIDENTIAL

8.73± gross acres (8± net acres)

Winter Garden, Orange County, FL



PROPERTY MAP

— Commercial Real Estate Investments | Management | Brokerage | Development | Land

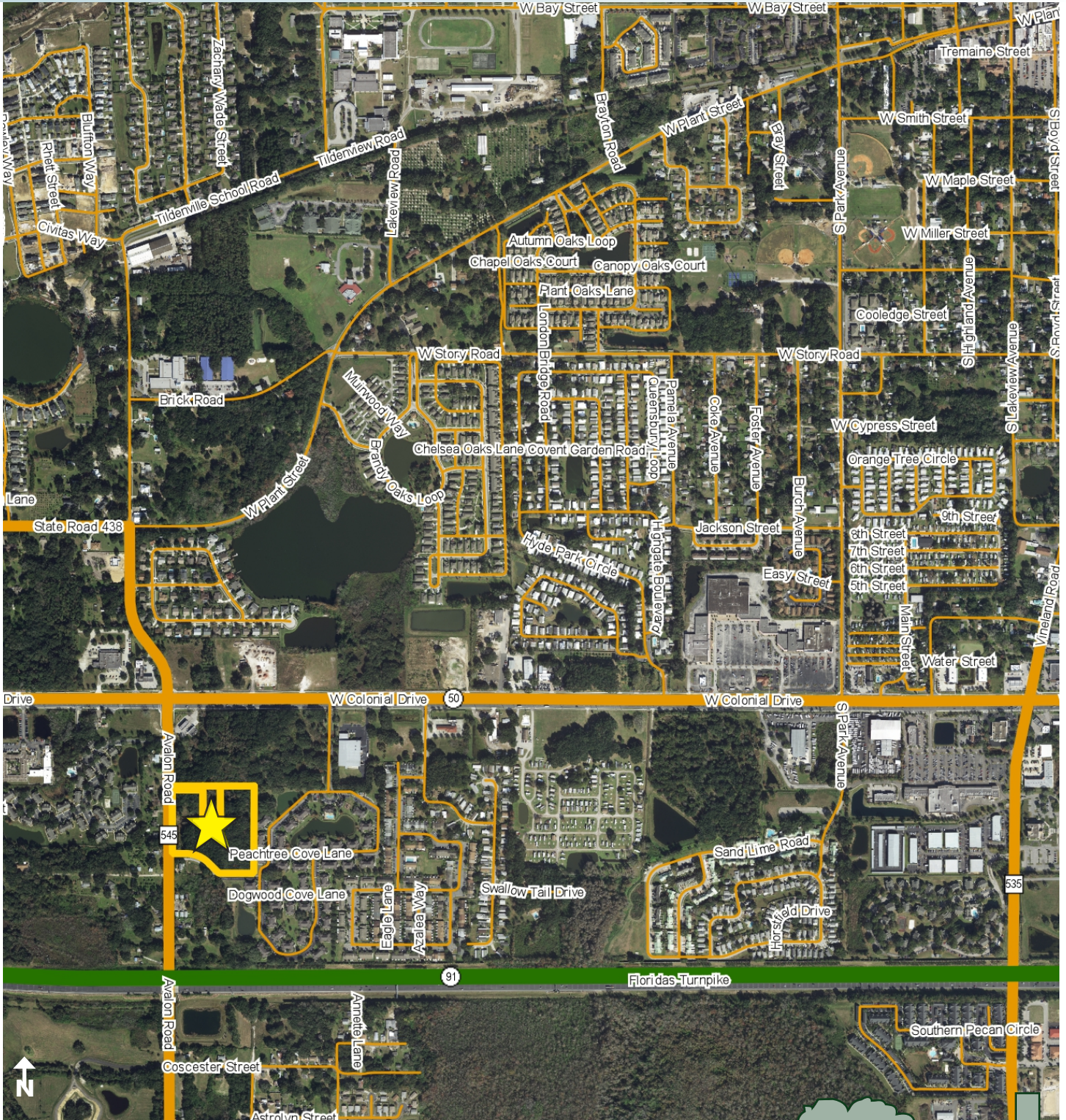
Maury L. Carter & Associates, Inc.
407-422-3144 | www.maurycarter.com



WINTER GARDEN RESIDENTIAL

8.73± gross acres (8± net acres)

Winter Garden, Orange County, FL



REGIONAL MAP

— Commercial Real Estate Investments | Management | Brokerage | Development | Land

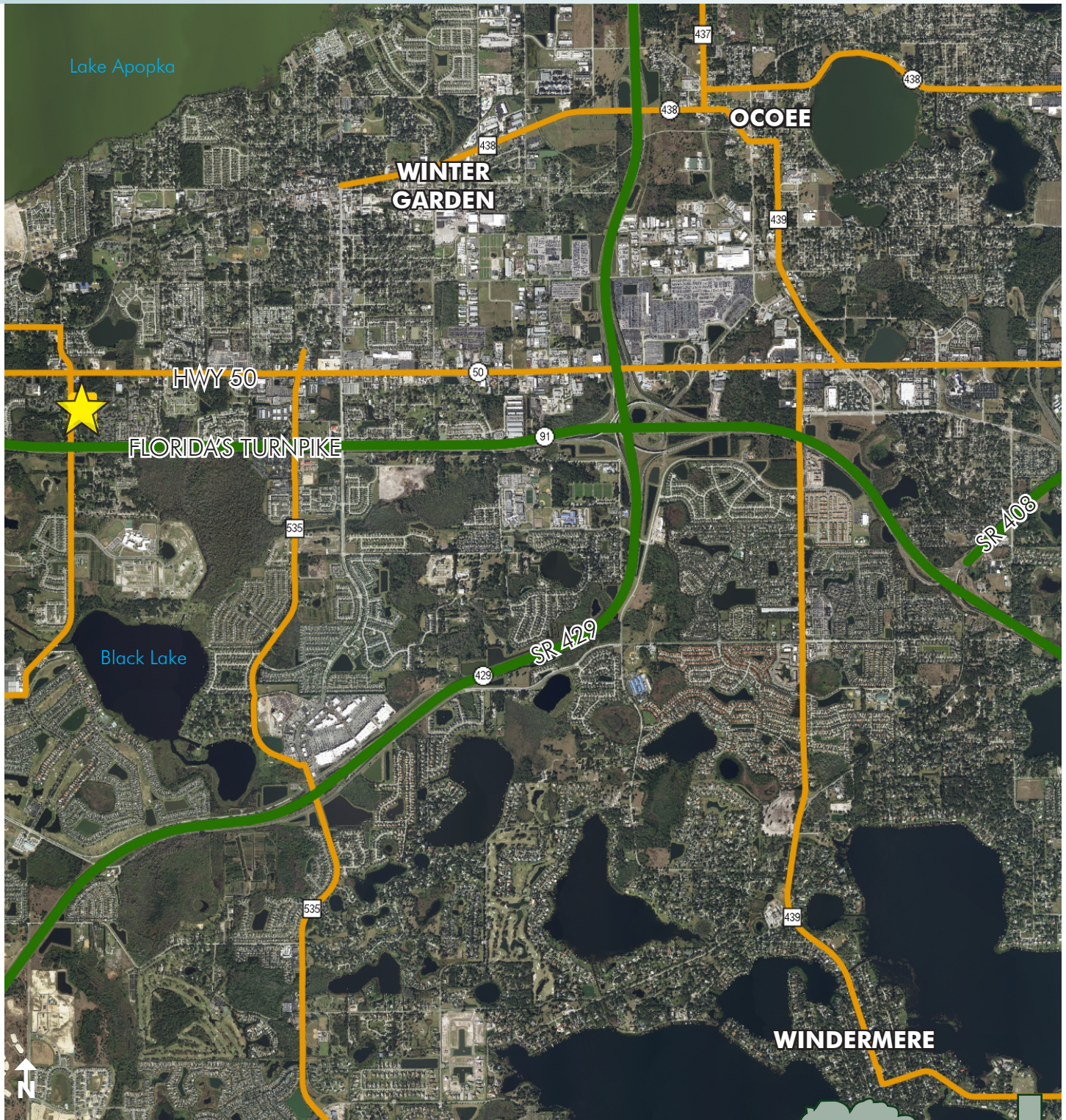
Maury L. Carter & Associates, Inc.
407-422-3144 | www.maurycarter.com



WINTER GARDEN RESIDENTIAL

8.73± gross acres (8± net acres)

Winter Garden, Orange County, FL



LOCATION MAP

— Commercial Real Estate Investments | Management | Brokerage | Development | Land

Maury L. Carter & Associates, Inc.
407-422-3144 | www.maurycarter.com

