

PRIME DEVELOPMENT LAND CITY OF KISSIMMEE

56± acres • Osceola County, FL

**UNDER
CONTRACT**

LAND FOR SALE



LOCATION/DESCRIPTION

Development opportunities on Pleasant Hill Road that borders Shingle Creek and the City of Kissimmee's Lancaster Regional Park. Property offers tremendous potential with over 650' of frontage on Shingle Creek and convenient to shopping and John Young Parkway. Potential for recreational use on Shingle Creek and access to Lancaster Regional Park and Shingle Creek Regional Trail.

This is one of the finest tracts available in the Kissimmee area. Within close proximity to major roadways, Downtown Orlando, the tourist corridor, and the Lake Nona/Medical City/Orlando Int'l Airport Area. Widening of Pleasant Hill Road is underway and will provide safe access to the property.

SIZE

55.67± acres

PRICE

\$5,700,000

ZONING

Low Density Residential – up to 8 units/acre

FRONTAGE

1,500'± on Pleasant Hill Road

650'± on Shingle Creek

Offering subject to errors, omission, prior sale or withdrawal without notice.

— Commercial Real Estate Investments | Management | Brokerage | Development | Land

Maury L. Carter & Associates, Inc.
407-422-3144 | www.maurycarter.com



PRIME DEVELOPMENT LAND CITY OF KISSIMMEE

56± acres • Osceola County, FL

**UNDER
CONTRACT**



PROPERTY MAP

— Commercial Real Estate Investments | Management | Brokerage | Development | Land

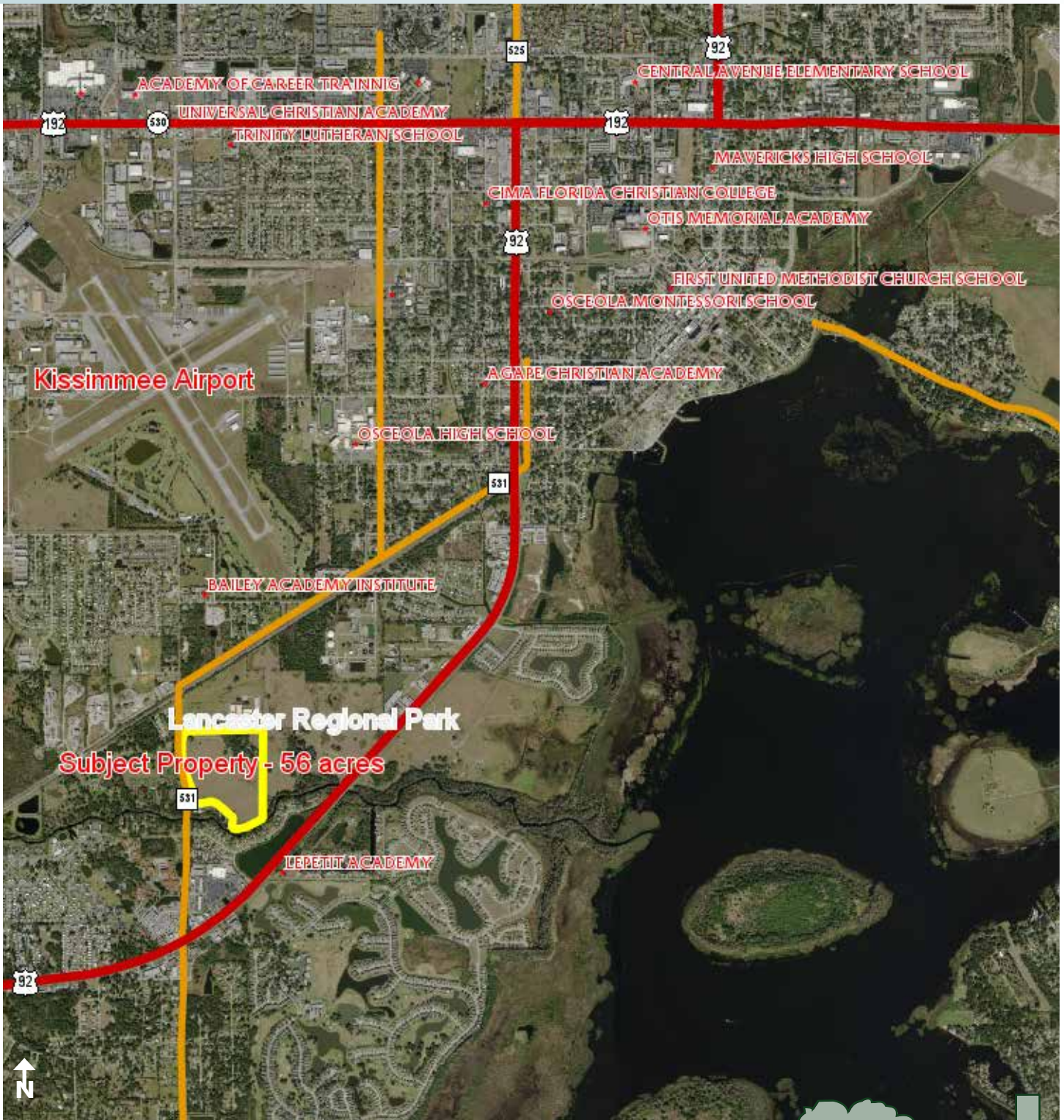
Maury L. Carter & Associates, Inc.
407-422-3144 | www.maurycarter.com



PRIME DEVELOPMENT LAND CITY OF KISSIMMEE

56± acres • Osceola County, FL

**UNDER
CONTRACT**



REGIONAL MAP

— Commercial Real Estate Investments | Management | Brokerage | Development | Land

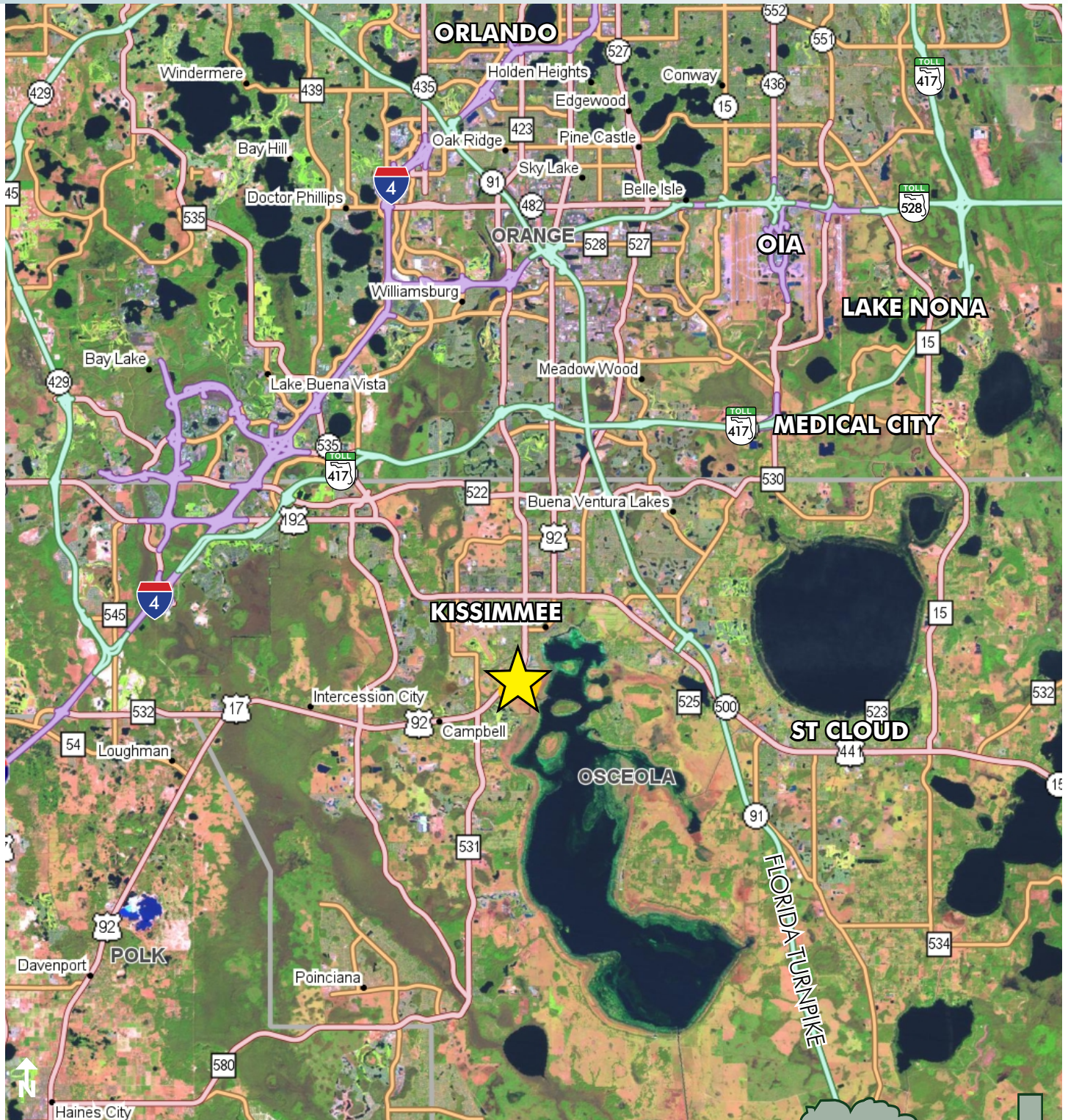
Maury L. Carter & Associates, Inc.
407-422-3144 | www.maurycarter.com



PRIME DEVELOPMENT LAND CITY OF KISSIMMEE

56± acres • Osceola County, FL

**UNDER
CONTRACT**



LOCATION MAP

— Commercial Real Estate Investments | Management | Brokerage | Development | Land

Maury L. Carter & Associates, Inc.
407-422-3144 | www.maurycarter.com

