

PRIME DEVELOPMENT LAND

OSCEOLA COUNTY, 102± acres

St. Cloud, FL

**UNDER
CONTRACT**

LAND FOR SALE



LOCATION

Located between St. Cloud and Harmony on Hwy 192-441

SIZE

102± acres

PRICE

\$3,500,000

ZONING

Mixed Use

ROAD FRONTAGE

2000' ± frontage on Hwy 192

UTILITIES

Off site utility information is available.

DESCRIPTION

Prime development property priced to sell. This property is high and dry with great potential for a mixed use development. Located conveniently between St. Cloud and Harmony with Orlando Int'l. Airport, beaches and theme parks all within a 30 minute drive.

Offering subject to errors, omission, prior sale or withdrawal without notice.

— Commercial Real Estate Investments | Management | Brokerage | Development | Land

Maury L. Carter & Associates, Inc.

407-422-3144 | www.maurycarter.com



PRIME DEVELOPMENT LAND

OSCEOLA COUNTY, 102± acres

St. Cloud, FL

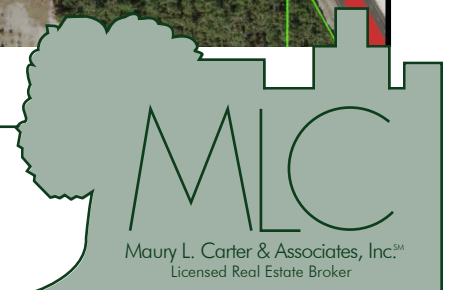
**UNDER
CONTRACT**



PROPERTY MAP

— Commercial Real Estate Investments | Management | Brokerage | Development | Land

Maury L. Carter & Associates, Inc.
407-422-3144 | www.maurycarter.com

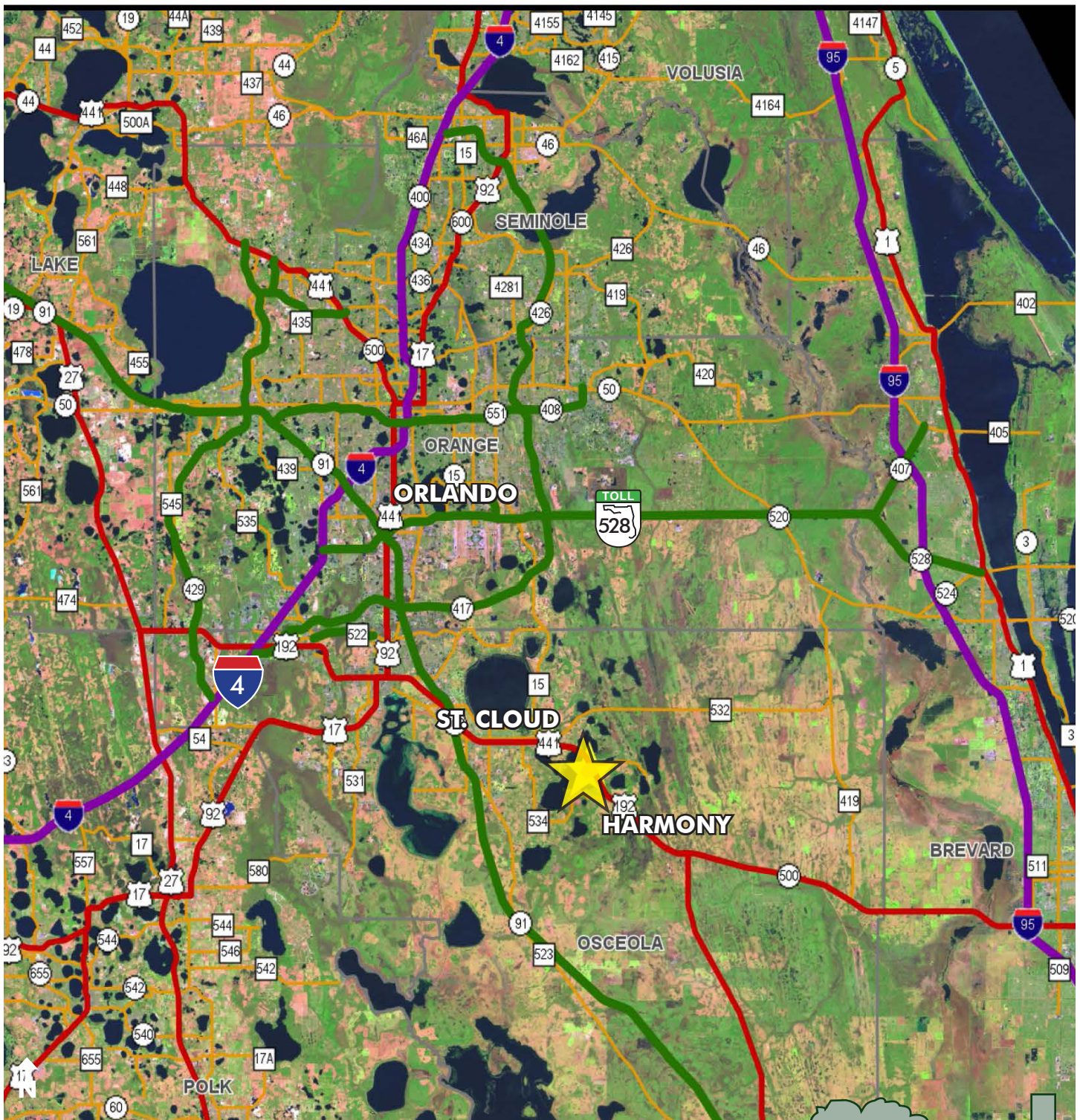


PRIME DEVELOPMENT LAND

OSCEOLA COUNTY, 102± acres

St. Cloud, FL

**UNDER
CONTRACT**



LOCATION MAP

— Commercial Real Estate Investments | Management | Brokerage | Development | Land

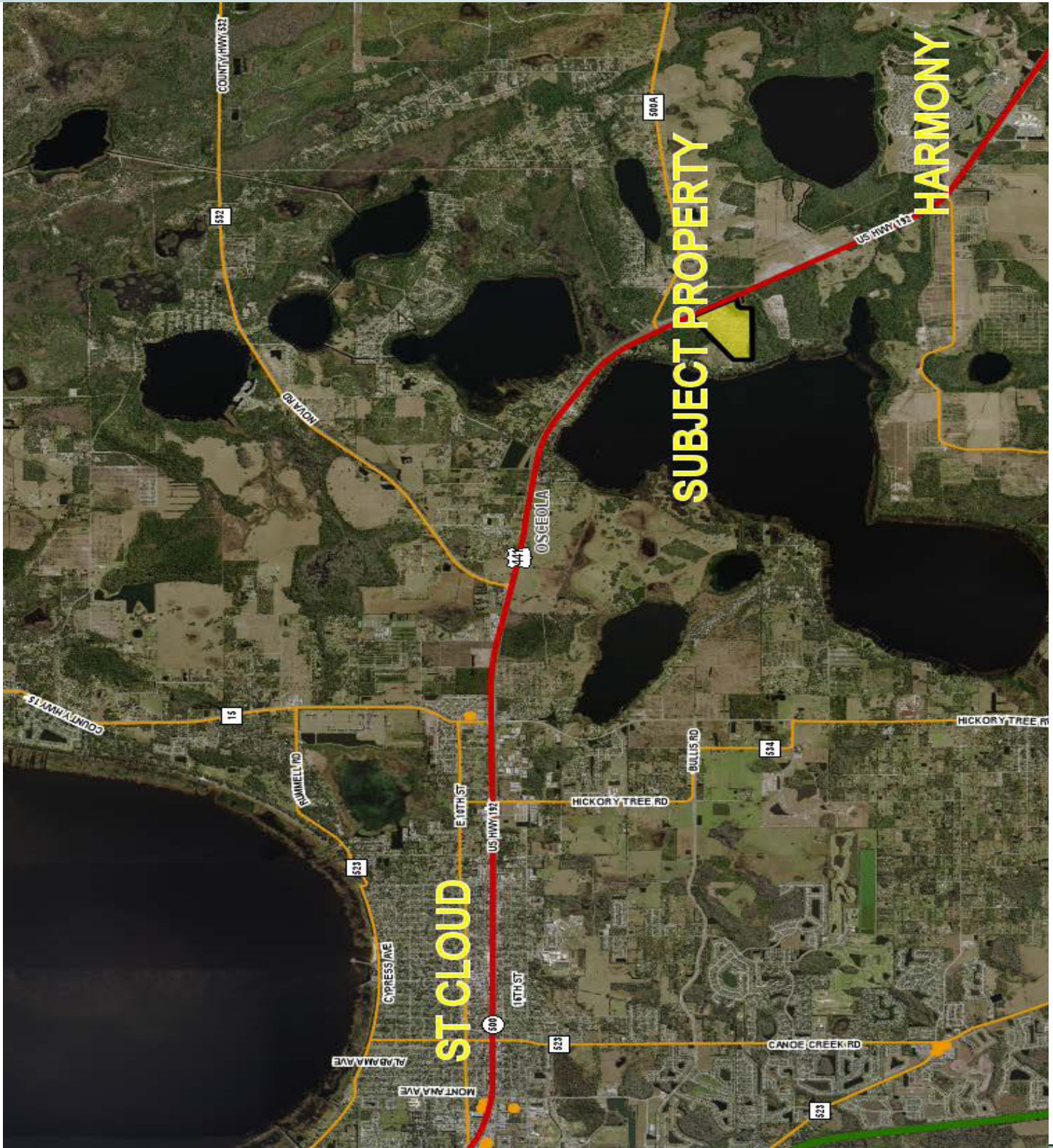
Maury L. Carter & Associates, Inc.
407-422-3144 | www.maurycarter.com



PRIME DEVELOPMENT LAND

OSCEOLA COUNTY, 102± acres
St. Cloud, FL

**UNDER
CONTRACT**



— Commercial Real Estate Investments | Management | Brokerage | Development | Land

Maury L. Carter & Associates, Inc.
407-422-3144 | www.maurycarter.com

