

KISSIMMEE INFILL PROPERTY

PRIME LOCATION

4.55± acres • Osceola County, FL



LOCATION/DESCRIPTION

Great infill property located in the heart of growth in Kissimmee, Florida! Located just behind Medieval Times and surrounded by single- and multi-family housing developments. Just minutes to Walt Disney World, Sea World and Universal Studios. Close to I-4 and SR 429 for easy access to Orlando and the beaches alike. This property offers tremendous opportunities and is one of the few infill properties left this close to the attractions.

SIZE

4.55± acres

PRICE

\$875,000

ZONING/FLU

Low Density Residential

ROAD FRONTAGE

Roma Way - 1/4 mile to Irlo Bronson Memorial Hwy (Hwy 192)

UTILITIES

Located at the property. Electric is serviced by Kissimmee Utility Authority. Water/sewer provided by Toho Water Authority.

Offering subject to errors, omission, prior sale or withdrawal without notice.

LAND FOR SALE

— Commercial Real Estate Investments | Management | Brokerage | Development | Land —

Maury L. Carter & Associates, Inc.

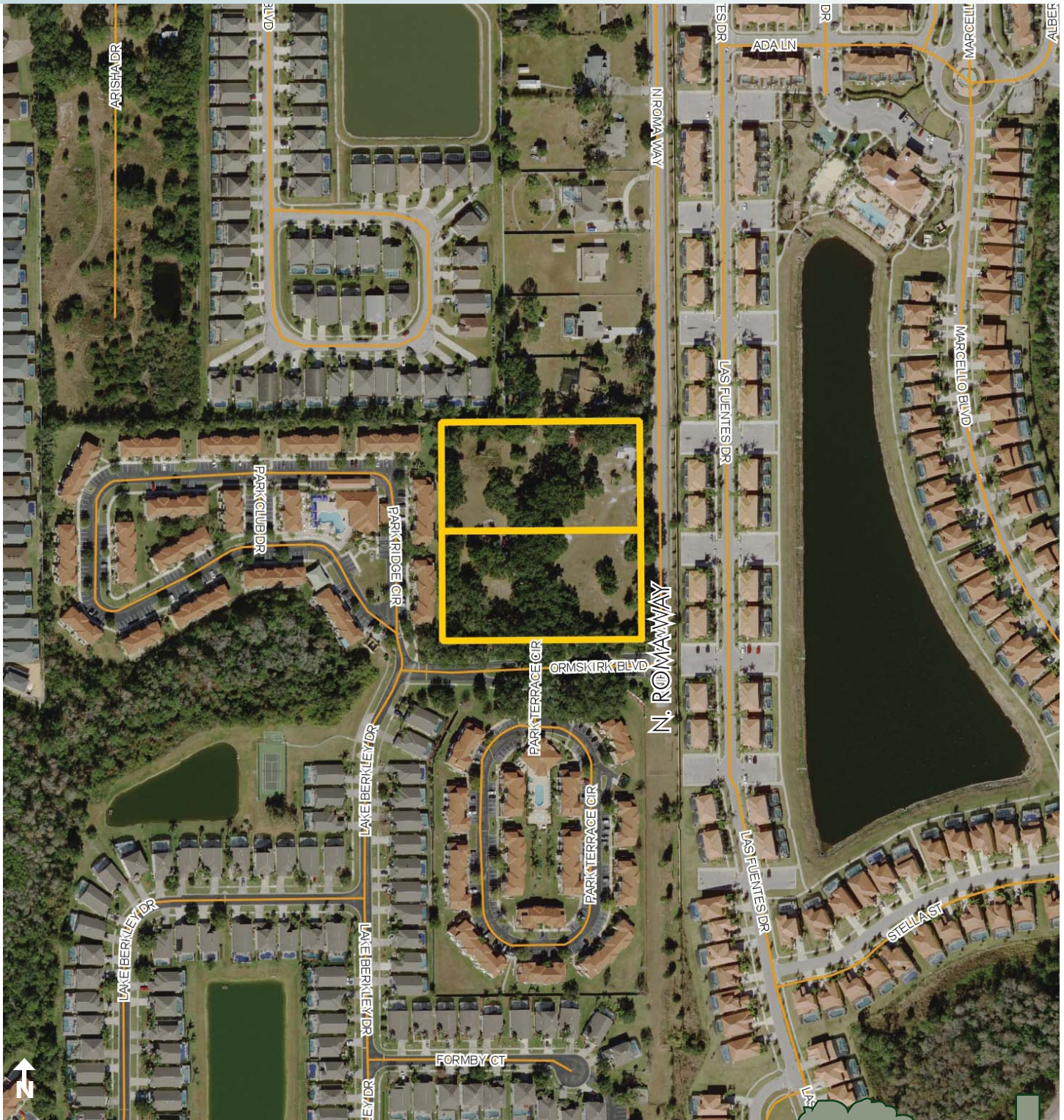
407-422-3144 | www.maurycarter.com



KISSIMMEE INFILL PROPERTY

PRIME LOCATION

4.55± acres • Osceola County, FL



PROPERTY MAP

— Commercial Real Estate Investments | Management | Brokerage | Development | Land

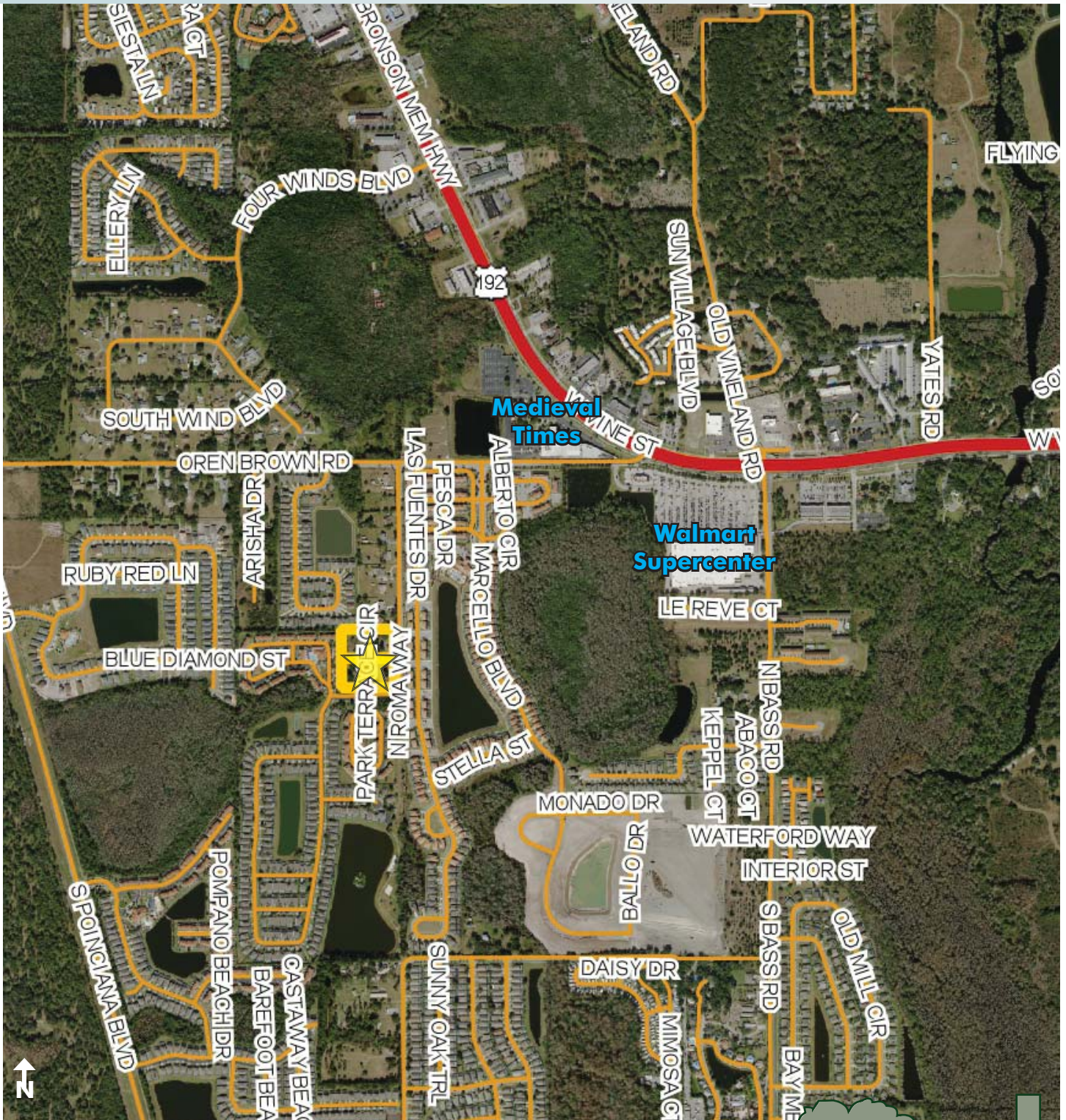
Maury L. Carter & Associates, Inc.
407-422-3144 | www.maurycarter.com



KISSIMMEE INFILL PROPERTY

PRIME LOCATION

4.55± acres • Osceola County, FL



REGIONAL MAP

— Commercial Real Estate Investments | Management | Brokerage | Development | Land

Maury L. Carter & Associates, Inc.

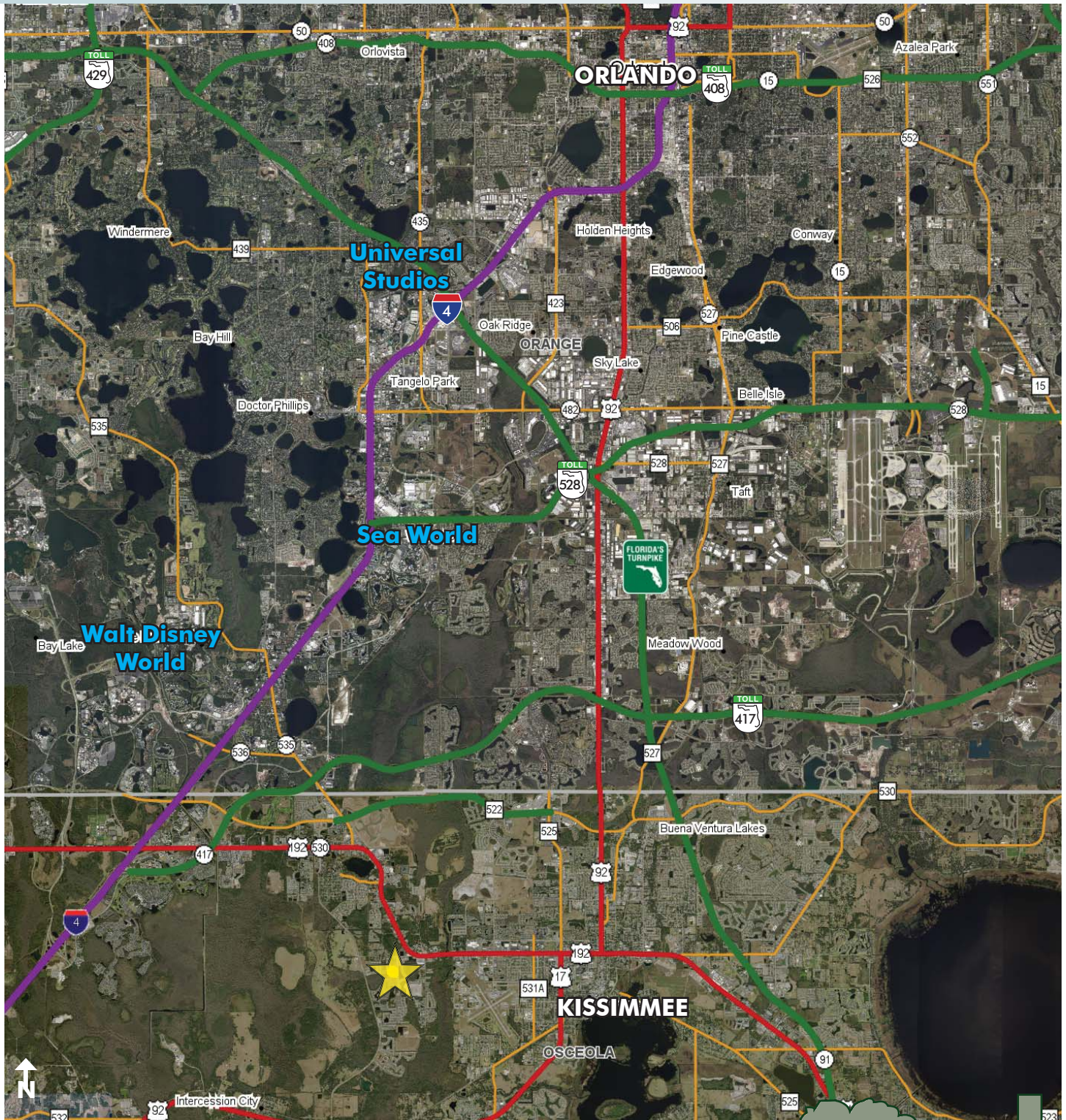
407-422-3144 | www.maurycarter.com



KISSIMMEE INFILL PROPERTY

PRIME LOCATION

4.55± acres • Osceola County, FL



LOCATION MAP

— Commercial Real Estate Investments | Management | Brokerage | Development | Land

Maury L. Carter & Associates, Inc.
407-422-3144 | www.maurycarter.com

