

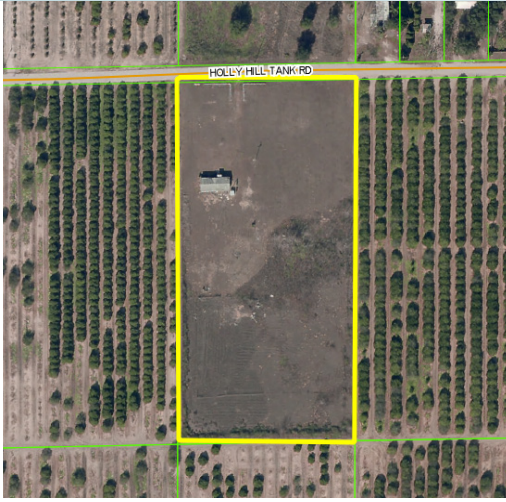
RESIDENTIAL/COMMERCIAL LAND

4.95± acres

Polk County, FL

**PRICE
REDUCED**

LAND FOR SALE



LOCATION

2527 Holly Hill Tank Road, Davenport, FL. 33837
Just off of Hwy 27 and close to I-4.

SIZE

4.95± acres

PRICE

NOW: \$399,000 - Owner Financing Available

~~WAS: \$475,000~~

ZONING/FLU

RL - 1

ROAD FRONTAGE

330' on Holly Hill Tank Road

1300' from Hwy 27

UTILITIES

Well and septic on site.

DESCRIPTION

4.95± acres with mobile home. Nice residential tract close to Hwy 27 and I-4. Potential to rezone for storage units or warehouse.

Offering subject to errors, omission, prior sale or withdrawal without notice.



— Commercial Real Estate Investments | Management | Brokerage | Development | Land

Maury L. Carter & Associates, Inc.

407-422-3144 | www.maurycarter.com



Maury L. Carter & Associates, Inc.SM
Licensed Real Estate Broker

RESIDENTIAL/COMMERCIAL LAND

4.95± acres

Polk County, FL

**PRICE
REDUCED**



PROPERTY MAP

— Commercial Real Estate Investments | Management | Brokerage | Development | Land

Maury L. Carter & Associates, Inc.
407-422-3144 | www.maurycarter.com

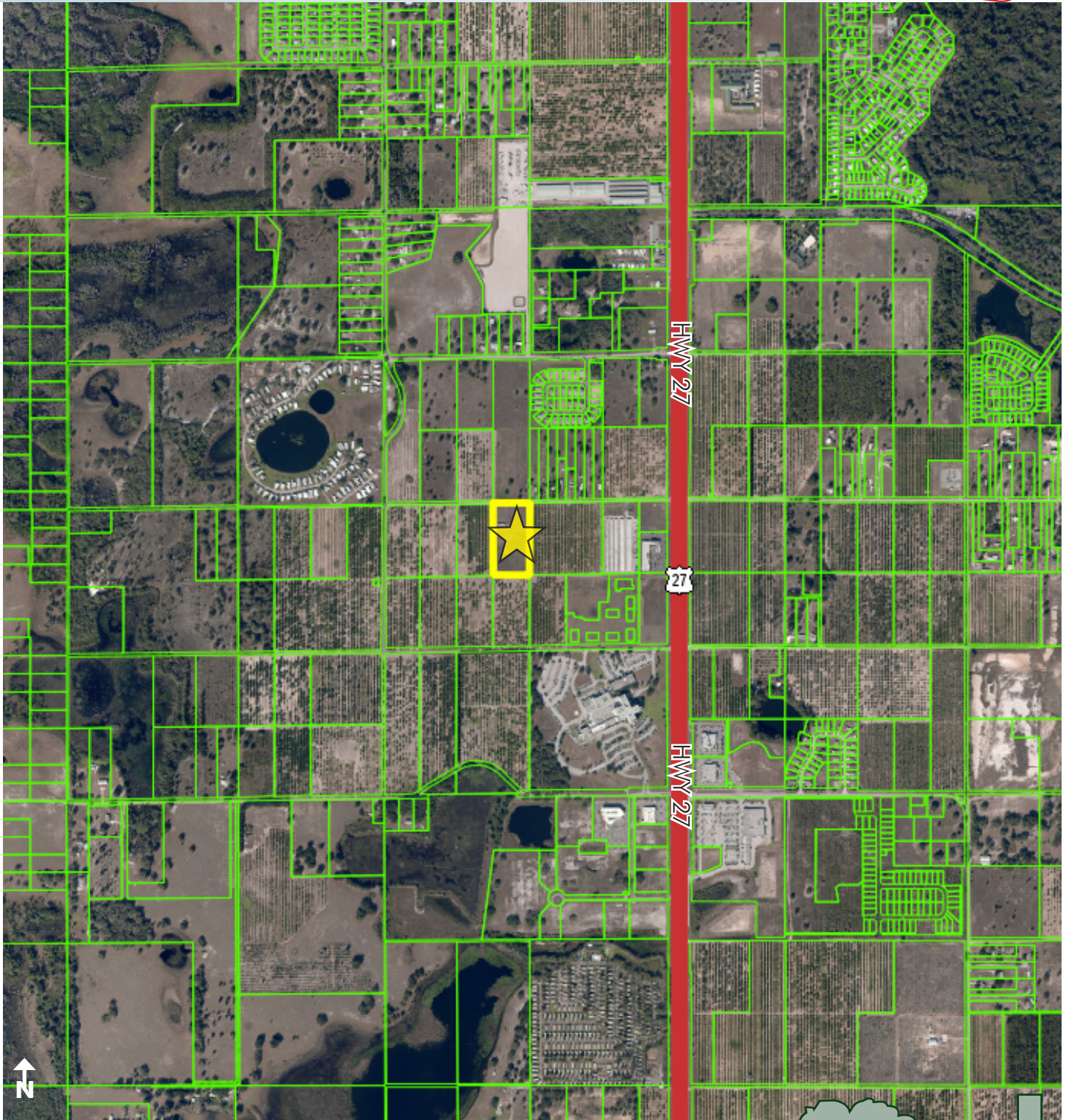


RESIDENTIAL/COMMERCIAL LAND

4.95± acres

Polk County, FL

**PRICE
REDUCED**



REGIONAL MAP

— Commercial Real Estate Investments | Management | Brokerage | Development | Land

Maury L. Carter & Associates, Inc.
407-422-3144 | www.maurycarter.com

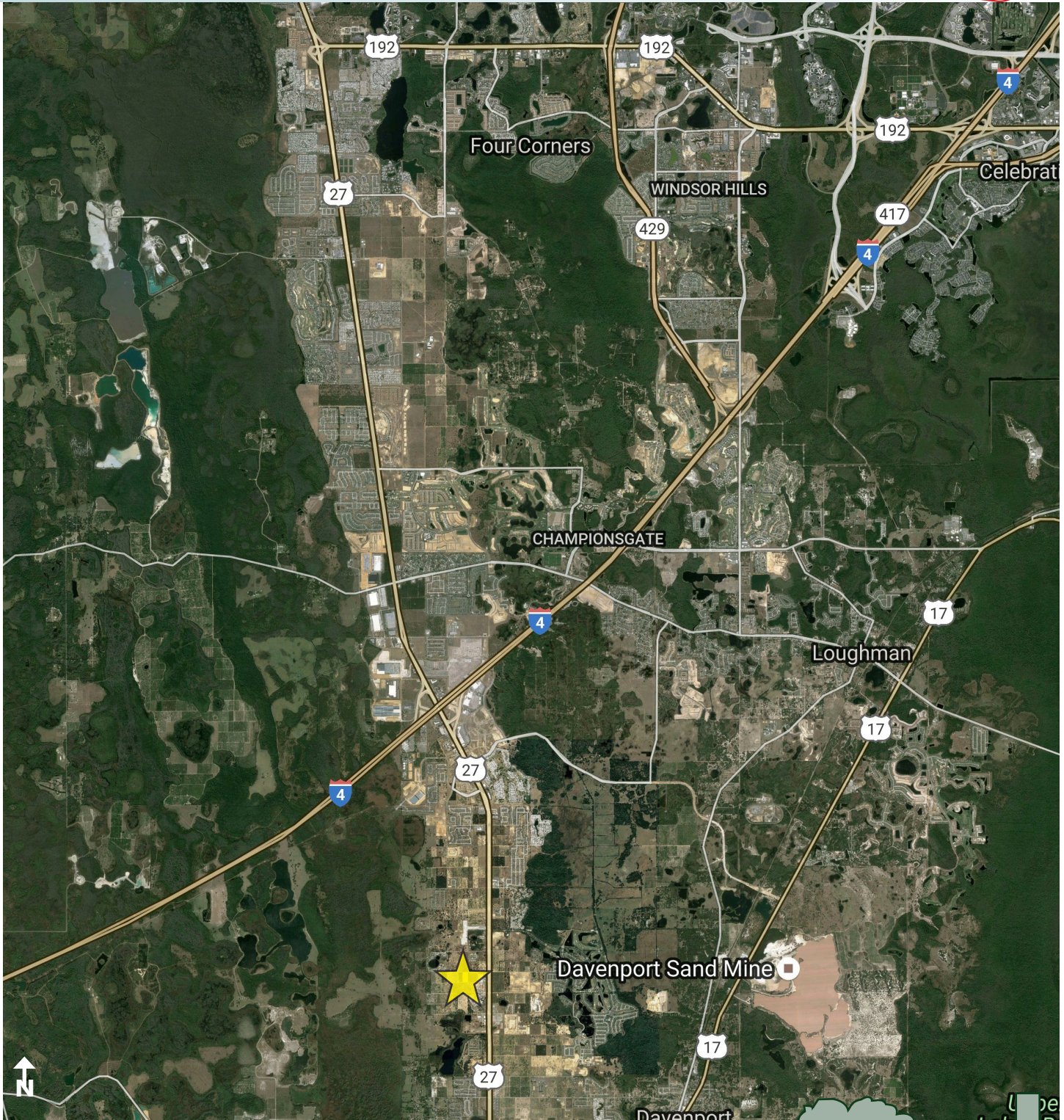


RESIDENTIAL/COMMERCIAL LAND

4.95± acres

Polk County, FL

**PRICE
REDUCED**



LOCATION MAP

— Commercial Real Estate Investments | Management | Brokerage | Development | Land

Maury L. Carter & Associates, Inc.
407-422-3144 | www.maurycarter.com

