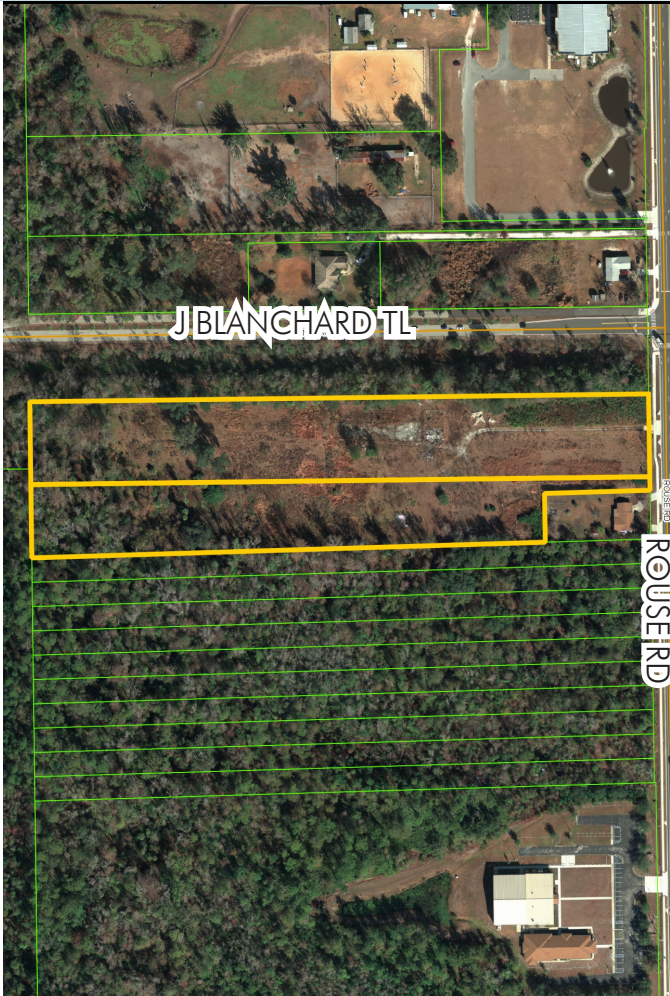


# RESIDENTIAL LAND ROUSE RD

8.58± acres (gross)  
Orlando, FL

**UNDER  
CONTRACT**

LAND FOR SALE



## LOCATION

Located at the southwest corner of Rouse Road and Jay Blanchard Trail.

## PARCEL IDs

16-22-31-8972-00-080  
16-22-31-8972-00-090

## SIZE

8.58± gross acres  
(7.32± net acres)

## PRICE

\$750,000

## ZONING/FLU

North 4.99± acres: R-2/ Low to medium Residential  
South 3.59± acres: R-1/ Low to medium Residential

## ROAD FRONTAGE

200± feet on west side of Rouse Road

## UTILITIES

Orange County Utilities

## DESCRIPTION

Irregularly shaped 8.58 acres. At present zoning allows 56 residential units, however FLU allows 73 units. Zoned for University High School (B), Union Park Middle School (C), and Riverdale Elementary (A).

Offering subject to errors, omission, prior sale or withdrawal without notice.

— Commercial Real Estate Investments | Management | Brokerage | Development | Land

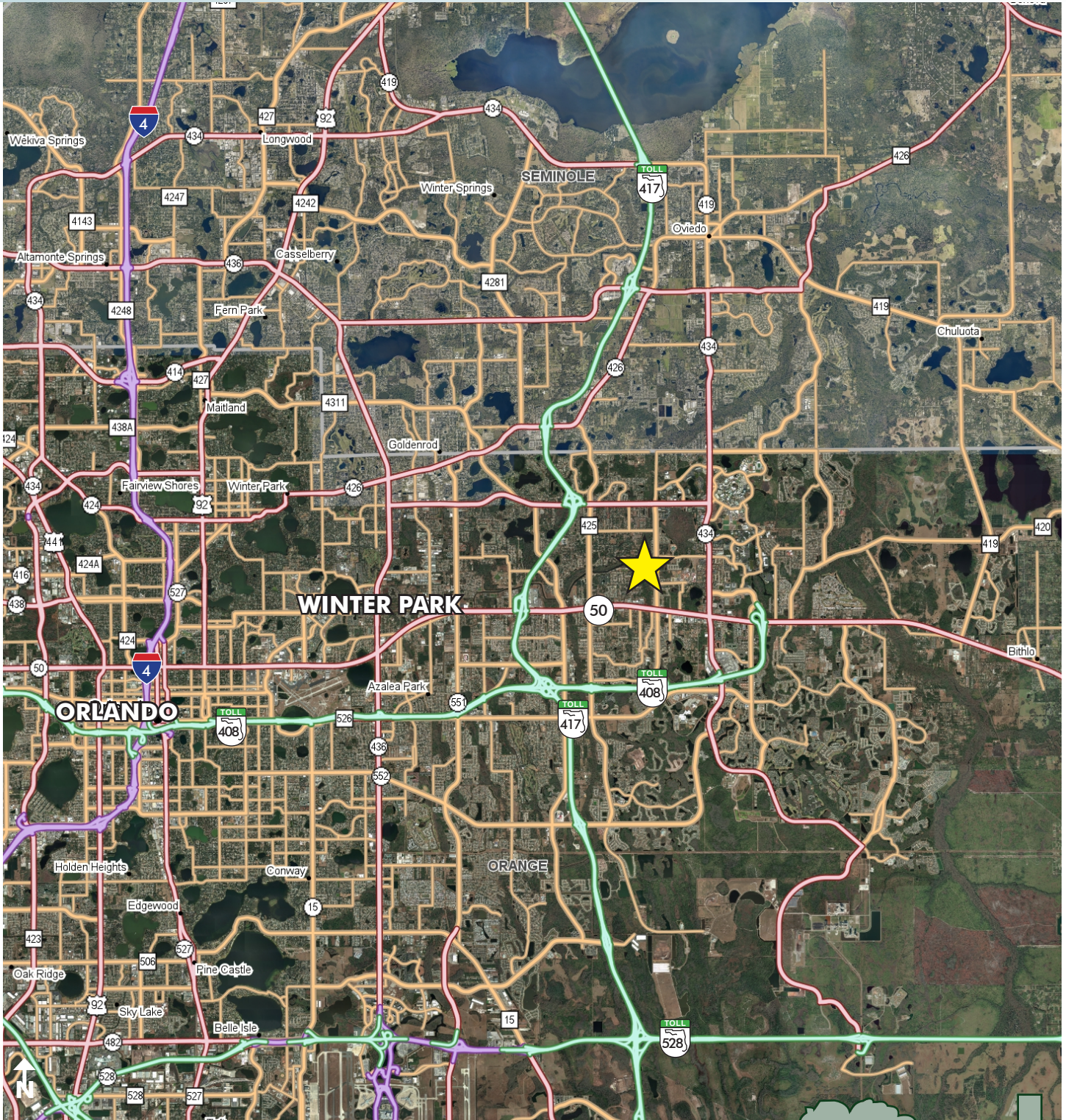
Maury L. Carter & Associates, Inc.  
407-422-3144 | [www.maurycarter.com](http://www.maurycarter.com)



# RESIDENTIAL LAND ROUSE RD

8.58± acres (gross)  
Orlando, FL

**UNDER  
CONTRACT**



LOCATION MAP

— Commercial Real Estate Investments | Management | Brokerage | Development | Land

Maury L. Carter & Associates, Inc.  
407-422-3144 | [www.maurycarter.com](http://www.maurycarter.com)

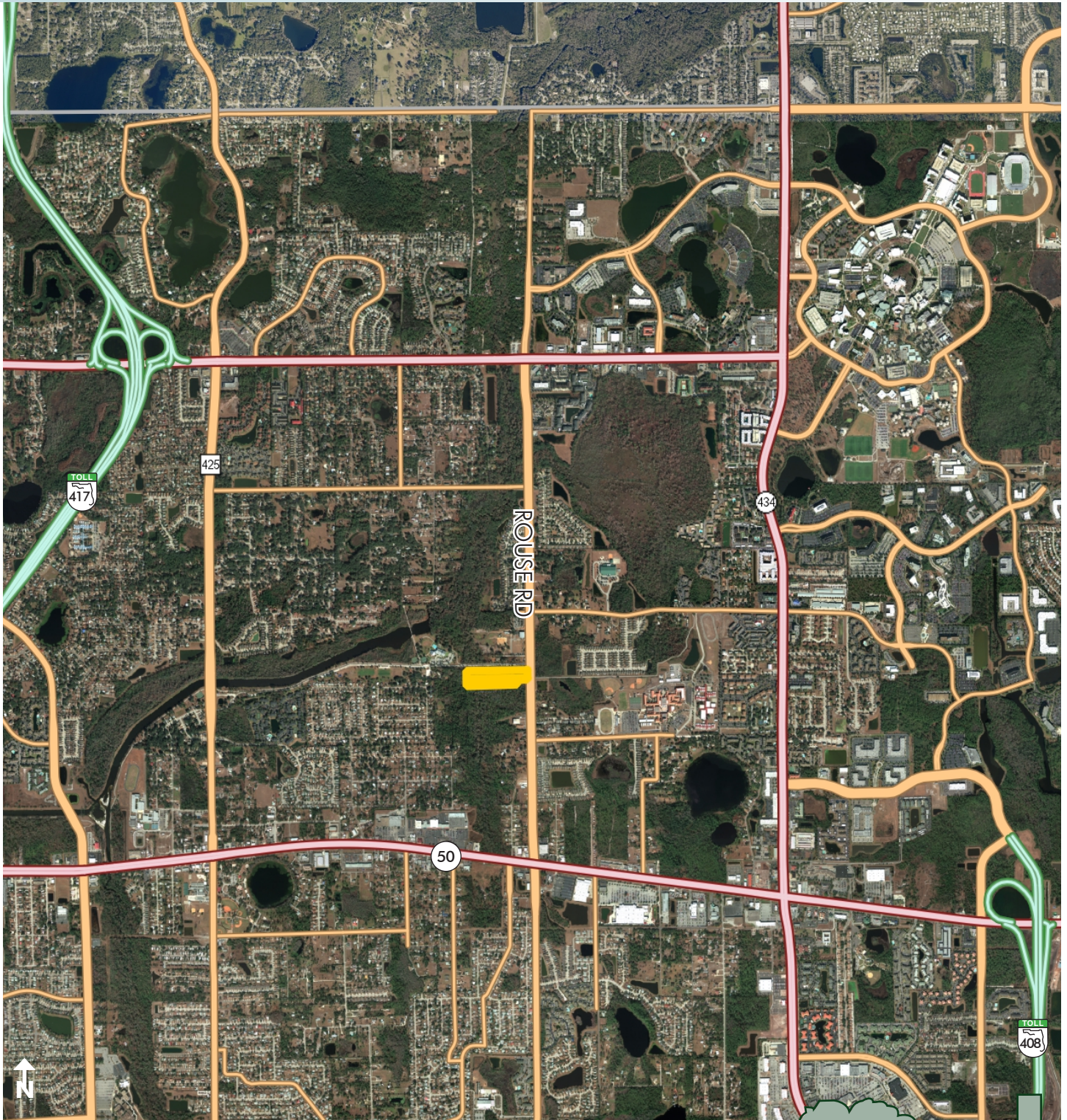


# RESIDENTIAL LAND ROUSE RD

8.58± acres (gross)

Orlando, FL

**UNDER  
CONTRACT**



REGIONAL MAP

— Commercial Real Estate Investments | Management | Brokerage | Development | Land

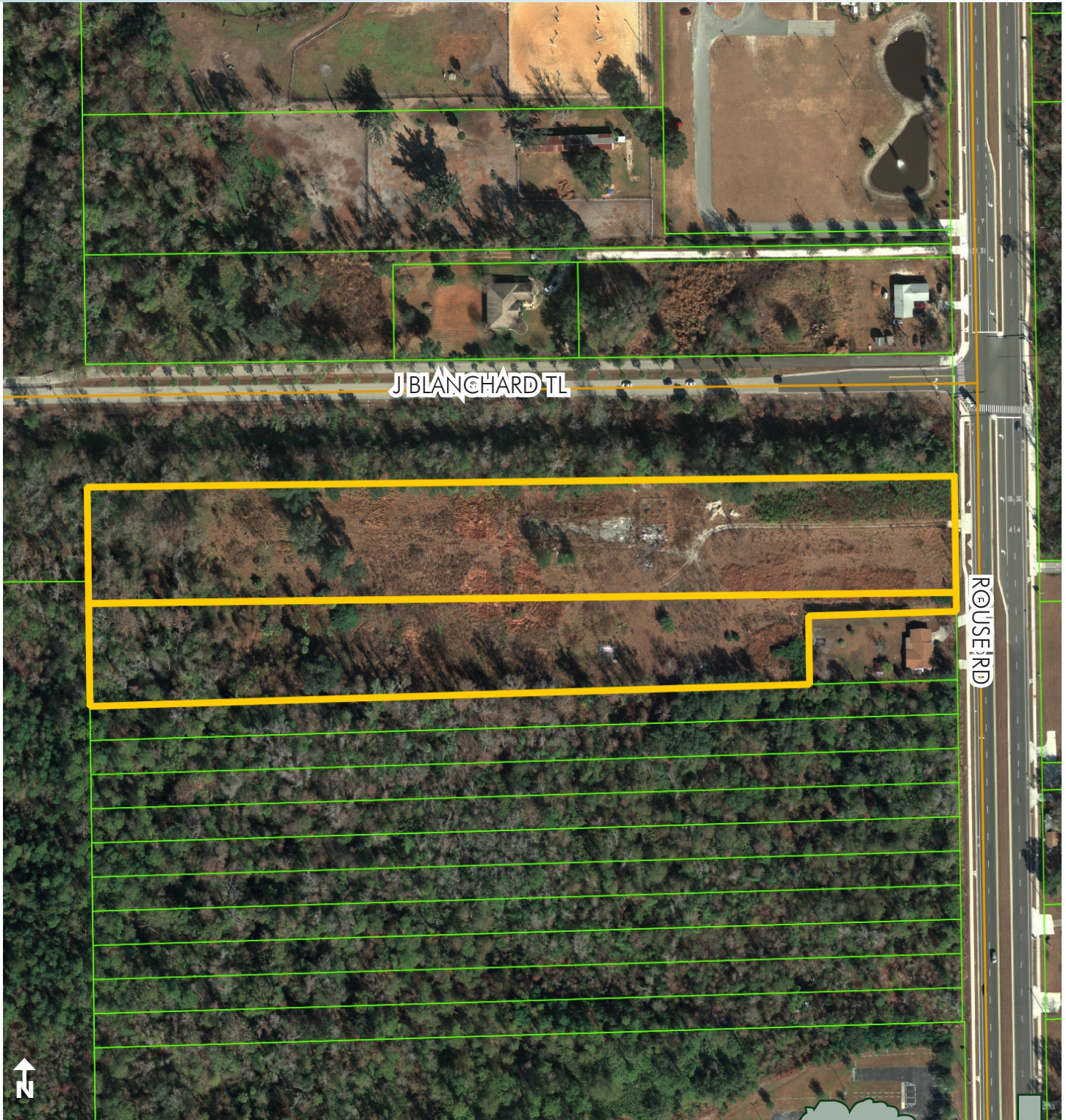
Maury L. Carter & Associates, Inc.  
407-422-3144 | [www.maurycarter.com](http://www.maurycarter.com)



# RESIDENTIAL LAND ROUSE RD

8.58± acres (gross)  
Orlando, FL

**UNDER  
CONTRACT**



PROPERTY MAP

— Commercial Real Estate Investments | Management | Brokerage | Development | Land

Maury L. Carter & Associates, Inc.  
407-422-3144 | [www.maurycarter.com](http://www.maurycarter.com)

