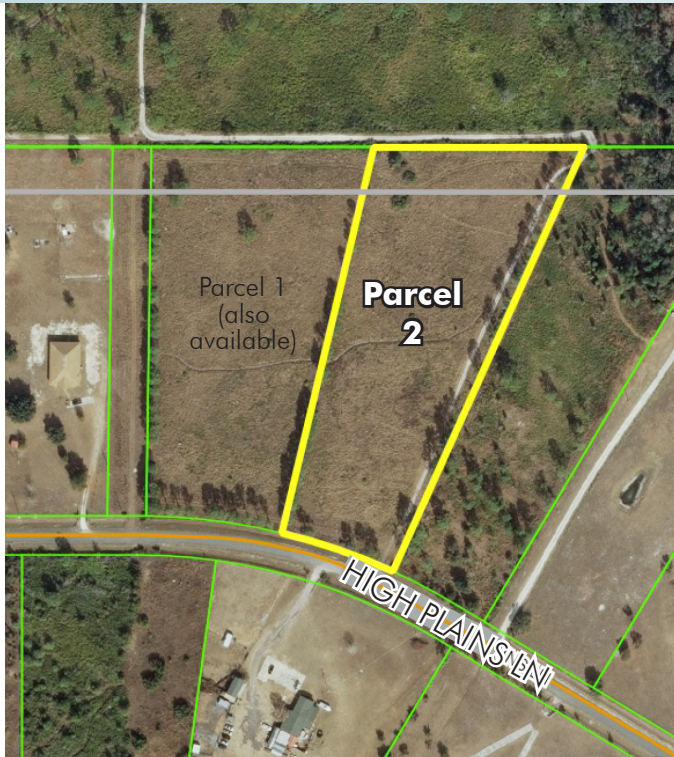


# MEDICAL CITY/LAKE NONA AREA

5± acres (Parcel 2)  
Osceola County, FL

**UNDER  
CONTRACT**

LAND FOR SALE



## LOCATION/DESCRIPTION

Good access to Medical City and Lake Nona area, just west of Boggy Creek Road in Osceola County. Property recently mowed and has southerly exposure on a hard surface road just off Boggy Creek Road. Adjoining lot also available.

## SIZE

5± acres

## PRICE

\$299,000

## ZONING

AC (1 du/acre). Horses permitted

## ROAD FRONTAGE

211'± on High Plains Lane

## PARCEL ID

01 25 30 3308 0001 0050

Offering subject to errors, omission, prior sale or withdrawal without notice.



— Commercial Real Estate Investments | Management | Brokerage | Development | Land —

**Maury L. Carter & Associates, Inc.**  
407-422-3144 | [www.maurycarter.com](http://www.maurycarter.com)

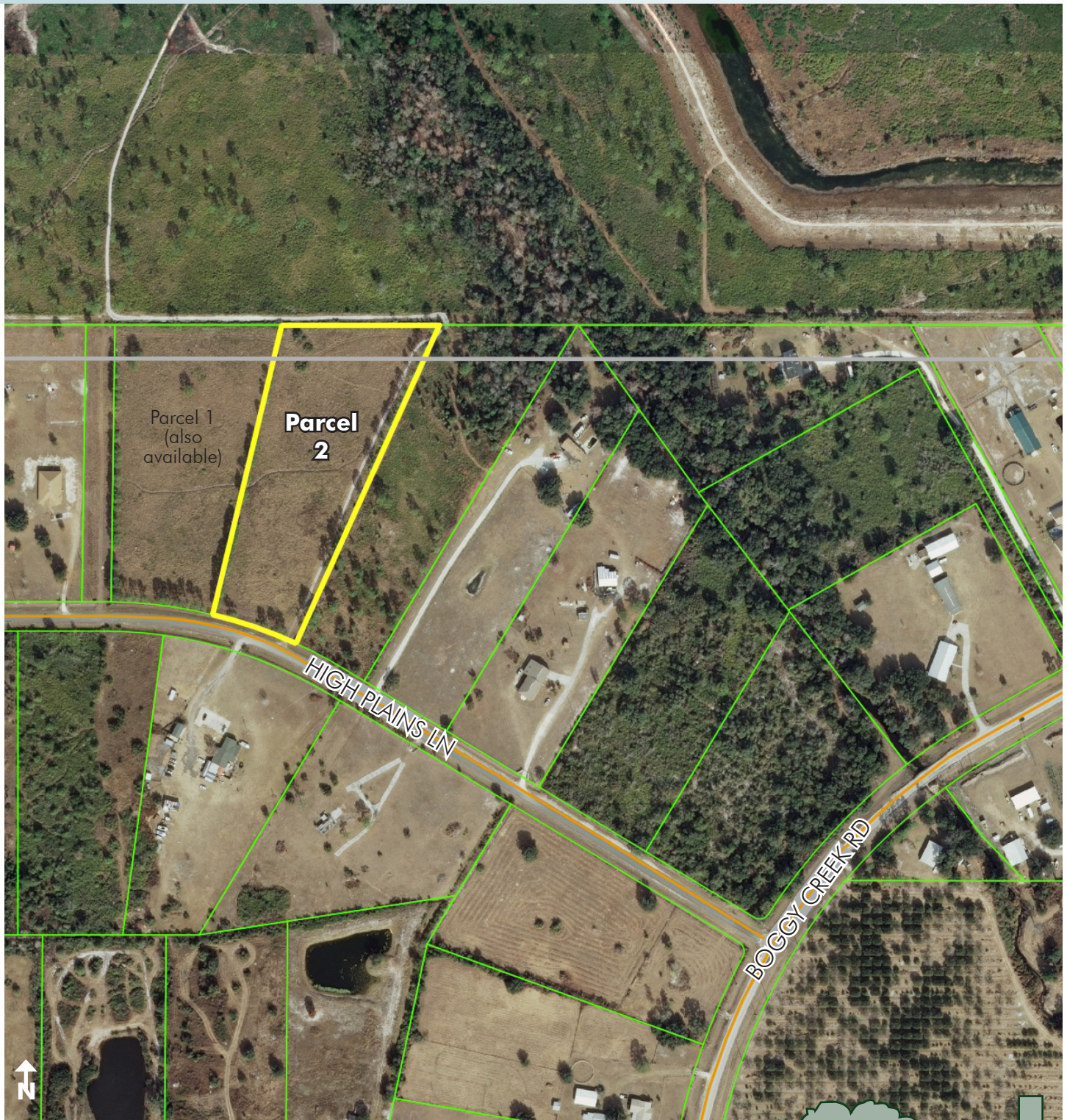




# MEDICAL CITY/LAKE NONA AREA

5± acres (Parcel 2)  
Osceola County, FL

**UNDER  
CONTRACT**



PROPERTY MAP

— Commercial Real Estate Investments | Management | Brokerage | Development | Land

Maury L. Carter & Associates, Inc.  
407-422-3144 | [www.maurycarter.com](http://www.maurycarter.com)

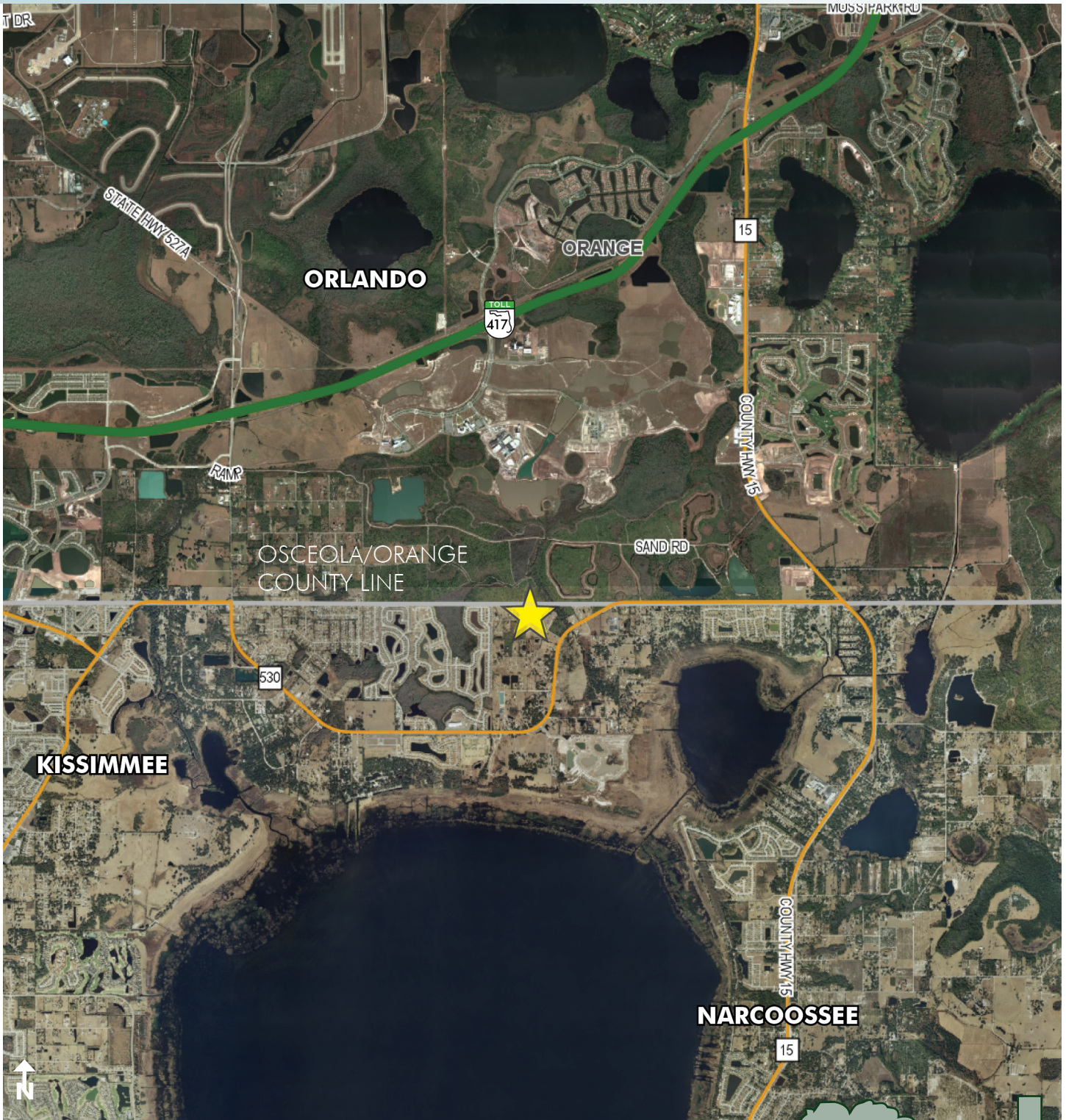




# MEDICAL CITY/LAKE NONA AREA

5± acres (Parcel 2)  
Osceola County, FL

**UNDER  
CONTRACT**



LOCATION MAP

— Commercial Real Estate Investments | Management | Brokerage | Development | Land

Maury L. Carter & Associates, Inc.  
407-422-3144 | [www.maurycarter.com](http://www.maurycarter.com)

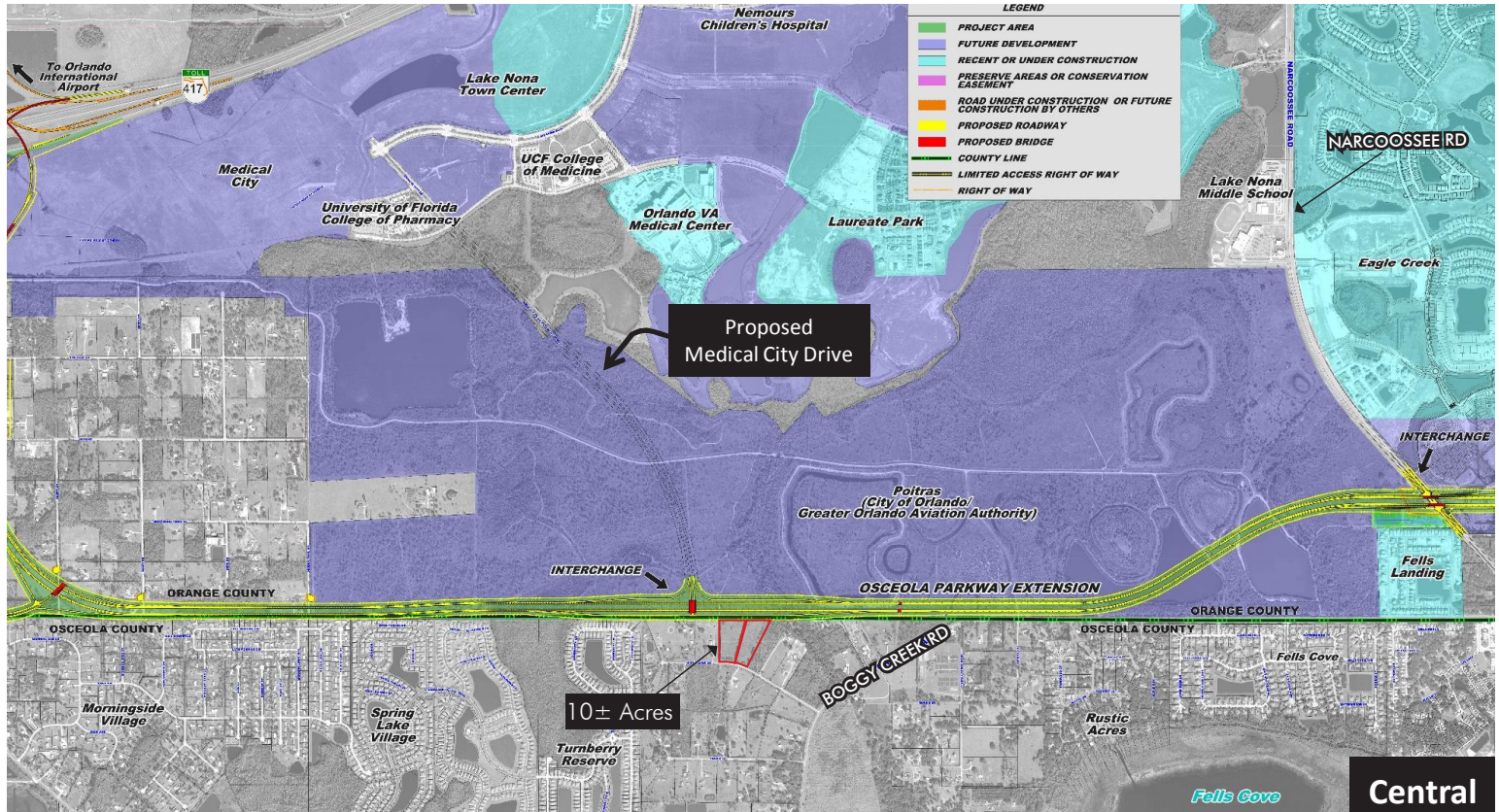




# MEDICAL CITY/LAKE NONA AREA

5± acres (Parcel 2)  
Osceola County, FL

**UNDER  
CONTRACT**



## OSCEOLA PARKWAY EXTENSION

— Commercial Real Estate Investments | Management | Brokerage | Development | Land

Maury L. Carter & Associates, Inc.  
407-422-3144 | [www.maurycarter.com](http://www.maurycarter.com)

