

LAKEFRONT RESIDENTIAL LAND

4.38± acres

Osceola County, FL



LOCATION/DESCRIPTION

Lakefront property in the shores of Lake Topokeliga in Kissimmee, Fl. This unique lakefront property holds dual value. Build your dream home with direct lake access or divide and develop. Property has a canal from the lake into the property that may be used to access the lake and keep your boat stored. Next to a large development tract that makes this property a prime location with many options. Structures would need to be refurbished or removed. Priced to sell. Deeded easement from Harbor Road for access to the property.

SIZE

4.38± acres

PRICE

\$600,000

FUTURE LAND USE

Low Density Residential - 3 to 8 units/acre

Offering subject to errors, omission, prior sale or withdrawal without notice.

— Commercial Real Estate Investments | Management | Brokerage | Development | Land

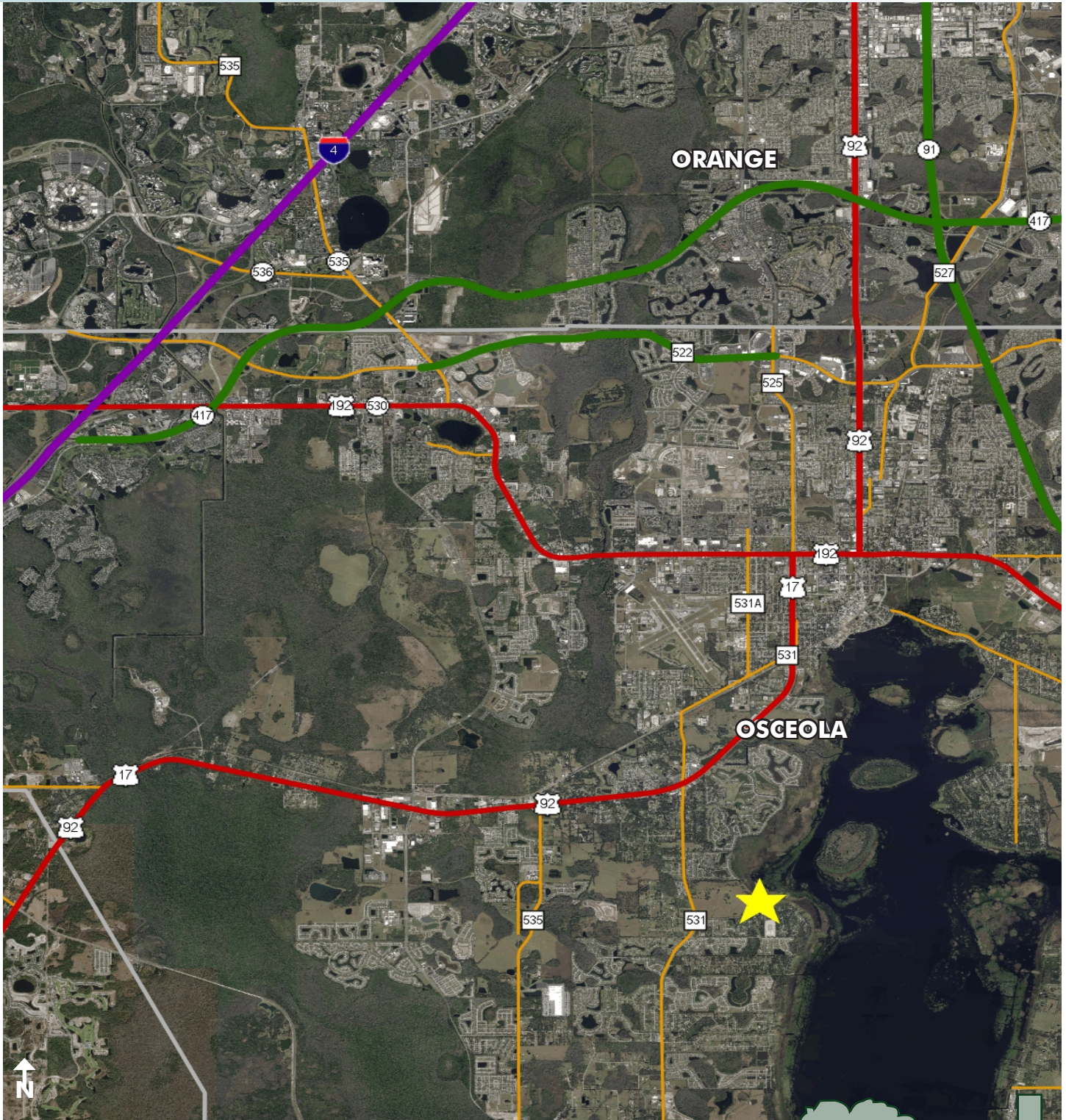
Maury L. Carter & Associates, Inc.
407-422-3144 | www.maurycarter.com



LAKEFRONT RESIDENTIAL LAND

4.38± acres

Osceola County, FL



LOCATION MAP

— Commercial Real Estate Investments | Management | Brokerage | Development | Land

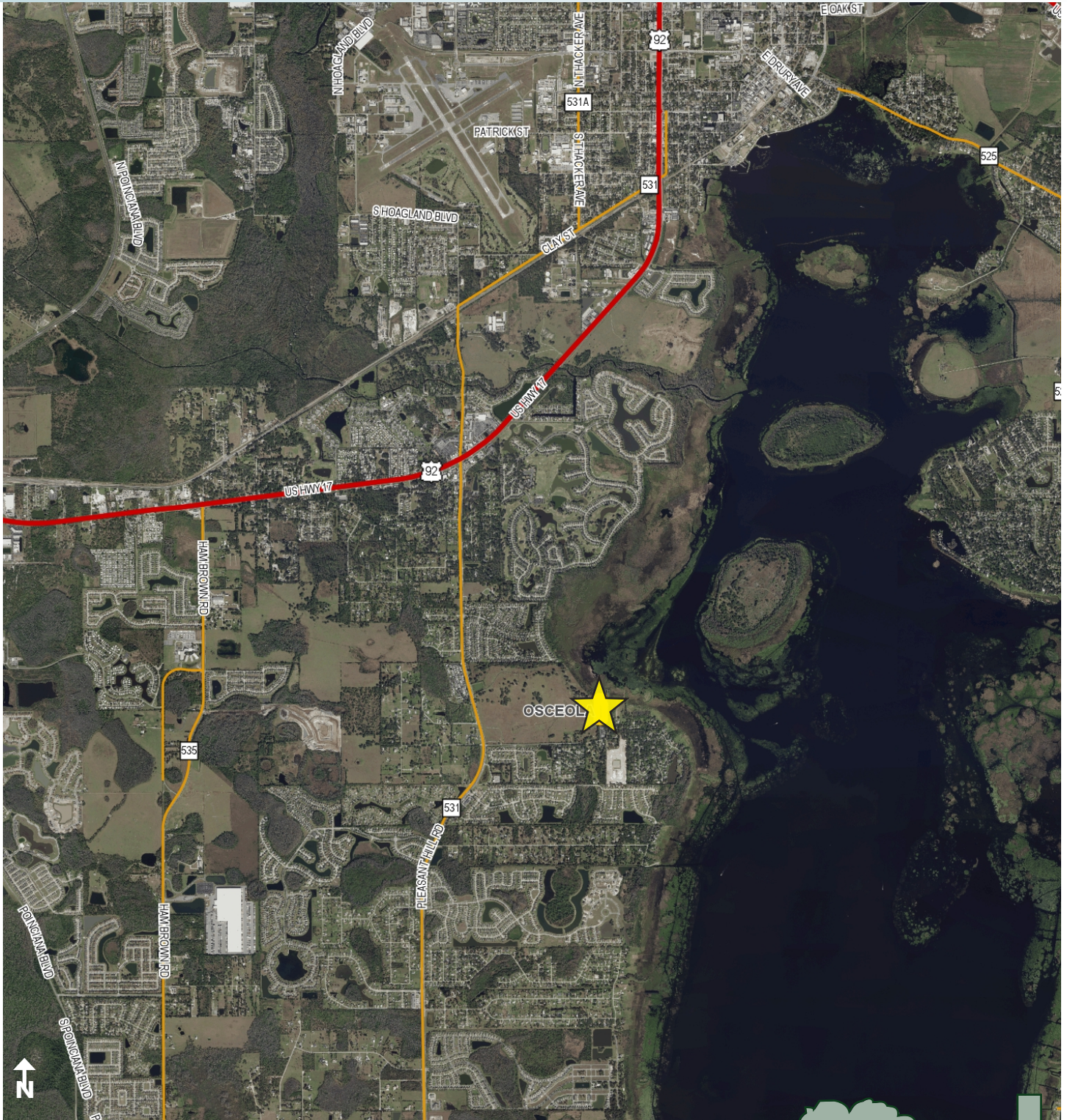
Maury L. Carter & Associates, Inc.
407-422-3144 | www.maurycarter.com



LAKEFRONT RESIDENTIAL LAND

4.38± acres

Osceola County, FL



REGIONAL MAP

— Commercial Real Estate Investments | Management | Brokerage | Development | Land

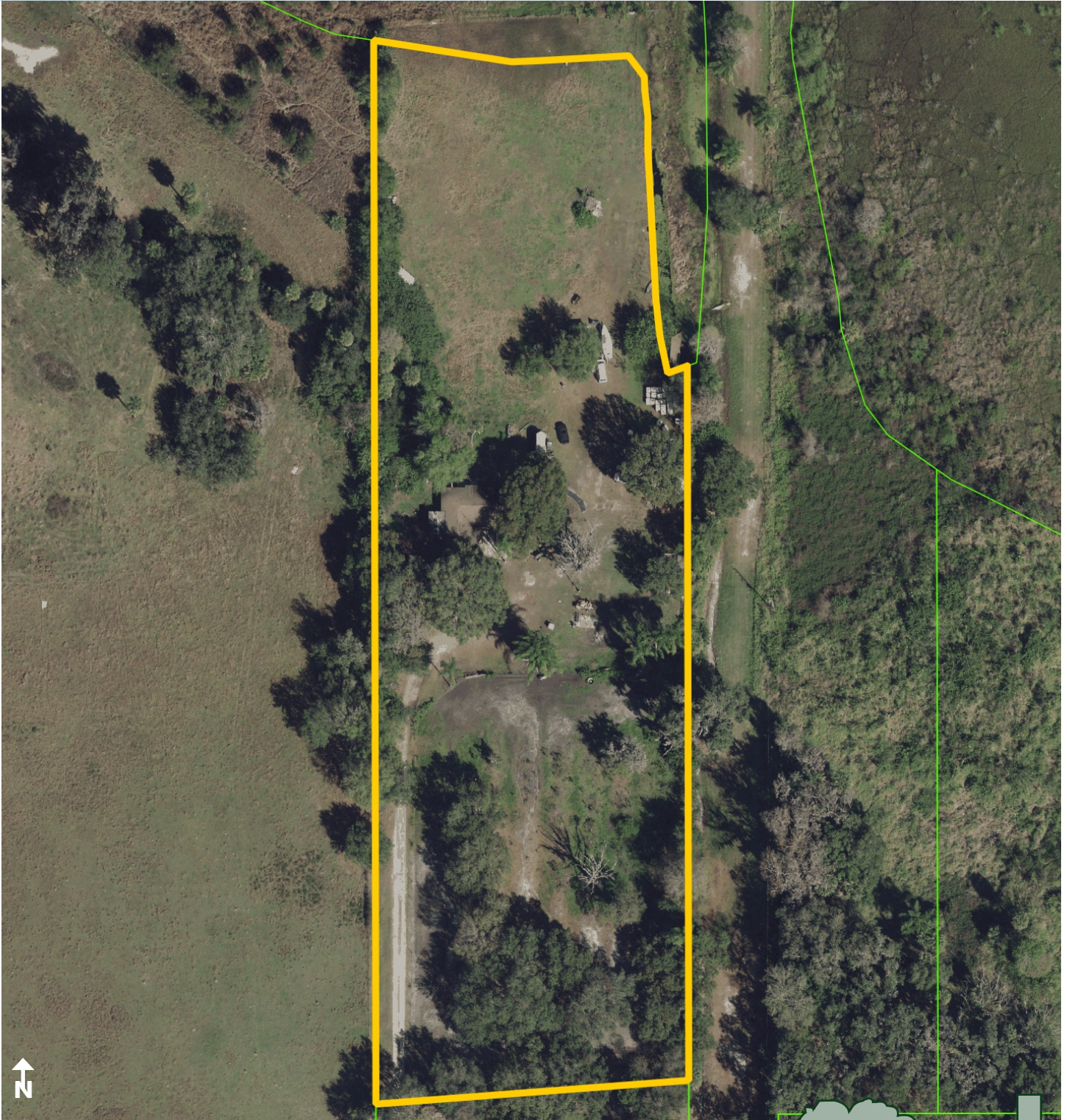
Maury L. Carter & Associates, Inc.
407-422-3144 | www.maurycarter.com



LAKEFRONT RESIDENTIAL LAND

4.38± acres

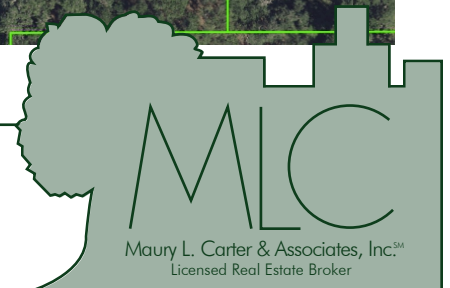
Osceola County, FL



PROPERTY MAP

— Commercial Real Estate Investments | Management | Brokerage | Development | Land

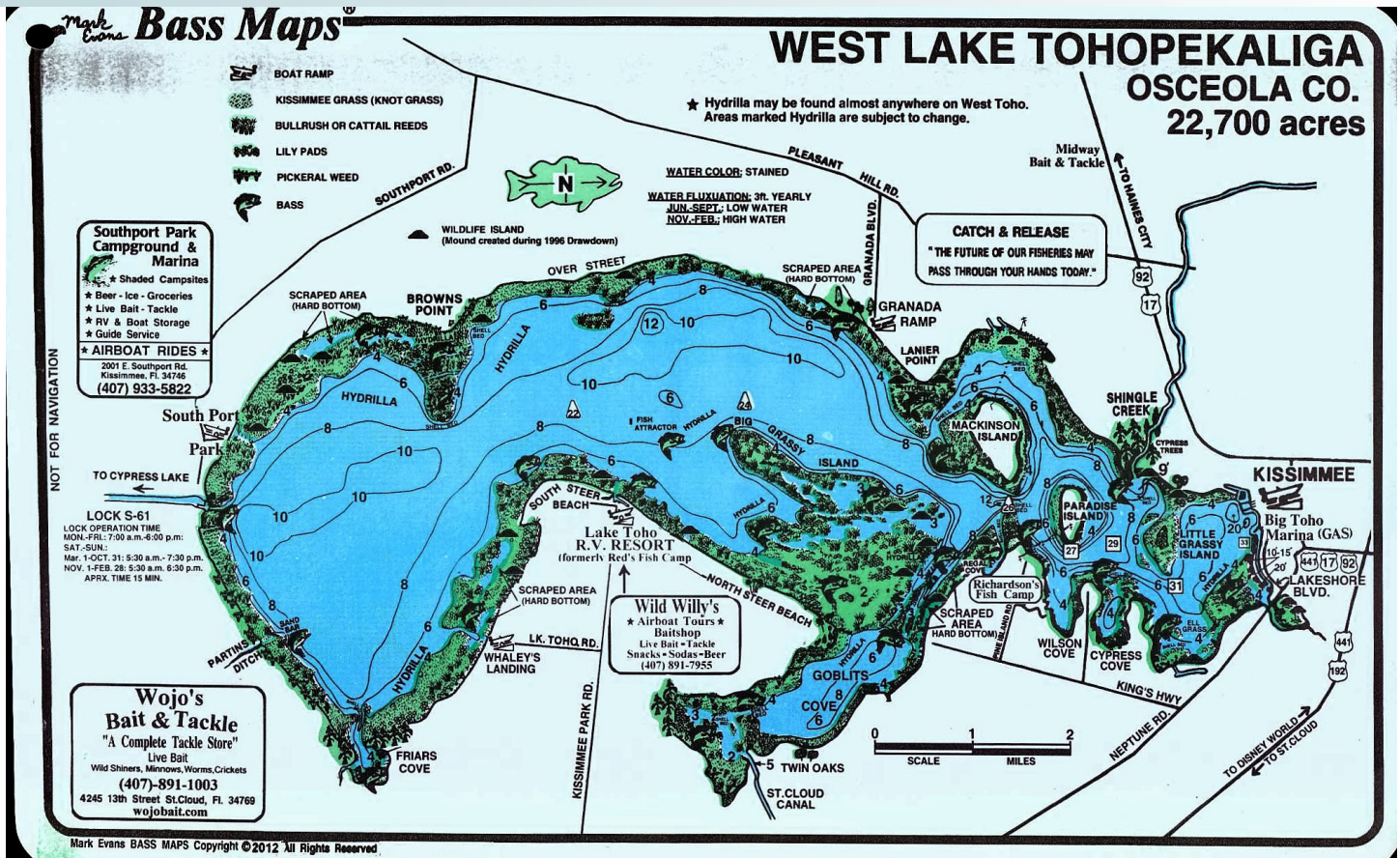
Maury L. Carter & Associates, Inc.
407-422-3144 | www.maurycarter.com



LAKEFRONT RESIDENTIAL LAND

4.38± acres

Osceola County, FL



LAKE TOHO MAP

— Commercial Real Estate Investments | Management | Brokerage | Development | Land

Maury L. Carter & Associates, Inc.
 407-422-3144 | www.maurycarter.com

