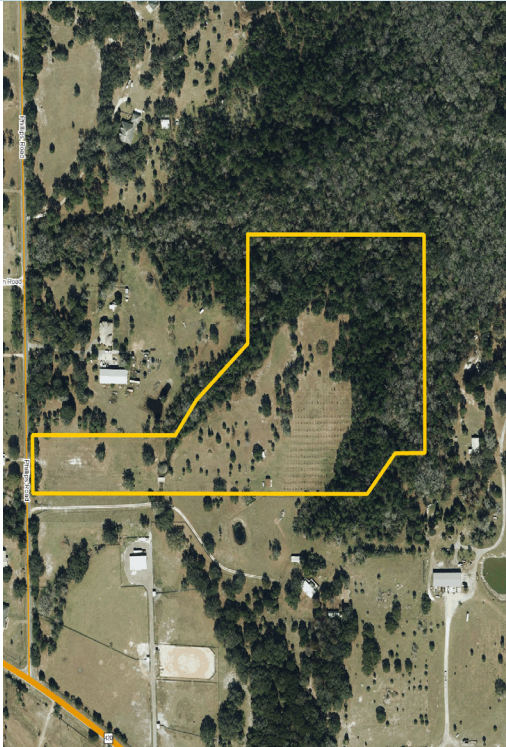


EAST ORANGE COUNTY LAND

21.73± acres

Orange County, FL



LOCATION

2403 Phillips Road, Christmas, FL 32709

SIZE

21.73± acres

PRICE

\$249,000

ZONING/FLU

A-2; 1 unit/10 acres

PARCEL ID

33-22-171492-00-016

ROAD FRONTAGE

210' of frontage on Phillips Road

UTILITIES

Power to site, well and septic to be installed by buyer

DESCRIPTION

Country living without giving up your access to the city life! This east Orange County acreage is ideal for someone who wants to work in the greater Orlando area, commute, and have a quiet estate they can retreat and relax on. Deer and turkey are on this property. This property would be perfect for equestrian and cattle estate and users.

Offering subject to errors, omission, prior sale or withdrawal without notice.

SINGLE FAMILY OR TOWNHOME

— Commercial Real Estate Investments | Management | Brokerage | Development | Land —

Maury L. Carter & Associates, Inc.
407-422-3144 | www.maurycarter.com



EAST ORANGE COUNTY LAND

21.73± acres

Orange County, FL



— Commercial Real Estate Investments | Management | Brokerage | Development | Land —

Maury L. Carter & Associates, Inc.
407-422-3144 | www.maurycarter.com



EAST ORANGE COUNTY LAND

21.73± acres

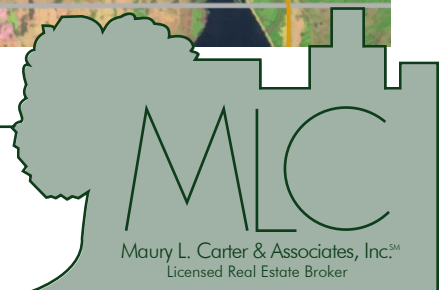
Orange County, FL



LOCATION MAP

— Commercial Real Estate Investments | Management | Brokerage | Development | Land

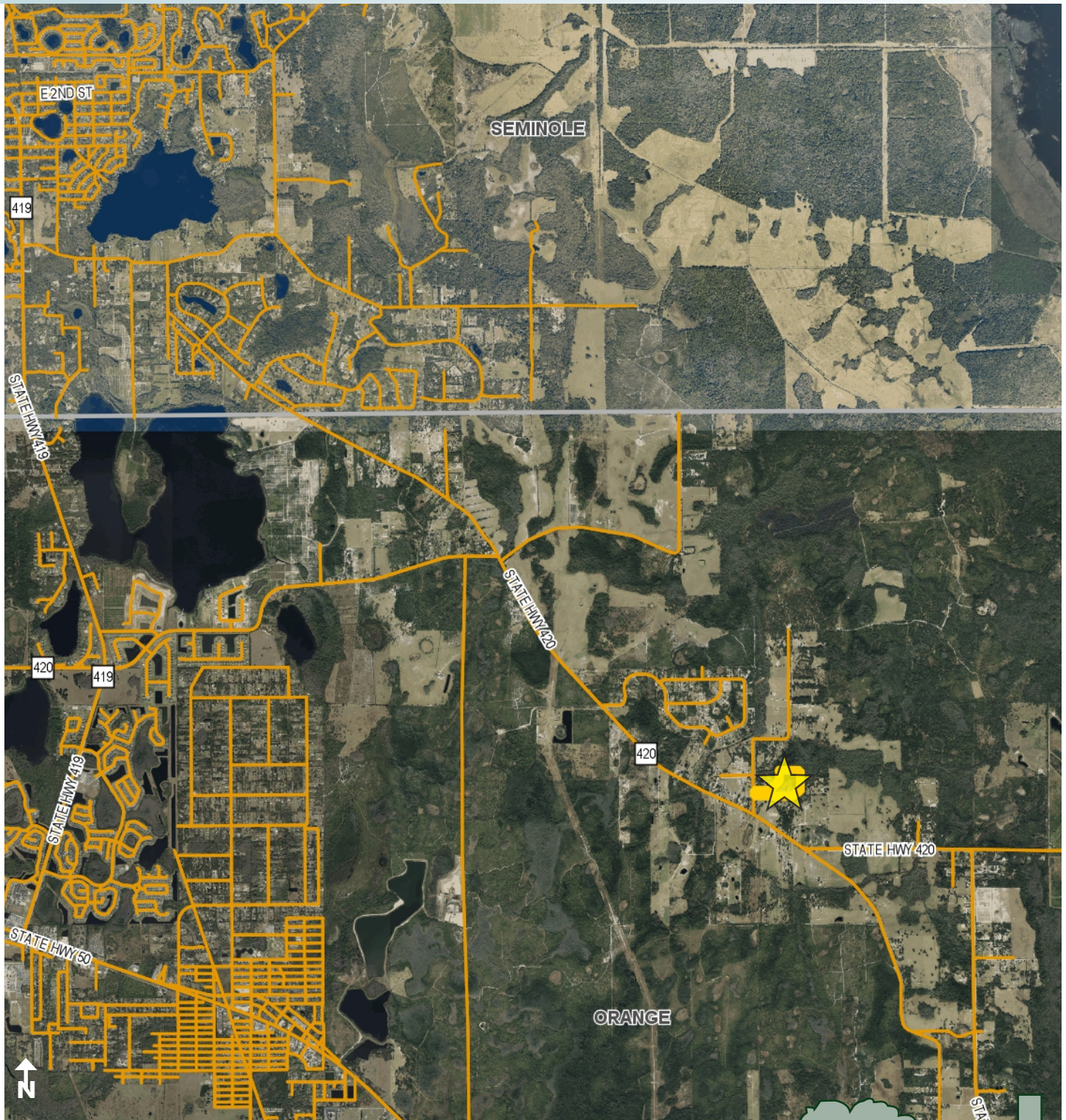
Maury L. Carter & Associates, Inc.
407-422-3144 | www.maurycarter.com



EAST ORANGE COUNTY LAND

21.73± acres

Orange County, FL



REGIONAL MAP

— Commercial Real Estate Investments | Management | Brokerage | Development | Land —

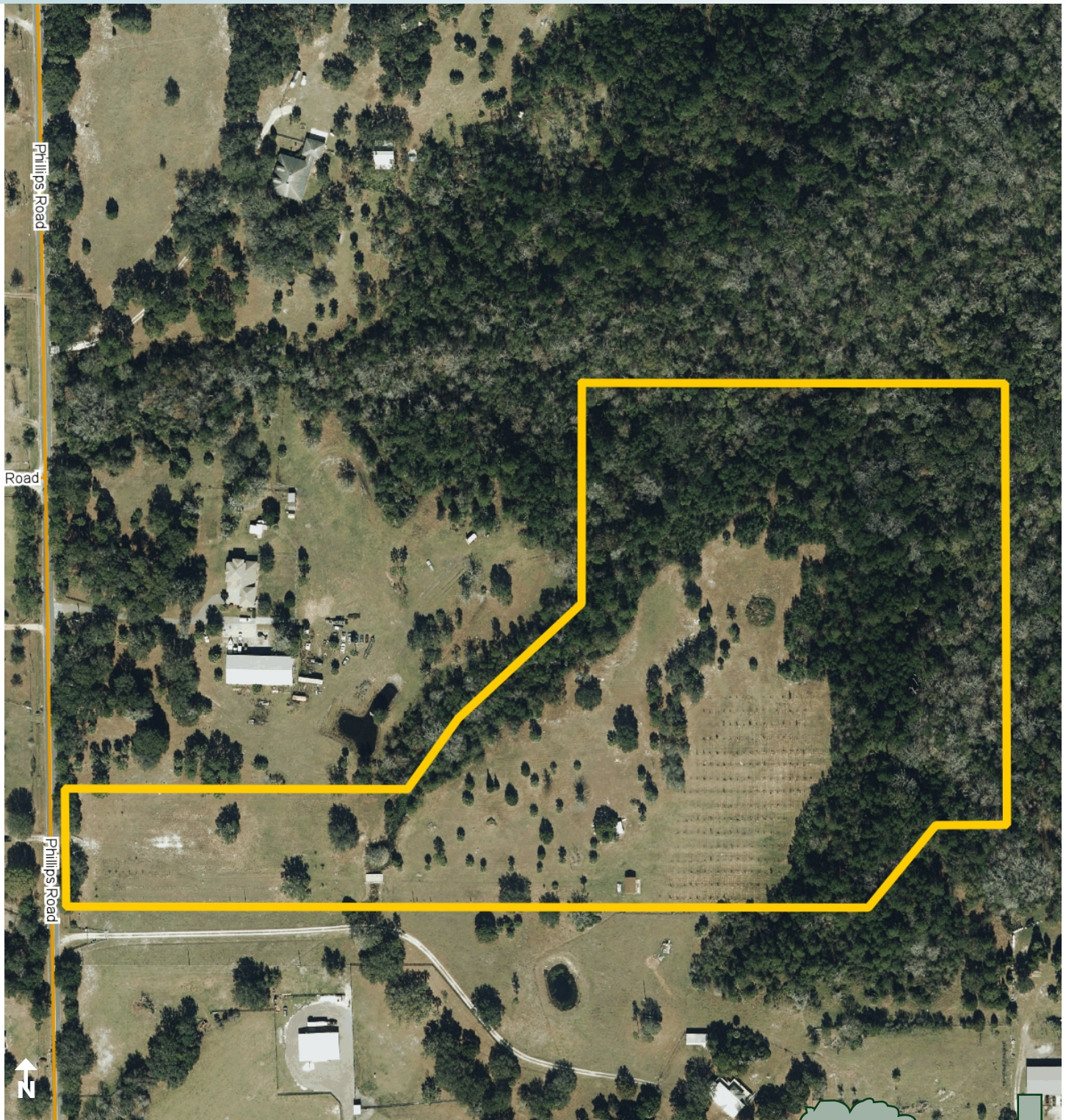
Maury L. Carter & Associates, Inc.
407-422-3144 | www.maurycarter.com



EAST ORANGE COUNTY LAND

21.73± acres

Orange County, FL



PROPERTY MAP

— Commercial Real Estate Investments | Management | Brokerage | Development | Land

Maury L. Carter & Associates, Inc.
407-422-3144 | www.maurycarter.com

