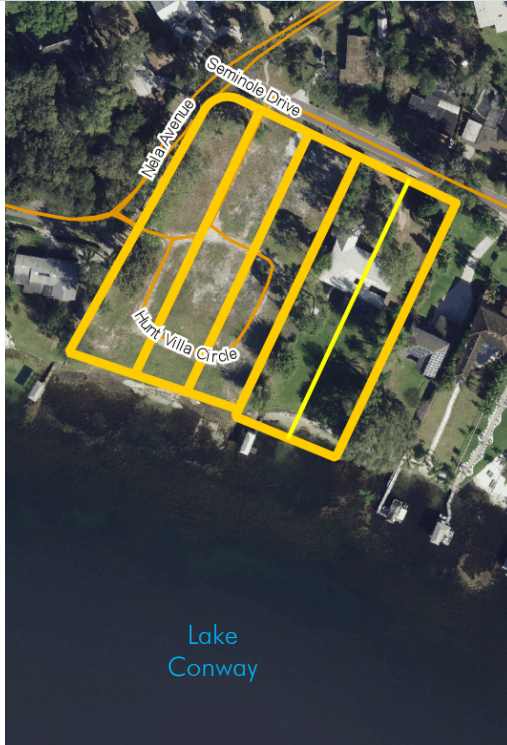


# LAKEFRONT RESIDENTIAL LAND/LOTS

5 Lots

Orange County, FL



## LOCATION

Seminole Drive in Belle Isle, Florida

## PRICE

\$599,000 per lot

## ZONING

R-1-AA

## ROAD FRONTAGE

Seminole Drive and Nela Avenue

## DESCRIPTION

**ATTENTION RESIDENTIAL DEVELOPERS...THIS WON'T LAST!** Excellent development site on the Conway chain of lakes offering beautiful views of Lake Conway within a short distance from city amenities. This site is located approximately 10 minutes from Orlando International Airport, 20 minutes to Downtown Orlando and 25 minutes from Walt Disney World and the attractions. Extensive economic activity in Orange County make this prime property for residential development. Strong economic growth is expected to continue in the region.

Natural elements give this site incredible aesthetic appeal, featuring picturesque lakefront views of Lake Conway, with frontage along Lake Conway.

Offering subject to errors, omission, prior sale or withdrawal without notice.

RESIDENTIAL LOTS

— Commercial Real Estate Investments | Management | Brokerage | Development | Land —

Maury L. Carter & Associates, Inc.  
407-422-3144 | [www.maurycarter.com](http://www.maurycarter.com)

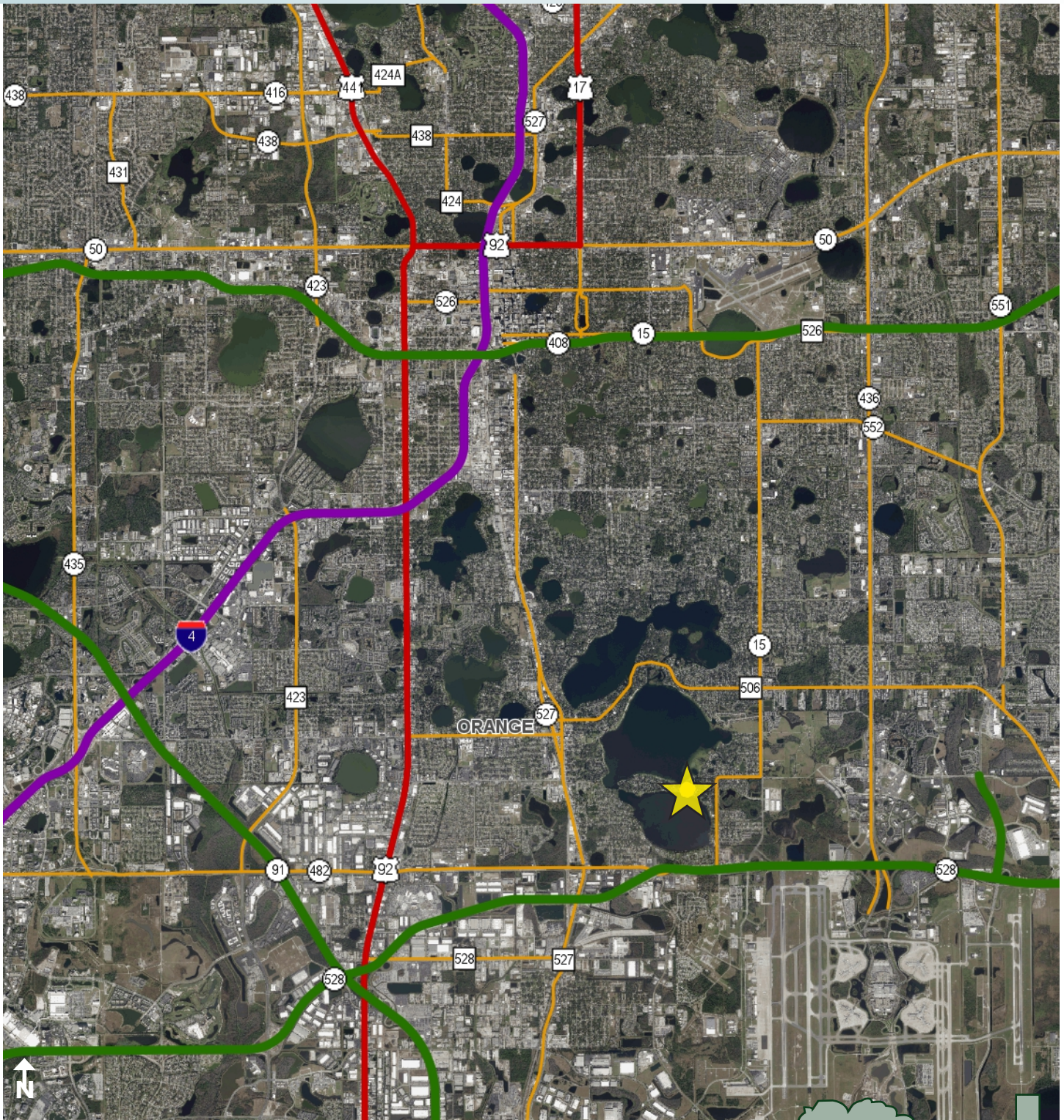




# LAKEFRONT RESIDENTIAL LAND/LOT

5 Lots

Orange County, FL



LOCATION MAP

— Commercial Real Estate Investments | Management | Brokerage | Development | Land

Maury L. Carter & Associates, Inc.  
407-422-3144 | [www.maurycarter.com](http://www.maurycarter.com)

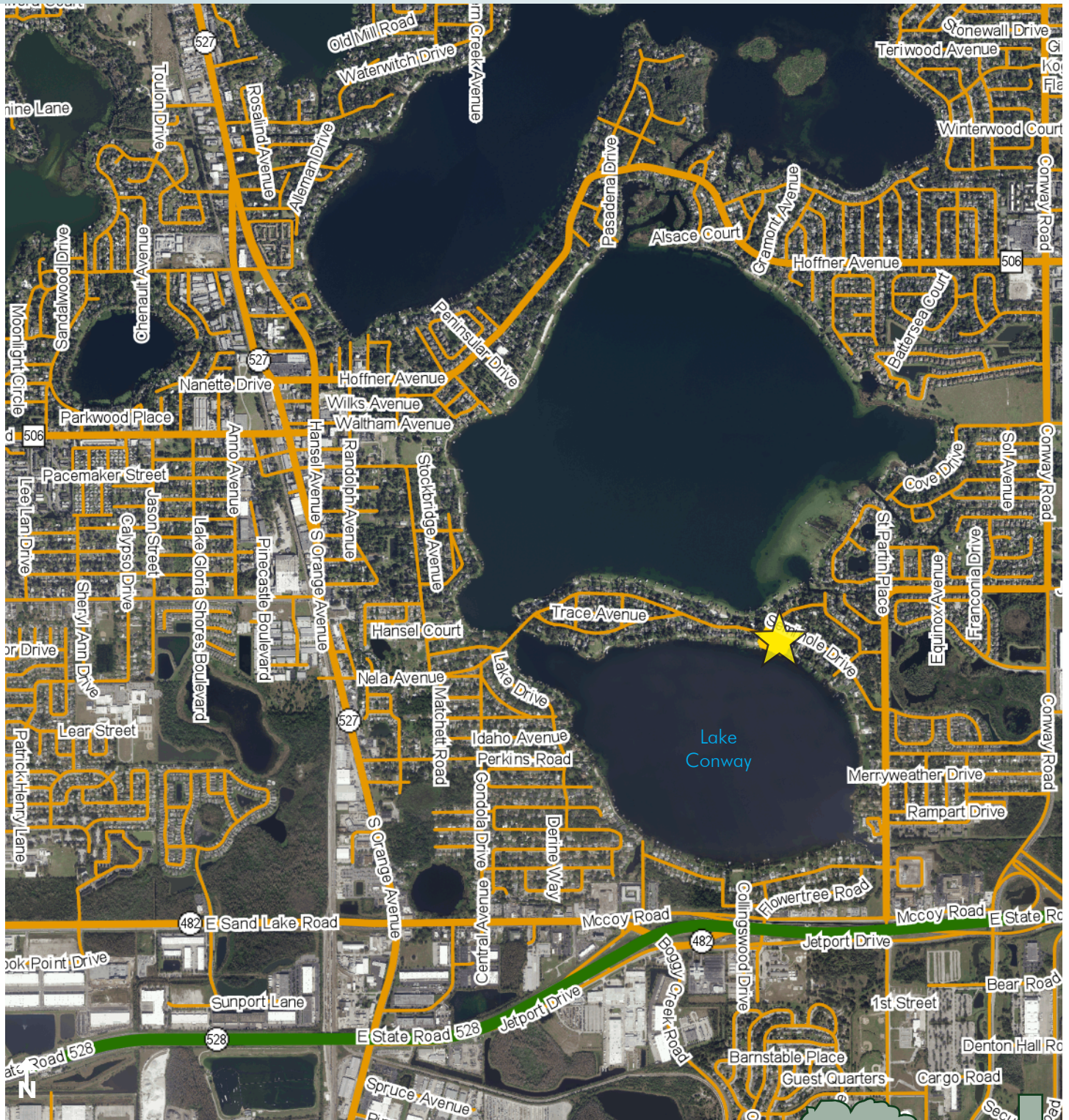




# LAKEFRONT RESIDENTIAL LAND/LOT

5 Lots

Orange County, FL



## REGIONAL MAP

— Commercial Real Estate Investments | Management | Brokerage | Development | Land

Maury L. Carter & Associates, Inc.  
407-422-3144 | [www.maurycarter.com](http://www.maurycarter.com)





# LAKEFRONT RESIDENTIAL LAND/LOT

5 Lots

Orange County, FL



PROPERTY MAP

— Commercial Real Estate Investments | Management | Brokerage | Development | Land —

Maury L. Carter & Associates, Inc.  
407-422-3144 | [www.maurycarter.com](http://www.maurycarter.com)

