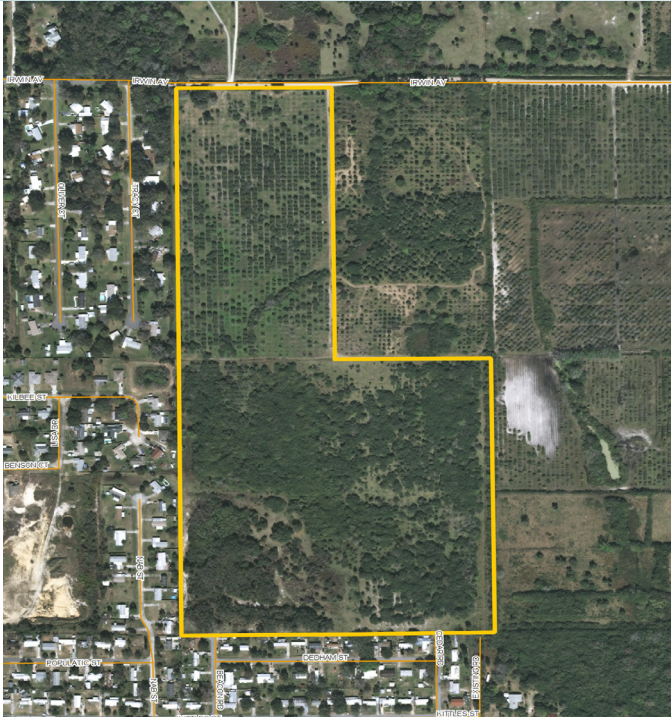


MIMS RURAL ACREAGE

61 ± acres

Mims, Brevard County, FL



LOCATION/PARCEL ID

3425 Irwin Avenue

Mims, FL 32754

PID: 21-35-05-00-504

SIZE

61 ± acres

PRICE

\$640,500 or \$10,500/acre

ZONING/FLU

RU-1-11/Res-4 (4 units/acre)

ROAD FRONTAGE

660' on Irwin Avenue

DESCRIPTION

This property was previously a citrus grove and now is vacant land used for cattle grazing. This property could be perfect for recreational enthusiasts or those looking for "extra elbow room" to buy and build an estate. Perfect for hobby farming and ranching or equestrian activities. This property is located 30 minutes from New Smyrna Beach and 10 minutes from Titusville and the Space Coast.

Offering subject to errors, omission, prior sale or withdrawal without notice.



— Commercial Real Estate Investments | Management | Brokerage | Development | Land

Maury L. Carter & Associates, Inc.

407-422-3144 | www.maurycarter.com

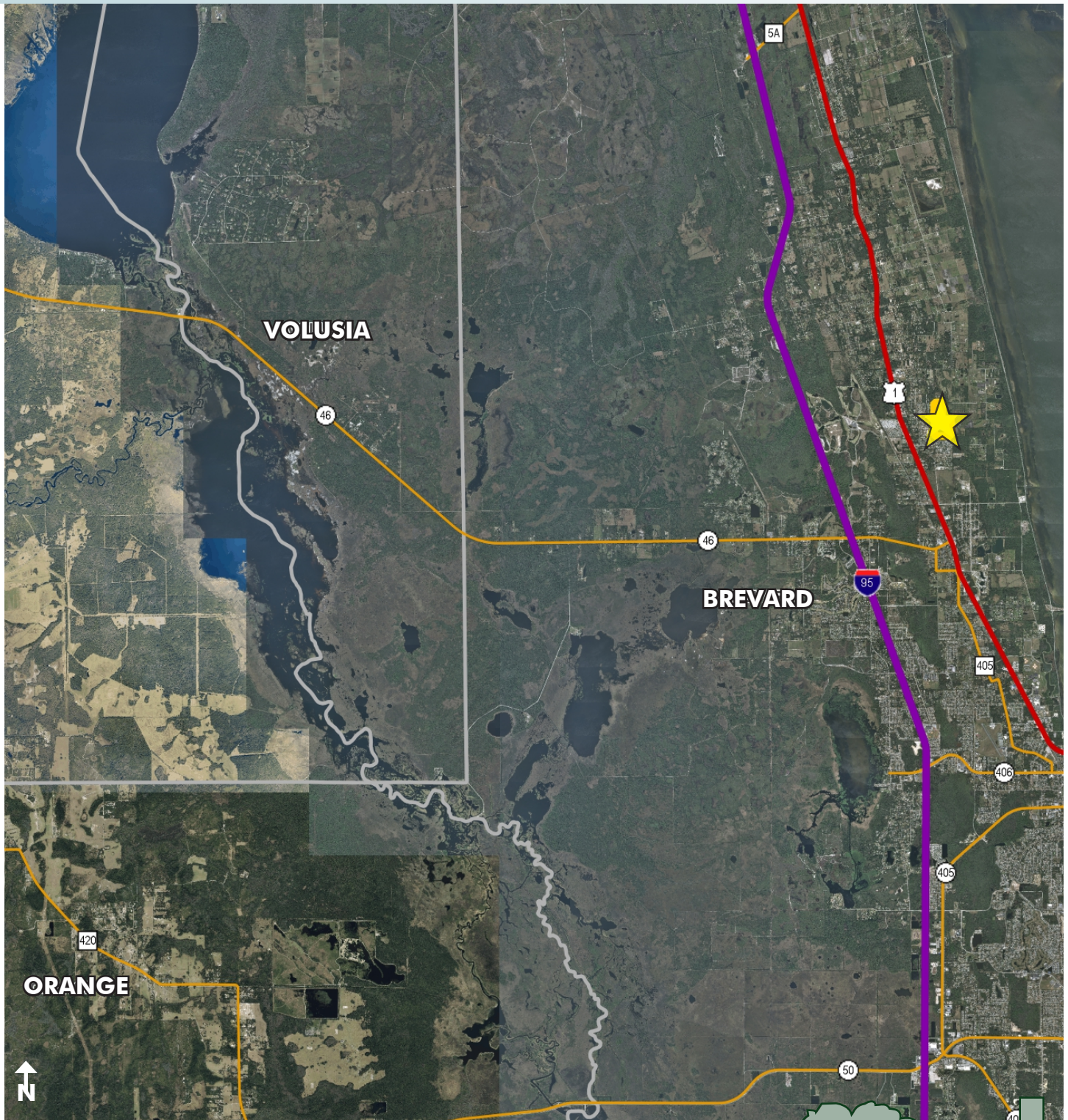


LAND FOR SALE

MIMS RURAL ACREAGE

61 ± acres

Mims, Brevard County, FL



LOCATION MAP

— Commercial Real Estate Investments | Management | Brokerage | Development | Land

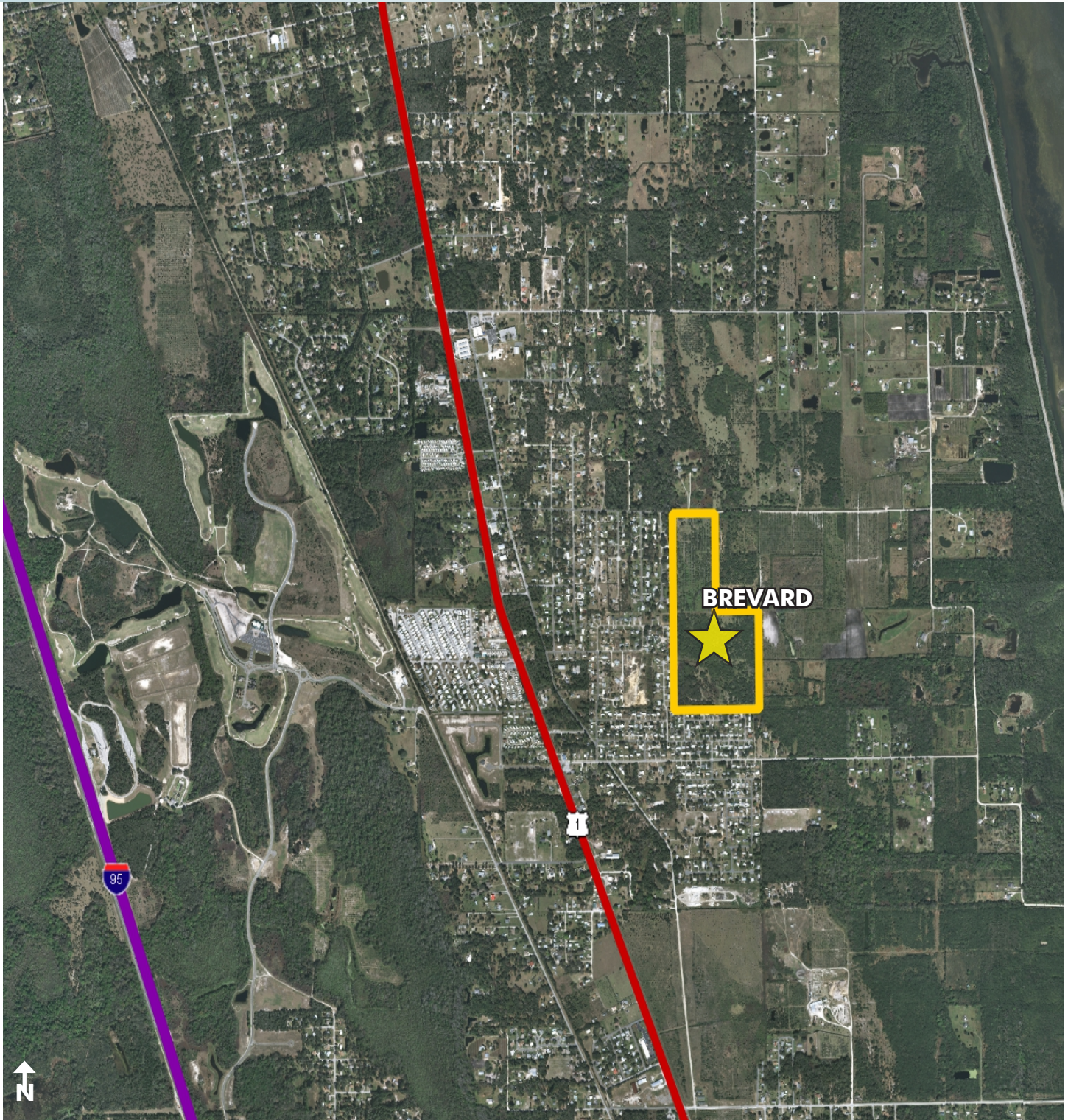
Maury L. Carter & Associates, Inc.
407-422-3144 | www.maurycarter.com



MIMS RURAL ACREAGE

61 ± acres

Mims, Brevard County, FL



REGIONAL MAP

— Commercial Real Estate Investments | Management | Brokerage | Development | Land

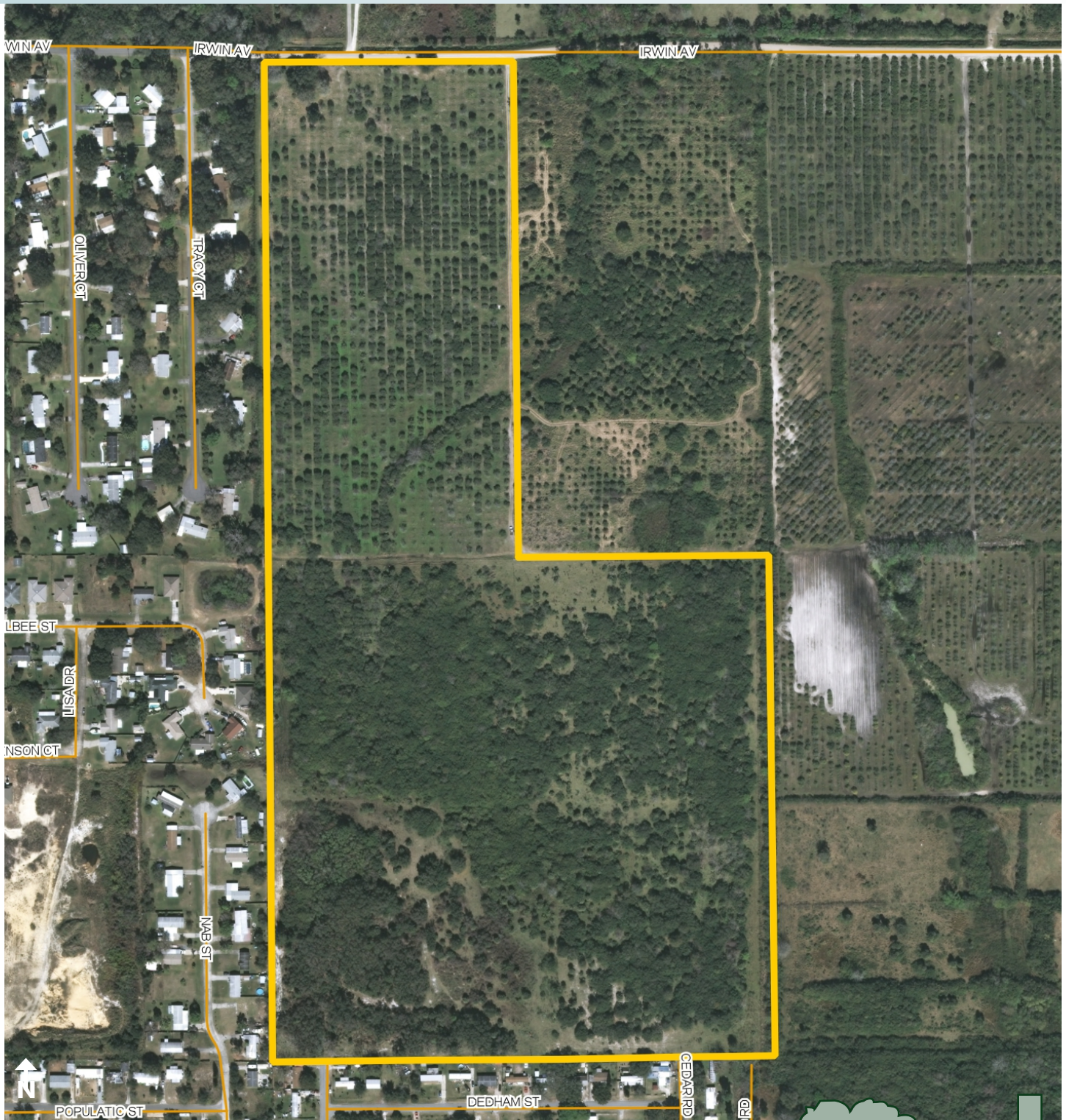
Maury L. Carter & Associates, Inc.
407-422-3144 | www.maurycarter.com



MIMS RURAL ACREAGE

61 ± acres

Mims, Brevard County, FL



PROPERTY MAP

— Commercial Real Estate Investments | Management | Brokerage | Development | Land

Maury L. Carter & Associates, Inc.
407-422-3144 | www.maurycarter.com

