

HOME & GREENHOUSES FOR LEASE

5.67± acres

Lake County



LOCATION/DESCRIPTION

Home and greenhouses for lease. The home is 1,300 square feet with 3 bedrooms, 2 bath, and an attached garage.

The greenhouse space on the property is 26,472 square feet.

The property is a former nursery including a residence utilized as an office, two greenhouses, a packing house and ancillary structures totaling 69,394 sqft.

ZONING

Agricultural/Regional Office by Lake County.

ROAD FRONTAGE/UTILITIES

520± feet on SR 46

4" well with power unit/septic tank and drain field.

Offering subject to errors, omission, prior sale or withdrawal without notice.

SIZE

5.67± acres

LEASE PRICING

Home: \$1,300/month

Greenhouse: \$1.00/square foot

Warehouses: \$7.00/square foot

SHOWINGS BY APPOINTMENT ONLY.

PLEASE CALL 386-747-3618

FOR LEASE

— Commercial Real Estate Investments | Management | Brokerage | Development | Land

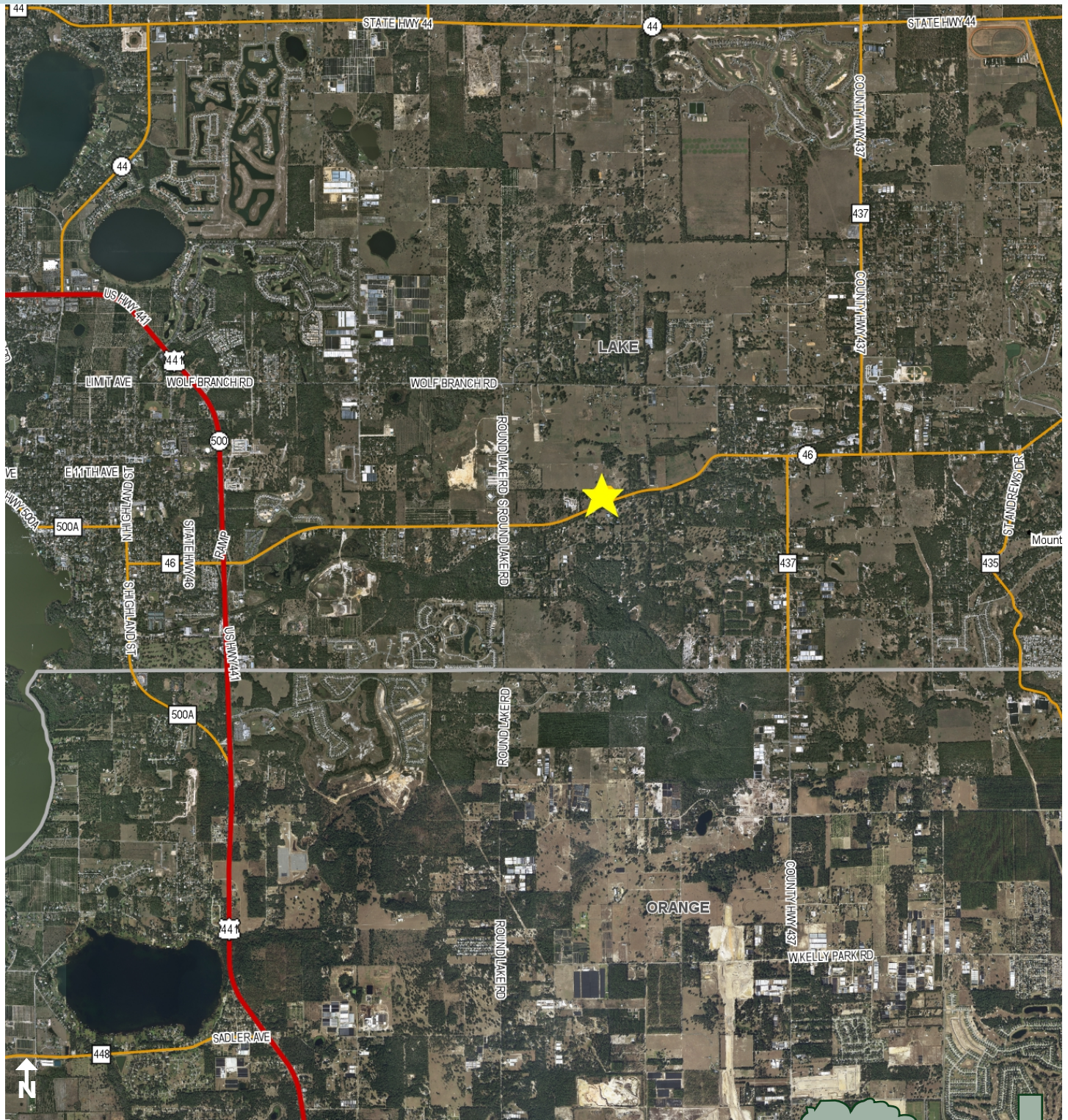
Maury L. Carter & Associates, Inc.
407-422-3144 | www.maurycarter.com



HOME & GREENHOUSES FOR LEASE

5.67± acres

Lake County



LOCATION MAP

— Commercial Real Estate Investments | Management | Brokerage | Development | Land

Maury L. Carter & Associates, Inc.
407-422-3144 | www.maurycarter.com



HOME & GREENHOUSES FOR LEASE

5.67± acres

Lake County



PROPERTY MAP

— Commercial Real Estate Investments | Management | Brokerage | Development | Land

Maury L. Carter & Associates, Inc.
407-422-3144 | www.maurycarter.com



HOME & GREENHOUSES FOR LEASE

5.67± acres

Lake County



HOME PHOTOS

— Commercial Real Estate Investments | Management | Brokerage | Development | Land

Maury L. Carter & Associates, Inc.

407-422-3144 | www.maurycarter.com



Maury L. Carter & Associates, Inc.SM
Licensed Real Estate Broker

HOME & GREENHOUSES FOR LEASE

5.67± acres

Lake County



GREENHOUSE/WAREHOUSE PHOTOS

— Commercial Real Estate Investments | Management | Brokerage | Development | Land

Maury L. Carter & Associates, Inc.
407-422-3144 | www.maurycarter.com

