

# PRIME DEVELOPMENT LAND ON US HWY 27

22.23± acres • Lake County, FL

LAND FOR SALE



## LOCATION

Located 2.3 miles north of FL Turnpike on US Hwy 27 and 1 mile south of Leesburg city limits.

## SIZE

22.23± acres

## PRICE

\$1,500,000

## ZONING/FLU

Rural Transition. Zoning change may allow commercial on property fronting Hwy 27.

## PARCEL ID

36-20-24-0001-000-0020

## ROAD FRONTAGE

320 +/- feet on Highway 27 and over 1,500 feet on Windmill Road

## DESCRIPTION

22.23 +/- acre in planted pines located on US Hwy 27 in Lake County Florida. This property appears to be all high and dry with significant road frontage and accessibility. This tract offers many potential uses in the fast growing area of Lake County.

Offering subject to errors, omission, prior sale or withdrawal without notice.

— Commercial Real Estate Investments | Management | Brokerage | Development | Land —

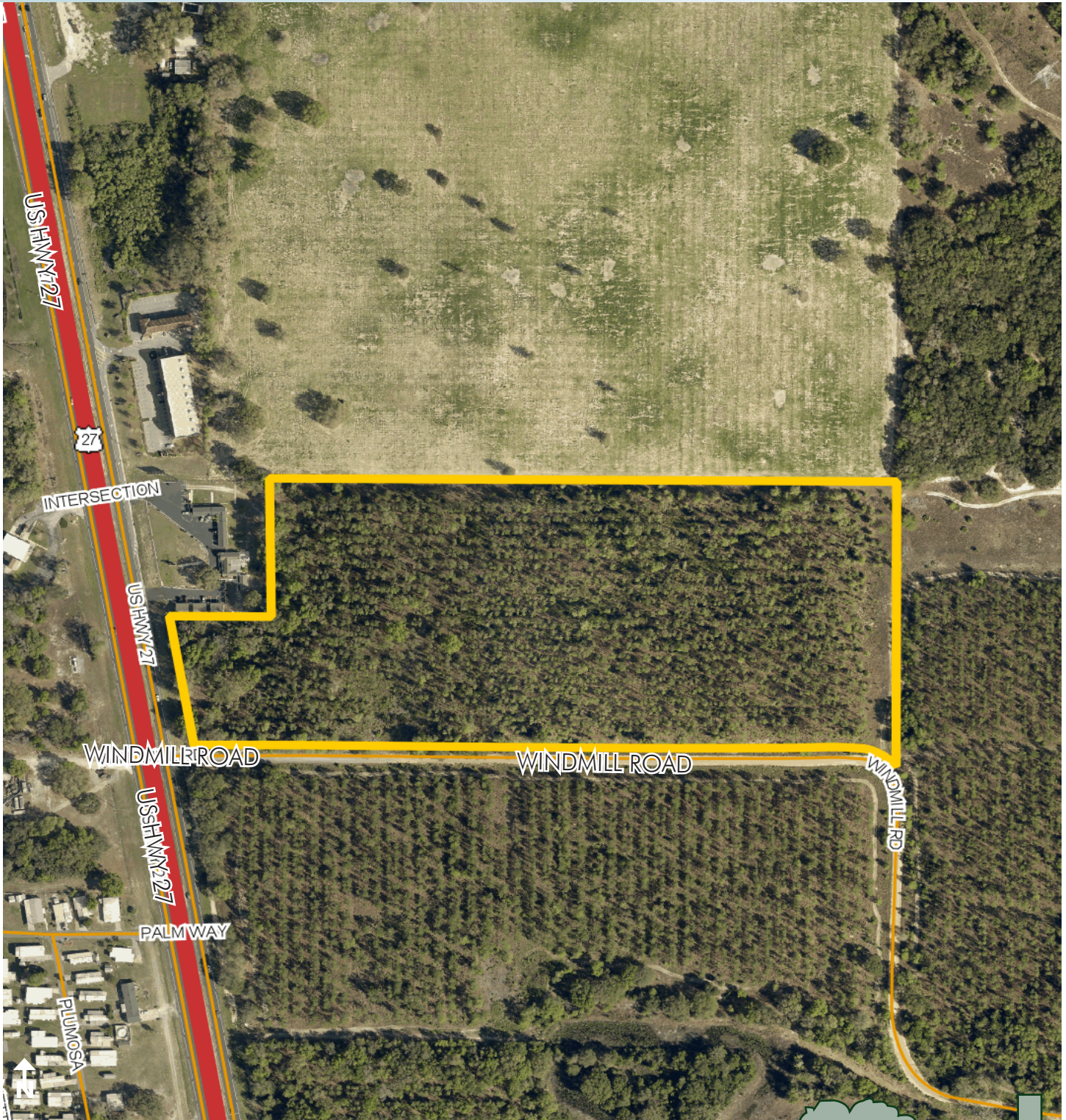
Maury L. Carter & Associates, Inc.  
407-422-3144 | [www.maurycarter.com](http://www.maurycarter.com)





# PRIME DEVELOPMENT LAND ON US HWY 27

22.23± acres • Lake County, FL



PROPERTY MAP

— Commercial Real Estate Investments | Management | Brokerage | Development | Land

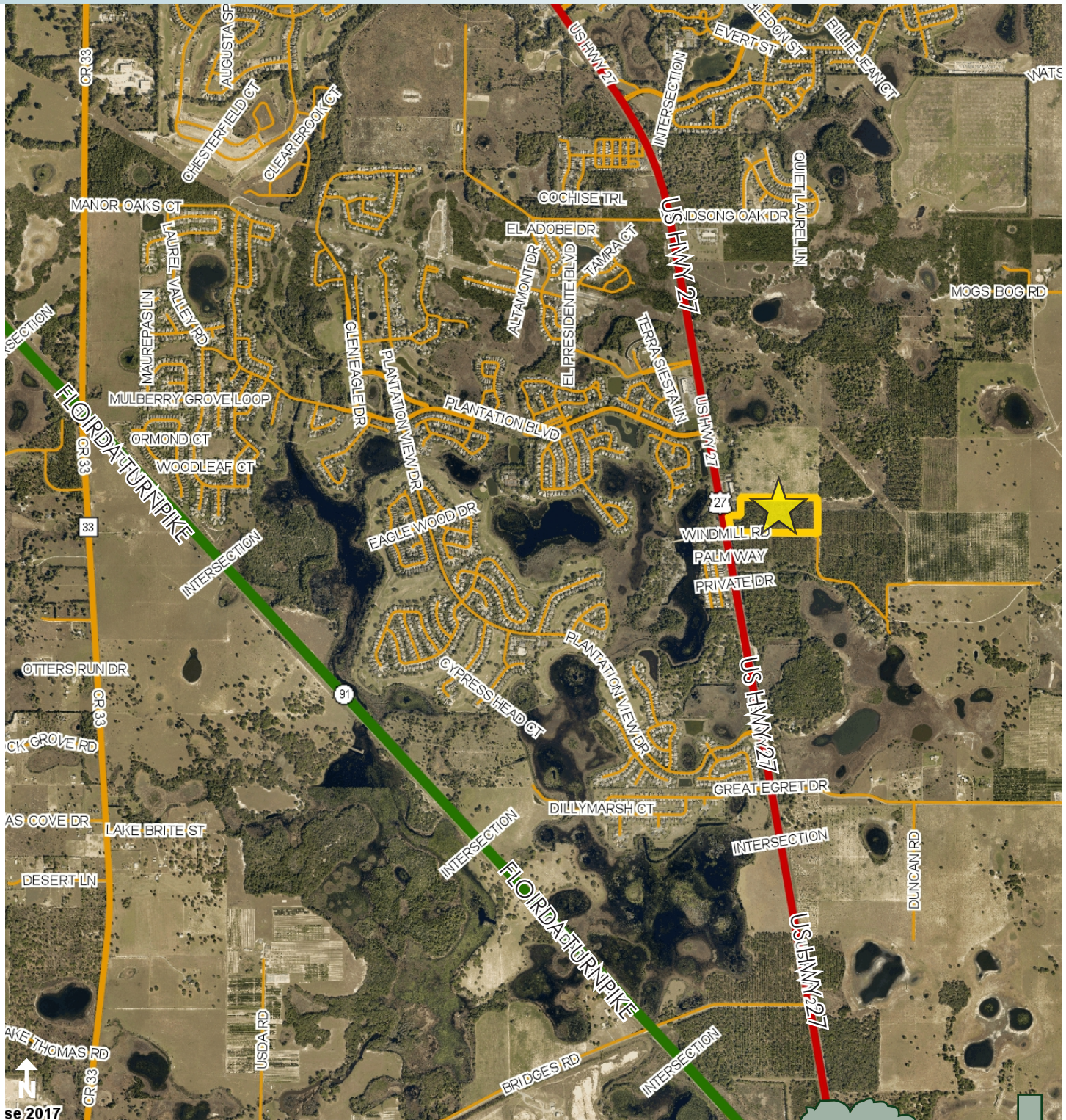
Maury L. Carter & Associates, Inc.  
407-422-3144 | [www.maurycarter.com](http://www.maurycarter.com)





# PRIME DEVELOPMENT LAND ON US HWY 27

22.23± acres • Lake County, FL



REGIONAL MAP

— Commercial Real Estate Investments | Management | Brokerage | Development | Land

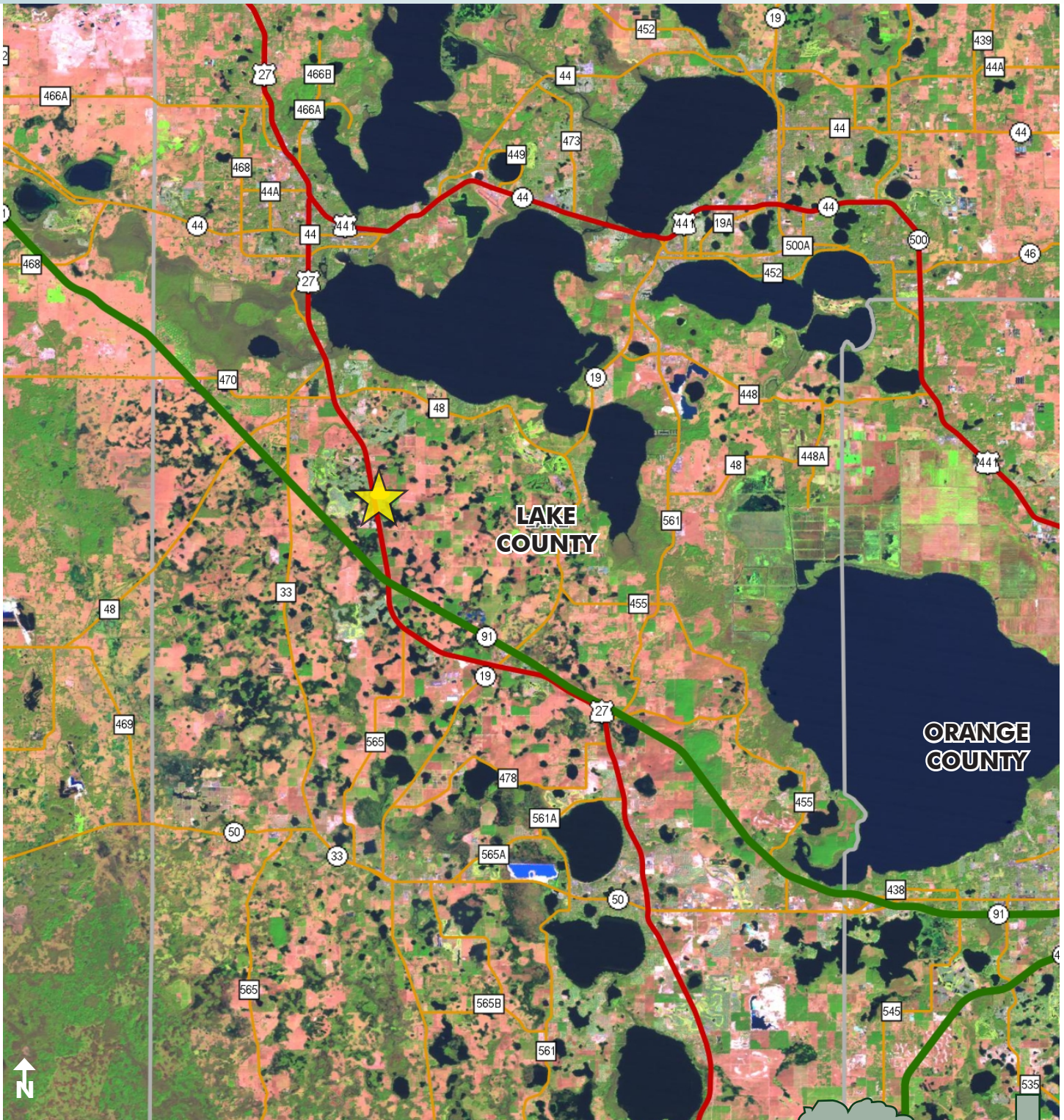
Maury L. Carter & Associates, Inc.  
407-422-3144 | [www.maurycarter.com](http://www.maurycarter.com)





# PRIME DEVELOPMENT LAND ON US HWY 27

22.23± acres • Lake County, FL



LOCATION MAP

— Commercial Real Estate Investments | Management | Brokerage | Development | Land

Maury L. Carter & Associates, Inc.  
407-422-3144 | [www.maurycarter.com](http://www.maurycarter.com)

