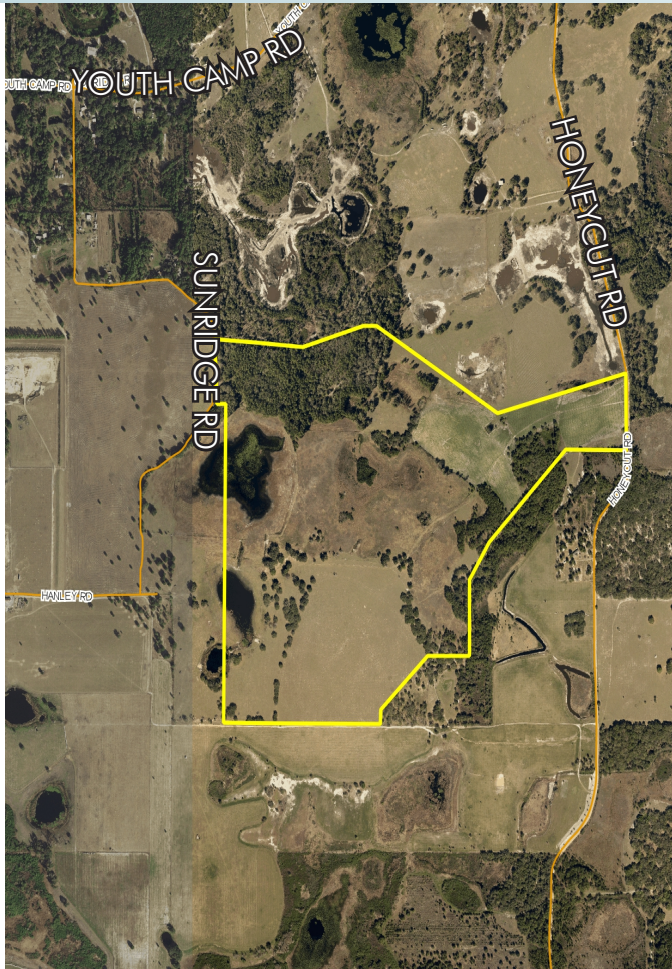


RESIDENTIAL DEVELOPMENT LAND

304± Acres

Lake County, FL



LOCATION

Located south of Youth Camp Road on the west side of Honeycut Road in northwest Lake County. Property can be accessed via Honeycut Road or Sundridge Road.

SIZE

304± acres - Available

PRICE

\$1,976,000 (\$6,500 per acre)

ZONING/FUTURE LAND USE

The property has a future land use category of Rural Residential which allows 1 unit per acre. The property still has a zoning of Agriculture as it has not been rezoned within the City.

ROAD FRONTAGE

620± on west side of Honeycut Road

UTILITIES

City of Mascotte

Offering subject to errors, omission, prior sale or withdrawal without notice.

LAND FOR SALE

— Commercial Real Estate Investments | Management | Brokerage | Development | Land —

Maury L. Carter & Associates, Inc.

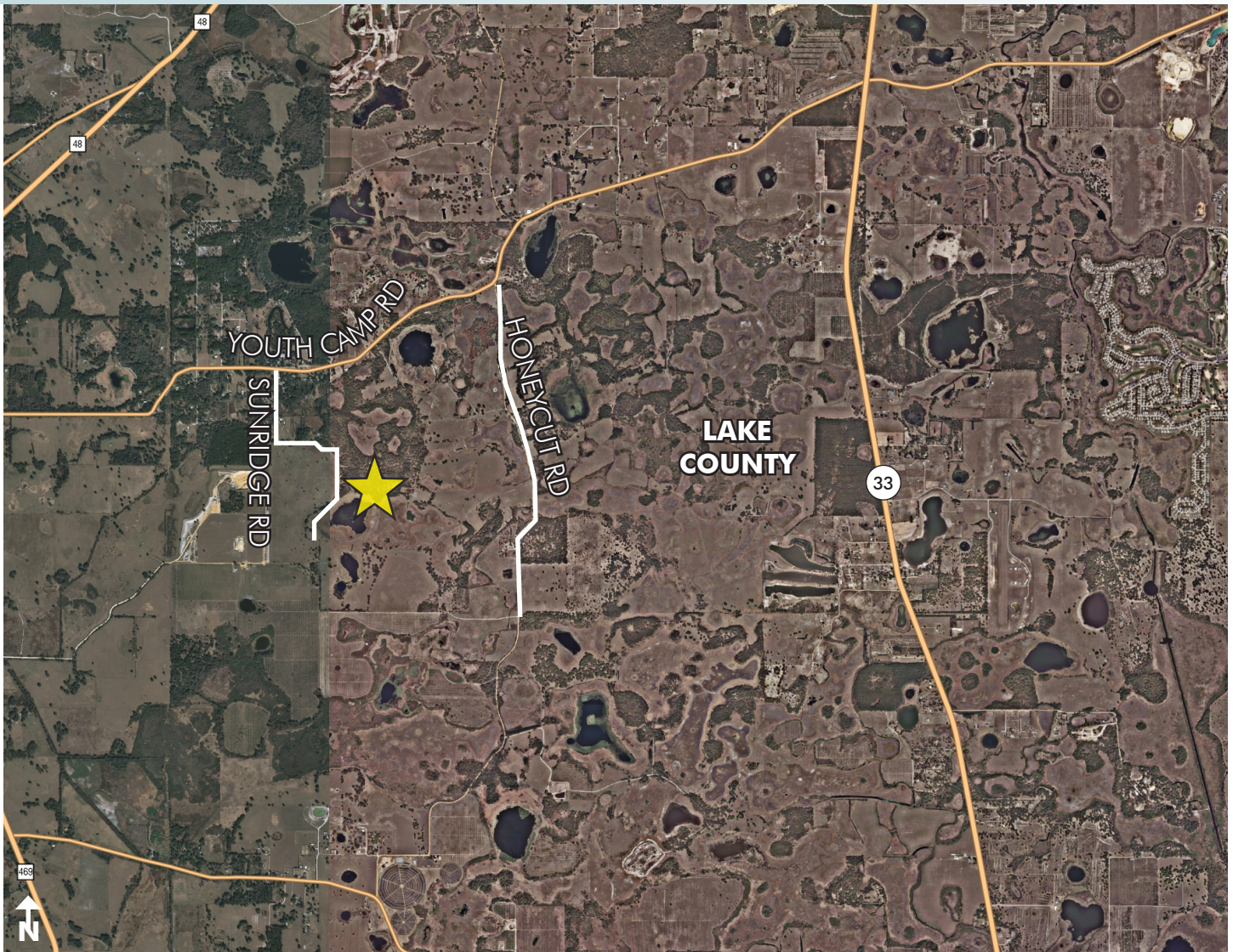
407-422-3144 | www.maurycarter.com



RESIDENTIAL DEVELOPMENT LAND

304± Acres

Lake County, FL



REGIONAL MAP

— Commercial Real Estate Investments | Management | Brokerage | Development | Land —

Maury L. Carter & Associates, Inc.

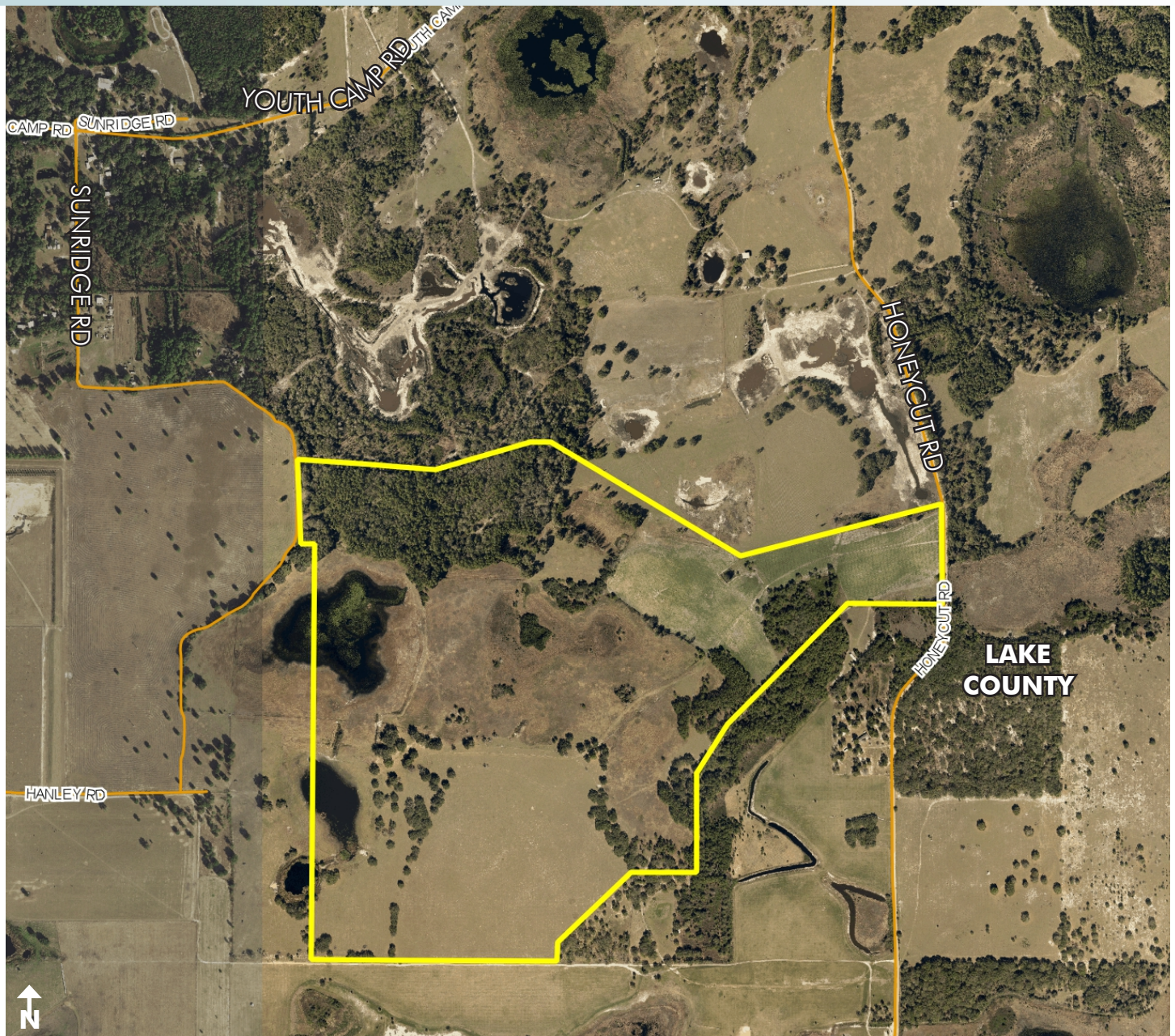
407-422-3144 | www.maurycarter.com



RESIDENTIAL DEVELOPMENT LAND

304± Acres

Lake County, FL



PROPERTY MAP

— Commercial Real Estate Investments | Management | Brokerage | Development | Land

Maury L. Carter & Associates, Inc.
407-422-3144 | www.maurycarter.com

