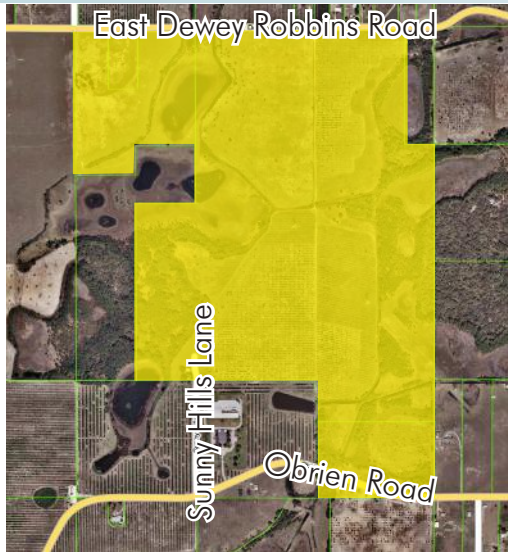


RESIDENTIAL DEVELOPMENT LAND

345± acres

Lake County, FL

LAND FOR SALE



LOCATION

Located near fast-growing Clermont and just minutes from the planned new Florida Turnpike/Hills of Minneola interchange. Property is on the south side of East Dewey Robbins Road, 2± miles west of Highway 19. Fast access to Highway 27, Florida Turnpike and Highway 19.

SIZE

345± acres

PRICE

\$4,950,000 or \$14,348/acre

ZONING/FUTURE LAND USE

Future Land Use is mixed use. Annexed into Groveland and zoned for up to 564 single-family units, 260 multi-family units, and 160,000sf of commercial/office.

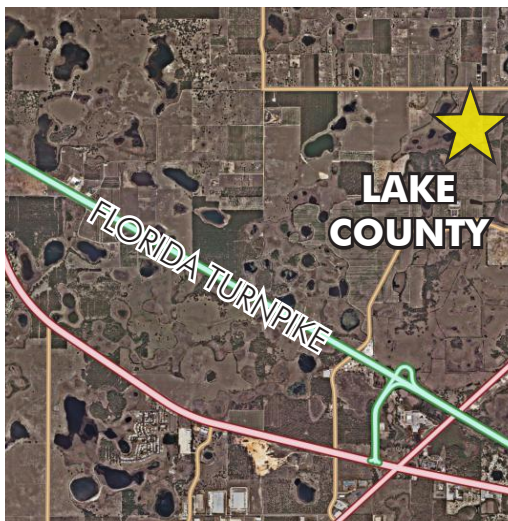
ROAD FRONTAGE

2,325'± on East Dewey Robbins Road
1,350'± on O'Brien Road.

DESCRIPTION

Beautiful rolling hills and water views.

Offering subject to errors, omission, prior sale or withdrawal without notice.



ADDITIONAL PARCEL

Additional 286 acres available to the east. Link to flyer: <https://www.maurycarter.com/wp-content/uploads/2019/03/Residential-Development-Land-286-Acres.pdf>

— Commercial Real Estate Investments | Management | Brokerage | Development | Land

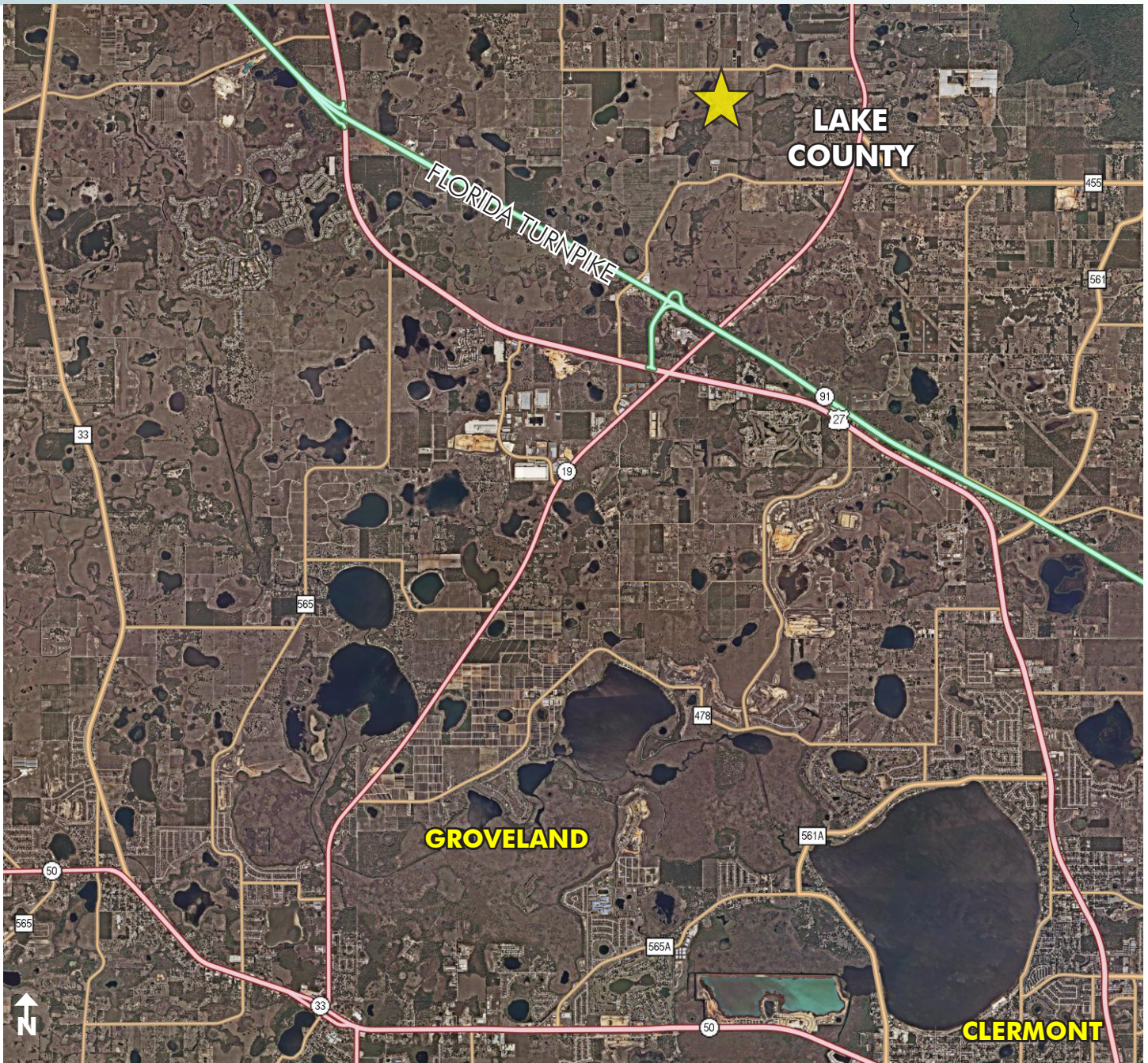
Maury L. Carter & Associates, Inc.
407-422-3144 | www.maurycarter.com



RESIDENTIAL DEVELOPMENT LAND

345± acres

Lake County, FL



REGIONAL MAP

— Commercial Real Estate Investments | Management | Brokerage | Development | Land —

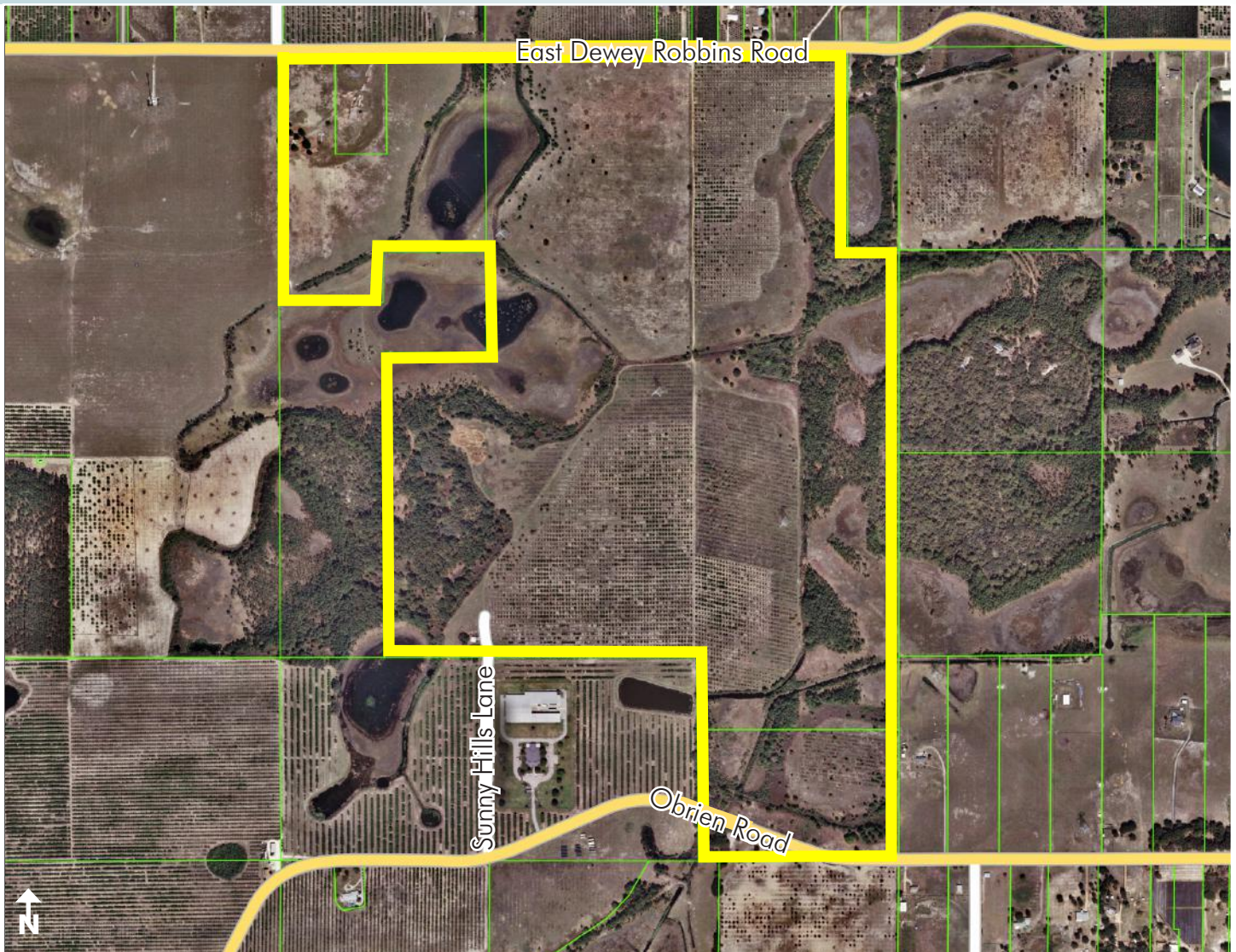
Maury L. Carter & Associates, Inc.
407-422-3144 | www.maurycarter.com



RESIDENTIAL DEVELOPMENT LAND

345± acres

Lake County, FL



PROPERTY MAP

— Commercial Real Estate Investments | Management | Brokerage | Development | Land —

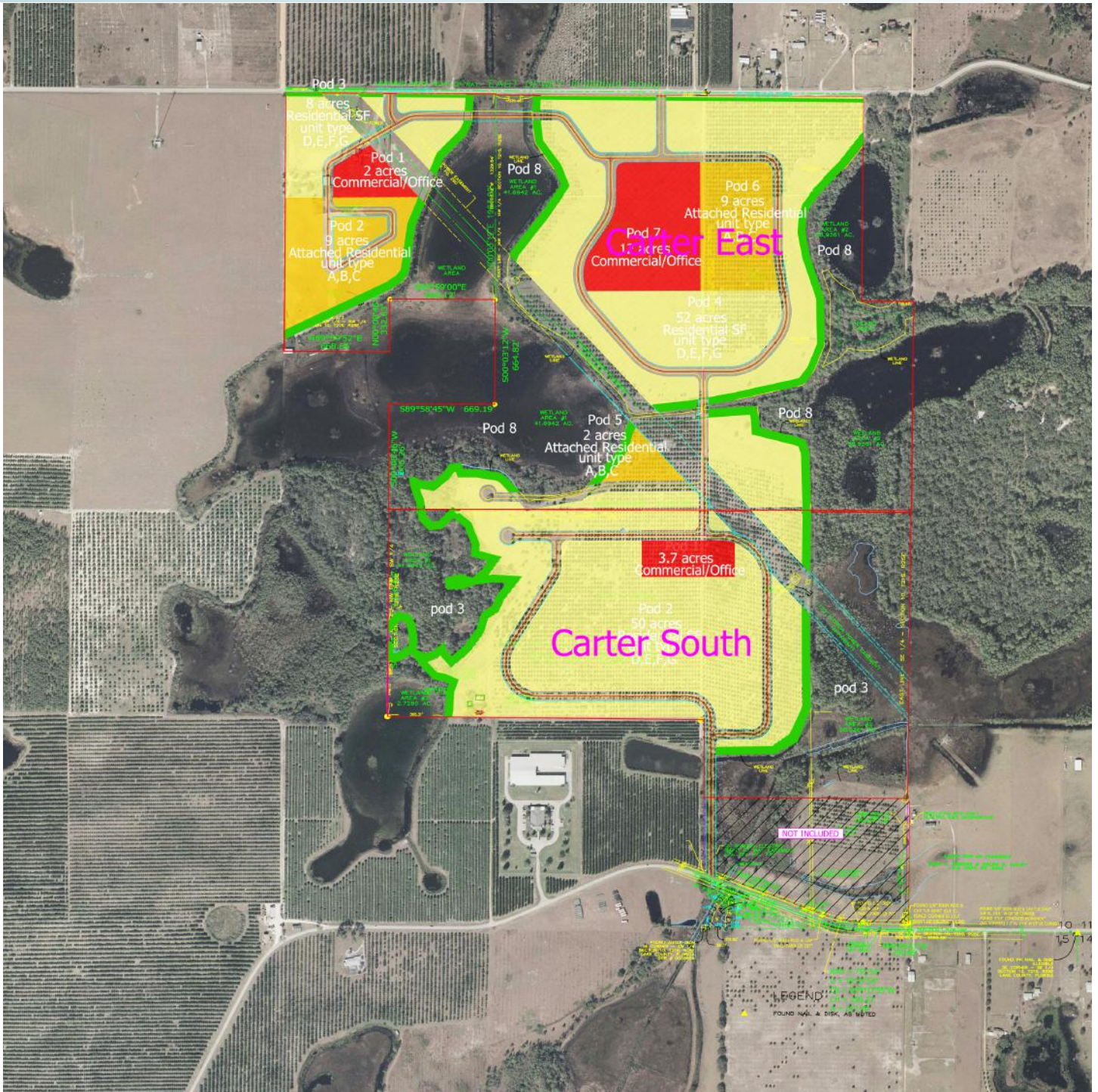
Maury L. Carter & Associates, Inc.
407-422-3144 | www.maurycarter.com



RESIDENTIAL DEVELOPMENT LAND

345± acres

Lake County, FL



— Commercial Real Estate Investments | Management | Brokerage | Development | Land

Maury L. Carter & Associates, Inc.
407-422-3144 | www.maurycarter.com



RESIDENTIAL DEVELOPMENT LAND

345± acres

Lake County, FL

CARTER EAST

Pod	Use	Phase	Acreage	Residential Units	Floor Area Office	Floor Area Commercial
Pod 1	Commercial/Office	Phase 1	2±		5,000	15,000
Pod 2	Attached Residential	Phase 1	9 ±	117		
Pod 3	Residential SF	Phase 1	8±	54		
Pod 4	Residential SF	Phase 2	52	260		
Pod 5	Attached Residential	Phase 2	2	26		
Pod 6	Attached Residential	Phase 3	9	117		
Pod 7	Commercial/Office	Phase 3	12		51,000	65,000
Pod 8	Parks/Open Space/Buffers	All Phases	91.1 ±*			
WET	Wetlands		69.5 ±			
Totals			205.2±	574	56,000	80,000

* open space includes internal pod open space pocket parks, wetlands, etc.

Gross Land Area = 205.2± acres

Net Land Area = 135.7 acres (205.2 acres total - 69.5 acres wetlands and open water)

Minimum Open Space = 41.04± acres (20% of gross land area)

Total residential units = 574

Single Family Residential 314 units (55% of total residential units) **Attached Residential 260 units** (45% of total residential units)

Comm/Office 20 acres = 15% of net land area (Minimum commercial acreage 6.8 acres (5%), Maximum commercial acreage 33.9 (25%))

Residential 80 acres = 59% of net land area (Minimum residential acreage 67.85 acres (50%), Maximum residential acreage 108.6 acres (80%))

Public square 6.8 acres = 5% of net land area (included in recreation and open space)

CARTER SOUTH

Sort	Pod	Use	Phase	Acreage	Residential Units	Floor Area Office	Floor Area Commercial/Office	Floor Area Civic
1	Pod 1	Commercial/Office	Phase 2	3.7±		5,000	15,000	4,000
5	Pod 2	Residential SF	Phase 1	50±	250			
13	Pod 3	Parks/Open Space/Buffers	All Phases	51.6 ±*				
14	WET	Wetlands		42 ±				
	Totals			115.7±	250	5,000	15,000	4,000

* open space includes internal pod open space pocket parks, wetlands, etc.

Gross Land Area = 115.7± acres

Net Land Area = 74 acres (115.7 acres total - 42 acres wetlands and open water)

Minimum Open Space = 23.14± acres (20% of gross land area)

Total residential units = 250

Single Family Residential 250 units (100% of total residential units) **Attached Residential 0 units** (0% of total residential units)

Comm/Office 3.7 acres = 5% of net land area (Minimum commercial acreage 3.7 acres (5%), Maximum commercial acreage 18.5 (25%))

Residential 50 acres = 67% of net land area (Minimum residential acreage 37 acres (50%), Maximum residential acreage 59.2 acres (80%))

Public square 3.7 acres = 5% of net land area (included in recreation and open space)

— Commercial Real Estate Investments | Management | Brokerage | Development | Land

Maury L. Carter & Associates, Inc.

407-422-3144 | www.maurycarter.com

