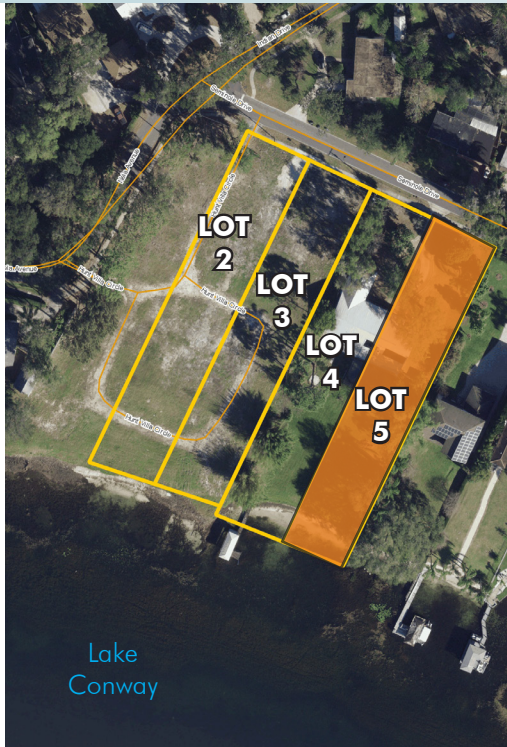


LAKEFRONT RESIDENTIAL LAND/LOTS

4 Lots

Orange County, FL

**PRICE
REDUCED**



LOCATION

Nela Avenue and Seminole Drive in Belle Isle, Florida

PRICE - 16% PRICE REDUCTION

NOW: \$500,000 per lot

WAS: ~~\$599,000~~ per lot

BULK PRICING: \$1,800,000 or \$450,000/lot

LOT 5 - UNDER CONTRACT

ZONING

R-1-AA

ROAD FRONTAGE

Nela Avenue and/or Seminole Drive

DESCRIPTION

ATTENTION RESIDENTIAL DEVELOPERS...THIS WON'T LAST! Excellent development site on the Conway chain of lakes offering beautiful views of Lake Conway within a short distance from city amenities. This site is located approximately 10 minutes from Orlando International Airport, 20 minutes to Downtown Orlando and 25 minutes from Walt Disney World and the attractions. Extensive economic activity in Orange County make this prime property for residential development. Strong economic growth is expected to continue in the region.

Natural elements give this site incredible aesthetic appeal, featuring picturesque lakefront views of Lake Conway, with frontage along Lake Conway.

Offering subject to errors, omission, prior sale or withdrawal without notice.

RESIDENTIAL LOTS

— Commercial Real Estate Investments | Management | Brokerage | Development | Land

Maury L. Carter & Associates, Inc.
407-422-3144 | www.maurycarter.com

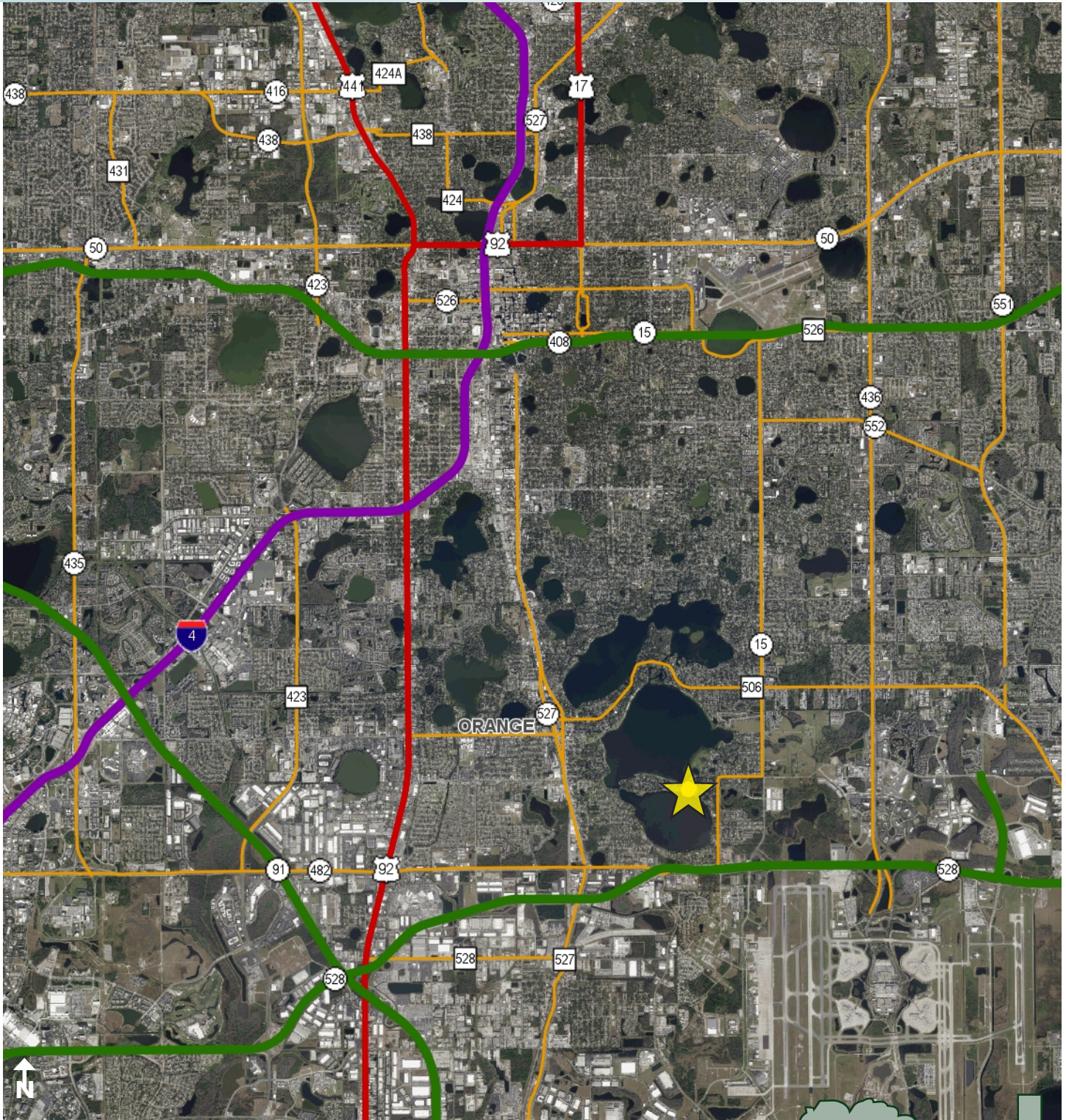


LAKEFRONT RESIDENTIAL LAND/LOT

4 Lots

Orange County, FL

**PRICE
REDUCED**



LOCATION MAP

— Commercial Real Estate Investments | Management | Brokerage | Development | Land

Maury L. Carter & Associates, Inc.
407-422-3144 | www.maurycarter.com

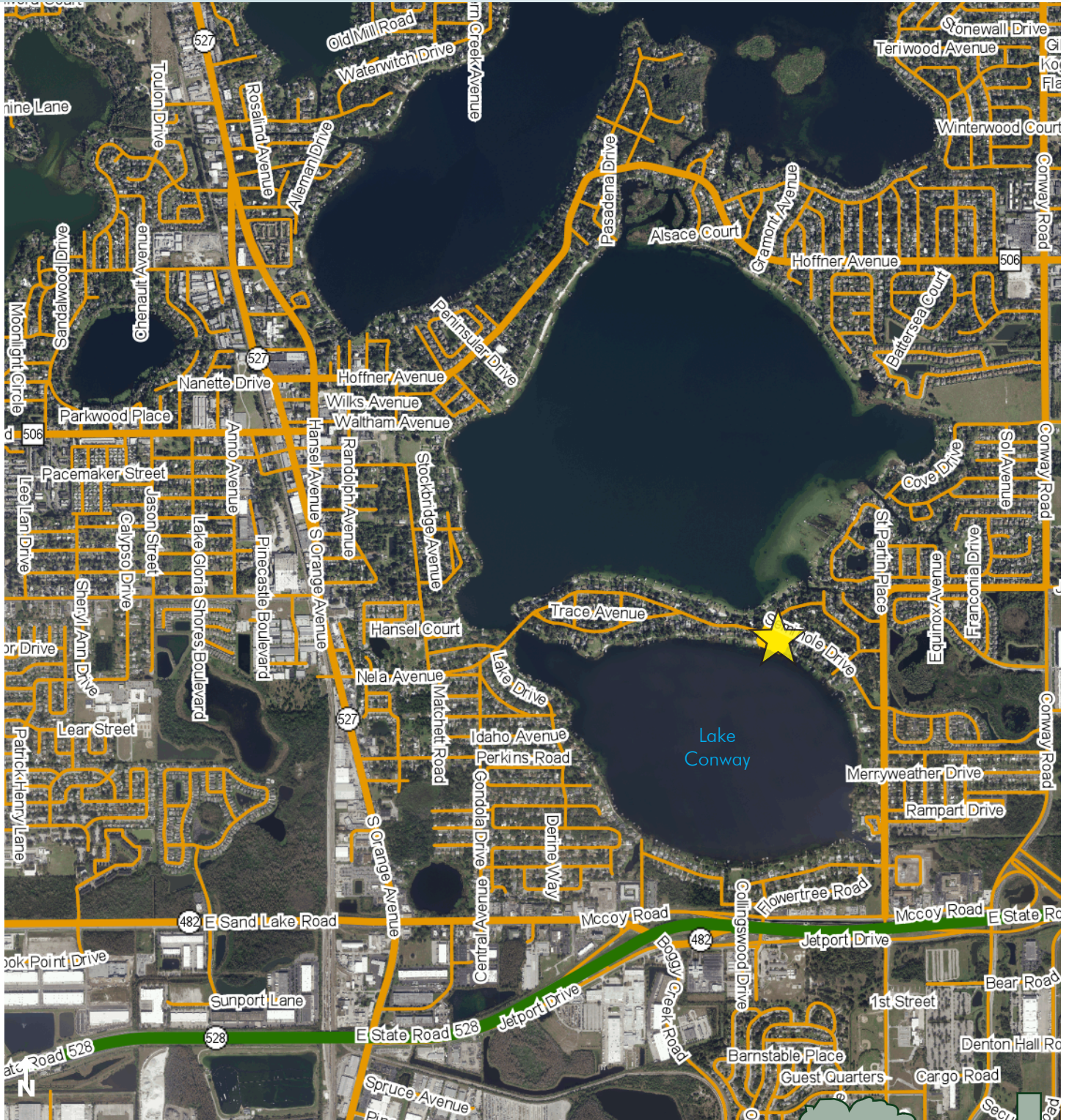


LAKEFRONT RESIDENTIAL LAND/LOT

4 Lots

Orange County, FL

**PRICE
REDUCED**



REGIONAL MAP

— Commercial Real Estate Investments | Management | Brokerage | Development | Land

Maury L. Carter & Associates, Inc.
407-422-3144 | www.maurycarter.com



LAKEFRONT RESIDENTIAL LAND/LOT

4 Lots

Orange County, FL

**PRICE
REDUCED**



PROPERTY MAP

— Commercial Real Estate Investments | Management | Brokerage | Development | Land

Maury L. Carter & Associates, Inc.
407-422-3144 | www.maurycarter.com

