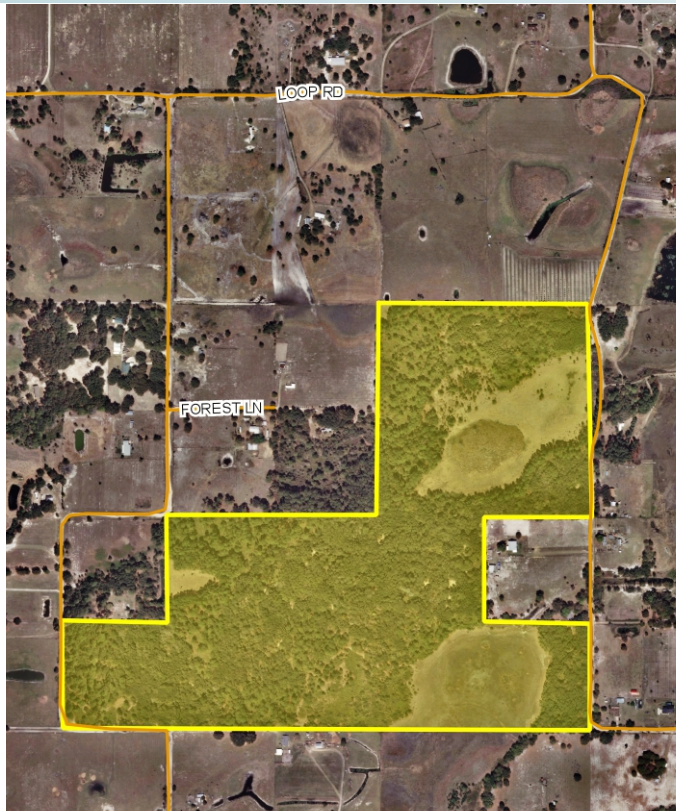


LAKE COUNTY LOOP ROAD

120± acres

Lake County, FL



LOCATION/DESCRIPTION

One mile west of Highway 33 and 1/2 mile north of Austin Merritt Road. Bounded on the east and west by Loop Road. Ideal for recreation, country living, equestrian estate, cattle ranching, etc.

SIZE - Seller Will Divide

120± total acres

See Page 2 for Pricing & Acreage Break-down

BULK PRICE

\$600,000 (\$5,000/acre)

SELLER WILL CONSIDER OWNER FINANCING

ZONING/FUTURE LAND USE

Zoning: Agricultural (1 du/5 acres)

FLU: Rural (1 du/5 acres)

ROAD FRONTAGE

1,800'± on Loop Road

1,200'± on East Loop Road

Offering subject to errors, omission, prior sale or withdrawal without notice.

LAND FOR SALE

— Commercial Real Estate Investments | Management | Brokerage | Development | Land

Maury L. Carter & Associates, Inc.

407-422-3144 | www.maurycarter.com

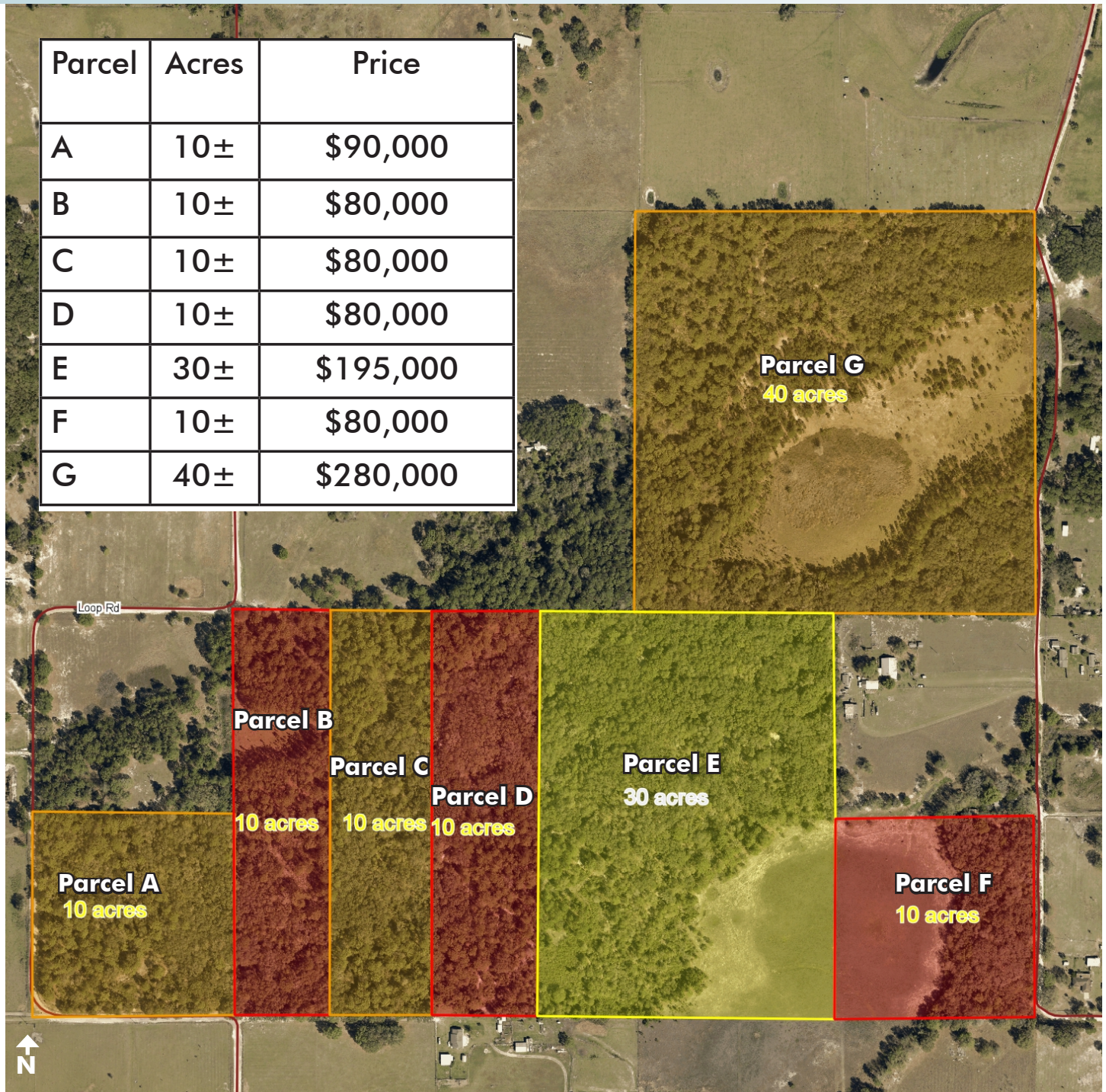


LAKE COUNTY LOOP ROAD

120± acres

Lake County, FL

Parcel	Acres	Price
A	10±	\$90,000
B	10±	\$80,000
C	10±	\$80,000
D	10±	\$80,000
E	30±	\$195,000
F	10±	\$80,000
G	40±	\$280,000



PARCEL BREAKDOWN

— Commercial Real Estate Investments | Management | Brokerage | Development | Land

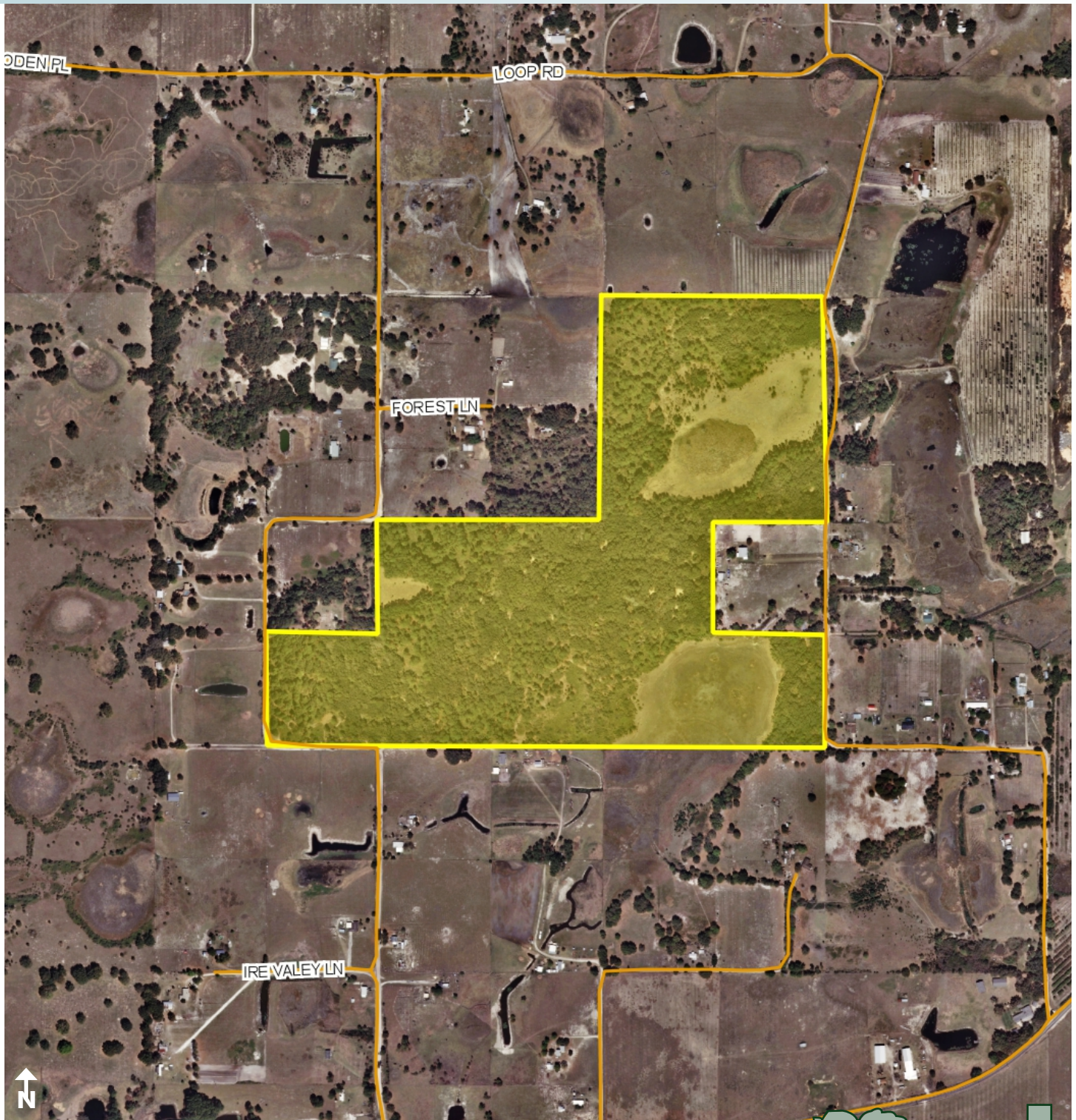
Maury L. Carter & Associates, Inc.
407-422-3144 | www.maurycarter.com



LAKE COUNTY LOOP ROAD

120± acres

Lake County, FL



PROPERTY MAP

— Commercial Real Estate Investments | Management | Brokerage | Development | Land

Maury L. Carter & Associates, Inc.
407-422-3144 | www.maurycarter.com



LAKE COUNTY LOOP ROAD

120± acres

Lake County, FL



LOCATION MAP

— Commercial Real Estate Investments | Management | Brokerage | Development | Land

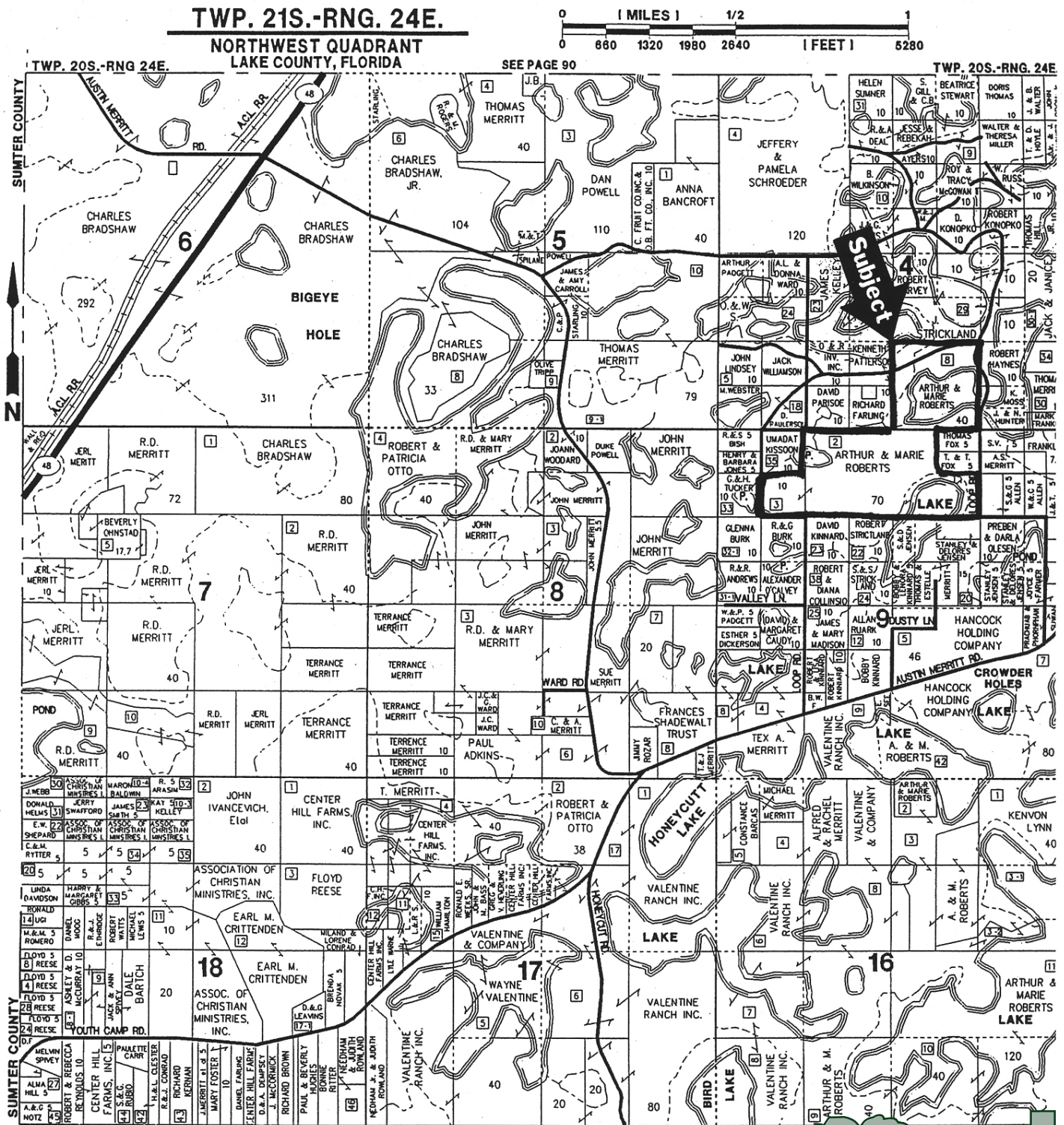
Maury L. Carter & Associates, Inc.
407-422-3144 | www.maurycarter.com



LAKE COUNTY LOOP ROAD

120± acres

Lake County, FL



— Commercial Real Estate Investments | Management | Brokerage | Development | Land —

Maury L. Carter & Associates, Inc.

407-422-3144 | www.maurycarter.com



120± acres
Lake County, FL



Maury L. Carter & Associates, Inc.
407-422-3144 | www.maurycarter.com