

PRIME DEVELOPMENT LAND

10.3± acres

St. Cloud, Osceola County, FL



DESCRIPTION

10.3 +/- acres located in the hottest area of Osceola County. This property is unique due to the location on Michigan Ave. within walking distance to top rated Michigan Ave Elementary School, St. Cloud Middle School and St. Cloud High School and 1 mile to the new Neighborhood Walmart on Canoe Creek and Nolte Road. Close proximity to Downtown, Lynx stops, FL Turnpike and St. Cloud Hospital. Perfect for townhomes or single-family residences.

LOCATION

Michigan Avenue and Ferti Road in St. Cloud, FL.

SIZE

10.3± acres

PRICE

\$1,350,000

ZONING/FUTURE LAND USE (FLU)

Low Density Residential (up to 8 units/acre)

PARCEL ID

13-26-30-4950-0001-0070

13-26-30-4950-0001-0080

UTILITIES

Electric - OUC

Water/Sewer - City of St. Cloud

DEVELOPMENT LAND

— Commercial Real Estate Investments | Management | Brokerage | Development | Land —

Maury L. Carter & Associates, Inc.

407-422-3144 | www.maurycarter.com

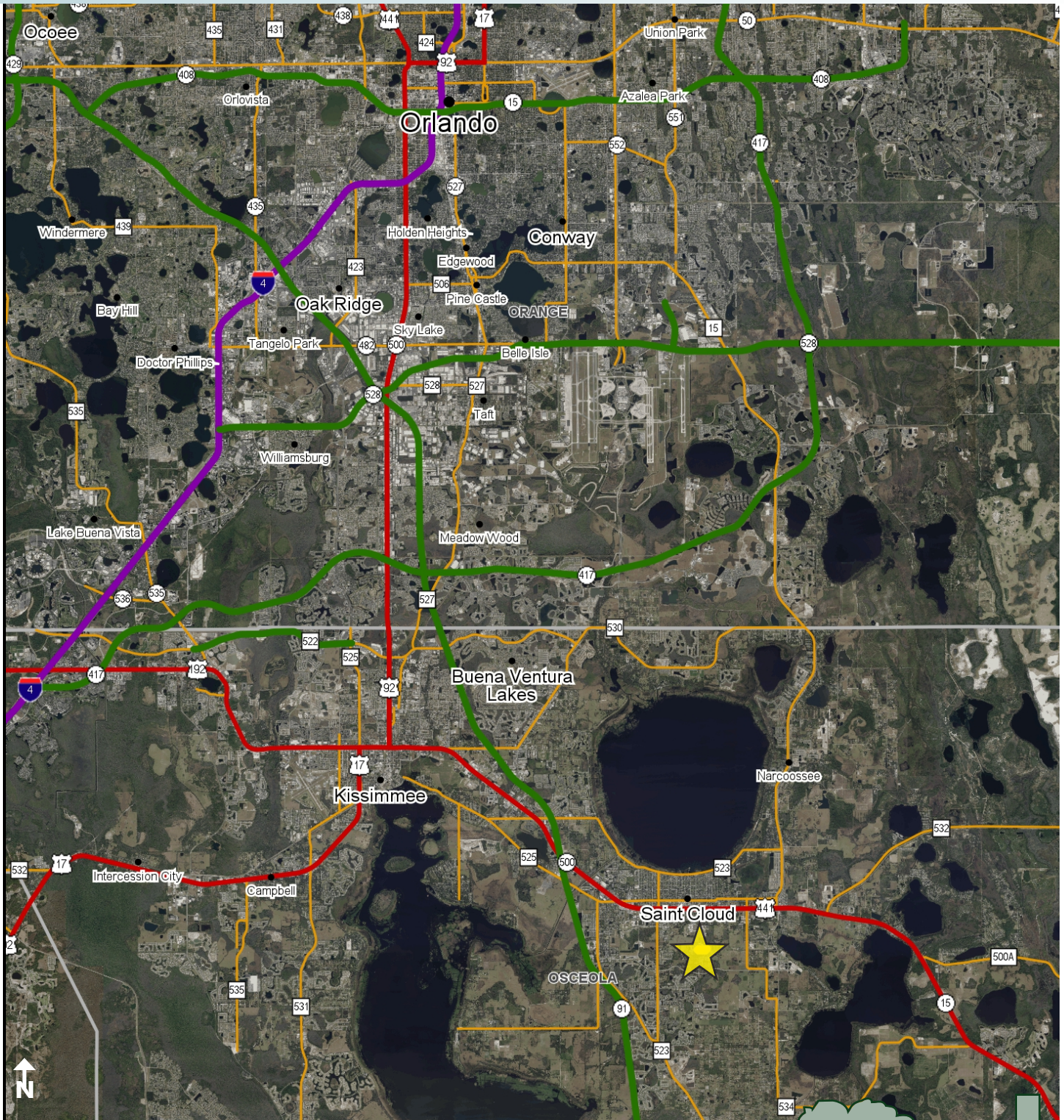
Offering subject to errors, omission, prior sale or withdrawal without notice.



PRIME DEVELOPMENT LAND

10.3± acres

St. Cloud, Osceola County, FL



LOCATION MAP

— Commercial Real Estate Investments | Management | Brokerage | Development | Land

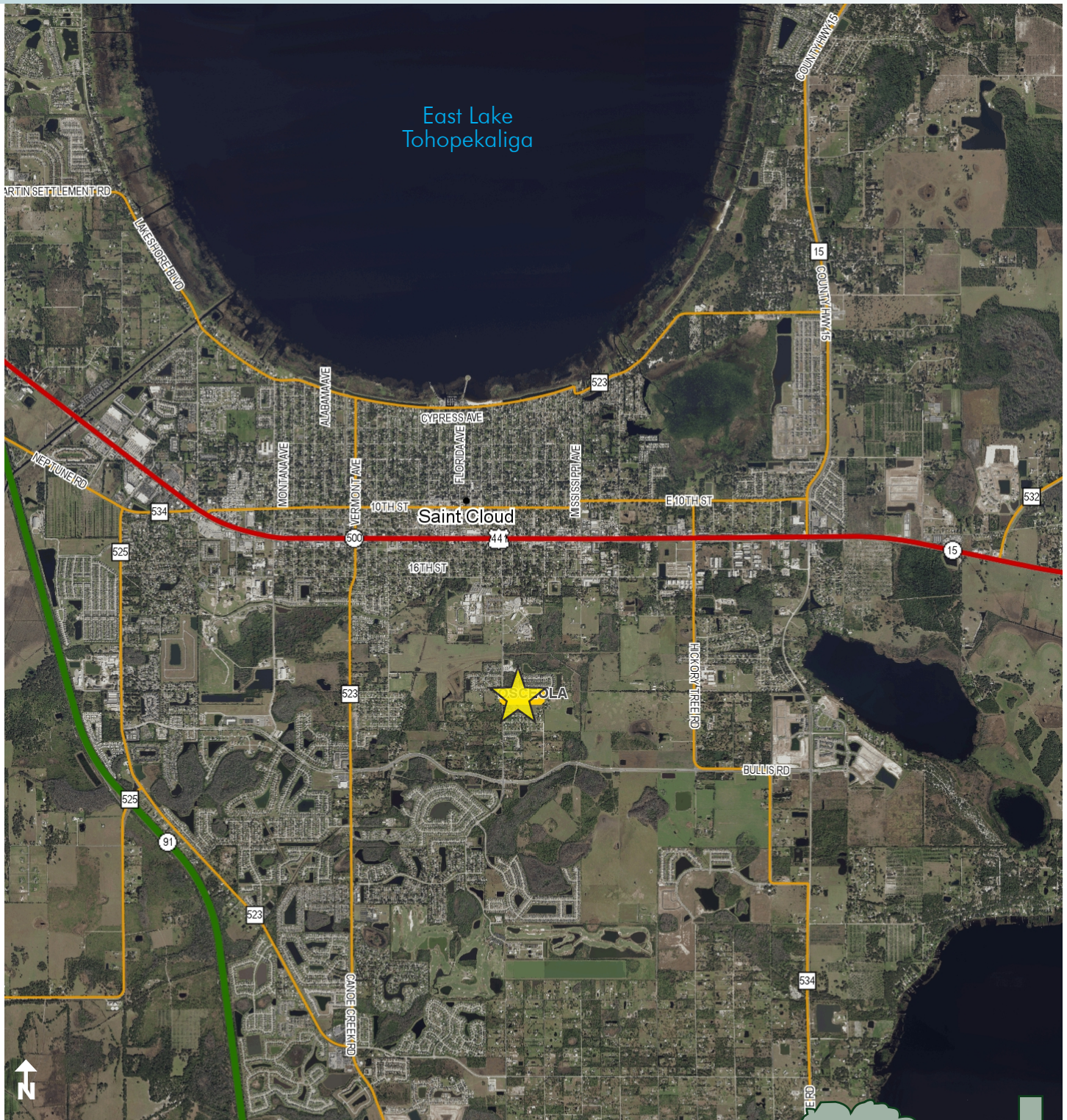
Maury L. Carter & Associates, Inc.
407-422-3144 | www.maurycarter.com



PRIME DEVELOPMENT LAND

10.3± acres

St. Cloud, Osceola County, FL



REGIONAL MAP

— Commercial Real Estate Investments | Management | Brokerage | Development | Land

Maury L. Carter & Associates, Inc.
407-422-3144 | www.maurycarter.com



PRIME DEVELOPMENT LAND

10.3± acres

St. Cloud, Osceola County, FL



PROPERTY MAP

— Commercial Real Estate Investments | Management | Brokerage | Development | Land

Maury L. Carter & Associates, Inc.
407-422-3144 | www.maurycarter.com

