

PRIME DEVELOPMENT LAND ON US HWY 27

22.23± acres • Lake County, FL

**PRICE
REDUCED**



LOCATION

Located 2.3 miles north of I-75 Turnpike on US Hwy 27 and 1 mile south of Leesburg city limits.

SIZE

22.23± acres

PRICE

20% PRICE REDUCTION

NOW: \$1,200,000

~~WAS: \$1,500,000~~

ZONING/FLU

Rural Transition. Zoning change may allow commercial on property fronting Hwy 27.

PARCEL ID

36-20-24-0001-000-0020

ROAD FRONTAGE

320 +/- feet on Highway 27 and over 1,500 feet on Windmill Road

DESCRIPTION

22.23 +/- acre in planted pines located on US Hwy 27 in Lake County Florida. This property appears to be all high and dry with significant road frontage and accessibility. This tract offers many potential uses in the fast growing area of Lake County.

Offering subject to errors, omission, prior sale or withdrawal without notice.

LAND FOR SALE

— Commercial Real Estate Investments | Management | Brokerage | Development | Land —

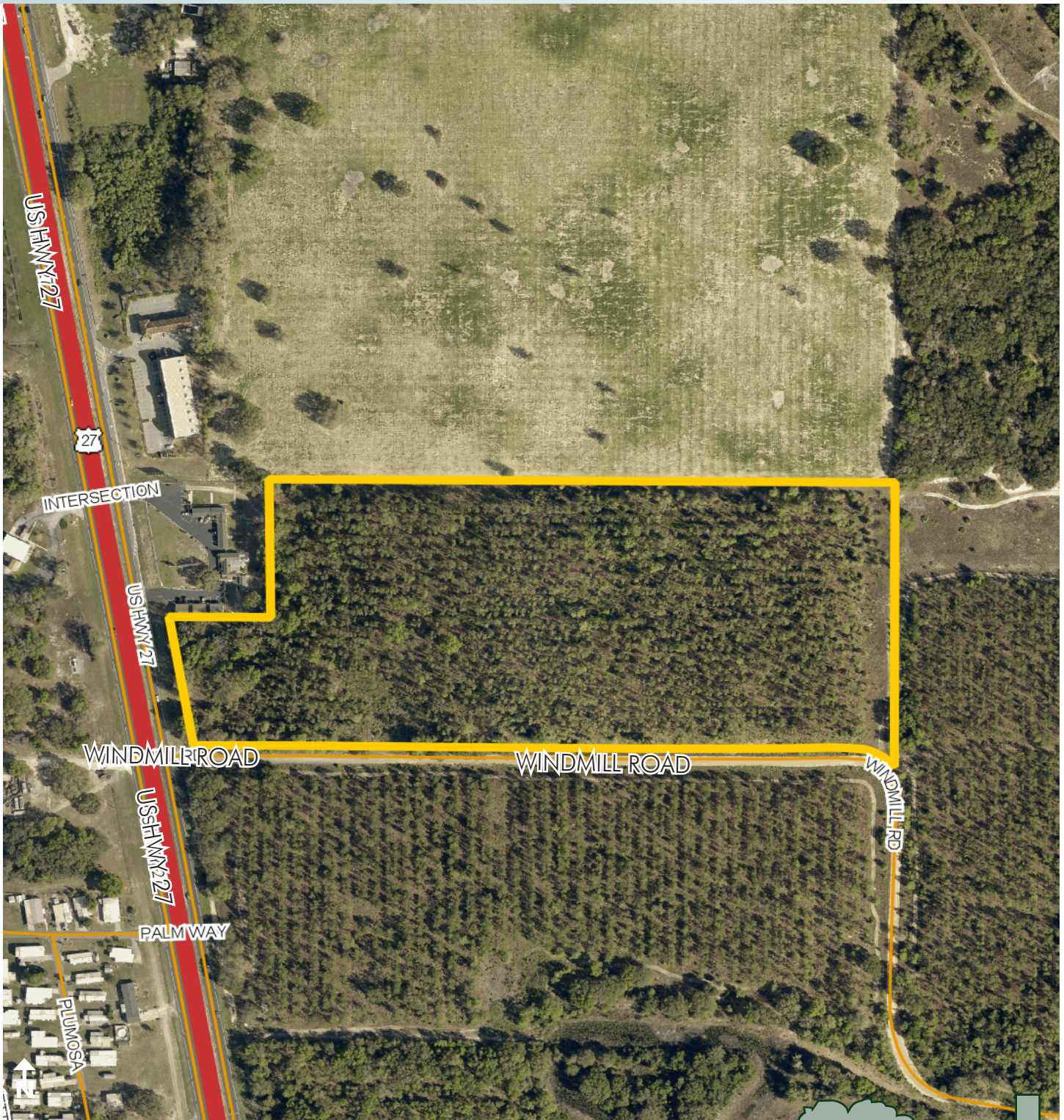
Maury L. Carter & Associates, Inc.
407-422-3144 | www.maurycarter.com



PRIME DEVELOPMENT LAND ON US HWY 27

22.23± acres • Lake County, FL

**PRICE
REDUCED**



PROPERTY MAP

— Commercial Real Estate Investments | Management | Brokerage | Development | Land

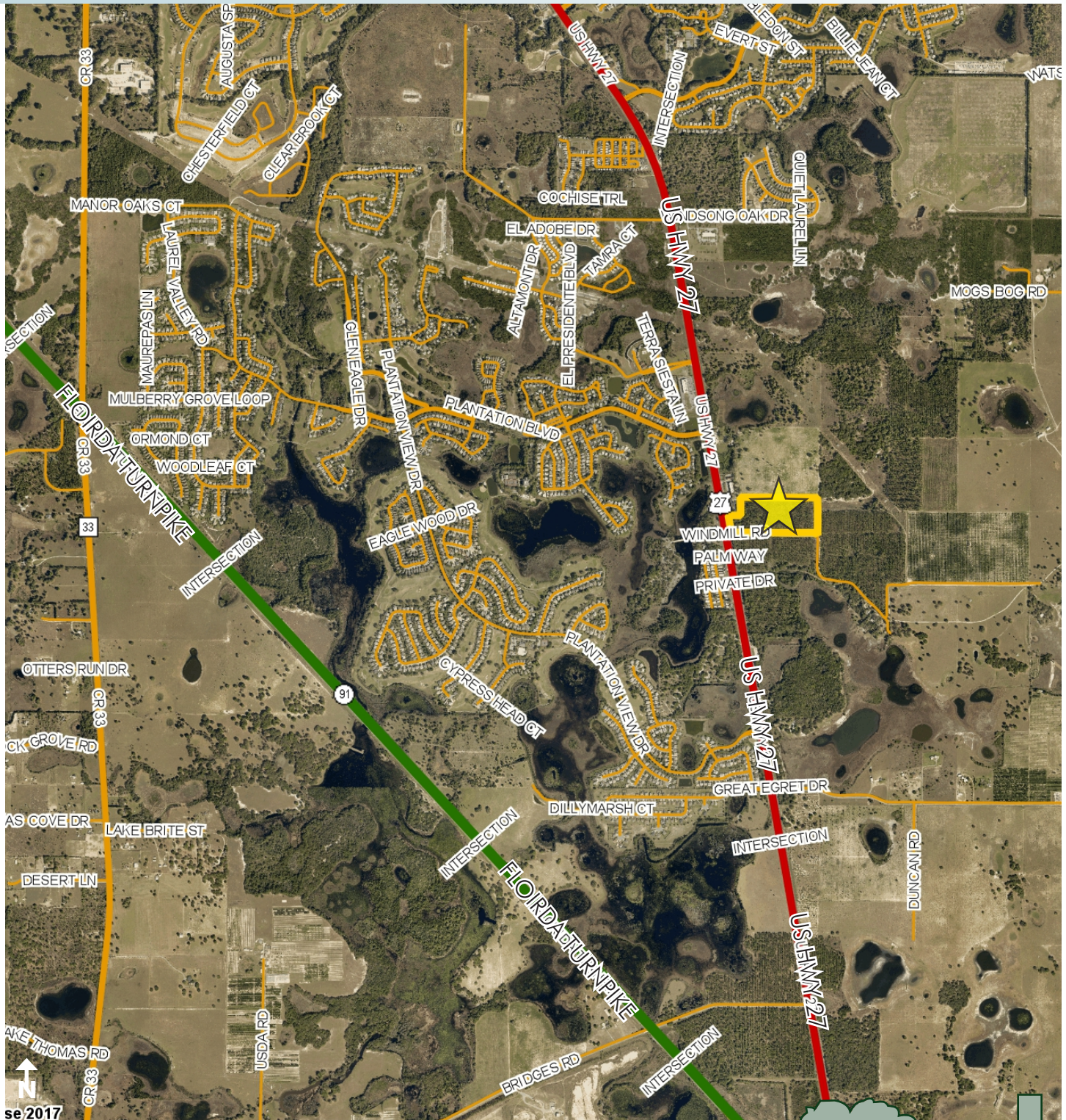
Maury L. Carter & Associates, Inc.
407-422-3144 | www.maurycarter.com



PRIME DEVELOPMENT LAND ON US HWY 27

22.23± acres • Lake County, FL

**PRICE
REDUCED**



REGIONAL MAP

— Commercial Real Estate Investments | Management | Brokerage | Development | Land

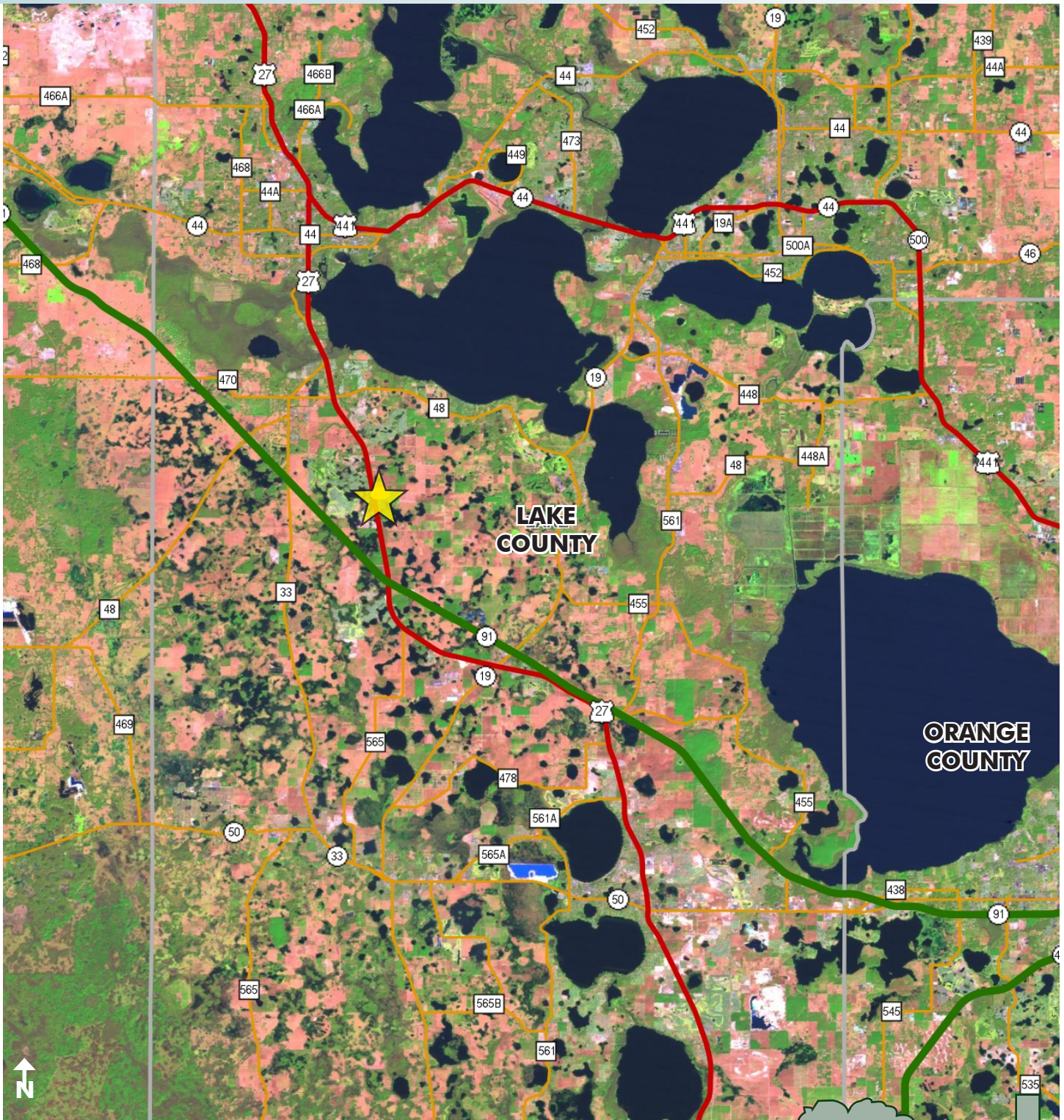
Maury L. Carter & Associates, Inc.
407-422-3144 | www.maurycarter.com



PRIME DEVELOPMENT LAND ON US HWY 27

22.23± acres • Lake County, FL

**PRICE
REDUCED**



LOCATION MAP

— Commercial Real Estate Investments | Management | Brokerage | Development | Land

Maury L. Carter & Associates, Inc.
407-422-3144 | www.maurycarter.com

