

PRIME DEVELOPMENT LAND

28± acres

Osceola County, FL



DESCRIPTION/LOCATION

BUILDERS AND DEVELOPERS TAKE NOTICE!!! This property is located in the heart of Osceola County's impressive and expansive growth corridor. Major single family residential and commercial developments are occurring in the immediate, as well as the regional, areas. This is a hot property for single family residential development. This property has historically been operated as a citrus grove, but is now ripe for single family residential developers to turn it into a beautiful new community.

Osceola County, FL – Nova Road NE of the City of St. Cloud

SIZE

28± acres

PRICE

\$1,820,000 (\$65,000/acre)

ZONING/FLU

Zoning: AC - Agricultural Conservation
FLU: LDR - Low Density Residential. Up to 3 to 8 units/acre

ROAD FRONTAGE

Nearly 300' of frontage on Nova Road and approximately 1,170' on Pine Grove Road

Offering subject to errors, omission, prior sale or withdrawal without notice.

DEVELOPMENT LAND

— Commercial Real Estate Investments | Management | Brokerage | Development | Land

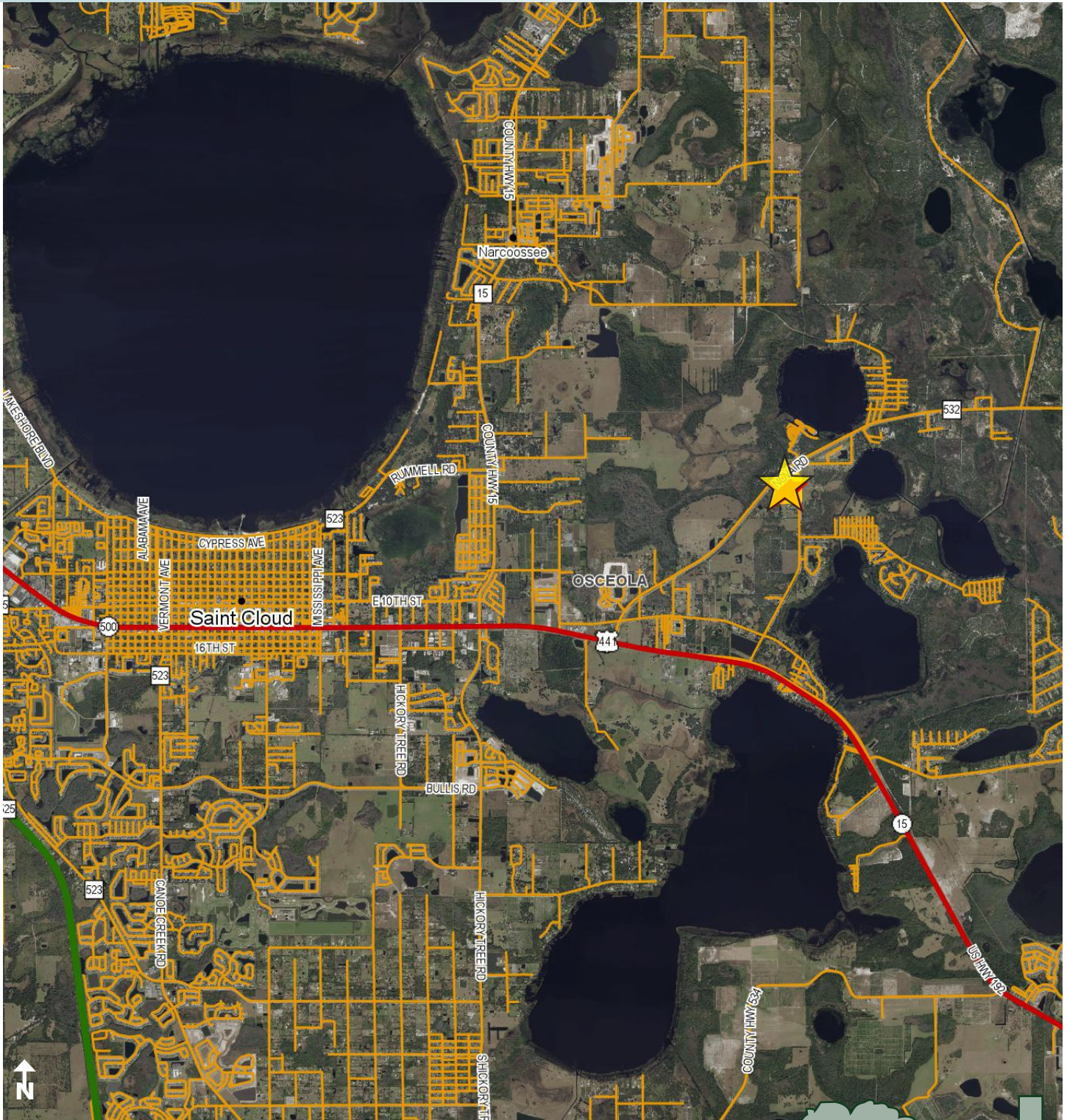
Maury L. Carter & Associates, Inc.
407-422-3144 | www.maurycarter.com



PRIME DEVELOPMENT LAND

28± acres

Osceola County, FL



LOCATION MAP

— Commercial Real Estate Investments | Management | Brokerage | Development | Land

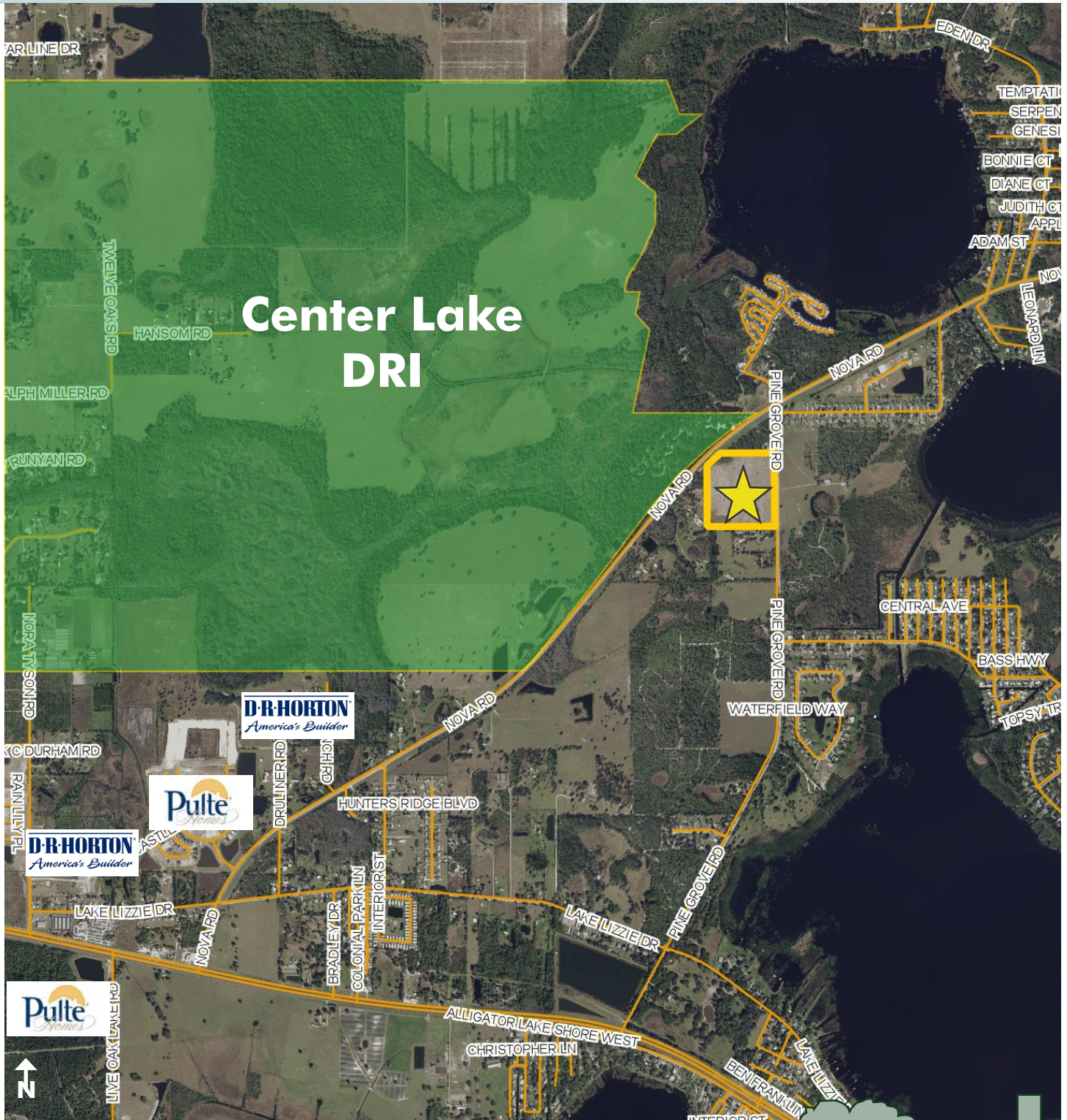
Maury L. Carter & Associates, Inc.
407-422-3144 | www.maurycarter.com



PRIME DEVELOPMENT LAND

28± acres

Osceola County, FL



VICINITY MAP

— Commercial Real Estate Investments | Management | Brokerage | Development | Land

Maury L. Carter & Associates, Inc.
407-422-3144 | www.maurycarter.com

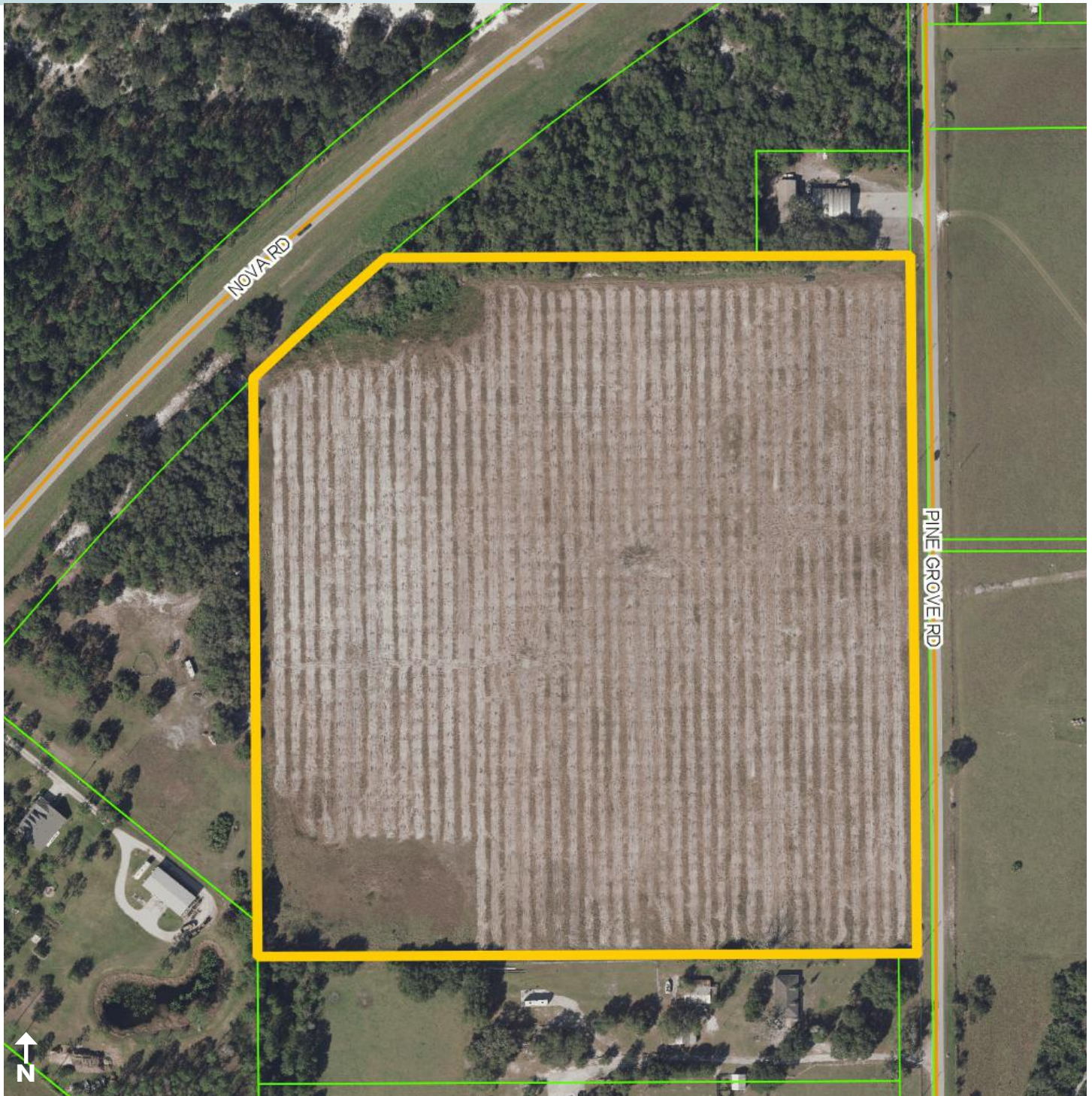


Maury L. Carter & Associates, Inc.SM
Licensed Real Estate Broker

PRIME DEVELOPMENT LAND

28± acres

Osceola County, FL



PROPERTY MAP

— Commercial Real Estate Investments | Management | Brokerage | Development | Land

Maury L. Carter & Associates, Inc.
407-422-3144 | www.maurycarter.com

