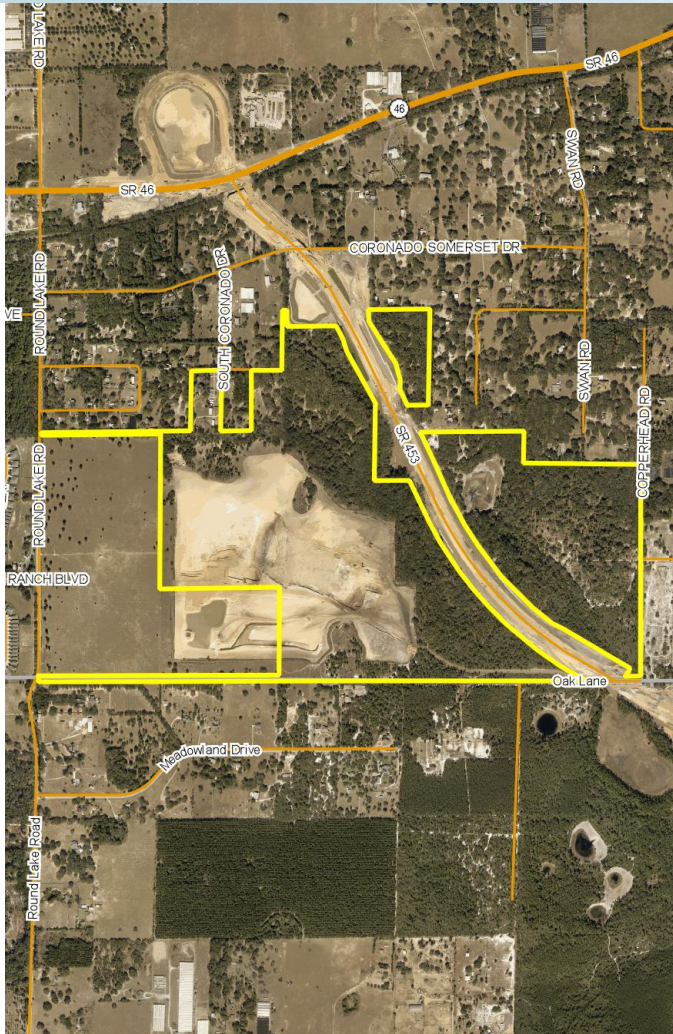


COMMERCIAL & RESIDENTIAL LAND

298± acres

Lake County, FL



LOCATION/DESCRIPTION

Residential and commercial development land! Located on just to the south of SR 46, in east Lake County. The Wekiva Parkway Expansion (2020), the final leg in Orlando's beltway connecting to Interstate 4, will create direct and immediate access to the site by widening SR 46 and creating an interchange north to the subject property. The site is just south of the Mount Dora Employment Center, a hub of economic and employment growth consisting of approx. 900 acres along the Parkway expansion. The employment center is expected to create approx. 13,000 new jobs.

SIZE

298± acres

PRICE

\$23,840,000 (\$80,000/acre)

FUTURE LAND USE

Multi-family, single family, office, industrial and medical

Offering subject to errors, omission, prior sale or withdrawal without notice.

ADDITIONAL PARCEL

Additional 30 acres available to the west. Link to flyer: <https://www.maurycarter.com/wp-content/uploads/2019/07/Lake-County-Development-Land-30-Acres.pdf>

POTENTIAL DEVELOPMENT LAND

— Commercial Real Estate Investments | Management | Brokerage | Development | Land —

Maury L. Carter & Associates, Inc.

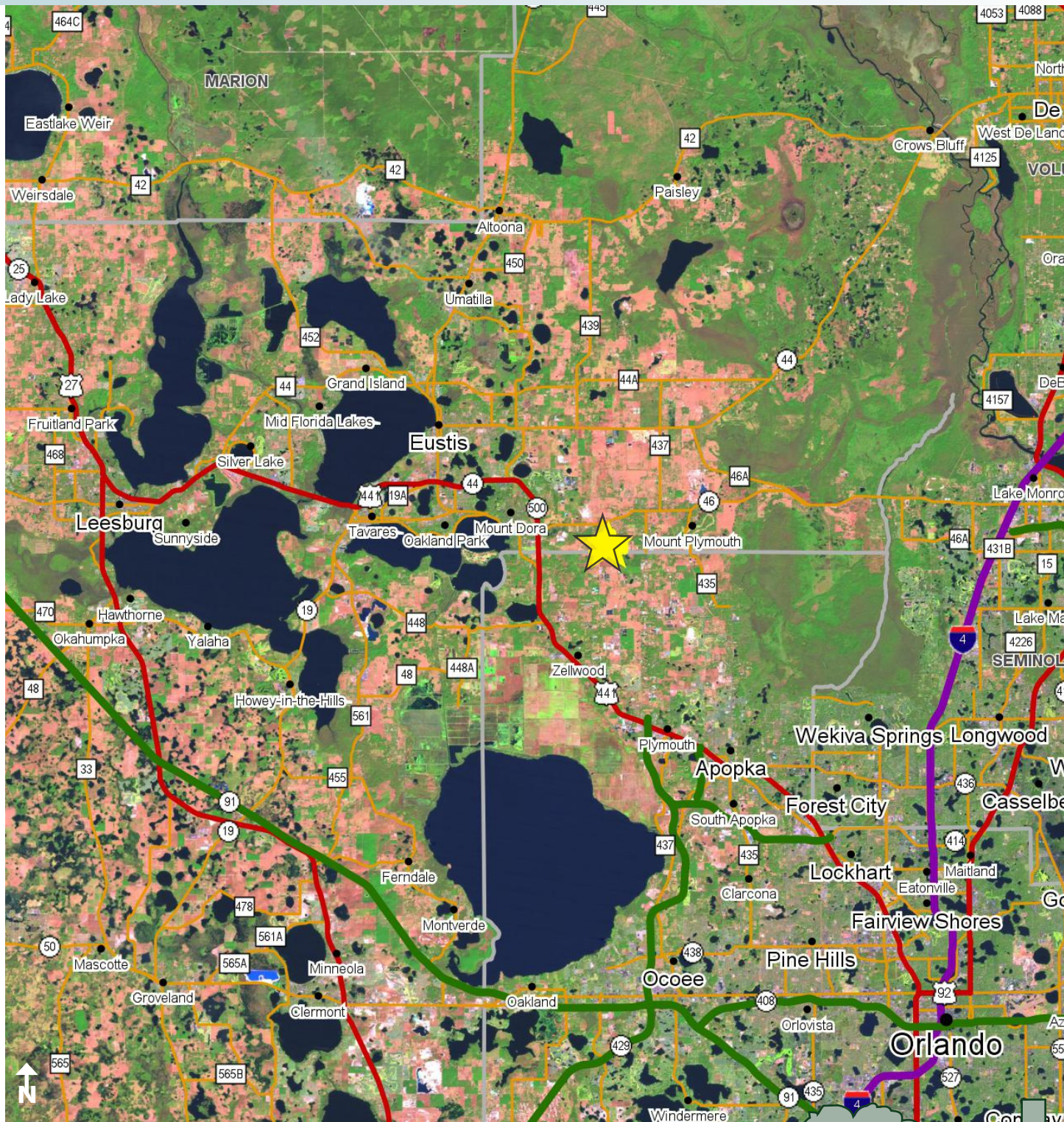
407-422-3144 | www.maurycarter.com



COMMERCIAL & RESIDENTIAL LAND

298± acres

Lake County, FL

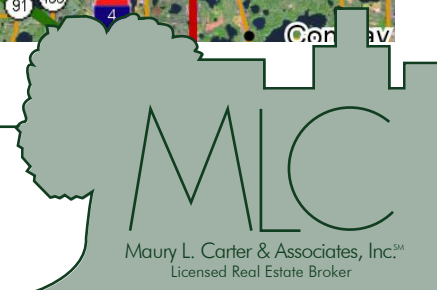


LOCATION MAP

— Commercial Real Estate Investments | Management | Brokerage | Development | Land

Maury L. Carter & Associates, Inc.

407-422-3144 | www.maurycarter.com



298± acres
Lake County, FL



Maury L. Carter & Associates, Inc.
407-422-3144 | www.maurycarter.com



298± acres
Lake County, FL



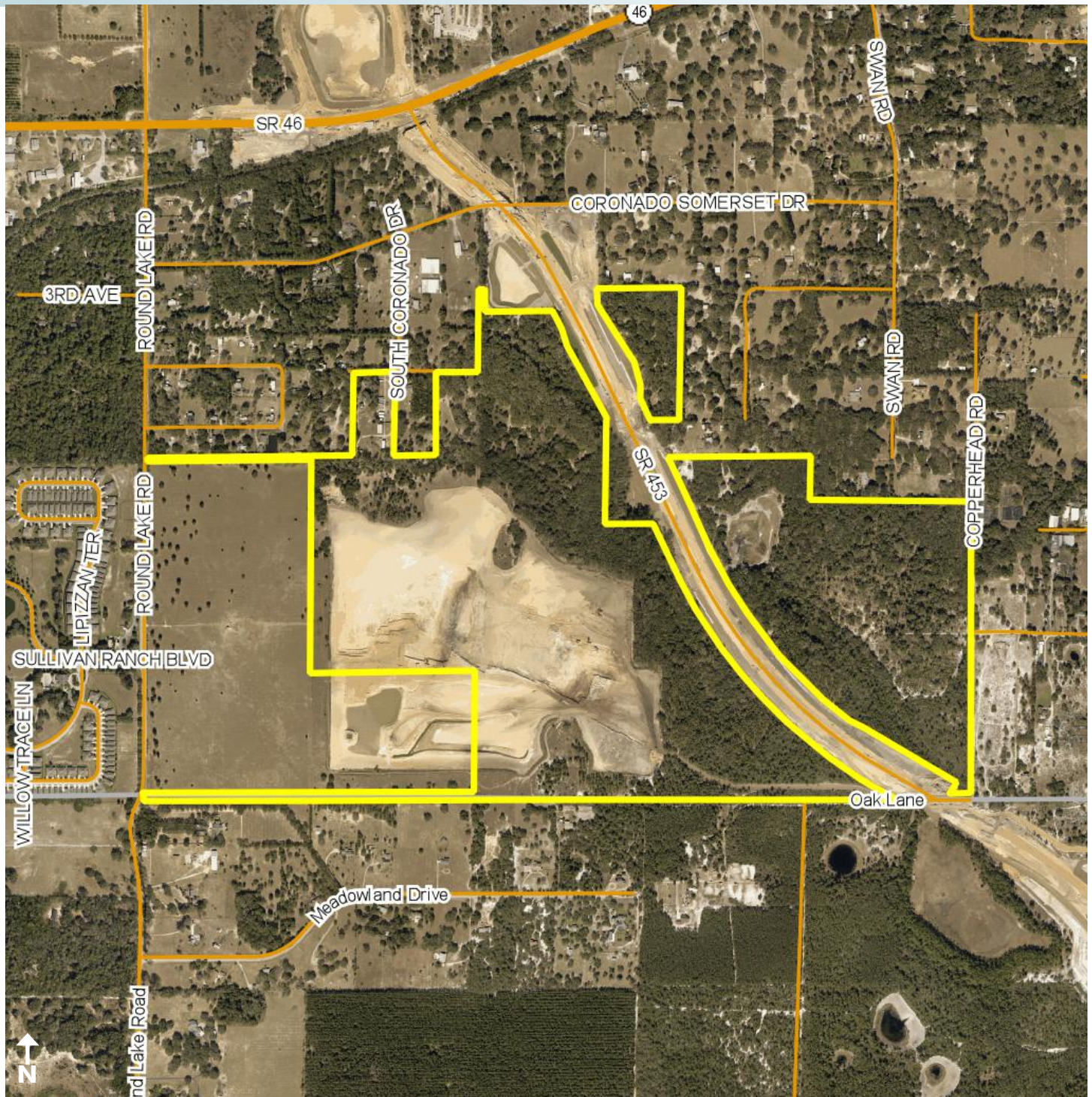
Maury L. Carter & Associates, Inc.
407-422-3144 | www.maurycarter.com



COMMERCIAL & RESIDENTIAL LAND

298± acres

Lake County, FL



PROPERTY MAP

— Commercial Real Estate Investments | Management | Brokerage | Development | Land

Maury L. Carter & Associates, Inc.
407-422-3144 | www.maurycarter.com

