

KISSIMMEE PARK OPPORTUNITY

35± acres - WILL DIVIDE
Osceola County, FL



LOCATION

Just 10 miles south of Medical City in one of the fastest growing areas of the U.S., these two tracts are located on Osceola Road near Kissimmee Park Road. Located within the Urban Growth Boundaries for Osceola County and just 15 minutes from Orlando International Airport and 30 minutes to the theme parks. Near the future construction of the Osceola Beltway and just a few minutes away from the turnpike interchange, providing access to I-4, I-95 and I-75.

SIZE/PRICE OPTIONS

Will sell together or separately:

Bulk Price for 35± acres = \$1,500,000

20± acres = \$900,000

15± acres = \$600,000

ZONING/FLU

Zoned AC; FLU - Mixed-Use

UTILITIES

Electric - OUC; well/septic (water plant is located on Kissimmee Park Road)

DESCRIPTION

Don't miss this unique investment opportunity!
15-acre and 20-acre tracts for sale in Kissimmee Park. These former orange groves are in the heart of the Edgewater and Heritage development area. They offer many opportunities to build a nice residential home or as a short-term investment with pending development coming to the area. No other tracts this size currently available in the Kissimmee Park area.

Offering subject to errors, omission, prior sale or withdrawal without notice.

LAND FOR SALE

— Commercial Real Estate Investments | Management | Brokerage | Development | Land —

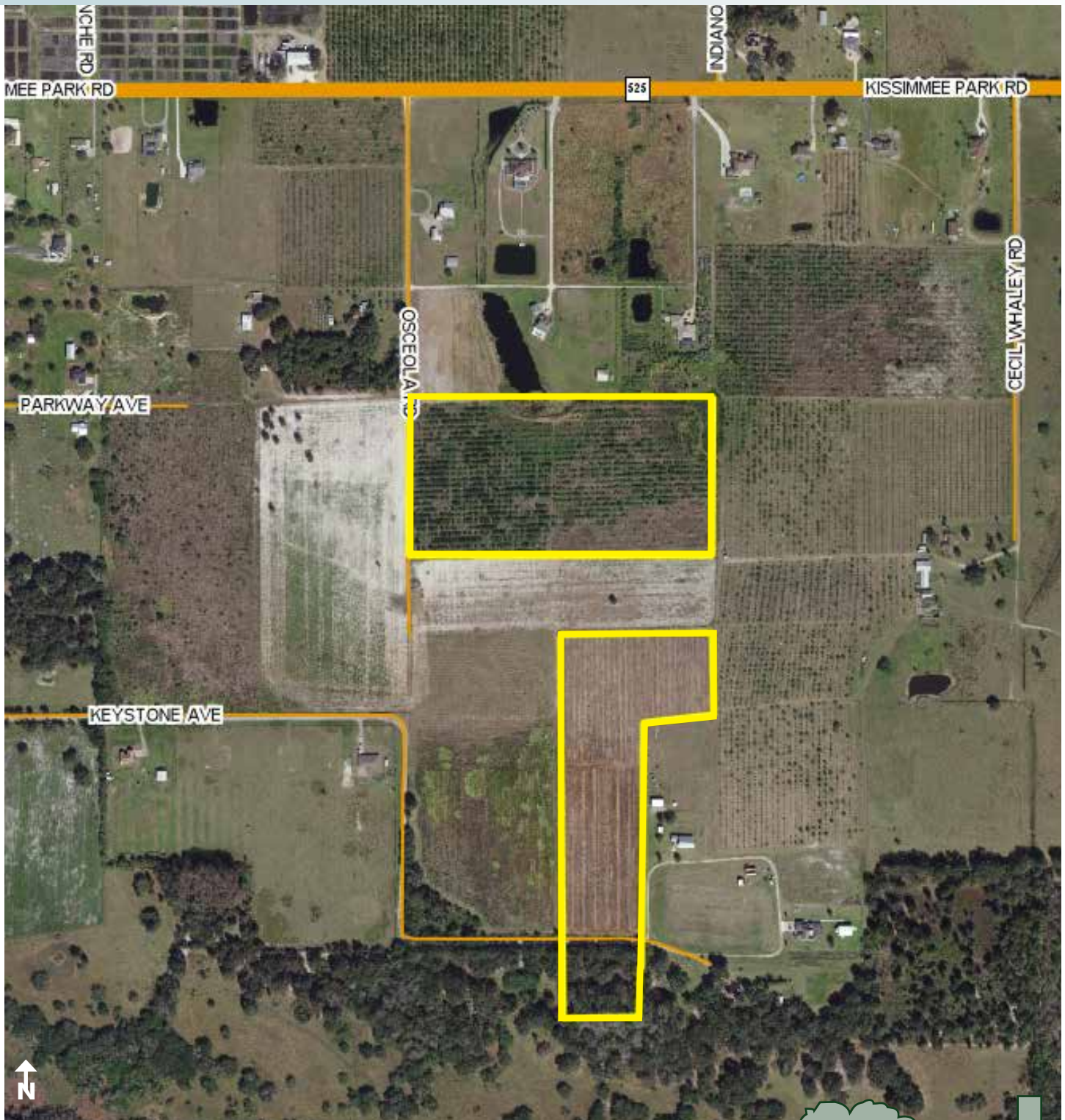
Maury L. Carter & Associates, Inc.
407-422-3144 | www.maurycarter.com



KISSIMMEE PARK OPPORTUNITY

35± acres - WILL DIVIDE

Osceola County, FL



PROPERTY MAP

— Commercial Real Estate Investments | Management | Brokerage | Development | Land

Maury L. Carter & Associates, Inc.
407-422-3144 | www.maurycarter.com



KISSIMMEE PARK OPPORTUNITY

35± acres - WILL DIVIDE

Osceola County, FL



REGIONAL MAP

— Commercial Real Estate Investments | Management | Brokerage | Development | Land

Maury L. Carter & Associates, Inc.

407-422-3144 | www.maurycarter.com



35± acres - WILL DIVIDE
Osceola County, FL

35± acres - WILL DIVIDE
Osceola County, FL



— Commercial Real Estate Investments | Management | Brokerage | Development | Land

Maury L. Carter & Associates, Inc.
407-422-3144 | www.maurycarter.com

