

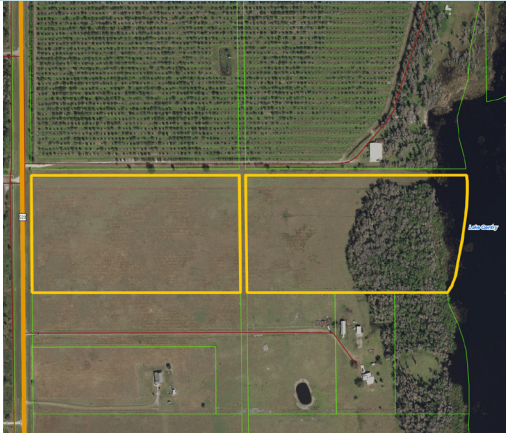
LAKE GENTRY FARMS

34.5± acres

Osceola County, FL

**UNDER
CONTRACT**

LAND FOR SALE



DESCRIPTION

This property is conveniently located just 15 minutes south of St. Cloud, FL and a short 45 minute drive to downtown Orlando. This is one of the few properties with hard frontage on Lake Gentry. The property boasts agriculture qualities with a one of a kind water feature. Come see why this can serve as your next estate property, or residential development.

SIZE

34.5± Acres

PRICE

UNDER CONTRACT

NOW: \$850,000 (WAS: \$900,000)

ZONING

Agricultural (1 unit/5 acres)

ROAD FRONTAGE

Canoe Creek Road

PARCEL ID

3-27-30-4950-0001-0650

Offering subject to errors, omission, prior sale or withdrawal without notice.



— Commercial Real Estate Investments | Management | Brokerage | Development | Land

Maury L. Carter & Associates, Inc.
407-422-3144 | www.maurycarter.com

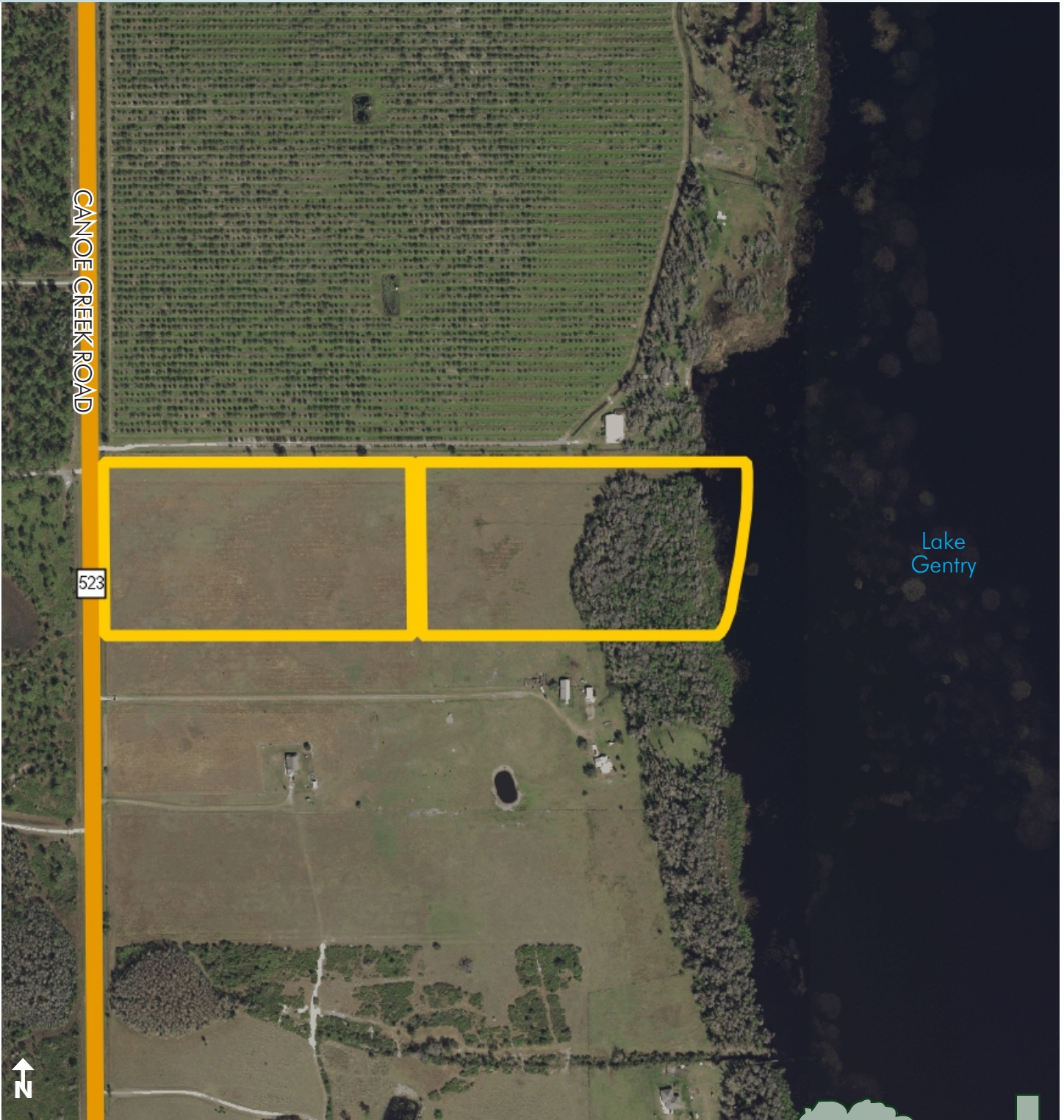


LAKE GENTRY FARMS

34.5± acres

Osceola County, FL

**UNDER
CONTRACT**



PROPERTY MAP

— Commercial Real Estate Investments | Management | Brokerage | Development | Land

Maury L. Carter & Associates, Inc.
407-422-3144 | www.maurycarter.com

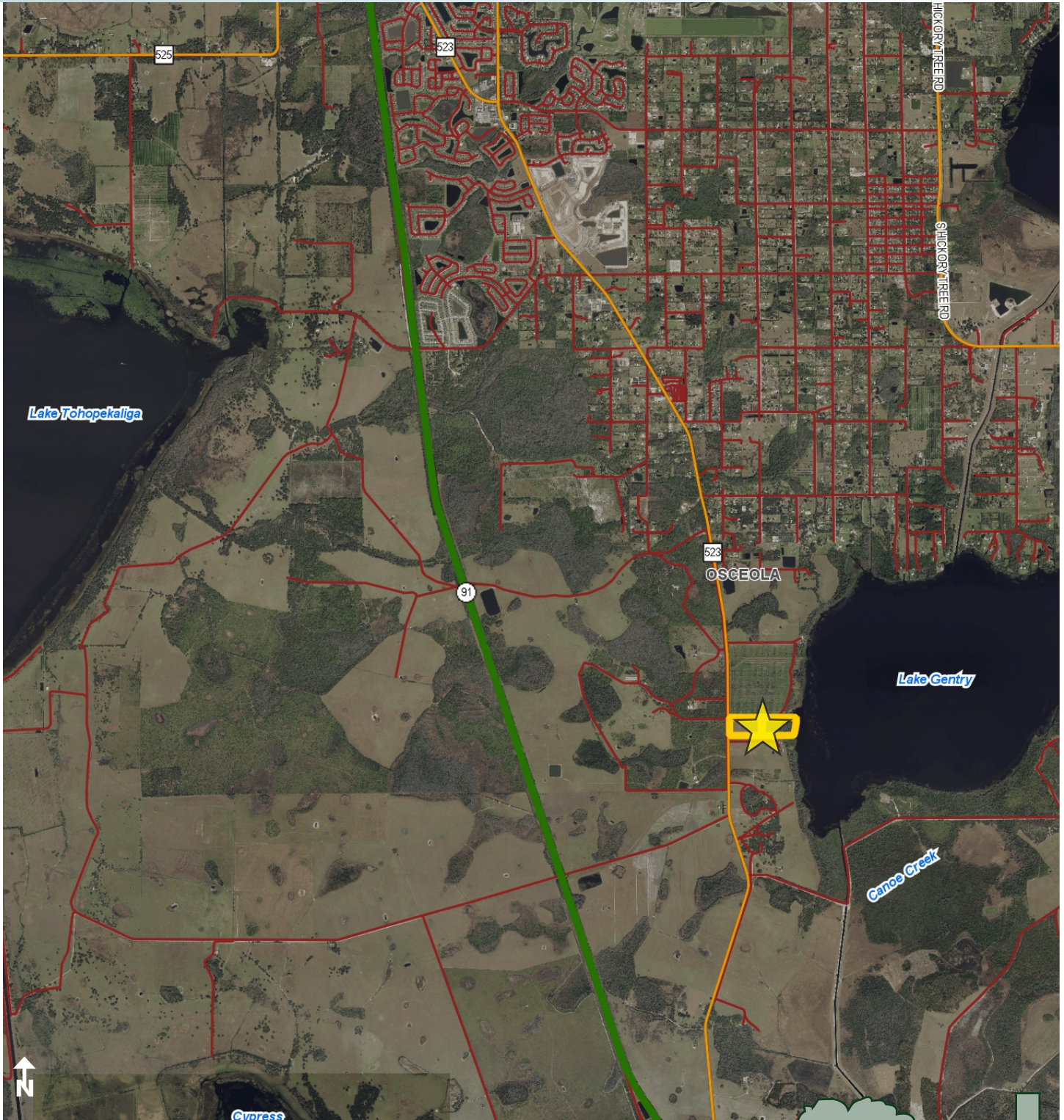


LAKE GENTRY FARMS

34.5± acres

Osceola County, FL

**UNDER
CONTRACT**



REGIONAL MAP

— Commercial Real Estate Investments | Management | Brokerage | Development | Land

Maury L. Carter & Associates, Inc.
407-422-3144 | www.maurycarter.com

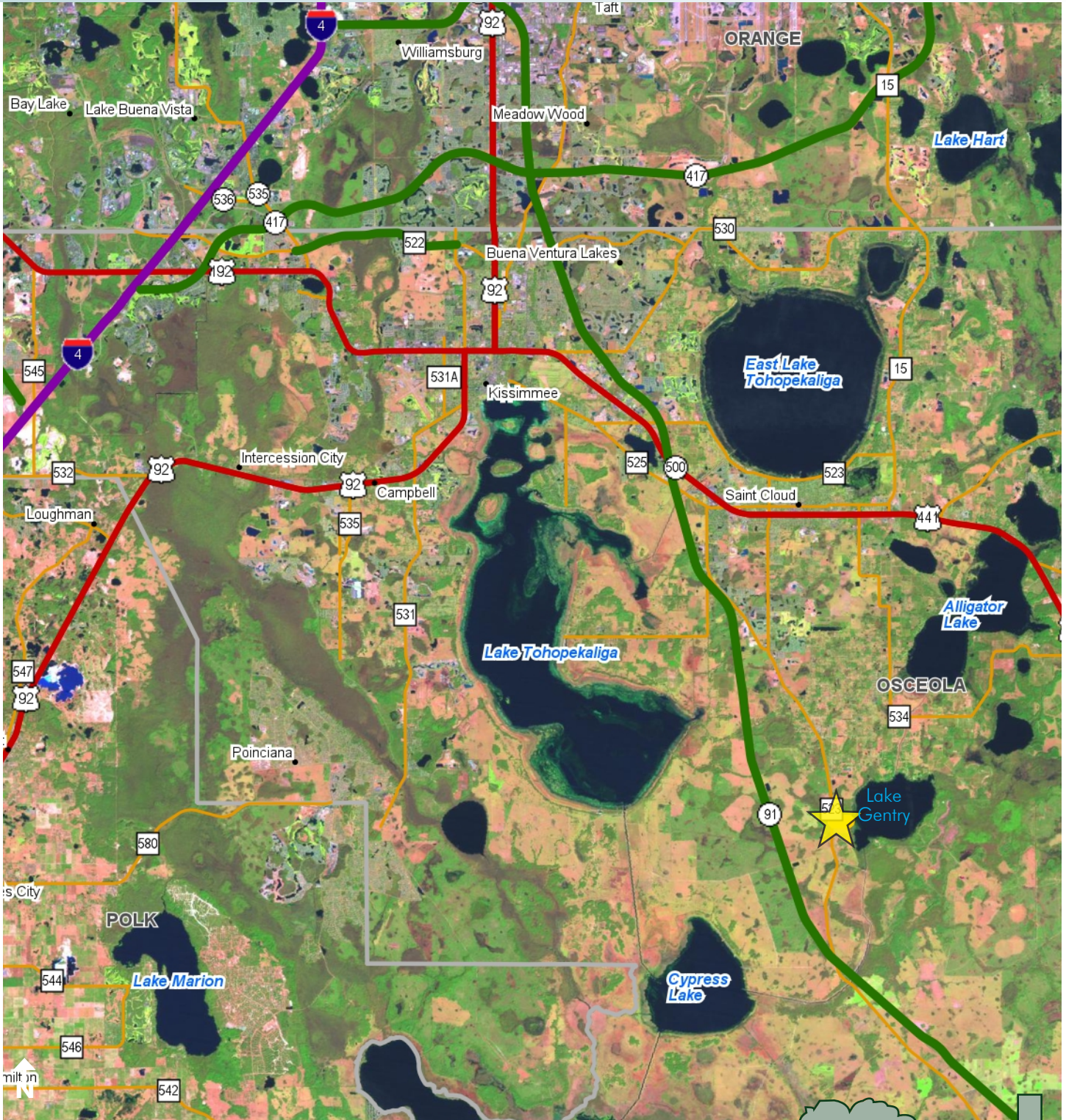


LAKE GENTRY FARMS

34.5± acres

Osceola County, FL

**UNDER
CONTRACT**



LOCATION MAP

— Commercial Real Estate Investments | Management | Brokerage | Development | Land

Maury L. Carter & Associates, Inc.
407-422-3144 | www.maurycarter.com

