

PRIME DEVELOPMENT OPPORTUNITY WITH DIRECT ACCESS TO ALLIGATOR LAKE

64± acres | Osceola County, FL



LOCATION/DESCRIPTION

Unique property located on Whip O Will Lane, Barker Road and Jencot Road, across from the community of Harmony in St. Cloud, Osceola County, Florida. Direct access to Alligator Lake, as well as the six lakes on the Alligator chain. Direct frontage on Whip O Will Lane and adjacent to the Pine Glen development. This pristine property offers the possibility of waterfront homes with lake access - a highly desirable and marketable opportunity in the heart of Central Florida.

SIZE

64± acres

PRICE

\$4,200,000

FLU

Mixed-Use

ELECTRIC

OUC

WATER/SEWER

St. Cloud service area. May require user agreement with Toho Water Authority

PARCEL IDs

14-26-31-0000-0050-0000

14-26-31-5475-0001-00K0

14-26-31-0000-0120-0000

Offering subject to errors, omission, prior sale or withdrawal without notice.

LAND FOR SALE

— Commercial Real Estate Investments | Management | Brokerage | Development | Land

Maury L. Carter & Associates, Inc.
407-422-3144 | www.maurycarter.com



Maury L. Carter & Associates, Inc.SM
Licensed Real Estate Broker

PRIME DEVELOPMENT OPPORTUNITY WITH DIRECT ACCESS TO ALLIGATOR LAKE

64± acres | Osceola County, FL



PROPERTY MAP

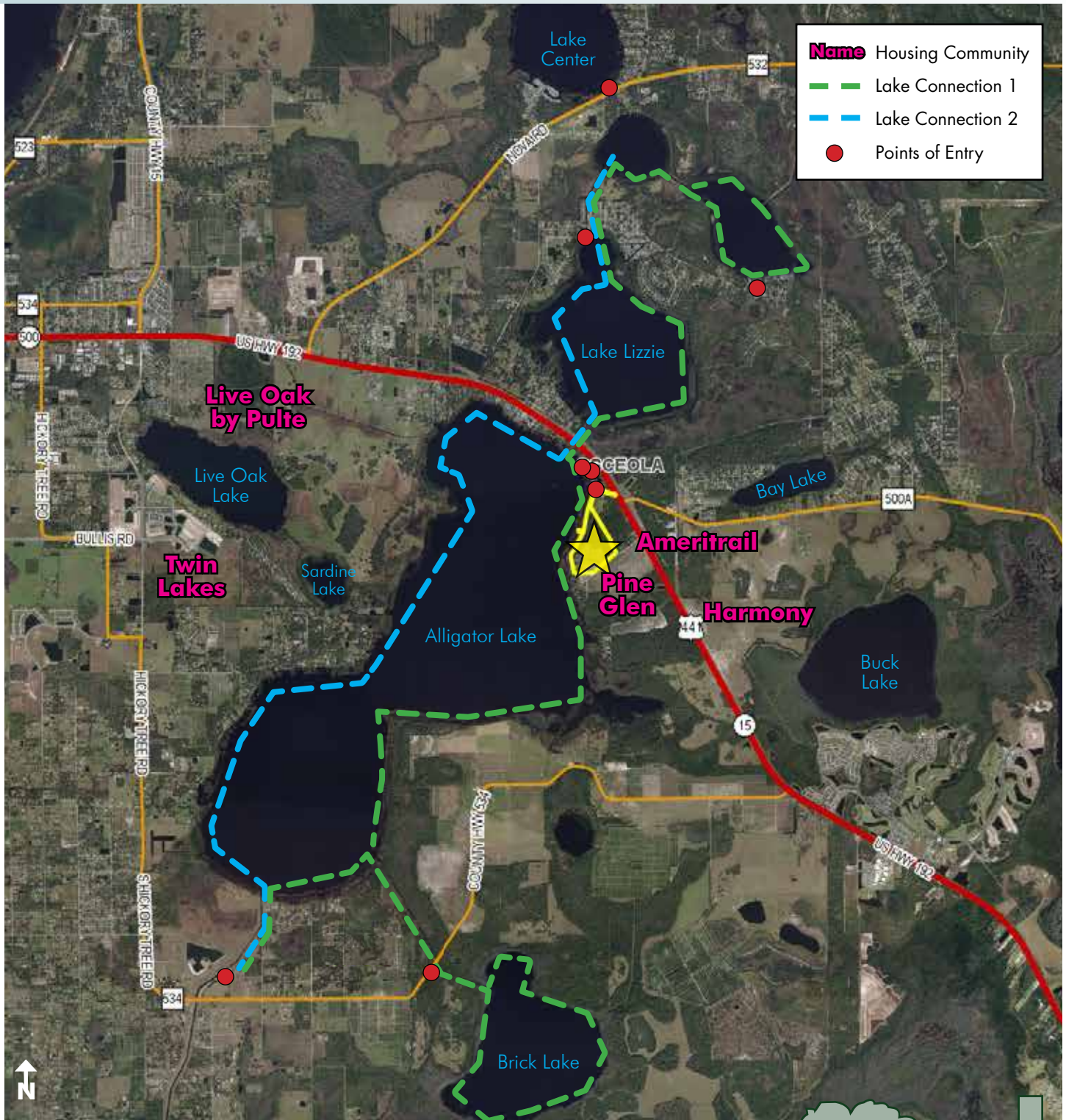
— Commercial Real Estate Investments | Management | Brokerage | Development | Land

Maury L. Carter & Associates, Inc.
407-422-3144 | www.maurycarter.com



PRIME DEVELOPMENT OPPORTUNITY WITH DIRECT ACCESS TO ALLIGATOR LAKE

64± acres | Osceola County, FL



REGIONAL MAP with LAKE CONNECTIVITY

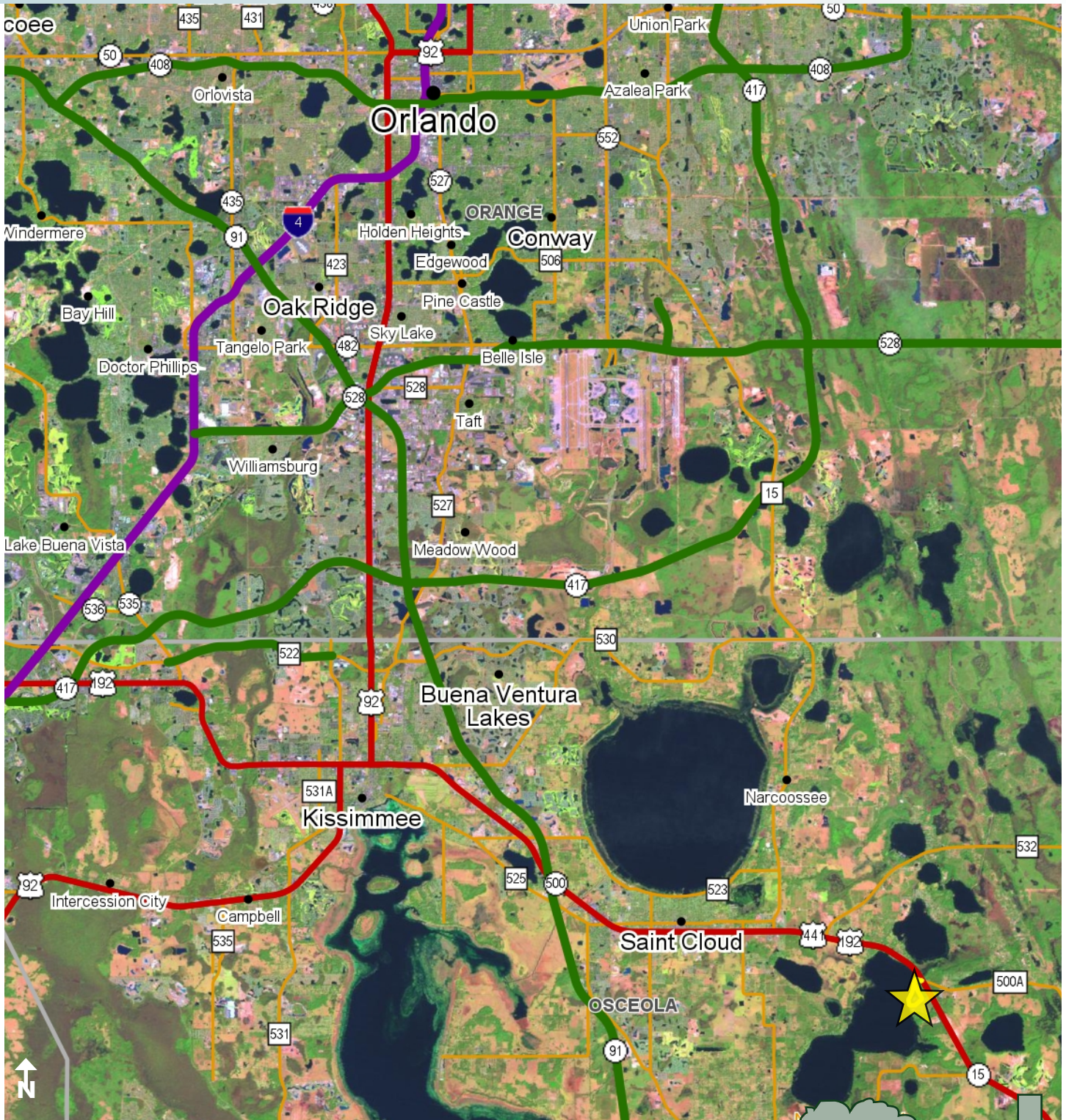
— Commercial Real Estate Investments | Management | Brokerage | Development | Land

Maury L. Carter & Associates, Inc.
407-422-3144 | www.maurycarter.com



PRIME DEVELOPMENT OPPORTUNITY WITH DIRECT ACCESS TO ALLIGATOR LAKE

64± acres | Osceola County, FL



LOCATION MAP

— Commercial Real Estate Investments | Management | Brokerage | Development | Land

Maury L. Carter & Associates, Inc.
407-422-3144 | www.maurycarter.com

