

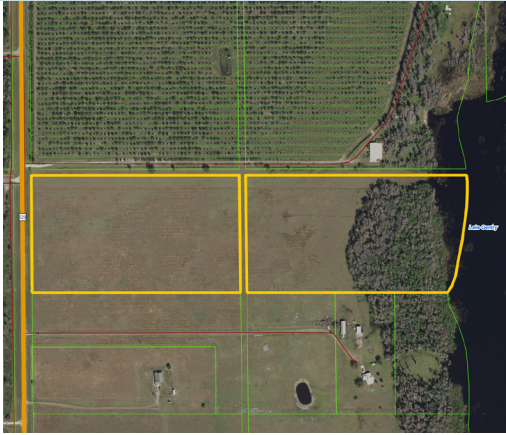
# LAKE GENTRY FARMS

34.5± acres

Osceola County, FL

**PRICE  
REDUCED**

LAND FOR SALE



## DESCRIPTION

This property is conveniently located just 15 minutes south of St. Cloud, FL and a short 45 minute drive to downtown Orlando. This is one of the few properties with hard frontage on Lake Gentry. The property boasts agriculture qualities with a one of a kind water feature. Come see why this can serve as your next estate property, or residential development.

## SIZE

34.5± Acres

## PRICE

**NOW: \$800,000**

~~WAS: \$900,000~~

## ZONING

Agricultural (1 unit/5 acres)

## ROAD FRONTAGE

Canoe Creek Road

## PARCEL ID

3-27-30-4950-0001-0650

Offering subject to errors, omission, prior sale or withdrawal without notice.



— Commercial Real Estate Investments | Management | Brokerage | Development | Land

**Maury L. Carter & Associates, Inc.**  
407-422-3144 | [www.maurycarter.com](http://www.maurycarter.com)

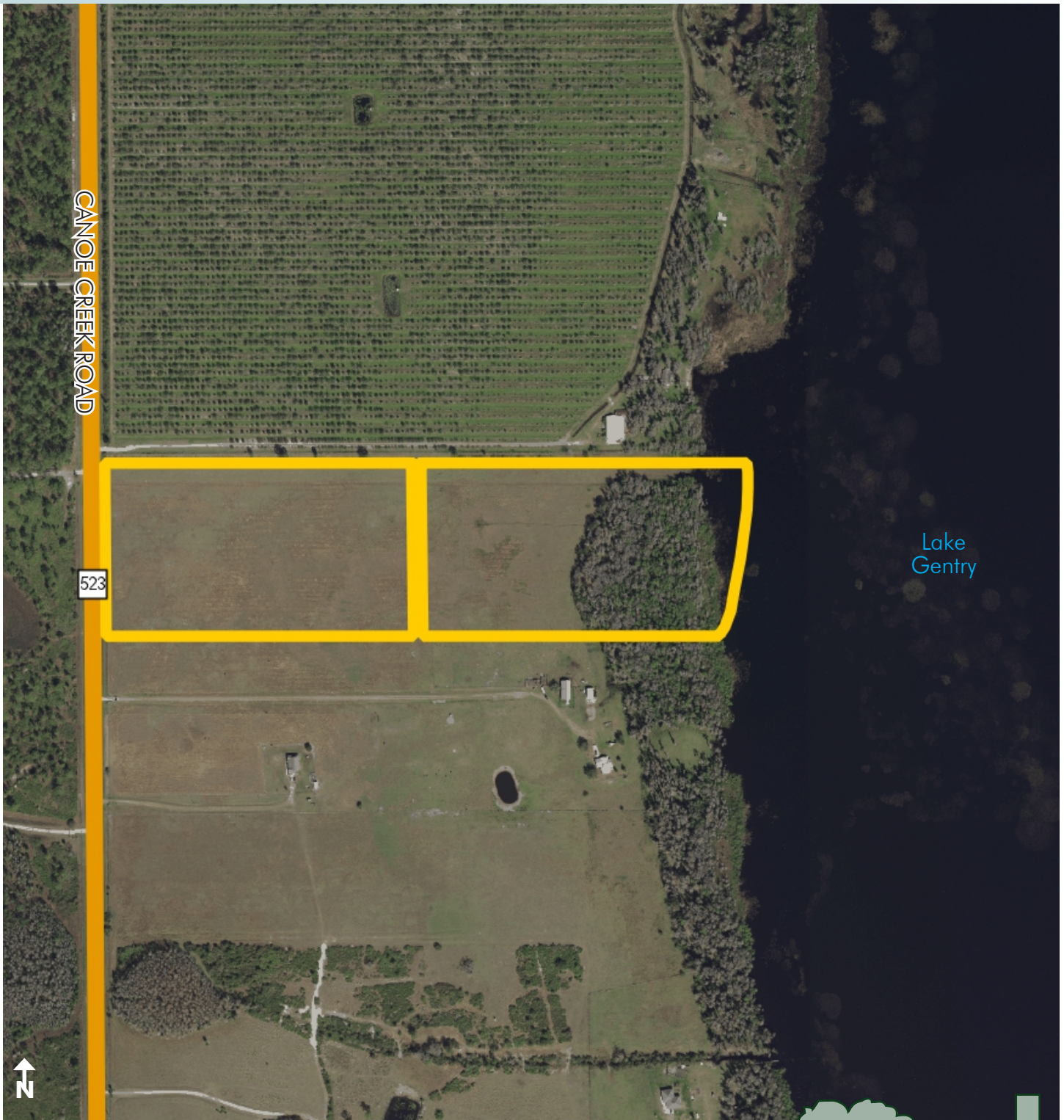


# LAKE GENTRY FARMS

34.5± acres

Osceola County, FL

**PRICE  
REDUCED**



PROPERTY MAP

— Commercial Real Estate Investments | Management | Brokerage | Development | Land

Maury L. Carter & Associates, Inc.  
407-422-3144 | [www.maurycarter.com](http://www.maurycarter.com)



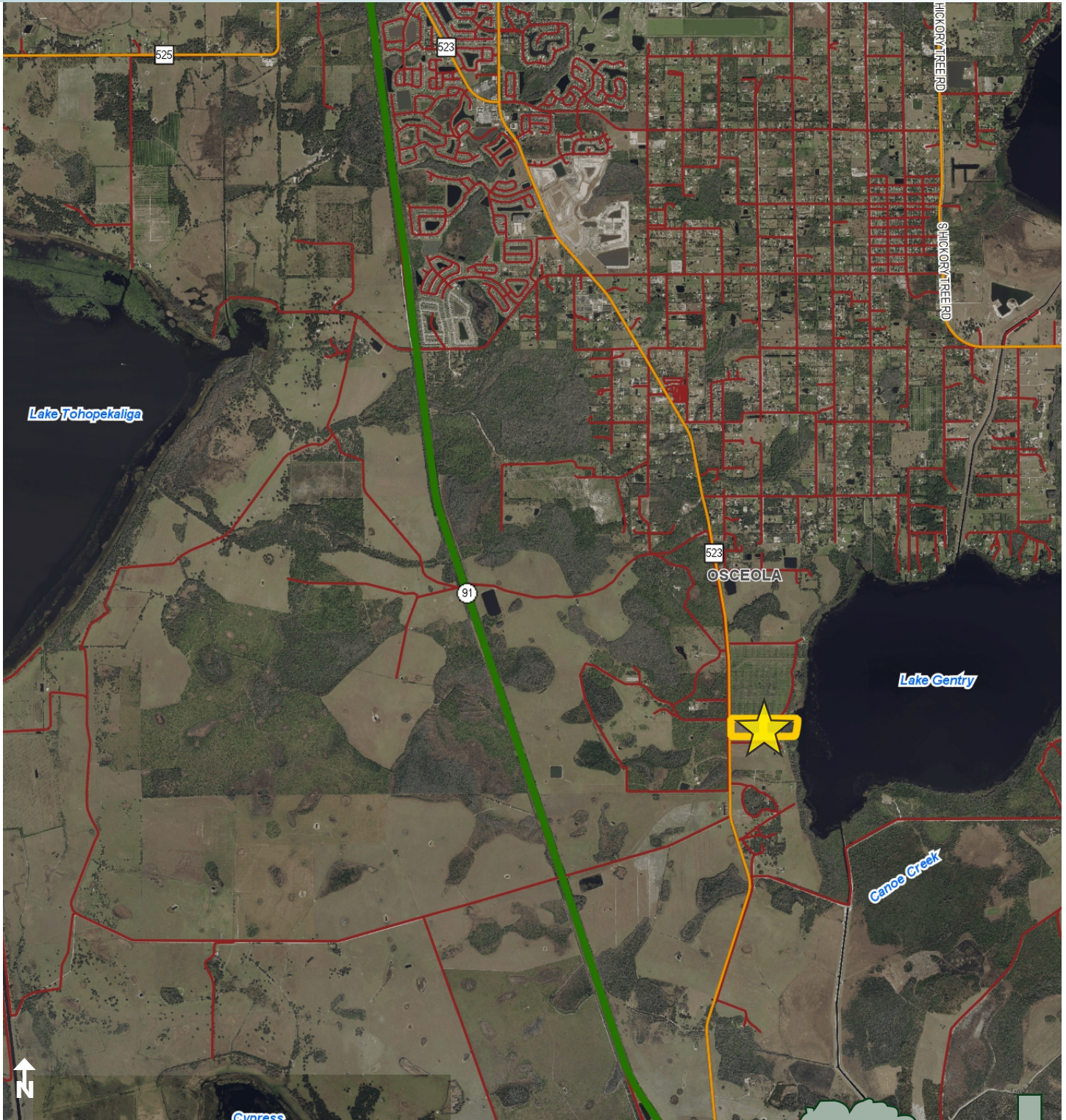


# LAKE GENTRY FARMS

34.5± acres

Osceola County, FL

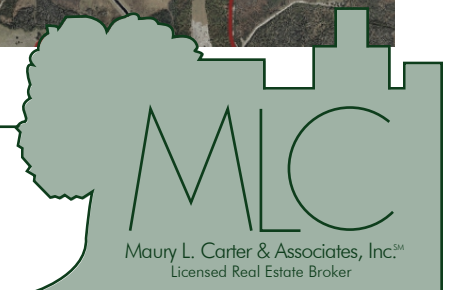
**PRICE  
REDUCED**



REGIONAL MAP

— Commercial Real Estate Investments | Management | Brokerage | Development | Land

Maury L. Carter & Associates, Inc.  
407-422-3144 | [www.maurycarter.com](http://www.maurycarter.com)



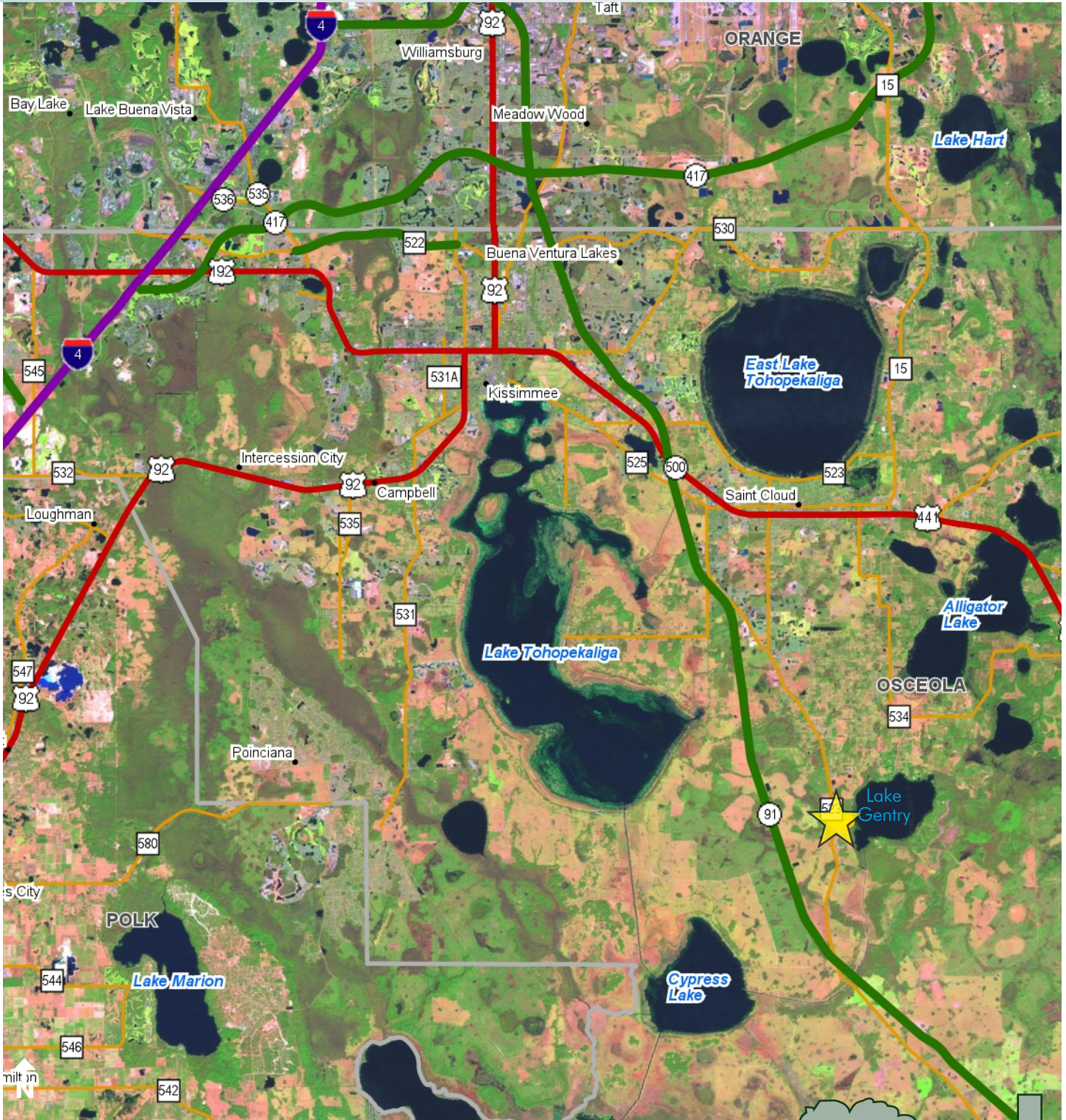


# LAKE GENTRY FARMS

34.5± acres

Osceola County, FL

**PRICE  
REDUCED**



LOCATION MAP

— Commercial Real Estate Investments | Management | Brokerage | Development | Land

Maury L. Carter & Associates, Inc.  
407-422-3144 | [www.maurycarter.com](http://www.maurycarter.com)

