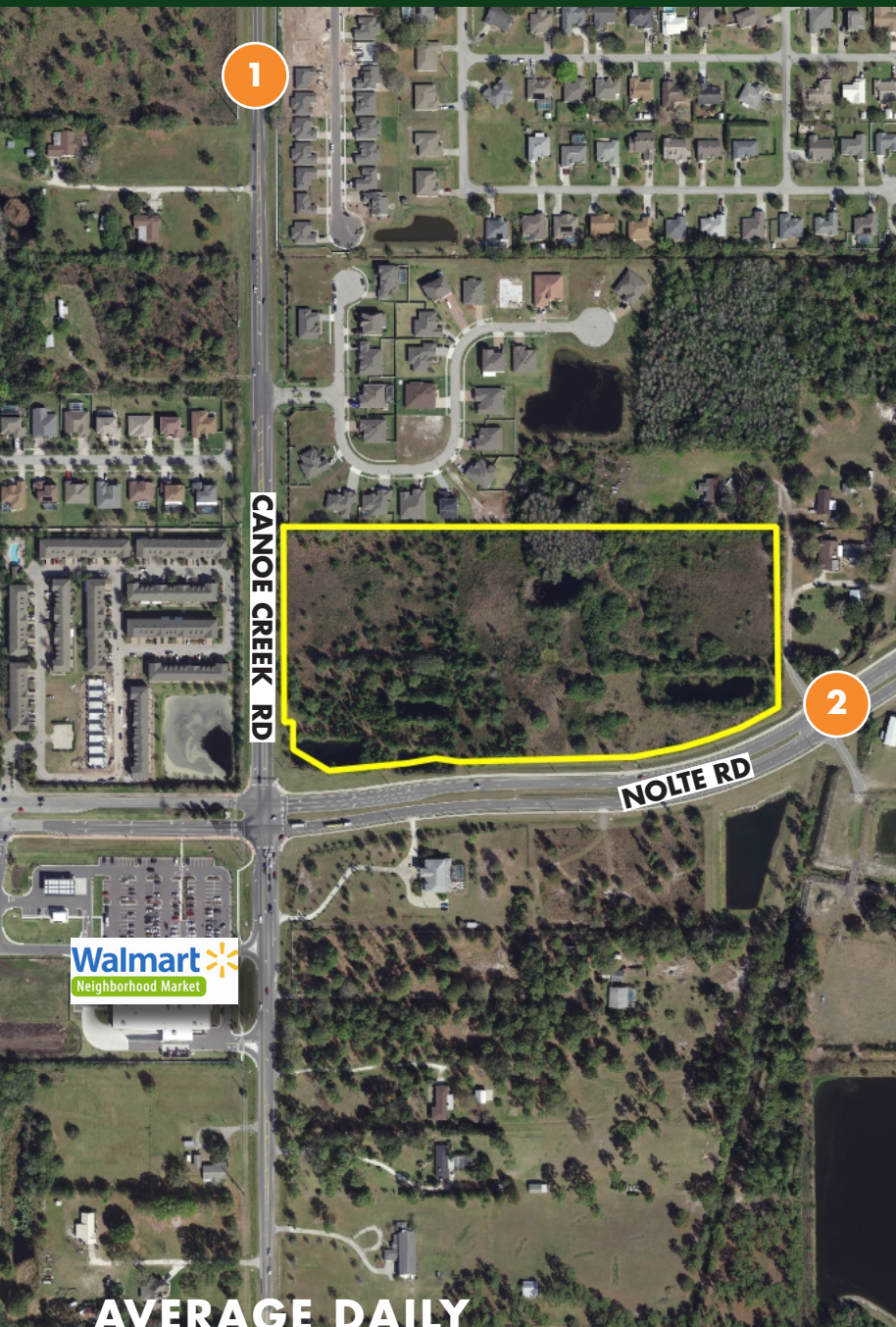


**FOR
SALE**

16 AC ST. CLOUD PRIME COMMERCIAL

Canoe Creek Rd & Nolte Rd, St. Cloud
Osceola County, FL 34769

**UNDER
CONTRACT**



ABOUT THE PROPERTY

SIZE 16.08 acres

PRICE \$4,175,000

AREA Corner of Canoe Creek Rd & Nolte Rd in St. Cloud

**ZONING/
FUTURE
LAND USE** Commercial - Highway Business

UTILITIES Electric - OUC
Water - City of St. Cloud

FRONTAGE 600' on Canoe Creek Rd
1,250' on Nolte Rd

TRAVEL 5 minutes (2 miles) to Florida Turnpike Interchange at Kissimmee Park. 20 minutes to Neo City, Lake Nona, Medical City, Orlando Int'l Airport. 1 hour to beaches.

34769 DEMOGRAPHICS (US CENSUS 7/2018)

POPULATION

54,115

MEDIAN HH INCOME

\$53,544

AVERAGE DAILY TRAFFIC COUNTS (2019)

1 13,702 N on Canoe Creek Rd (Nolte Rd to US 192-441)

2 13,417 E on Nolte Rd (Canoe Creek Rd to Michigan Ave)

MAURY L. CARTER & ASSOCIATES, INC.

Licensed Real Estate Brokers | www.maurycarter.com | 407-422-3144



Maury L. Carter & Associates, Inc.SM
Licensed Real Estate Broker

**FOR
SALE**

16 AC ST. CLOUD PRIME COMMERCIAL

Canoe Creek Rd & Nolte Rd, St. Cloud
Osceola County, FL 34769

**UNDER
CONTRACT**



REGIONAL MAP

MAURY L. CARTER & ASSOCIATES, INC.

Licensed Real Estate Brokers | www.maurycarter.com | 407-422-3144



**FOR
SALE**

16 AC ST. CLOUD PRIME COMMERCIAL

Canoe Creek Rd & Nolte Rd, St. Cloud
Osceola County, FL 34769

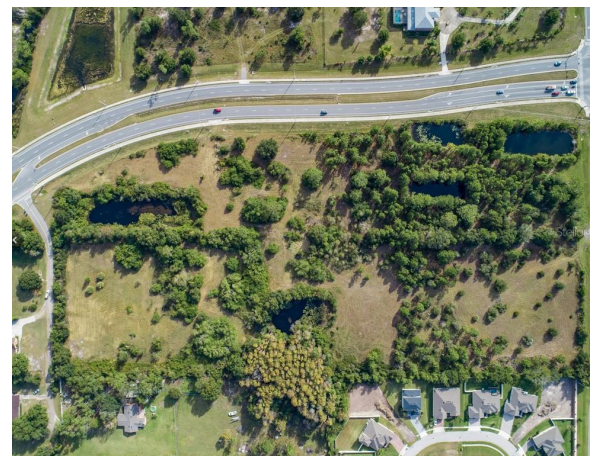
**UNDER
CONTRACT**

PROPERTY HIGHLIGHTS

AREA Prime location for development and growth for both commercial and residential uses.

PROXIMITY Close to downtown St. Cloud, Lake Nona/Medical City, Neo City, and not far from the beaches. Within commuting distance to downtown Orlando, Kissimmee, Walt Disney World Resort, Universal Studios, Sea World and the tourist corridor.

GROWTH Extensive economic activity in Osceola County and St. Cloud makes this a prime property for development and growth for both commercial and residential uses in the area. Strong economic growth is expected to continue in the region.



MAURY L. CARTER & ASSOCIATES, INC.

Licensed Real Estate Brokers | www.maurycarter.com | 407-422-3144

