

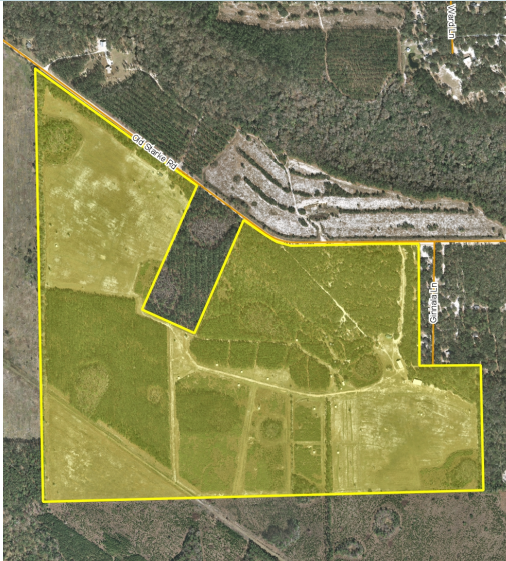
# OLD STARKE ROAD RANCH

300± acres

Palatka, Putnam County, FL

**SOLD!**

LAND FOR SALE



## LOCATION

Located at 289 Old Starke Road, Palatka, FL 32177. Approximately 15 minutes to downtown Palatka, 1 hour west to Gainesville and 1 hour east to St. Augustine and the east coast. Close proximity to SR 100, Hwy 17, SR 20.

## SIZE

300± acres

## PRICE

\$1,197,000 or \$3,990/acre

**OWNER FINANCING AVAILABLE!**

## ZONING/FUTURE LAND USE

Zoned: AG. Future Land Use: 1 DU/10 acres or 1 DU/20 acres

## ROAD FRONTAGE

4100'± on Old Starke Road

## IMPROVEMENTS

- Single family residence: 1,650 sf, 3 bed/2 bath
- Double bay drive through steel barn: 40'x80'
- Loading shed/poll barn: 50x60

## DESCRIPTION

Farmers, ranchers, equestrian, high fenced game operations, recreational enthusiasts and other land buyers, this is the opportunity for you! Owner operated. Old Starke Road Ranch is currently being utilized for horse and cattle ranching and previously for goat farming. Perfect for a recreational buyer. Live, recreate, hunt, four wheel, engage in equestrian activities, cattle ranching, hobby farming, etc. While the property is high fenced, there are not many deer within the property's boundaries. However, deer and wildlife could either be brought in to start of permitted high fenced operation OR some portions of the perimeter fence could be lowered in order for deer, turkey and hogs to enter the property and use the environment as its home.

In addition to the above, high tension transmission lines run through the southwest corner of this property. This property might be a good long term candidate for solar power.

Offering subject to errors, omission, prior sale or withdrawal without notice.



## UTILITIES

Power available to the site and throughout - well and septic on site.

## WELLS

- 3" - 6" wells on site
- 1 residential well
- Property irrigated and zoned

## FENCING

Property completely perimeter fenced (with hog wire). In addition, all interior cross fencing is hog wire.

## PIDs

18-09-26-0000-0020-0040  
18-09-26-8363-0010-0010

— Commercial Real Estate Investments | Management | Brokerage | Development | Land

Maury L. Carter & Associates, Inc.  
407-422-3144 | [www.maurycarter.com](http://www.maurycarter.com)



Maury L. Carter & Associates, Inc.<sup>SM</sup>  
Licensed Real Estate Broker

# OLD STARKE ROAD RANCH

300± acres

Palatka, Putnam County, FL

**SOLD!**

LAND FOR SALE



Additional photos available upon request.

— Commercial Real Estate Investments | Management | Brokerage | Development | Land

Maury L. Carter & Associates, Inc.  
407-422-3144 | [www.maurycarter.com](http://www.maurycarter.com)



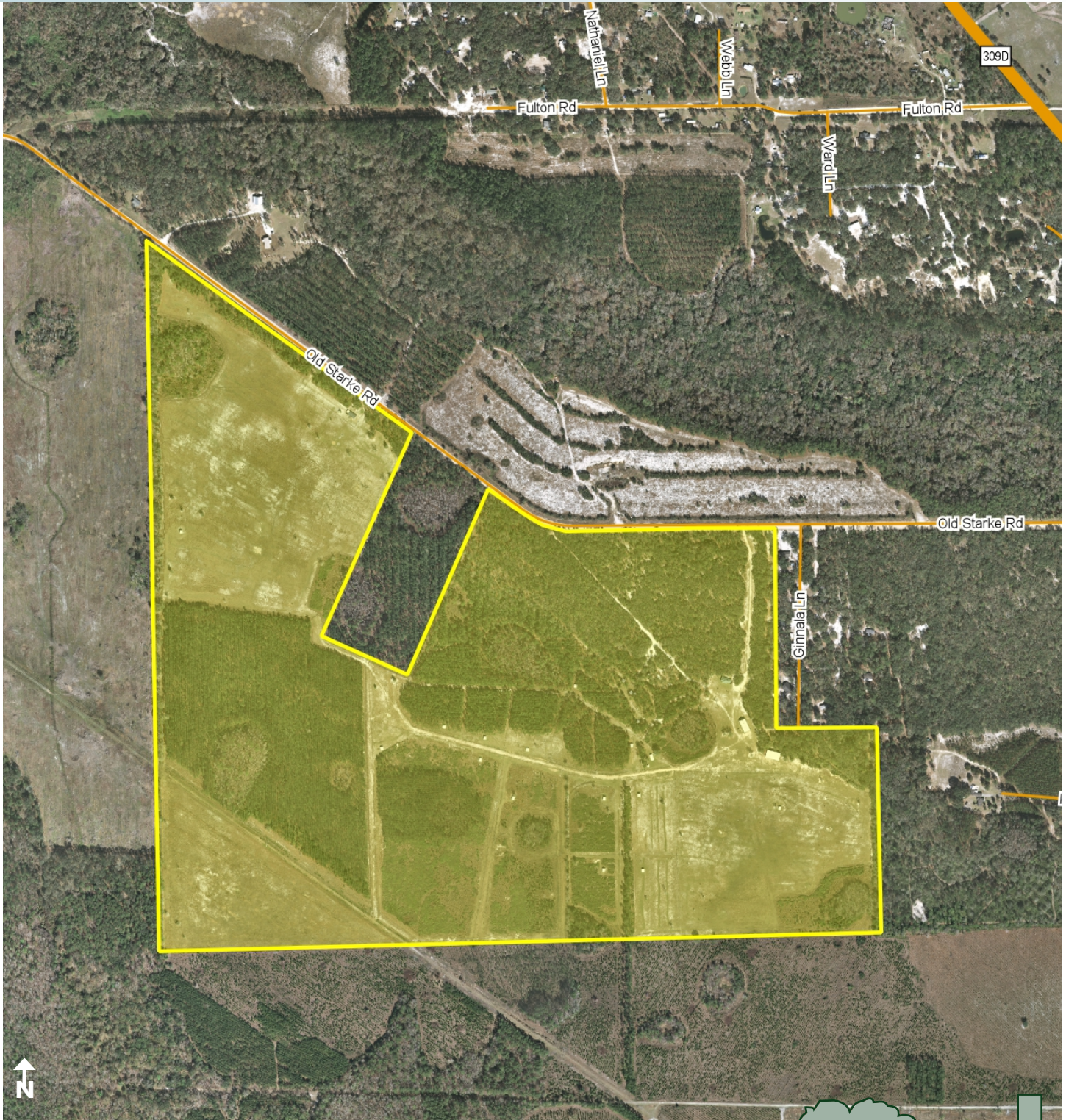


# OLD STARKE ROAD RANCH

300± acres

Palatka, Putnam County, FL

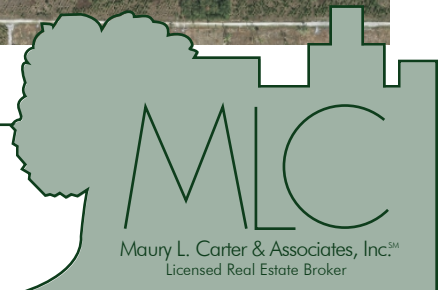
**SOLD!**



PROPERTY MAP

— Commercial Real Estate Investments | Management | Brokerage | Development | Land

Maury L. Carter & Associates, Inc.  
407-422-3144 | [www.maurycarter.com](http://www.maurycarter.com)





# OLD STARKE ROAD RANCH

300± acres

Palatka, Putnam County, FL

**SOLD!**



REGIONAL MAP

— Commercial Real Estate Investments | Management | Brokerage | Development | Land

Maury L. Carter & Associates, Inc.  
407-422-3144 | [www.maurycarter.com](http://www.maurycarter.com)



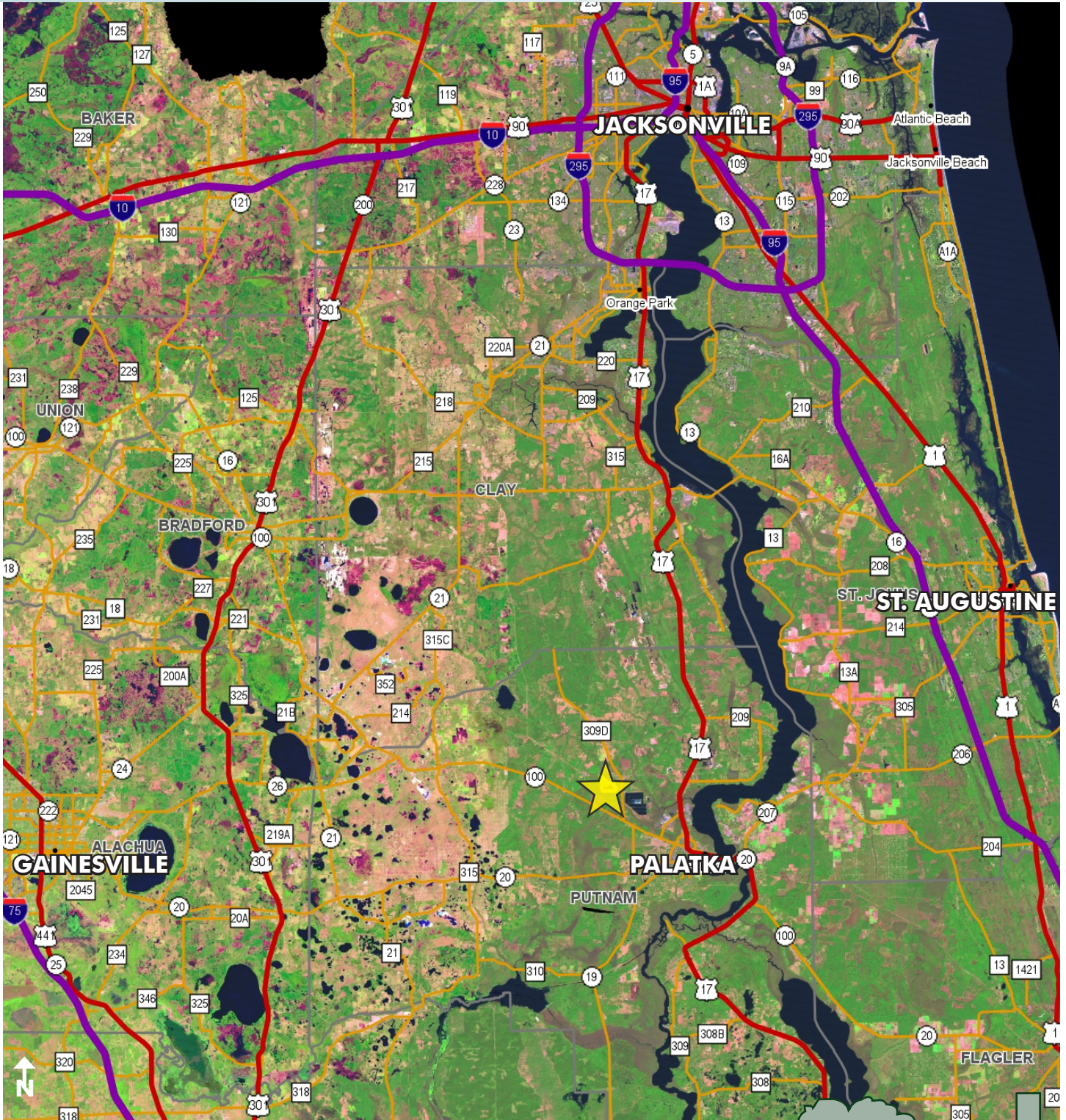


# OLD STARKE ROAD RANCH

300± acres

Palatka, Putnam County, FL

**SOLD!**



LOCATION MAP

— Commercial Real Estate Investments | Management | Brokerage | Development | Land

Maury L. Carter & Associates, Inc.  
407-422-3144 | [www.maurycarter.com](http://www.maurycarter.com)

