

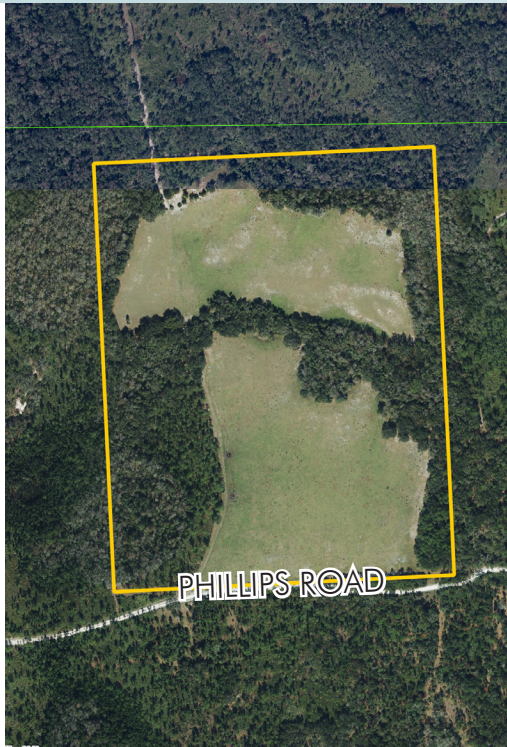
EAST ORANGE COUNTY HUNTING LAND

88± acres

Orange County, FL

**PRICE
REDUCED**

LAND FOR SALE



LOCATION

Phillips Road, Christmas, FL 32709

SIZE

88± acres

PRICE

NOW: \$700,000

~~WAS: \$925,000~~

ZONING

A-2; 1 unit/10 acres

ROAD FRONTAGE

Access off of Phillips Road

UTILITIES

Wells and electricity on site

DESCRIPTION

This property is the epitome of "Old Florida." This property is surrounded by thousands upon thousands of acres of the St. Johns Water Management District land and state owned land. If you are a wildlife enthusiast, this property offers an over abundance of deer, turkey, birds and other native Florida wildlife. There is little to no pressure on the wildlife in the area as the property is surrounded by the previously mentioned government owned lands. Few properties are available with these characteristics, and being so closely located to Orlando. Located just 45 minutes East of Orlando, enjoy the comforts of the country with the convenience of the city.

This property is perimeter fenced. Joshua Creek runs and winds through a portion of the property. In addition to a spectacular hunting property, this property would double nicely as a hobby ranch or hobby farm. This ranch offers tremendous potential and endless opportunities for the avid outdoors men, recreationalist, equestrian enthusiast, or other outdoor enthusiasts.

Offering subject to errors, omission, prior sale or withdrawal without notice.

— Commercial Real Estate Investments | Management | Brokerage | Development | Land —

Maury L. Carter & Associates, Inc.

407-422-3144 | www.maurycarter.com



EAST ORANGE COUNTY HUNTING LAND

88± acres

Orange County, FL

**PRICE
REDUCED**



— Commercial Real Estate Investments | Management | Brokerage | Development | Land —

Maury L. Carter & Associates, Inc.
407-422-3144 | www.maurycarter.com

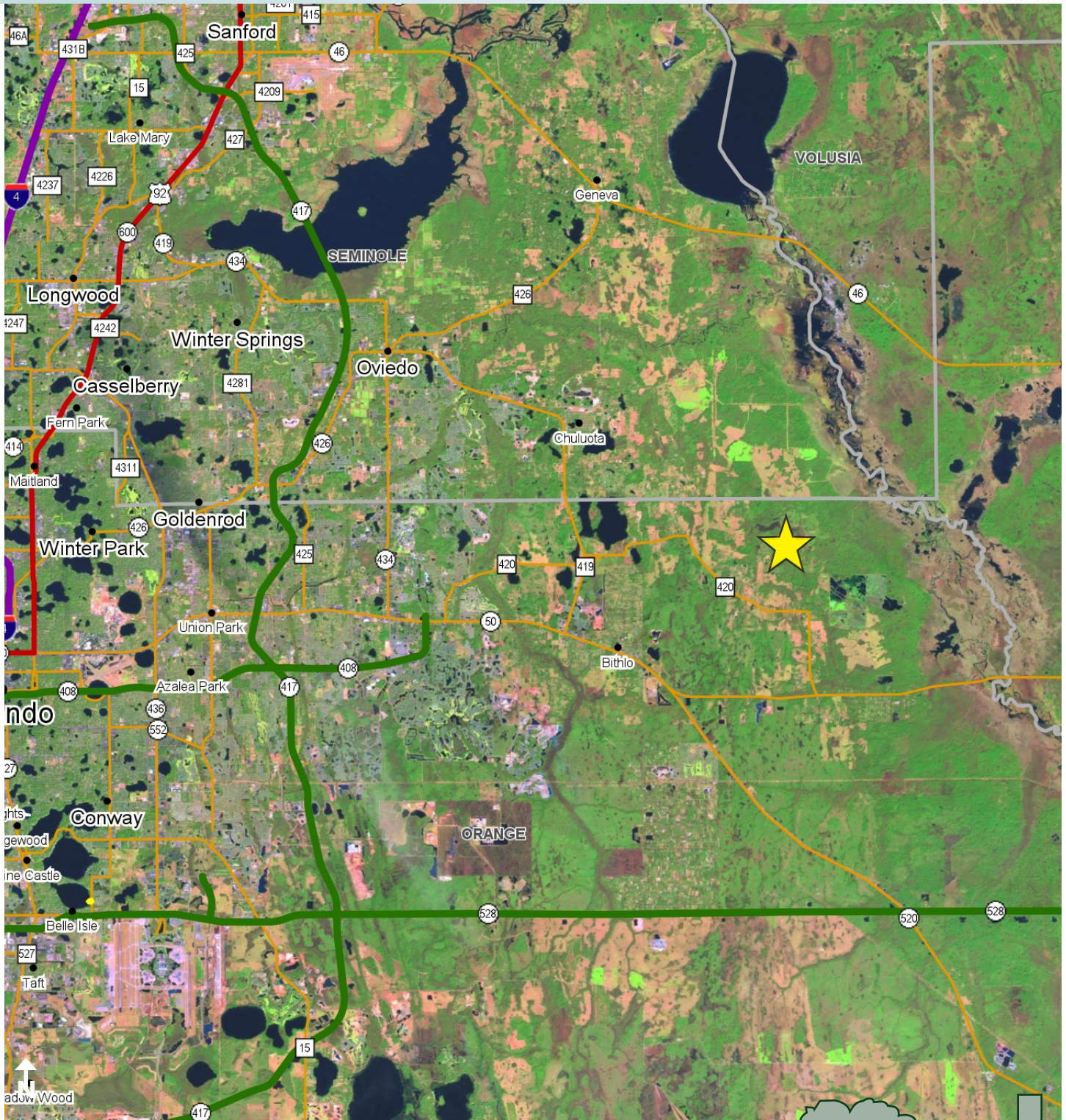


EAST ORANGE COUNTY HUNTING LAND

88± acres

Orange County, FL

**PRICE
REDUCED**



LOCATION MAP

— Commercial Real Estate Investments | Management | Brokerage | Development | Land

Maury L. Carter & Associates, Inc.
407-422-3144 | www.maurycarter.com

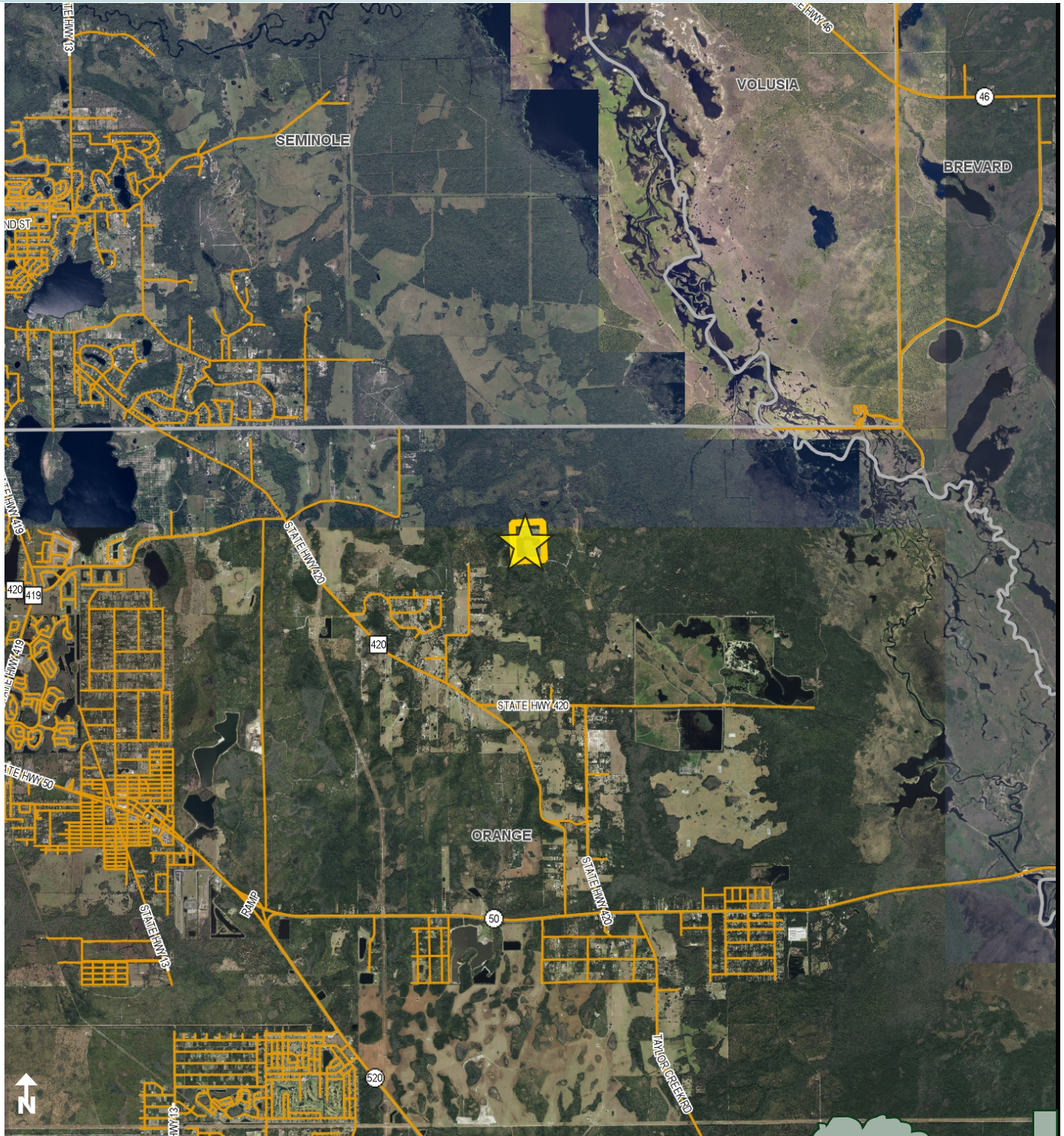


EAST ORANGE COUNTY HUNTING LAND

88± acres

Orange County, FL

**PRICE
REDUCED**



REGIONAL MAP

— Commercial Real Estate Investments | Management | Brokerage | Development | Land

Maury L. Carter & Associates, Inc.

407-422-3144 | www.maurycarter.com

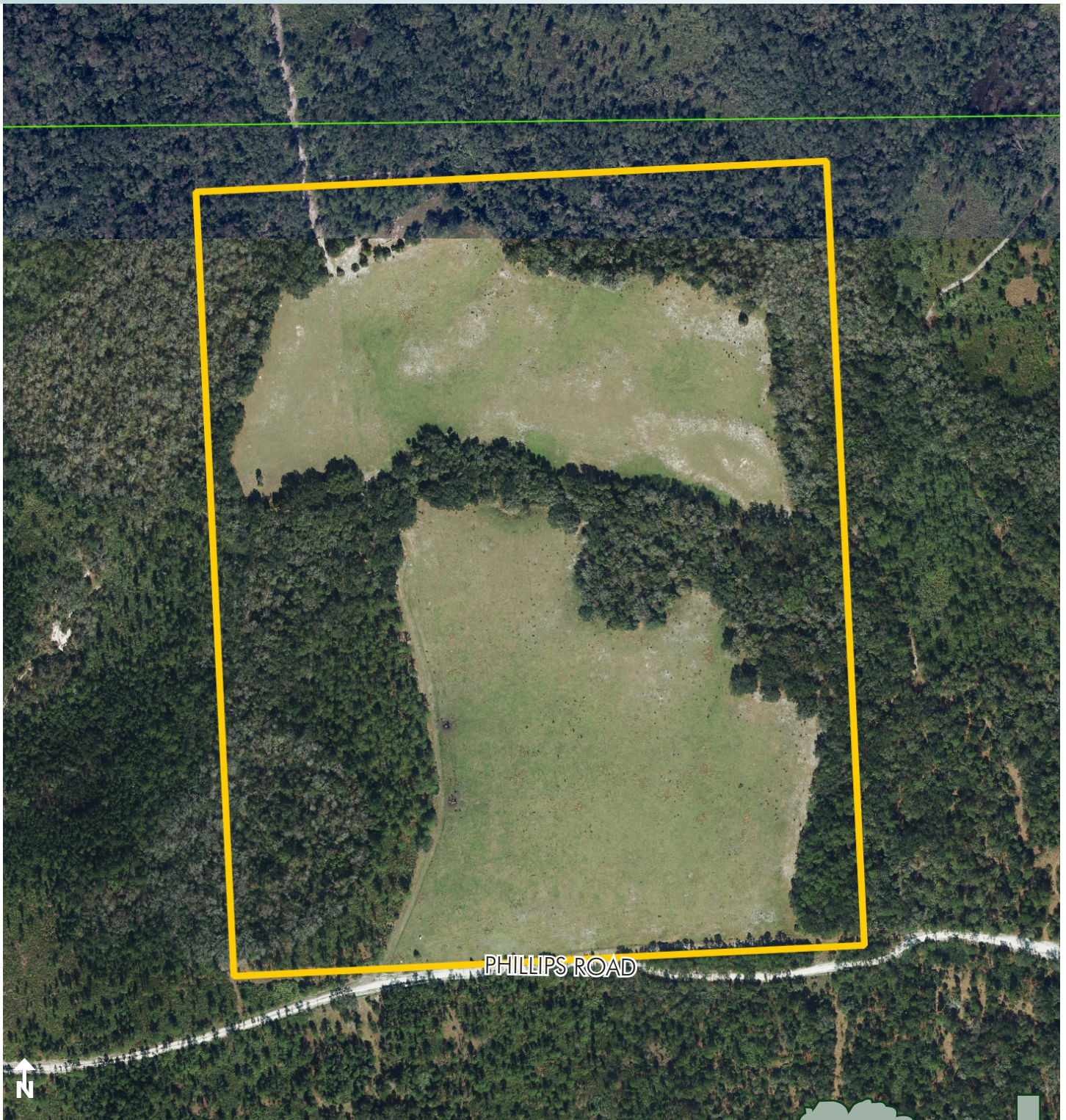


EAST ORANGE COUNTY HUNTING LAND

88± acres

Orange County, FL

**PRICE
REDUCED**



PROPERTY MAP

— Commercial Real Estate Investments | Management | Brokerage | Development | Land —

Maury L. Carter & Associates, Inc.
407-422-3144 | www.maurycarter.com

