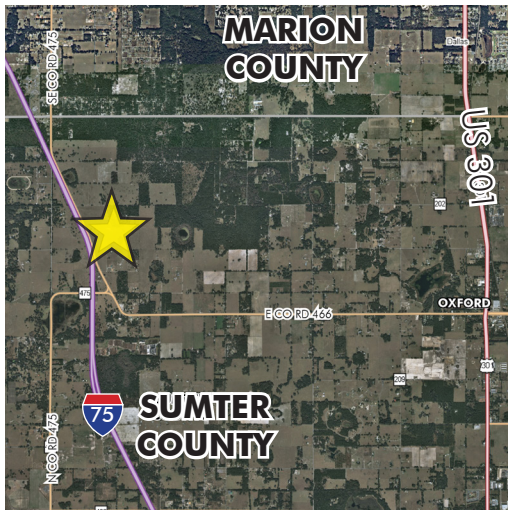
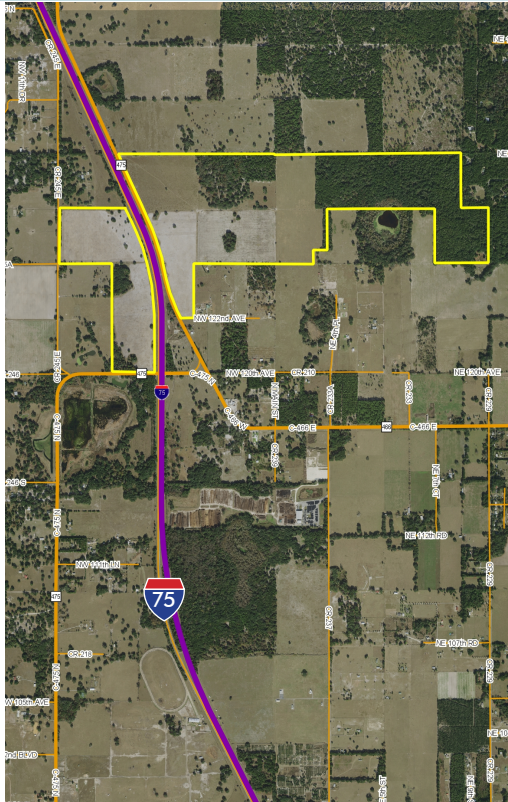


# INTERSTATE 75

544 ± acres

Sumter County, FL



## LOCATION

Property is located north of County Road 466, four miles west of The Villages. It is bisected by Interstate 75 and County Road 475.

## SIZE

544 ± acres - Seller may consider dividing.

## PRICE

\$13,600,000 or \$25,000/acre

## ZONING

Agricultural – 1 unit per 5 acres / 66.5± acres  
Commercial fronting County Road 475.

## ROAD FRONTAGE

4,277' ± on east side of CR 475 (west of I-75)

2,652' ± on west side of I-75

1,330' ± on east side of CR 245

306' ± on north side of NW 122nd Avenue

1,000' ± on north side of CR 475 (east of I-75)

## UTILITIES

Septic and well.

## DESCRIPTION

Agricultural – 1 unit / 5 acres.

66.5+/- acres - Commercial fronting CR 475.

Offering subject to errors, omission, prior sale or withdrawal without notice.

LAND FOR SALE

— Commercial Real Estate Investments | Management | Brokerage | Development | Land

Maury L. Carter & Associates, Inc.

407-422-3144 | [www.maurycarter.com](http://www.maurycarter.com)



Maury L. Carter & Associates, Inc.<sup>SM</sup>  
Licensed Real Estate Broker



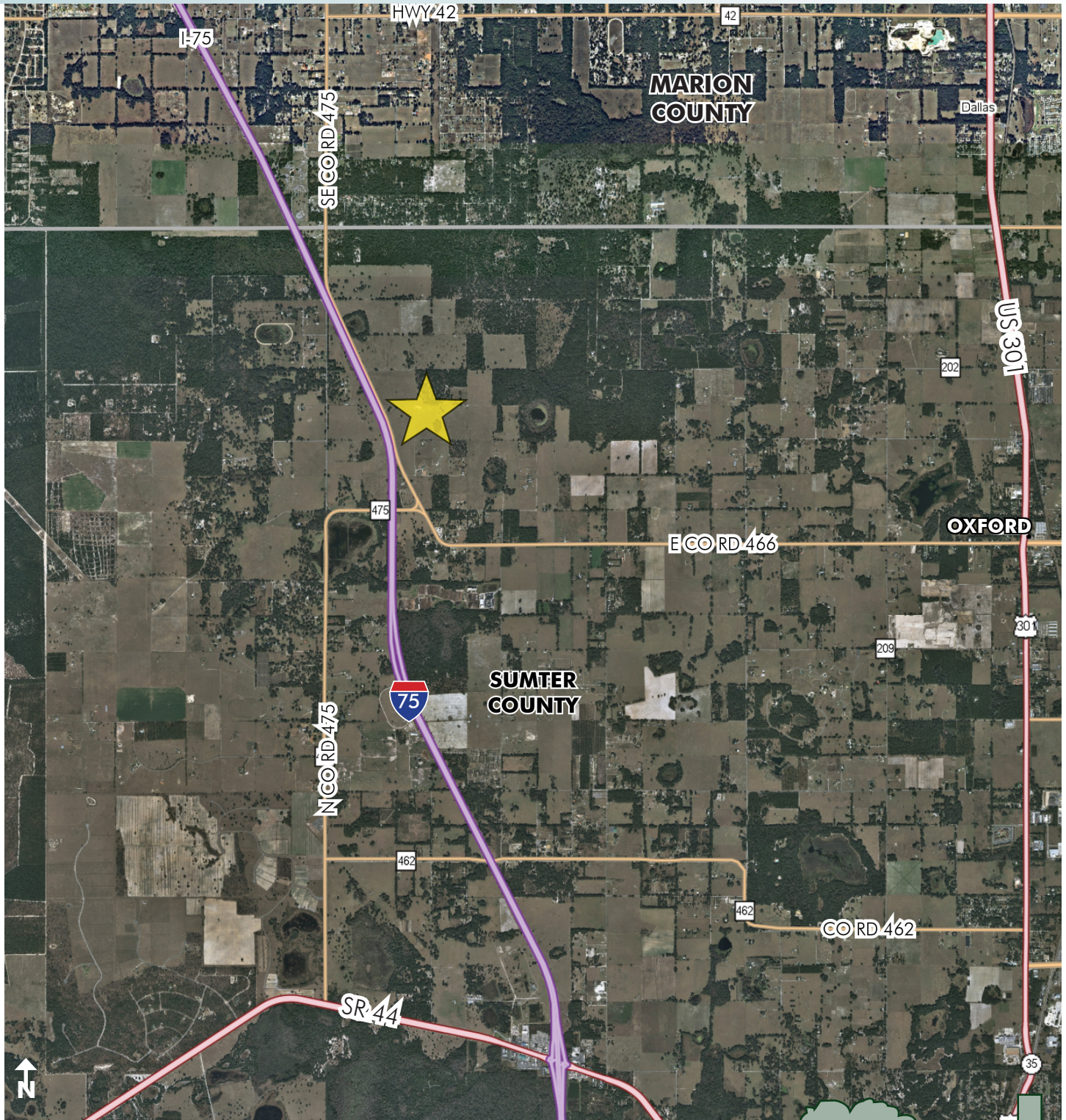




# INTERSTATE 75

544 ± acres

Sumter County, FL



LOCATION MAP

— Commercial Real Estate Investments | Management | Brokerage | Development | Land

Maury L. Carter & Associates, Inc.  
407-422-3144 | [www.maurycarter.com](http://www.maurycarter.com)

