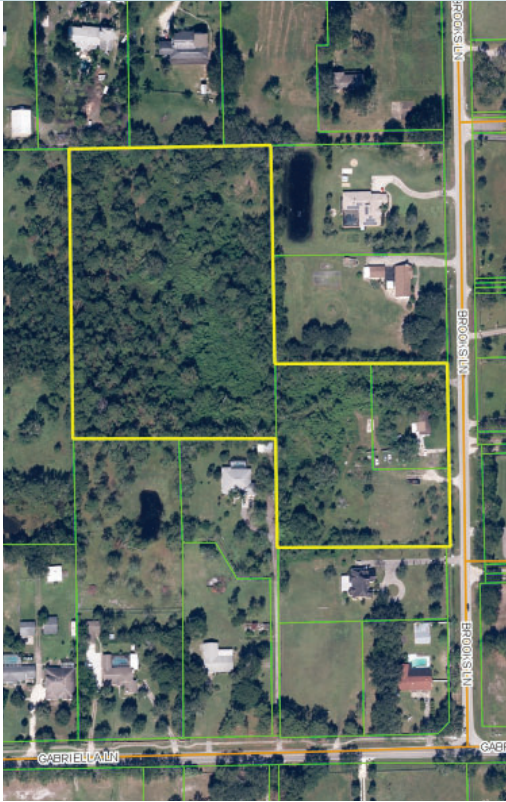


SINGLE FAMILY DEVELOPMENT INFILL LAND

9.55± acres | Seminole County, FL



LOCATION

Property located along the west side of Brooks Lane just north of Gabriella Lane in unincorporated Seminole County, just ½ mile east of Tuskawilla Road and less than 1 mile north of the Aloma Avenue/SR 417 interchange. The in-fill parcel is strategically located near neighborhood retail shopping districts. Public schools include Rainbow Elementary (Grade A), Tuskawilla Middle (Grade B) & Lake Howell High (Grade B).

SIZE

9.55± acres

PRICE

\$1,235,000

ZONING

Agricultural/Suburban Estates (1DU/AC). Potential for higher density with cluster development

ROAD FRONTAGE

390' ± along the west side of Brooks Lane

UTILITIES

All available and to site except municipal sewer service. Force main is located at the intersection of Tuskawilla Lane and Gabriella Lane ½ mile to the west.

DESCRIPTION

The parcel is irregularly shaped, mostly level, predominantly covered with native vegetation and at road grade. A small residential home is located at the frontage. The parcel is gently rolling with topography from 50'-55' and is located outside of the flood zone.

Offering subject to errors, omission, prior sale or withdrawal without notice.

DRIVE TIMES

25 minute to Orlando
10 minutes to Oviedo
20 minutes to Winter Park
15 minutes to UCF

LAND FOR SALE

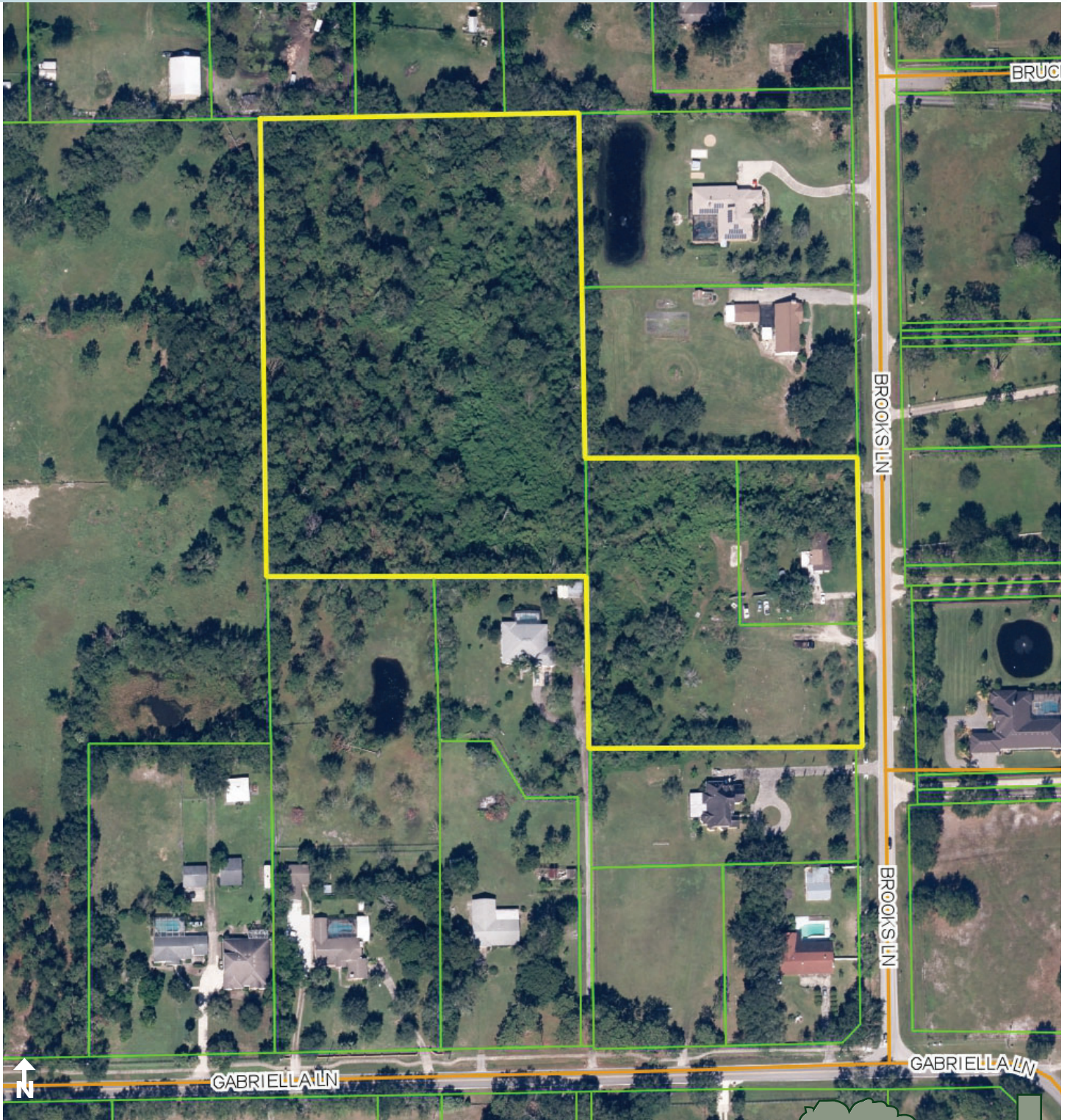
— Commercial Real Estate Investments | Management | Brokerage | Development | Land

Maury L. Carter & Associates, Inc.
407-422-3144 | www.maurycarter.com



SINGLE FAMILY DEVELOPMENT INFILL LAND

9.55± acres | Seminole County, FL



PROPERTY MAP

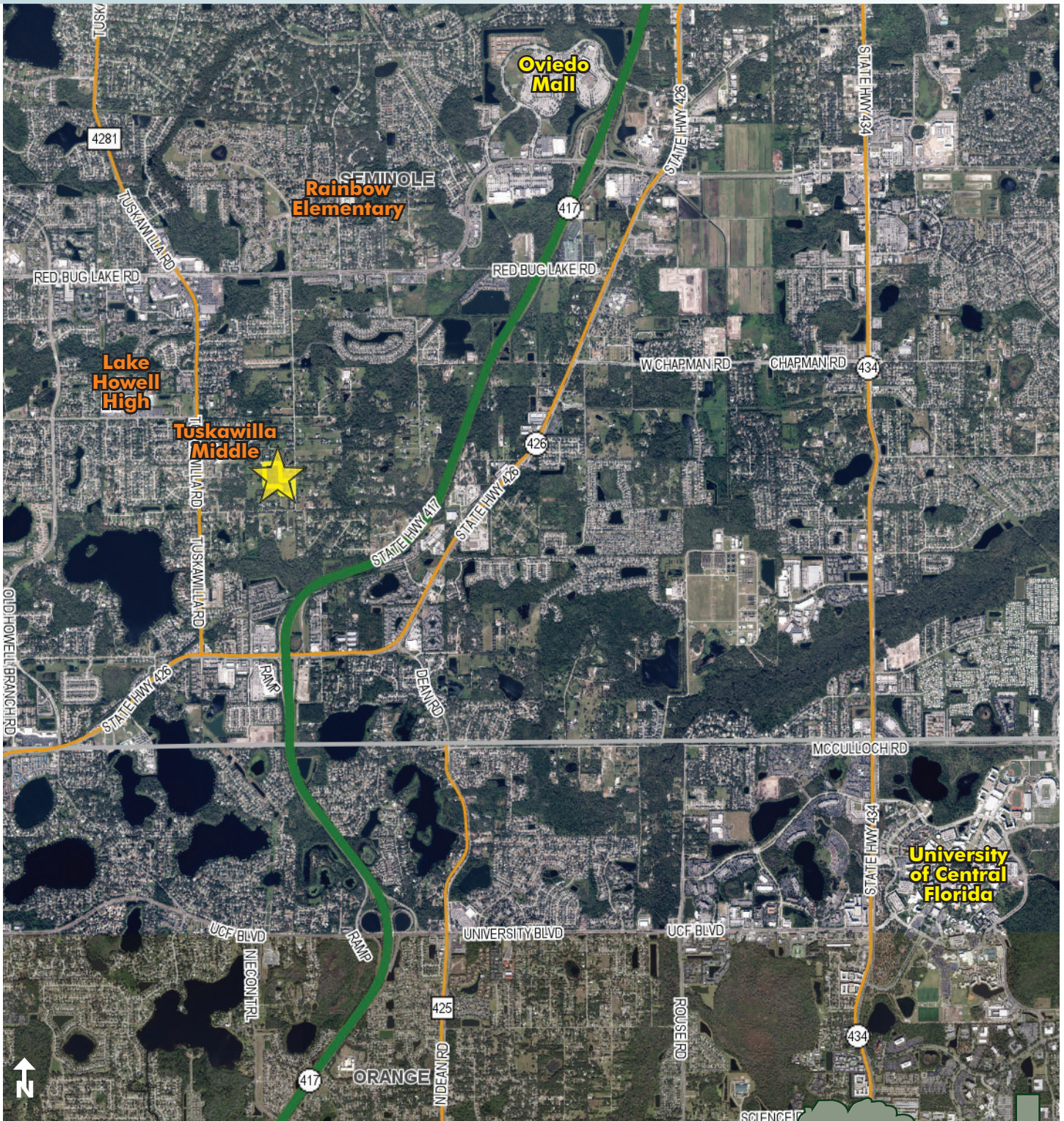
— Commercial Real Estate Investments | Management | Brokerage | Development | Land

Maury L. Carter & Associates, Inc.
407-422-3144 | www.maurycarter.com



SINGLE FAMILY DEVELOPMENT INFILL LAND

9.55± acres | Seminole County, FL



REGIONAL MAP

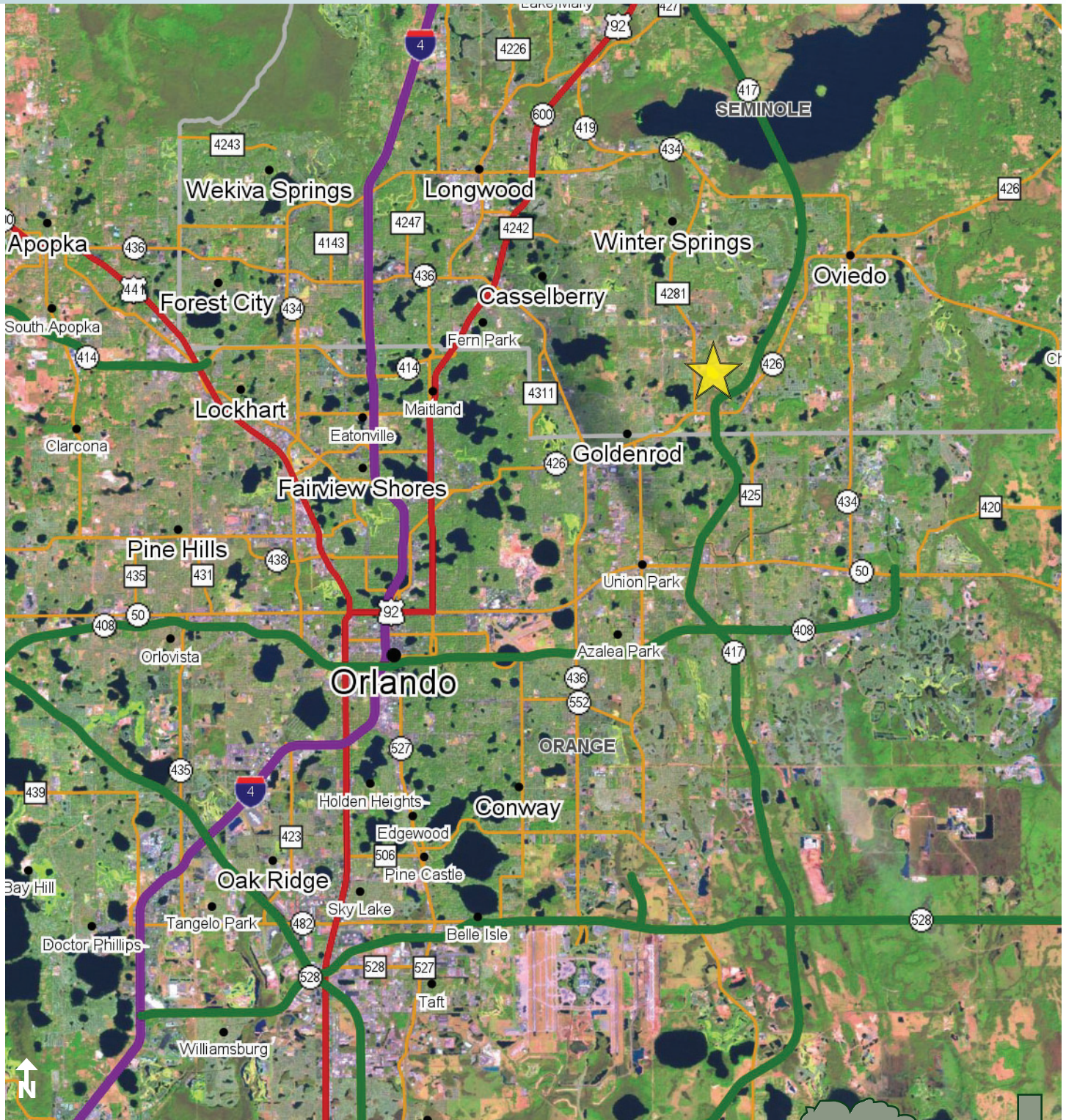
— Commercial Real Estate Investments | Management | Brokerage | Development | Land

Maury L. Carter & Associates, Inc.
407-422-3144 | www.maurycarter.com



SINGLE FAMILY DEVELOPMENT INFILL LAND

9.55± acres | Seminole County, FL



LOCATION MAP

— Commercial Real Estate Investments | Management | Brokerage | Development | Land

Maury L. Carter & Associates, Inc.
407-422-3144 | www.maurycarter.com

