

INCOME PRODUCING PROPERTY

0.15± acres

Mount Dora, Lake County, FL

LAND FOR SALE



LOCATION

803 East 5th Avenue, Mount Dora, FL 32757

Parcel ID: 29-19-27-0200-000-01700

SIZE

0.15± acres; 1,584 square feet commercial building

PRICE

\$175,000

ZONING

C-2, Downtown Commercial

ROAD FRONTAGE

50'± on East 5th Avenue

UTILITIES

Electric, water and sewer

DESCRIPTION

This income producing property is located in the heart of beautiful Downtown Mount Dora. This location is currently home to the Pawtique Pet Salon and Spa which has been a local thriving pet shop and grooming location for the past four years in the downtown Mount Dora community. Own a great income producing commercial property here in the historical downtown of Mount Dora, Florida.

Offering subject to errors, omission, prior sale or withdrawal without notice.



— Commercial Real Estate Investments | Management | Brokerage | Development | Land —

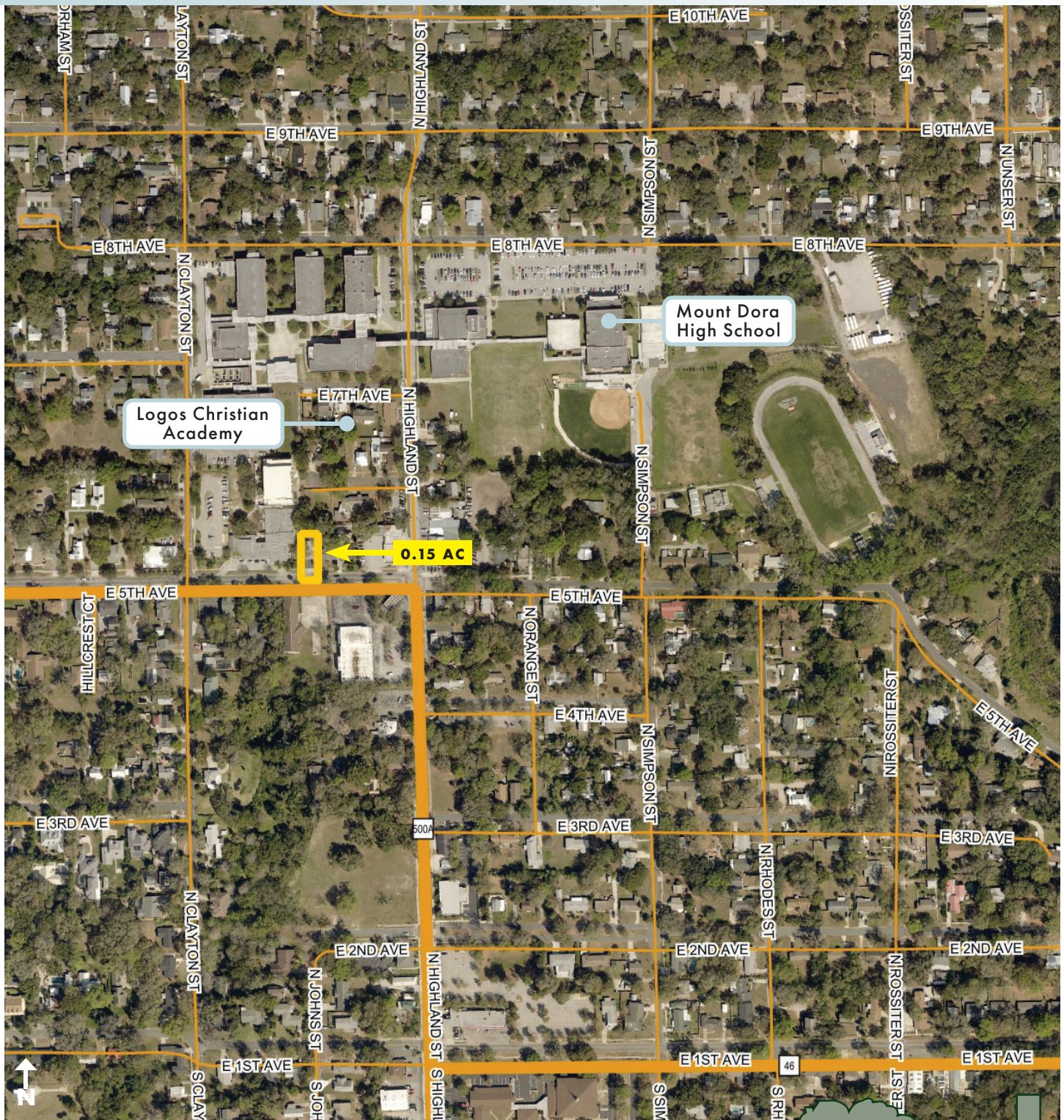
Maury L. Carter & Associates, Inc.
407-422-3144 | www.maurycarter.com



INCOME PRODUCING PROPERTY

0.15± acres

Mount Dora, Lake County, FL



PROPERTY MAP

— Commercial Real Estate Investments | Management | Brokerage | Development | Land

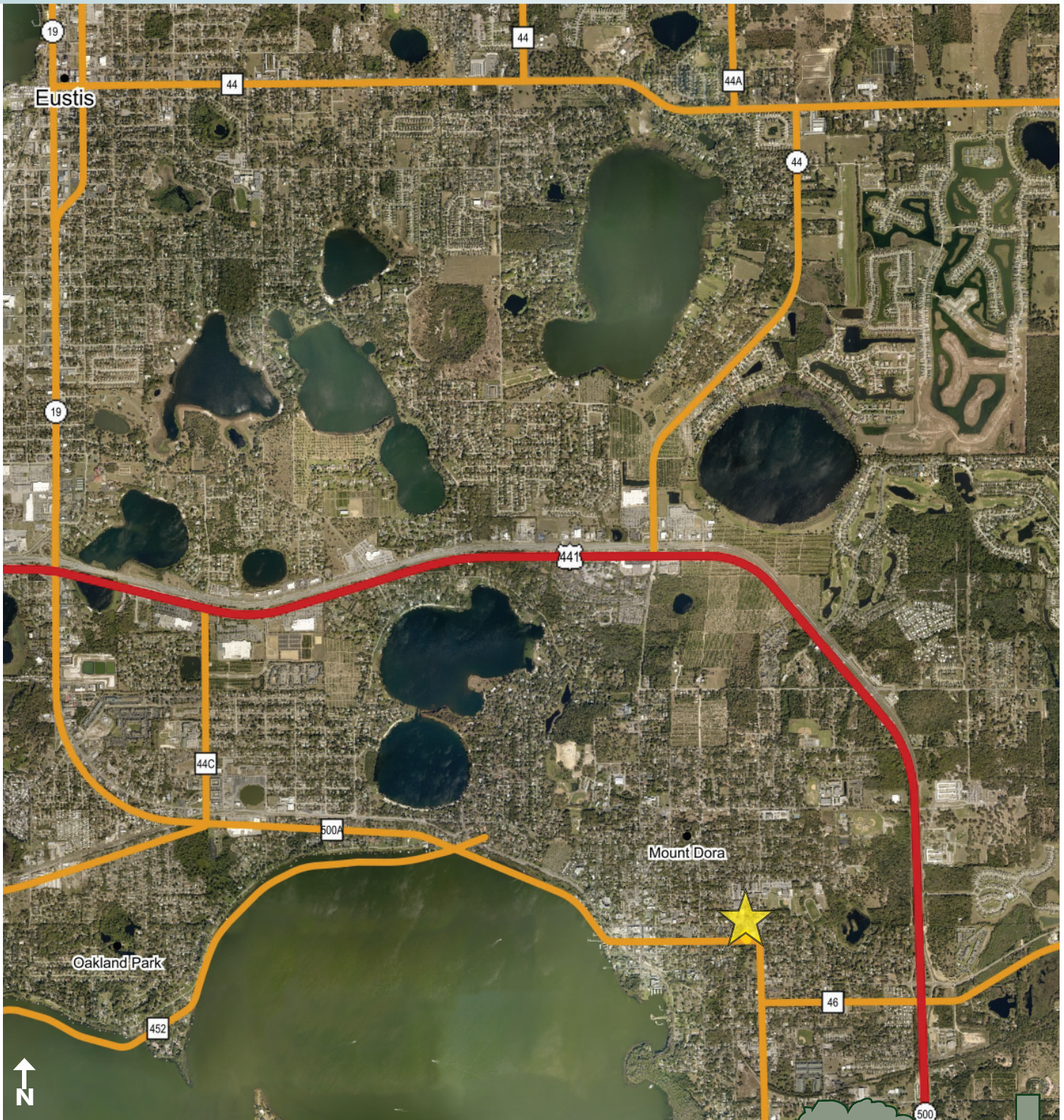
Maury L. Carter & Associates, Inc.
407-422-3144 | www.maurycarter.com



INCOME PRODUCING PROPERTY

0.15± acres

Mount Dora, Lake County, FL



REGIONAL MAP

— Commercial Real Estate Investments | Management | Brokerage | Development | Land

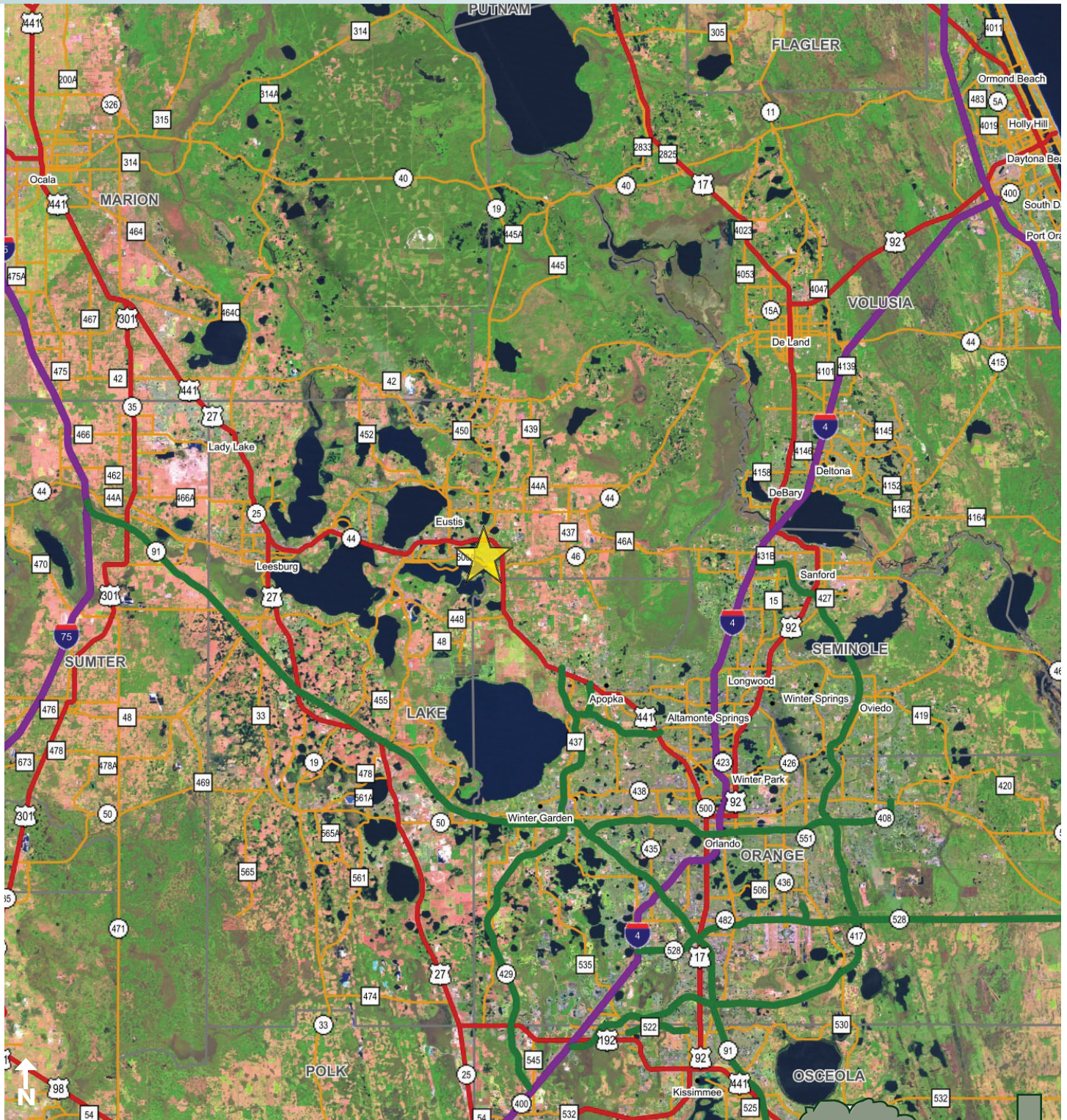
Maury L. Carter & Associates, Inc.
407-422-3144 | www.maurycarter.com



INCOME PRODUCING PROPERTY

0.15± acres

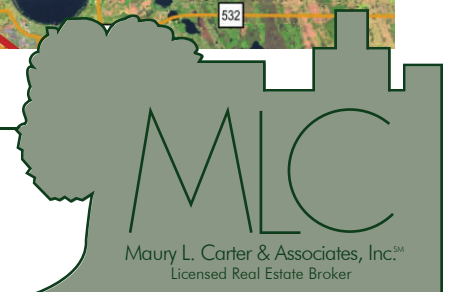
Mount Dora, Lake County, FL



LOCATION MAP

— Commercial Real Estate Investments | Management | Brokerage | Development | Land

Maury L. Carter & Associates, Inc.
407-422-3144 | www.maurycarter.com



INCOME PRODUCING PROPERTY

0.15± acres

Mount Dora, Lake County, FL



PROPERTY PHOTOS

— Commercial Real Estate Investments | Management | Brokerage | Development | Land —

Maury L. Carter & Associates, Inc.
407-422-3144 | www.maurycarter.com

