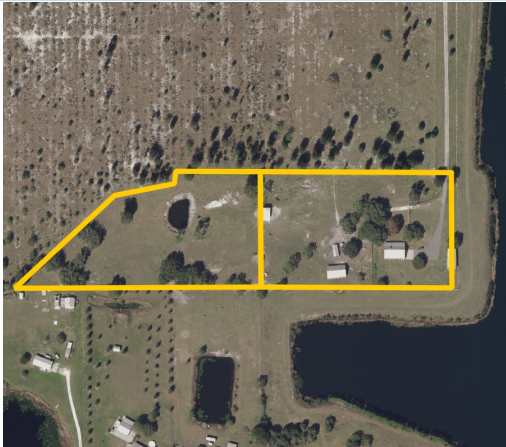


# NARCOOSSEE AREA LAND

10.9± Acres

Osceola County, FL

**SOLD!**



## DESCRIPTION/LOCATION

10.9± acres located in the hottest area of Osceola County. Property has a nice 3/2 home with a shop and is all fenced. This property is unique due to the location of several proposed developments around it yet it offers quiet living. Great place to enjoy your animals with pristine surroundings. Opportunity to develop. This is a versatile property that has it all in the middle of Central Florida.

Beautiful 3 bedroom 2 bath home with attached garage. The front porch offers quiet views of the cattle grazing in the neighboring pastures while shaded by the oaks. The home is 1,744 s/f of conditioned space and 3,200 s/f overall. The property offers a stunning view of the neighboring lake that is on the east and south side of the property. This property has it all - from raising livestock to an abundance of country life. This is the pristine home and surroundings you have been looking for.

Located on South Eagle Road in Narcoossee. Just 15 minutes to Medical City/Lake Nona and the Orlando International Airport. Close to all area theme parks and 1 hour to the beach. Proposed beltway will be less than 5 minutes away.

## SIZE

10.9± Acres

## PRICE

\$1,250,000

## UTILITIES

Offsite / Jones Road

## ZONING

Low density residential - up to 8 units per acre

Offering subject to errors, omission, prior sale or withdrawal without notice.

— Commercial Real Estate Investments | Management | Brokerage | Development | Land —

**Maury L. Carter & Associates, Inc.**

407-422-3144 | [www.maurycarter.com](http://www.maurycarter.com)

FUTURE DEVELOPMENT LAND



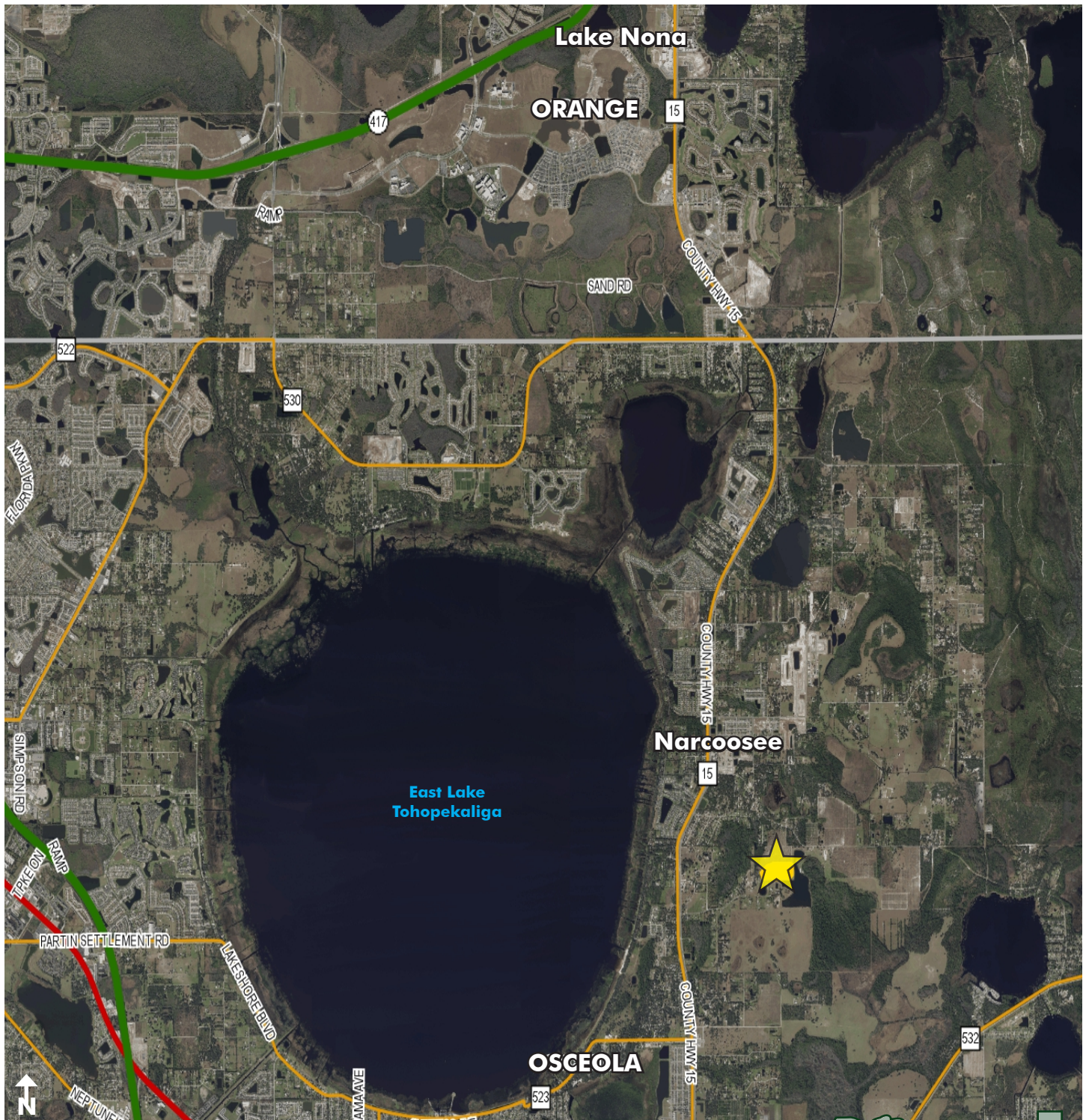


# NARCOOSSEE AREA LAND

10.9± Acres

Osceola County, FL

**SOLD!**



LOCATION MAP

— Commercial Real Estate Investments | Management | Brokerage | Development | Land

Maury L. Carter & Associates, Inc.

407-422-3144 | [www.maurycarter.com](http://www.maurycarter.com)



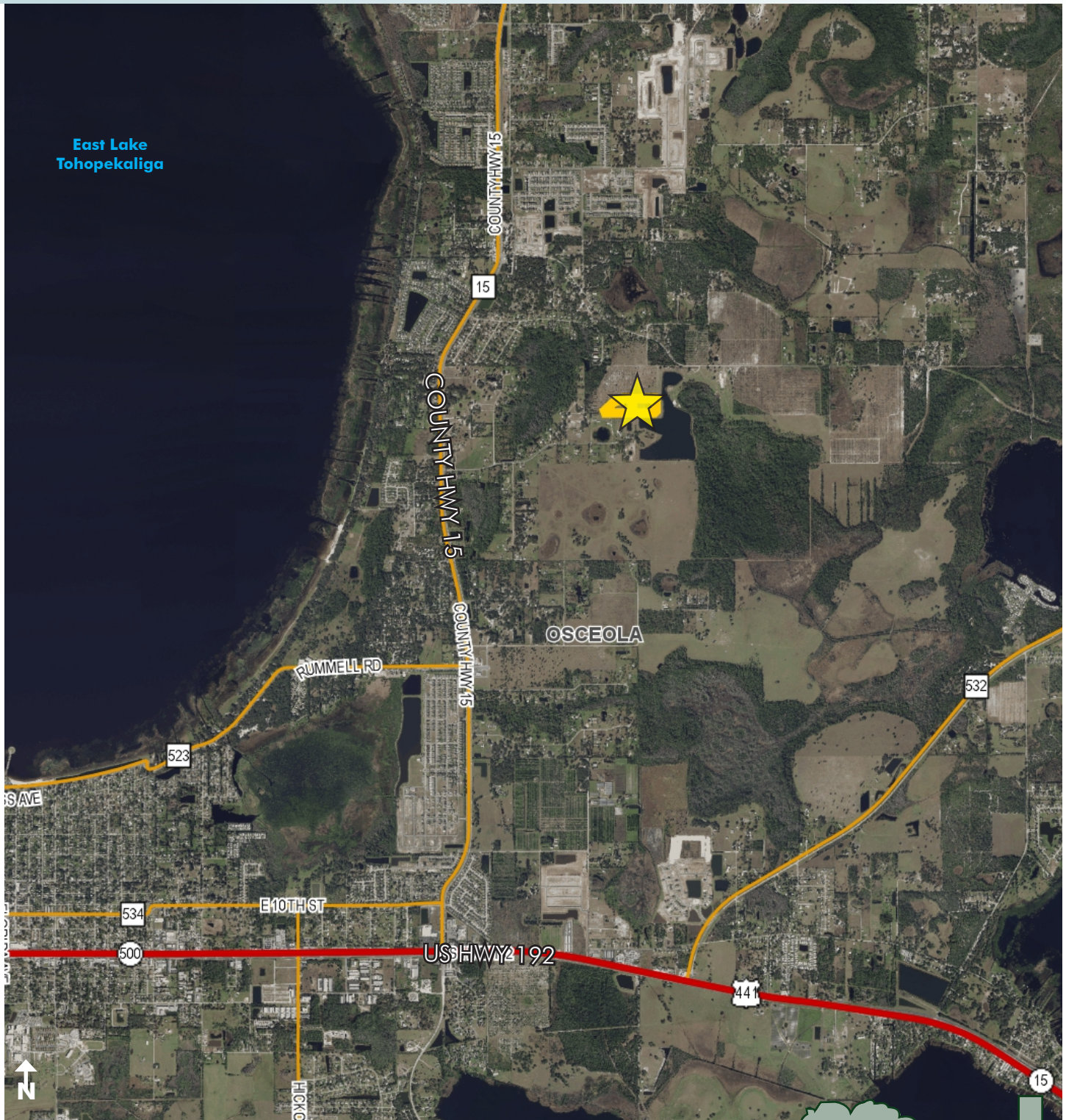


# NARCOOSSEE AREA LAND

10.9± Acres

Osceola County, FL

**SOLD!**



REGIONAL MAP

— Commercial Real Estate Investments | Management | Brokerage | Development | Land —

Maury L. Carter & Associates, Inc.  
407-422-3144 | [www.maurycarter.com](http://www.maurycarter.com)



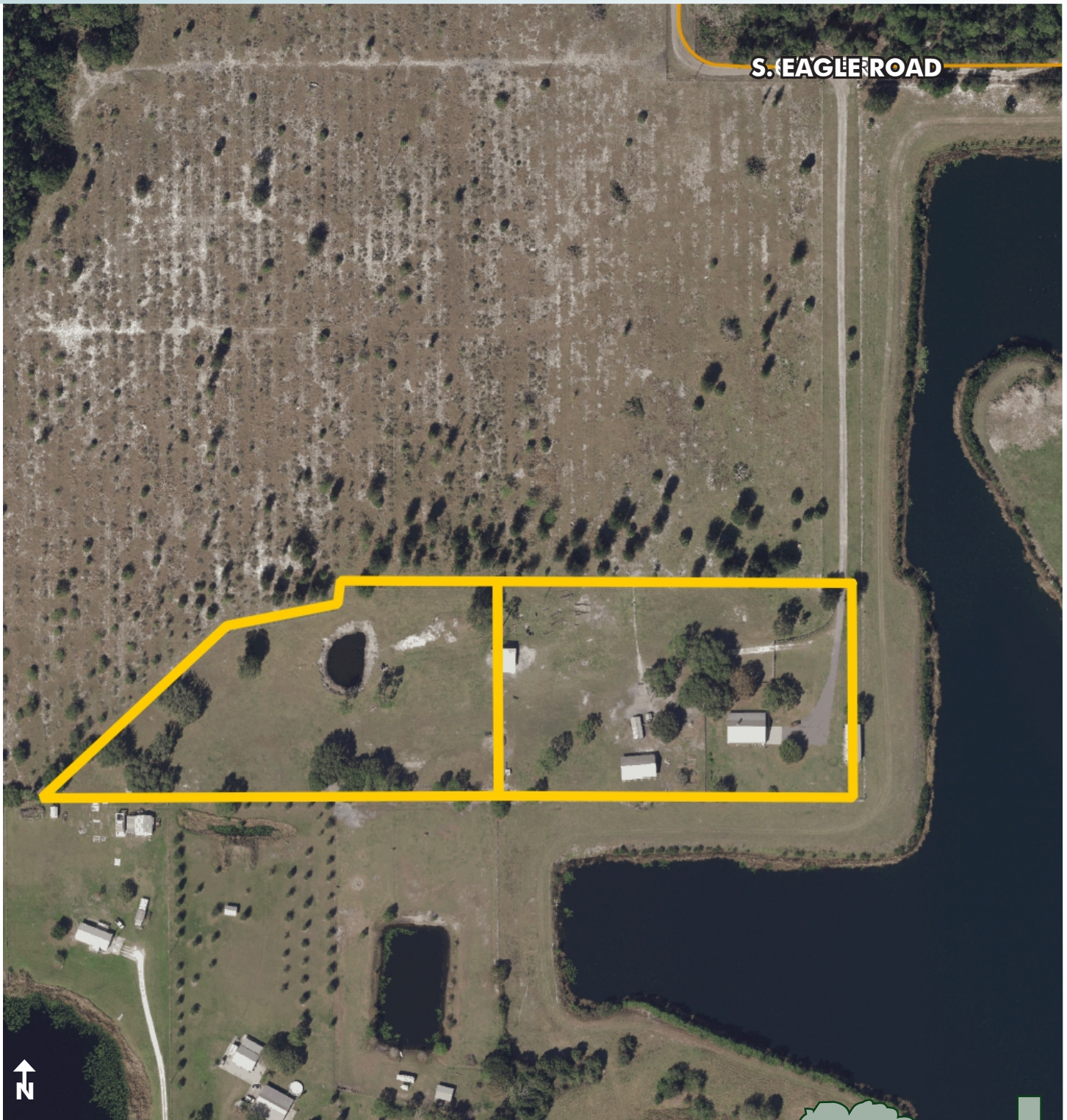


# NARCOOSSEE AREA LAND

10.9± Acres

Osceola County, FL

**SOLD!**



PROPERTY MAP

— Commercial Real Estate Investments | Management | Brokerage | Development | Land —

Maury L. Carter & Associates, Inc.

407-422-3144 | [www.maurycarter.com](http://www.maurycarter.com)

