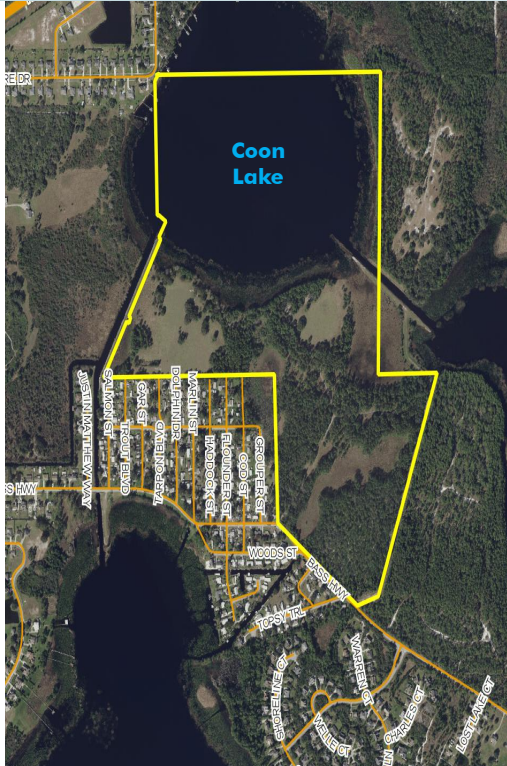


COON LAKE LAND

234± gross acres/130± net acres
Osceola County

**UNDER
CONTRACT**



LOCATION/DESCRIPTION

Beautiful property located on the southern end of Coon Lake in Osceola County. Coon Lake is on the Alligator chain of lakes with access to 6 lakes. This property offers tremendous opportunities for hunting, fishing, camping, and outdoor enjoyment. Property is currently leased for cattle and hunting. Has great potential for residential development.

SIZE

234± acres

PRICE

\$4,000,000

ZONING

AC - Ag Conservation

FUTURE LAND USE

Low Density Residential (LDR) 3-8 units/acre

ROAD FRONTAGE

1200± feet on Bass Highway

LAKE FRONTAGE

2800± feet of direct frontage on Coon Lake

Offering subject to errors, omission, prior sale or withdrawal without notice.

DEVELOPMENT POTENTIAL

— Commercial Real Estate Investments | Management | Brokerage | Development | Land —

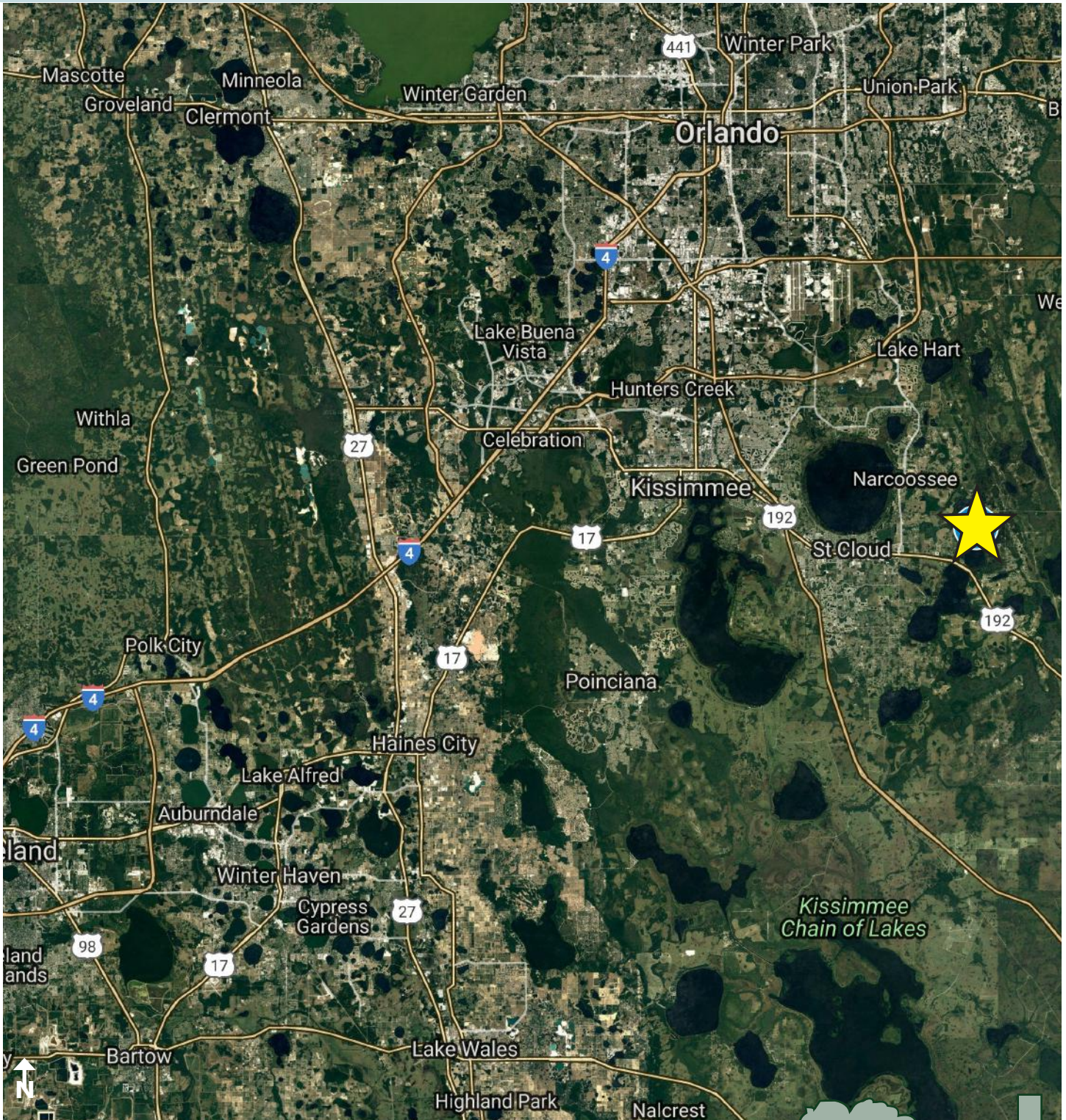
Maury L. Carter & Associates, Inc.
407-422-3144 | www.maurycarter.com



COON LAKE LAND

234± gross acres/130± net acres
Osceola County

**UNDER
CONTRACT**



LOCATION MAP

— Commercial Real Estate Investments | Management | Brokerage | Development | Land

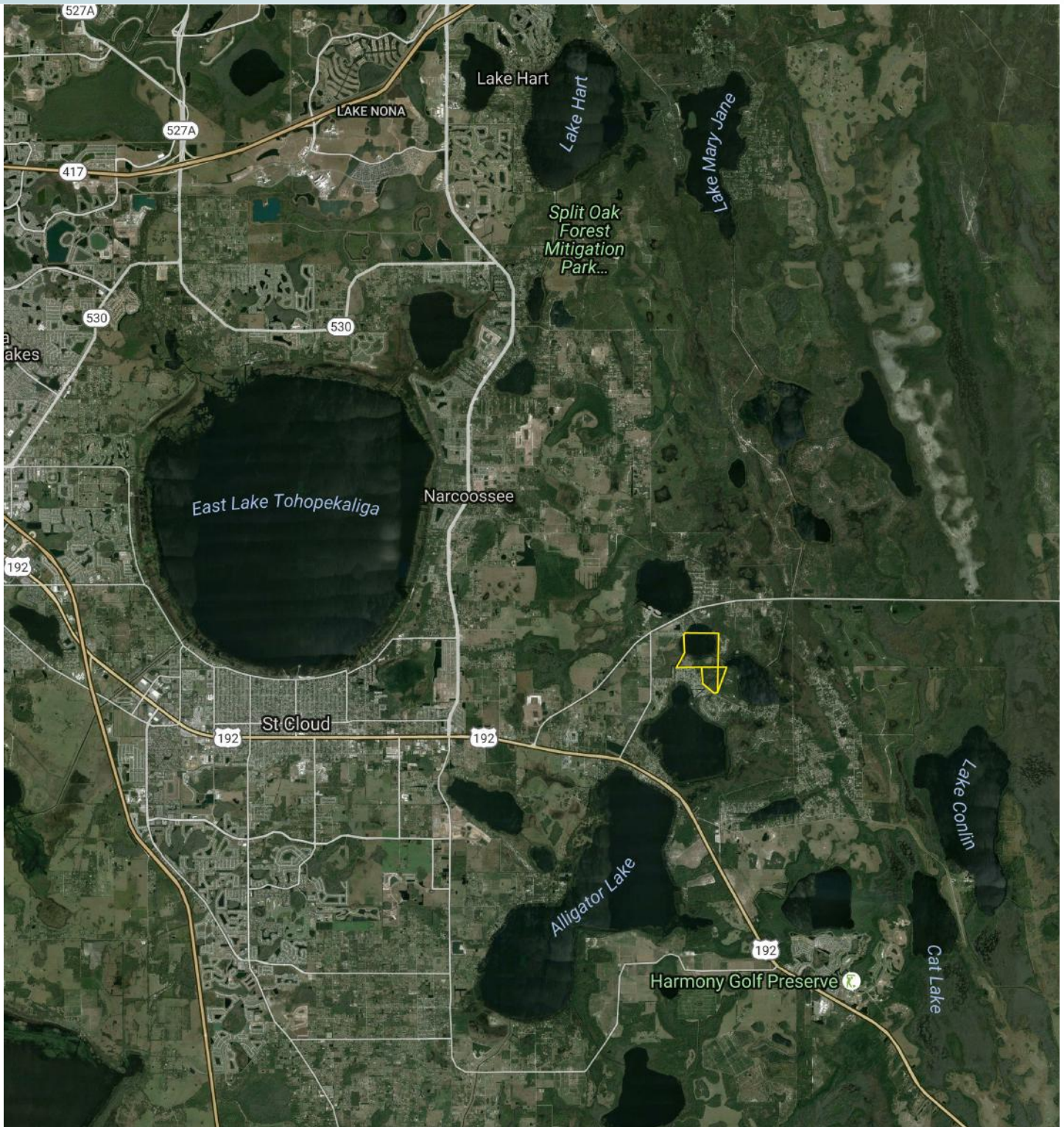
Maury L. Carter & Associates, Inc.
407-422-3144 | www.maurycarter.com



COON LAKE LAND

234± gross acres/130± net acres
Osceola County

**UNDER
CONTRACT**



REGIONAL MAP

— Commercial Real Estate Investments | Management | Brokerage | Development | Land

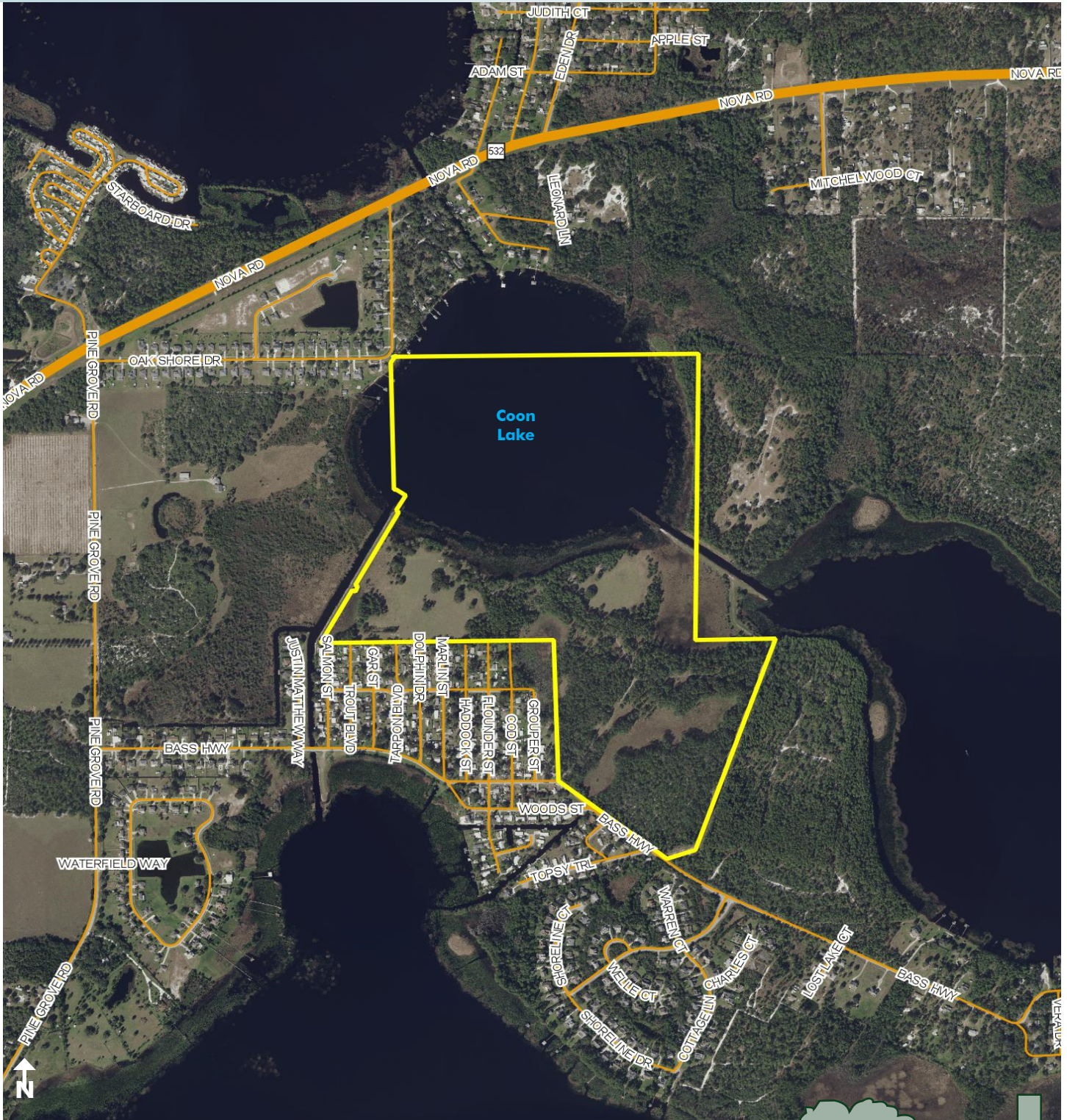
Maury L. Carter & Associates, Inc.
407-422-3144 | www.maurycarter.com



COON LAKE LAND

234± gross acres/130± net acres
Osceola County

**UNDER
CONTRACT**



PROPERTY MAP

— Commercial Real Estate Investments | Management | Brokerage | Development | Land

Maury L. Carter & Associates, Inc.
407-422-3144 | www.maurycarter.com

