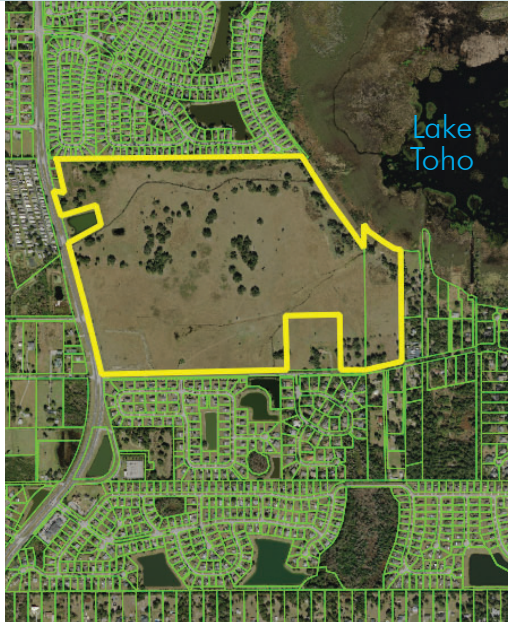


# PRIME LAKEFRONT PROPERTY

200± acres

Kissimmee, Osceola County, FL



## LOCATION

200± acres located on the shores of Lake Tohopekaliga in Kissimmee, Osceola County, Florida. On Pleasant Hill Road, just one mile south of John Young Parkway.

## SIZE

200± acres

## ZONING

Low Density Residential

## ROAD FRONTAGE

2,300'± on Pleasant Hill Road

3,020'± on Harbor Road

## LAKE FRONTAGE

1,805'± on Lake Tohopekaliga

## UTILITIES

Kissimmee Utility Authority, Toho Water Authority

## DESCRIPTION

Prime lakefront property for residential development.

Offering subject to errors, omission, prior sale or withdrawal without notice.

## DRIVE TIMES

- 45 minutes to Walt Disney World
- 35 minutes to Sea World and Orlando International Airport
- 1 hour 15 minutes to east coast beaches

LAND FOR SALE

— Commercial Real Estate Investments | Management | Brokerage | Development | Land —

Maury L. Carter & Associates, Inc.

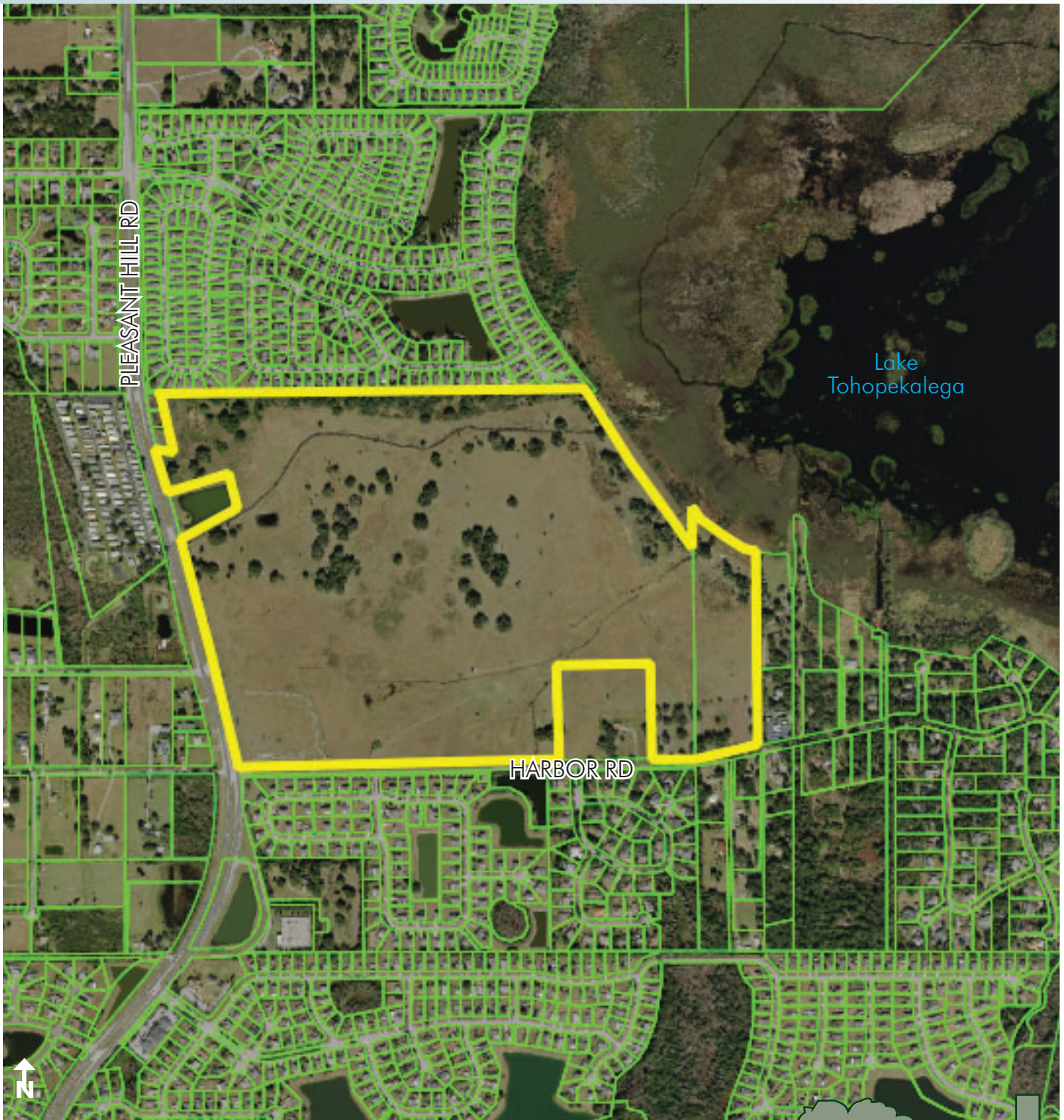
407-422-3144 | [www.maurycarter.com](http://www.maurycarter.com)



# PRIME LAKEFRONT PROPERTY

200± acres

Kissimmee, Osceola County, FL



PROPERTY MAP

— Commercial Real Estate Investments | Management | Brokerage | Development | Land

Maury L. Carter & Associates, Inc.  
407-422-3144 | [www.maurycarter.com](http://www.maurycarter.com)





# PRIME LAKEFRONT PROPERTY

200± acres

Kissimmee, Osceola County, FL



LOCATION MAP

— Commercial Real Estate Investments | Management | Brokerage | Development | Land —

Maury L. Carter & Associates, Inc.  
407-422-3144 | [www.maurycarter.com](http://www.maurycarter.com)



# PRIME LAKEFRONT PROPERTY

200± acres

Kissimmee, Osceola County, FL

## Valencia College to break ground on new Poinciana campus

Valencia College at Poinciana Campus opens in the fall of 2017. The 65,000-square-foot building was designed by architect DLR Group to complement its natural surroundings. **Laura Kinsler, Reporter, GrowthSpotter**

Valencia College and Osceola County celebrate the groundbreaking for the new Poinciana Campus at 9 a.m. today.

The \$27 million college, slated to open in the fall of 2017, was designed to showcase and enhance the landscape around it. The college will serve 2,500 degree-seeking students, as well as an additional 1,000 students seeking job training.

In an interview last fall with GrowthSpotter, Campus President Kathleen Plinske said the 65,000-square-foot building would be completely solar powered and designed to capture and reuse rainwater. The goal is to exceed LEED gold standards and strive for a “net zero” energy effect.

Plinske said the Polytechnic Campus at Arizona State University in Mesa served as an inspiration for the “modern agrarian” style, particularly the use of perforated metal shade structures on the building’s exterior.



The DLR Group utilized a “modern agrarian” style for the new Poinciana Campus building, shown here in the southwest view. The metal grids on the side of the building are designed to provide shade, improve energy efficiency and protect migratory birds.

The shade structures, which were modified into a grid pattern on the Poinciana building, filter the sunlight, improve energy efficiency and protect migratory birds.

DLR Group is the project architect. Clancy & Theys is the construction manager.



## Valencia College striving for “net zero” energy impact at new Poinciana campus

Other architectural features include:

- An indoor/outdoor cafe area
- Native landscaping including Poinciana trees
- A two-story campus library with multiple settings for studying, group collaboration and tutoring. The library will be elevated into a “treehouse” concept to overlook the Poinciana trees in the courtyard to the west and the natural conservation to the east.

Osceola County donated the 19-acre site to the college as part of its nearly 400-acre College Station mixed-use planned development on the west shore of Lake Tohopekalika. The county is in negotiations with Indiana-based Mainstreet Development to build a mix of multifamily/student housing, commercial space with ample parks, ballfields, a swimming pool and wellness center.



## Developer pitches wellness-themed campus for Osceola’s College Station contract

The three-story building will be the first campus in the Valencia system to have a classroom outfitted with video conferencing equipment that will allow students to enroll and participate in classes at other campuses.

The Poinciana campus will offer courses in culinary arts and hospitality management. It will have a full teaching kitchen.

Another feature unique to the campus is a 5,000-square-foot flexible “trades lab” that will host non-credit courses in various construction fields, such as drywall, flooring and masonry, or train students to be forklift operators.

<http://www.growthspotter.com/projects/college-station/gs-valencia-college-to-break-ground-on-new-poinciana-campus-20160518-story.html>

— Commercial Real Estate Investments | Management | Brokerage | Development | Land

**Maury L. Carter & Associates, Inc.**  
407-422-3144 | [www.maurycarter.com](http://www.maurycarter.com)

