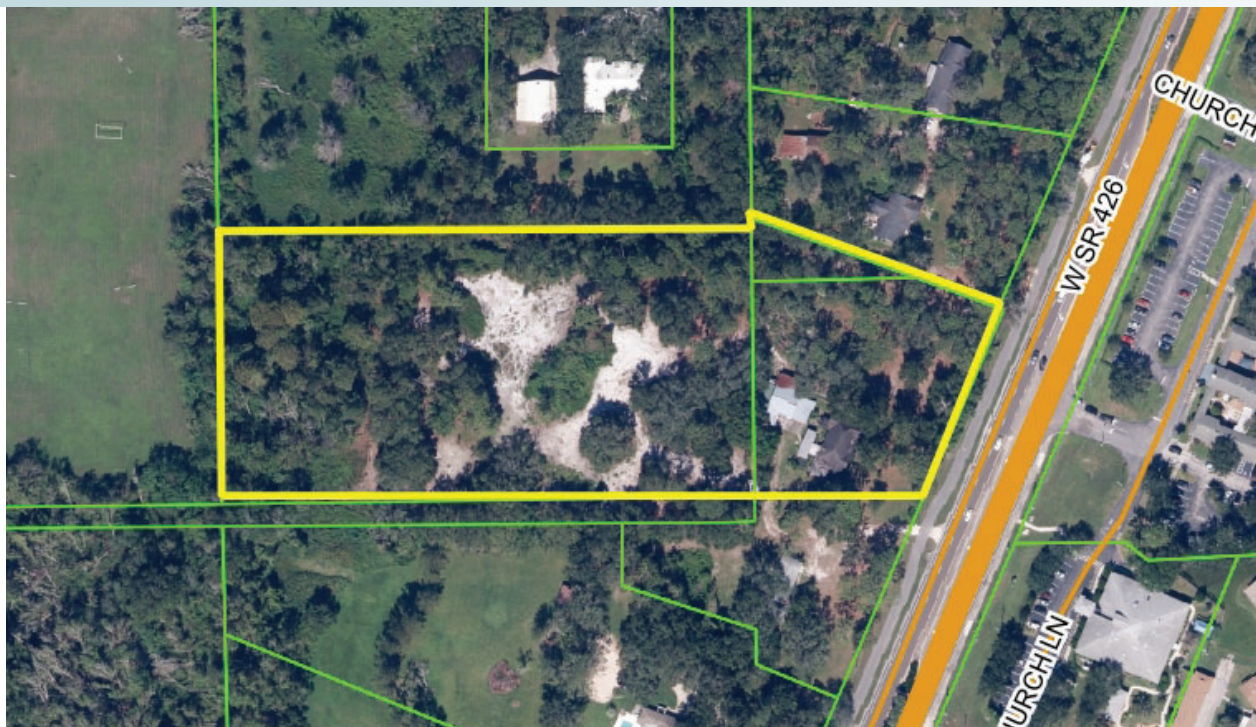


# OVIEDO TOWNHOME LAND

6.92± acres

Seminole County, FL



LAND FOR SALE

## LOCATION

Property located along the west side of SR 426, just north of Chapman Road in unincorporated Seminole County (includes an Oviedo address).

## SIZE

6.92± acres

## PRICE

\$2,000,000

## ZONING/FLU

Zoning: A-1 (Agricultural);  
FLU: Medium Density (10 units/acre),  
Commercial

## ROAD FRONTAGE

250'± on W side of SR 426

## UTILITIES

Available

## DESCRIPTION

This property is located immediately south of the city limits of Oviedo, less than 1 mile south of SR 417/Red Bug Road interchange along SR 426 in unincorporated Seminole County near neighborhood retail shopping districts. Zoned schools include Evans Elementary (Grade A), Tuskawilla Middle School (Grade B) and Lake Howell High School (Grade B).

Offering subject to errors, omission, prior sale or withdrawal without notice.

— Commercial Real Estate Investments | Management | Brokerage | Development | Land

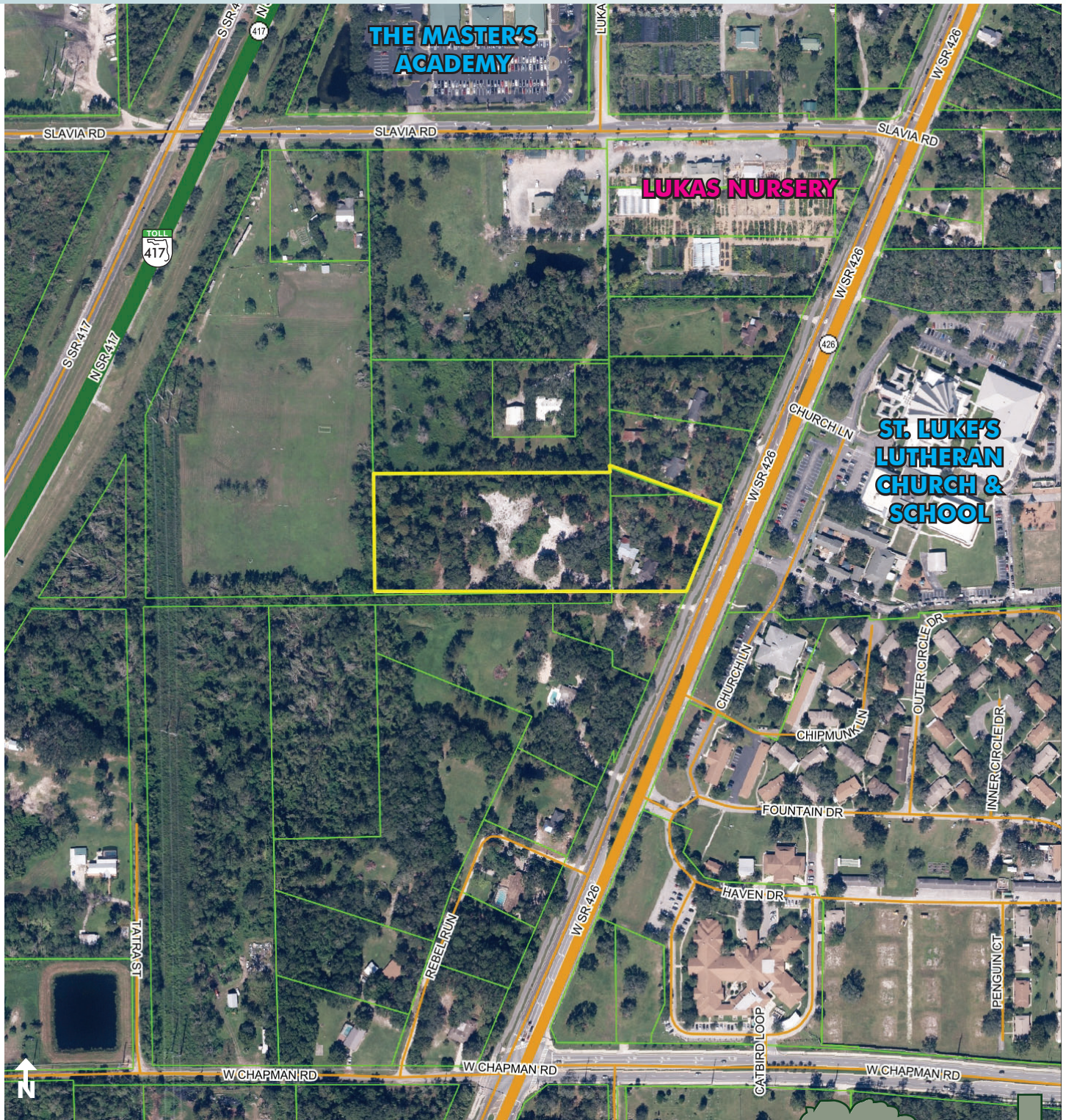
Maury L. Carter & Associates, Inc.  
407-422-3144 | [www.maurycarter.com](http://www.maurycarter.com)



# OVIEDO TOWNHOME LAND

6.92± acres

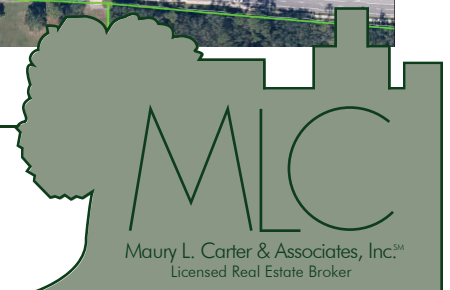
Seminole County, FL



PROPERTY MAP

— Commercial Real Estate Investments | Management | Brokerage | Development | Land

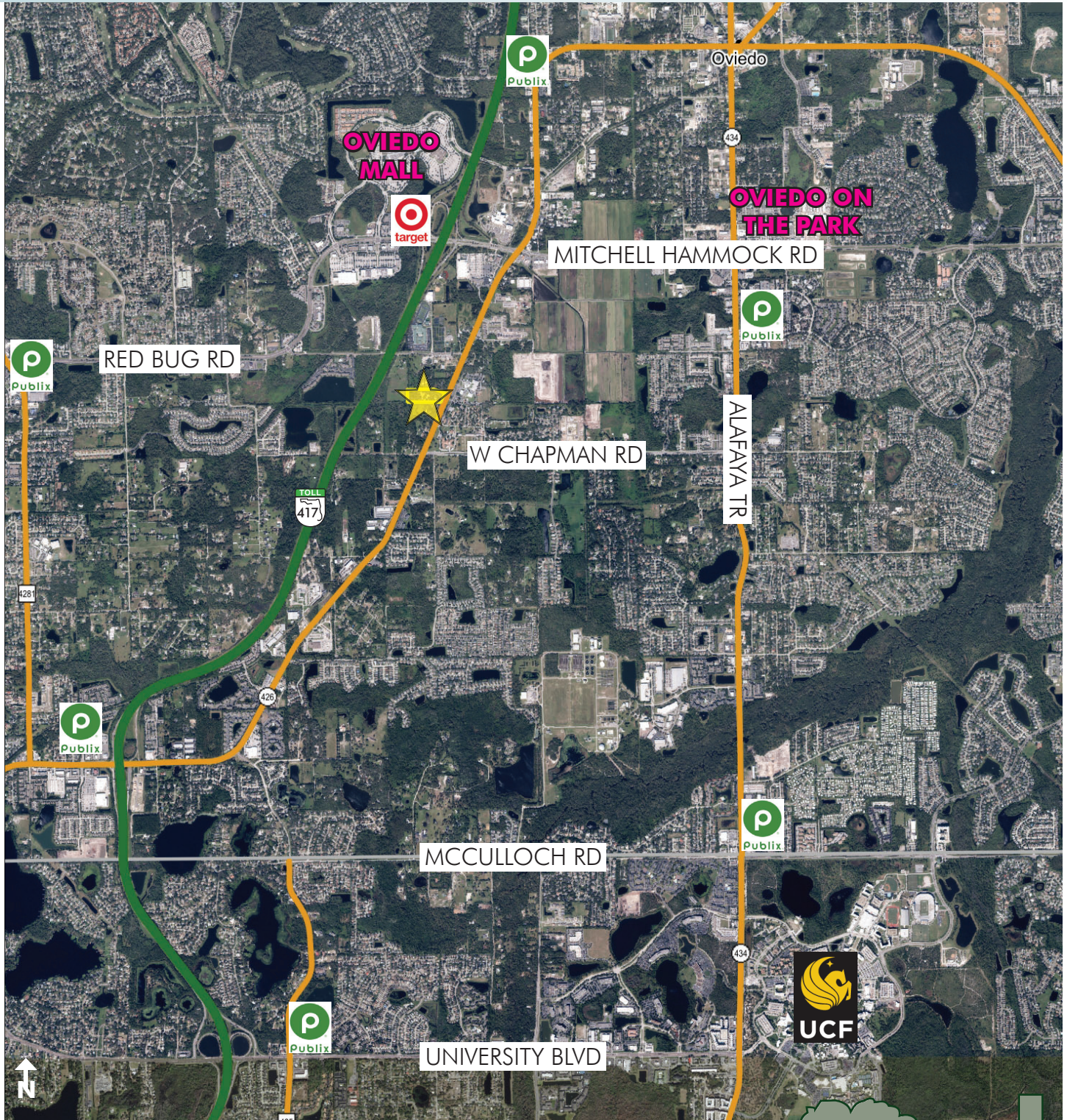
Maury L. Carter & Associates, Inc.  
407-422-3144 | [www.maurycarter.com](http://www.maurycarter.com)



# OVIEDO TOWNHOME LAND

6.92± acres

Seminole County, FL



REGIONAL MAP

— Commercial Real Estate Investments | Management | Brokerage | Development | Land

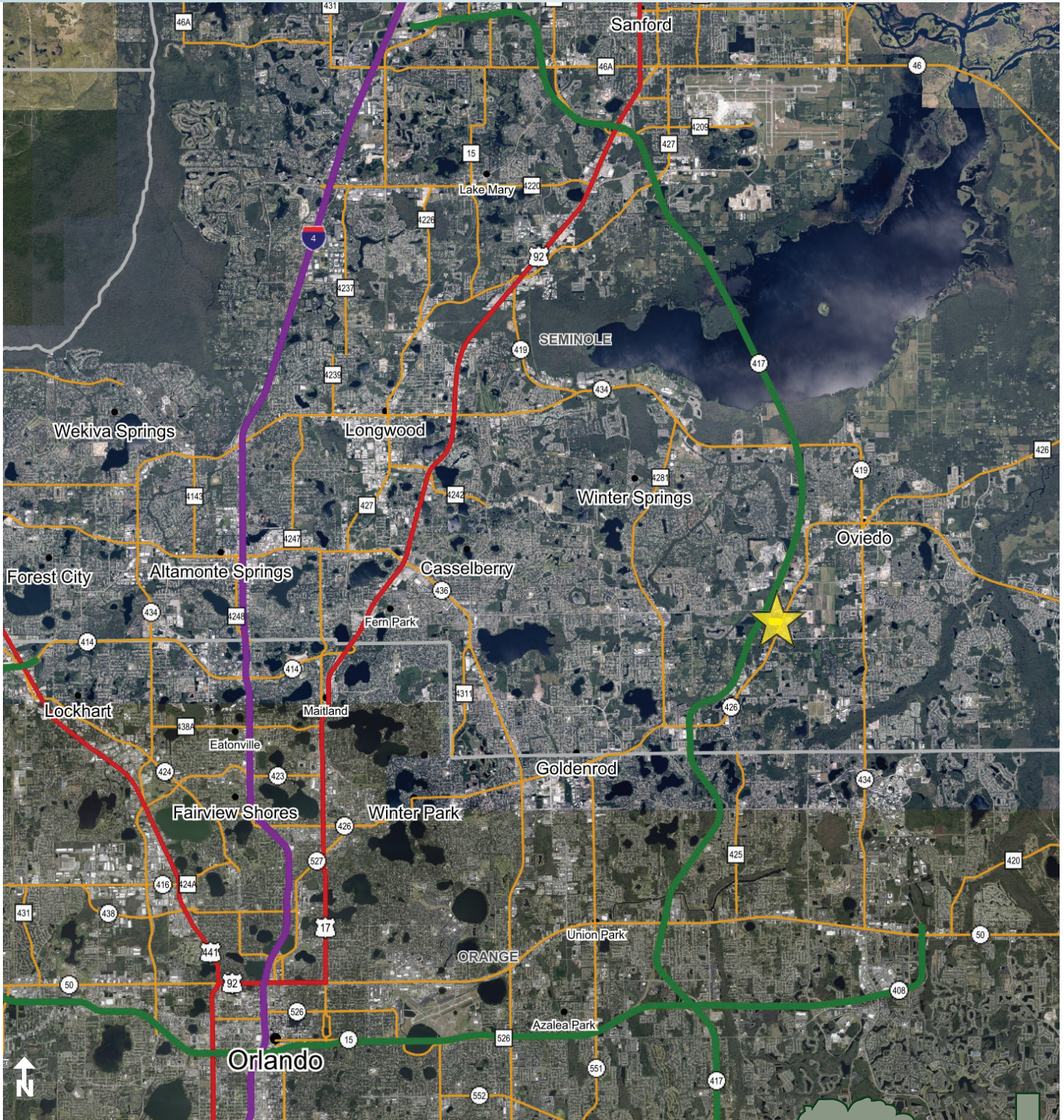
Maury L. Carter & Associates, Inc.  
407-422-3144 | [www.maurycarter.com](http://www.maurycarter.com)



# OVIEDO TOWNHOME LAND

6.92± acres

Seminole County, FL



LOCATION MAP

— Commercial Real Estate Investments | Management | Brokerage | Development | Land

Maury L. Carter & Associates, Inc.  
407-422-3144 | [www.maurycarter.com](http://www.maurycarter.com)

