

**FOR
SALE**

WEBSTER COMMERCIAL ACREAGE

E CR-478, Webster, Florida 33597



ABOUT THE PROPERTY

SIZE 5.26± acres

PRICE \$250,000

ZONING CH - Heavy Commercial

ROAD FRONTAGE 275'± on E CR-478

DESCRIPTION

This is your opportunity to own a rural lot in Webster, Florida! This is a perfect rural lot to build your dream home on, with long-term commercial potential.

Call today to see this beautiful property!

DRIVE TIMES

Center Hill: 10 minutes

I-75 On Ramp: 15 minutes

Clermont: 30 minutes

The Villages: 45 minutes

Downtown Orlando: 1 hour

Ocala: 1 hour

Tampa: 1.25 hours

Orlando Int'l Airport: 1.25 hours

MAURY L. CARTER & ASSOCIATES, INC.

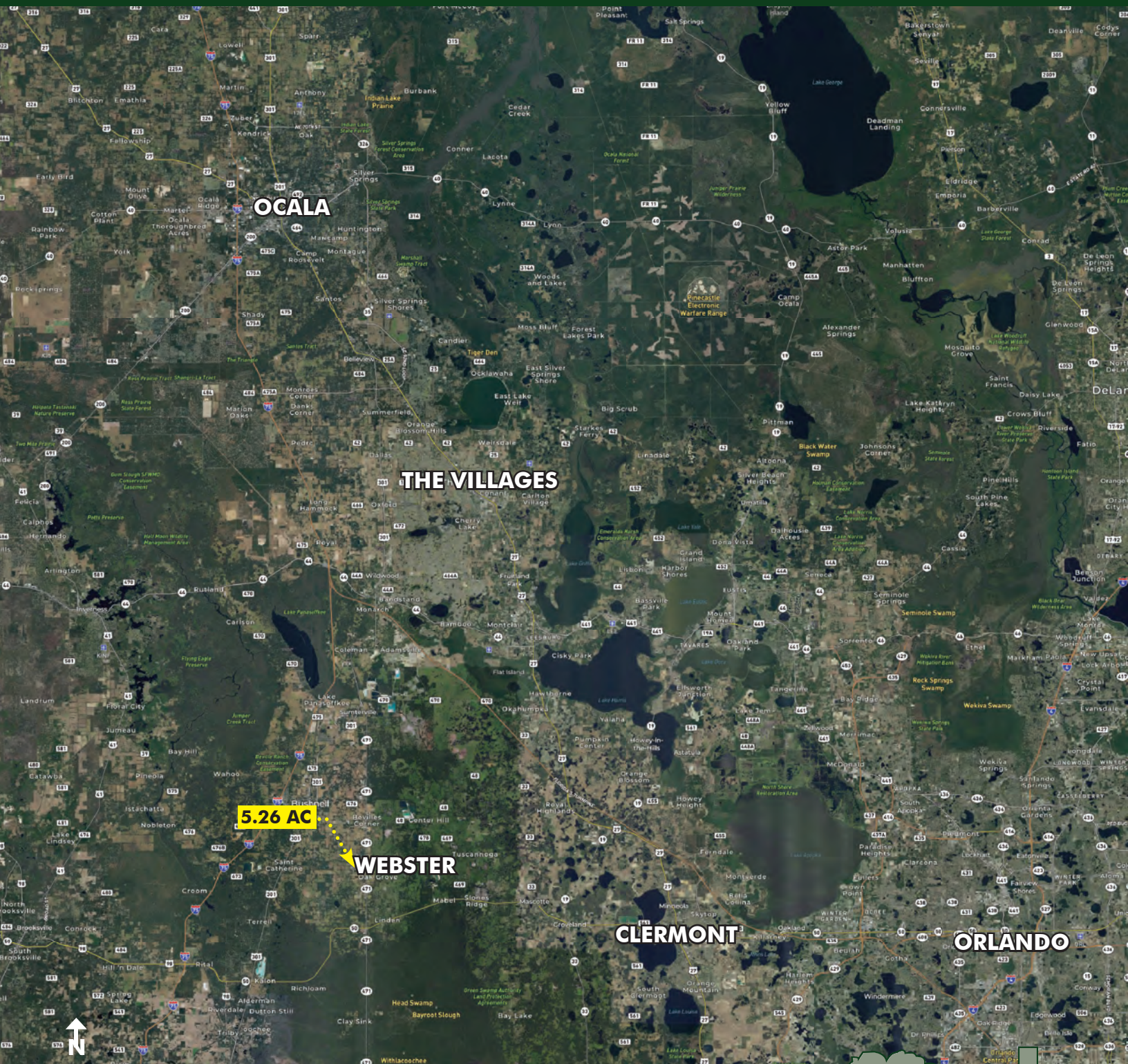
Licensed Real Estate Brokers | www.maurycarter.com | 407-422-3144



**FOR
SALE**

WEBSTER COMMERCIAL ACREAGE

E CR-478, Webster, Florida 33597



LOCATION MAP

MAURY L. CARTER & ASSOCIATES, INC.

Licensed Real Estate Brokers | www.maurycarter.com | 407-422-3144

