

**FOR
SALE**

ST. CLOUD RECREATIONAL ACREAGE

Osceola County, Florida 34773

**PRICE
REDUCED**



ABOUT THE PROPERTY

SIZE 287± acres

PRICE **Reduced!** NOW \$1,722,000
(WAS \$2,009,000)

ZONING AC

PID 24-27-31-0000-0015-0000
19-27-32-0000-2112-0000

UTILITIES 12" well

DESCRIPTION

Beautiful ranch land in Osceola County. This property offers superb hunting and recreational opportunities and is currently used as a cattle ranch. Located near Suburban Estates, this property may offer the ability to sub-divide for enhanced returns. Great area to bring an RV and camp, ride UTVs and enjoy nature. One of the very few large tracts available in the high demand area of Central Florida!

Close to beaches, major airports, and theme parks, this property is an opportunity to have seclusion while being close to what makes Central Florida a top tourist destination. **Give us a call to schedule a visit to this pristine ranch!**

DRIVE TIMES

St. Cloud: 20 min	Universal Studios: 45 min
Kissimmee: 35 min	Downtown Orlando: 1 hour
Walt Disney World: 45 min	Cocoa Beach: 1 hour
Orlando Int'l Airport: 45 min	Daytona Beach: 1.75 hours

MAURY L. CARTER & ASSOCIATES, INC.

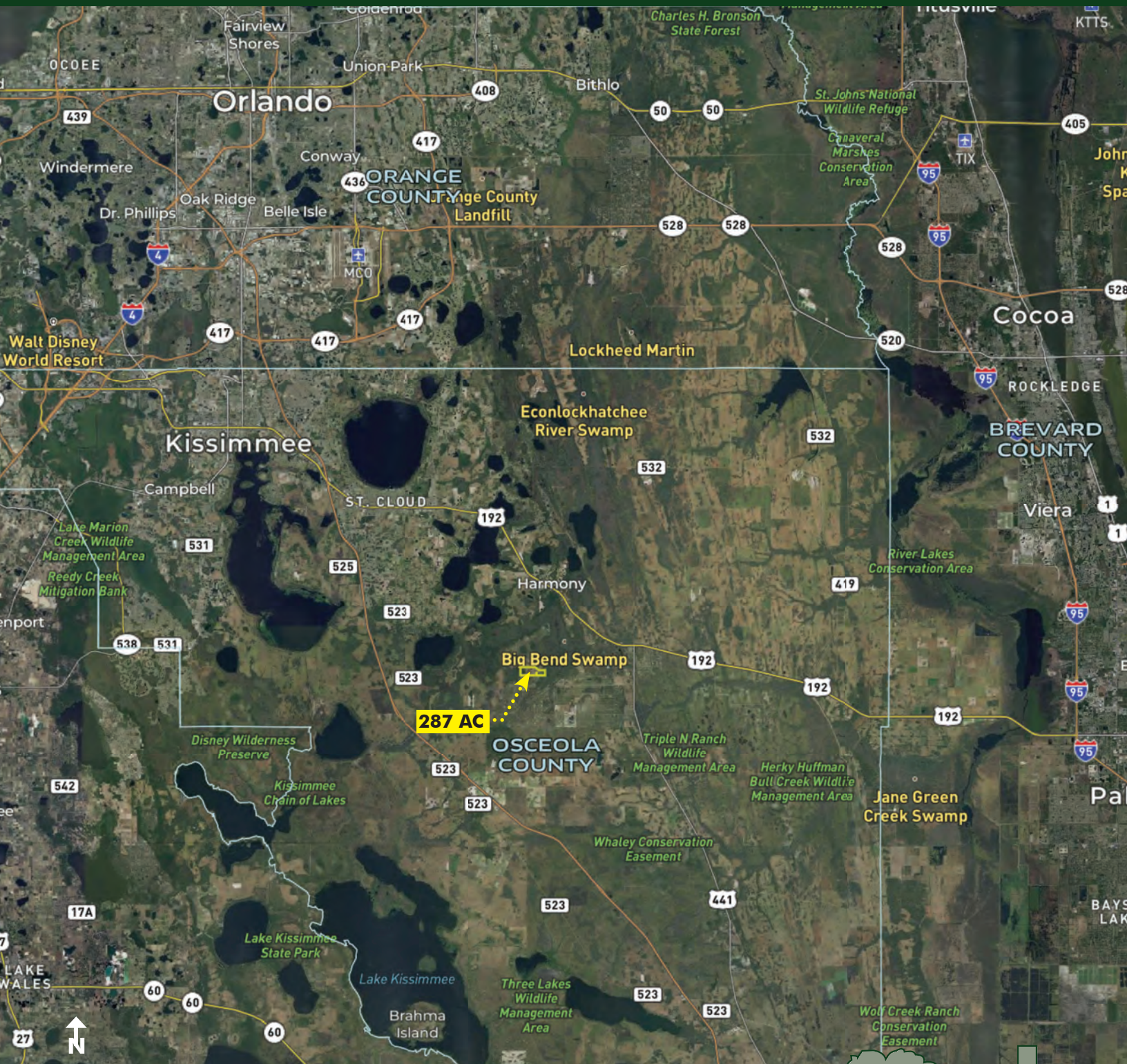
Licensed Real Estate Brokers | www.maurycarter.com | 407-422-3144



**FOR
SALE**

ST. CLOUD RECREATIONAL ACREAGE

Osceola County, Florida 34773



LOCATION MAP

MAURY L. CARTER & ASSOCIATES, INC.

Licensed Real Estate Brokers | www.maurycarter.com | 407-422-3144

